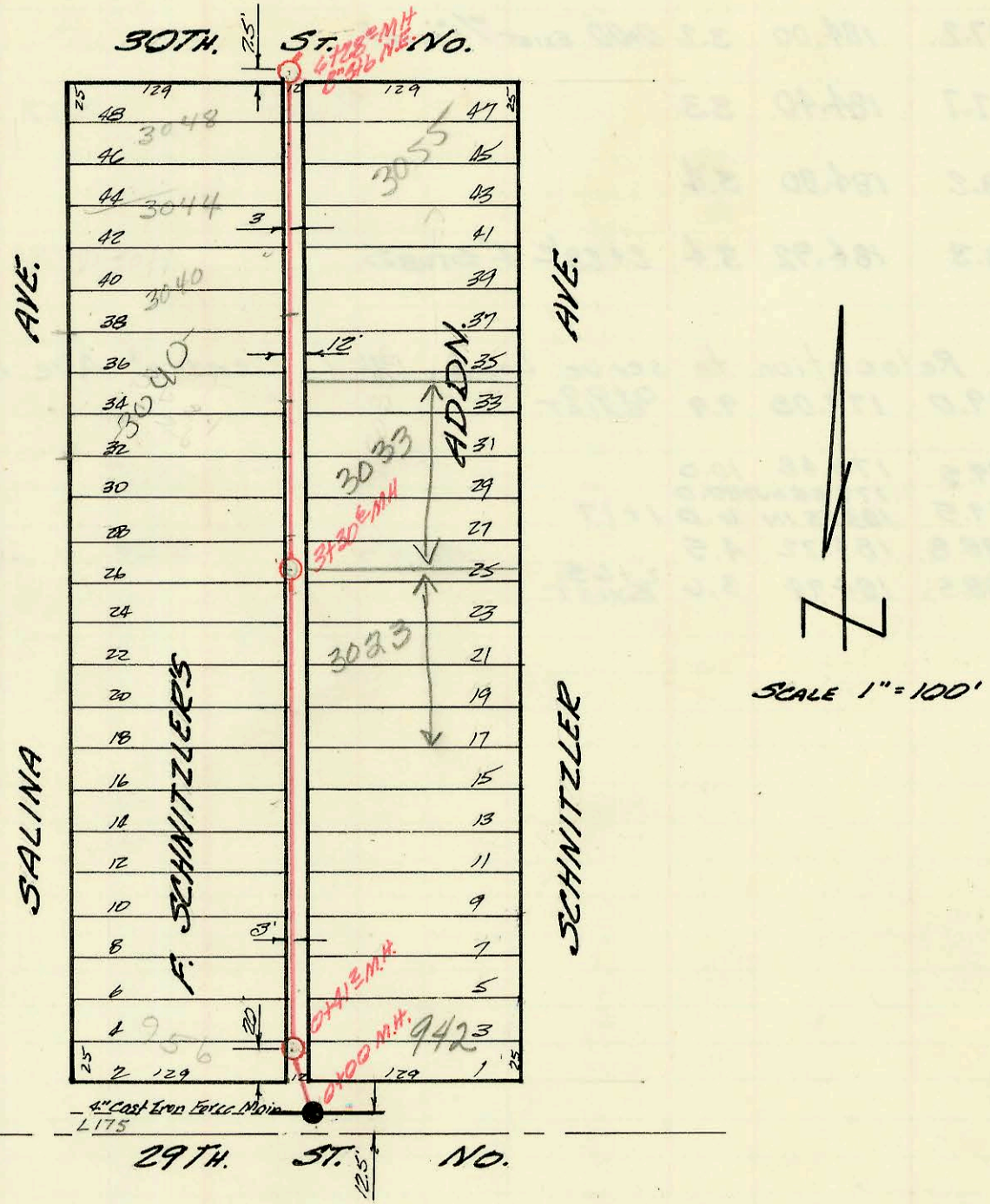


LAT. 9 SUB. 9 W.I.S.  
 UTILITY CONTR INC.  
 LET 5-14-68 BOOKED 5-27-68  
 PROJ. C 28-13 I.H. 3



LAT. 66 SUB 4, 53#23  
 MID STATES CONSTR. CO.  
 LET 5-14-68 BOOKED 6-5-68  
 PROJ C 28-34 16-81

CONSTRUCTION RECORD						SERVICE RECORD						
STATION	ELEVATION		Depth	MANHOLE	4-INCH "Y" BRANCHES		No. of Permit		House Number		DATE OF PERMITS	
	Ground	Grade			North West	South East	North West	South East	North West	South East	North West	South East
	157.9	142.70	15.2	0+00 Exist. M.H.								
	155.7	142.74	13.0	0+22.4								
1+00	151.0	142.89	8.1									
	156.4	142.98 out 144.00 in	11.2	1+42.3								
2+00	155.5	145.32	10.2									
3+00	158.1	147.52	10.6									
	159.0	148.47	10.5	3+44.4								
4+00	160.0	149.72	10.3	4+68								
5+00	162.5	151.92	10.6									
	163.8	153.02	10.7	5+51.9	4+36 N							
<p>R- 2002-0373 92422 8010 (8000) E Central - McClung - 4" SCH 40 - Replaced 15' on low end (did not cut street)</p> <p>SUR 2002-02622 7/24/02 8008 E Central - overnight serv (Starbucks - on site formerly known as 8002-8010)</p>												
<p>LAT 66 SUB 4 S.S. # 23</p>												
	128.0	121.22	6.8	0+00 Exist. M.H.								
	128.0	121.28	6.7	0+41.2								
1+00	128.3	121.37	6.9		0+54.0							
					1+25.6							
2+00	127.6	121.52	6.1		1+50.5							
					2+10.2	2+10.2						
3+00	128.0	121.67	6.3		2+53.6	2+53.6						
	128.0	121.72	6.3	3+30.6								
					3+52.3							
4+00	128.4	121.82	6.6		3+89.2							
					4+31.1	4+33.1						
					4+85.3							
5+00	128.1	121.97	6.1		5+17.1							
					5+58.8							
					5+95.9							
6+00	128.4	122.12	6.3									
	128.2	122.16	6.0	6+28.2	8+54.6 N.E.							

2002-2576  
2000-01373  
C9282

8010  
8000 E Central  
see below 6/7/00  
6-26-68

R- 2002-0373 92422 8010 (8000) E Central - McClung - 4" SCH 40 - Replaced 15' on low end (did not cut street)

SUR 2002-02622 7/24/02 8008 E Central - overnight serv (Starbucks - on site formerly known as 8002-8010)

LAT 66 SUB 4 S.S. # 23

95621  
2922.70

6-9-70

942 W. 2nd No 3023 N Schmitzler 6-4-74 4-10-02

2002-01018

2002-3040 Salina 3033 N Schmitzler 7-11-69 11-21-69 4-10-02

3044 Salina 3055 Schmitzler 11-5-68 12/11/79

269203 3044 Salina 10-31-78