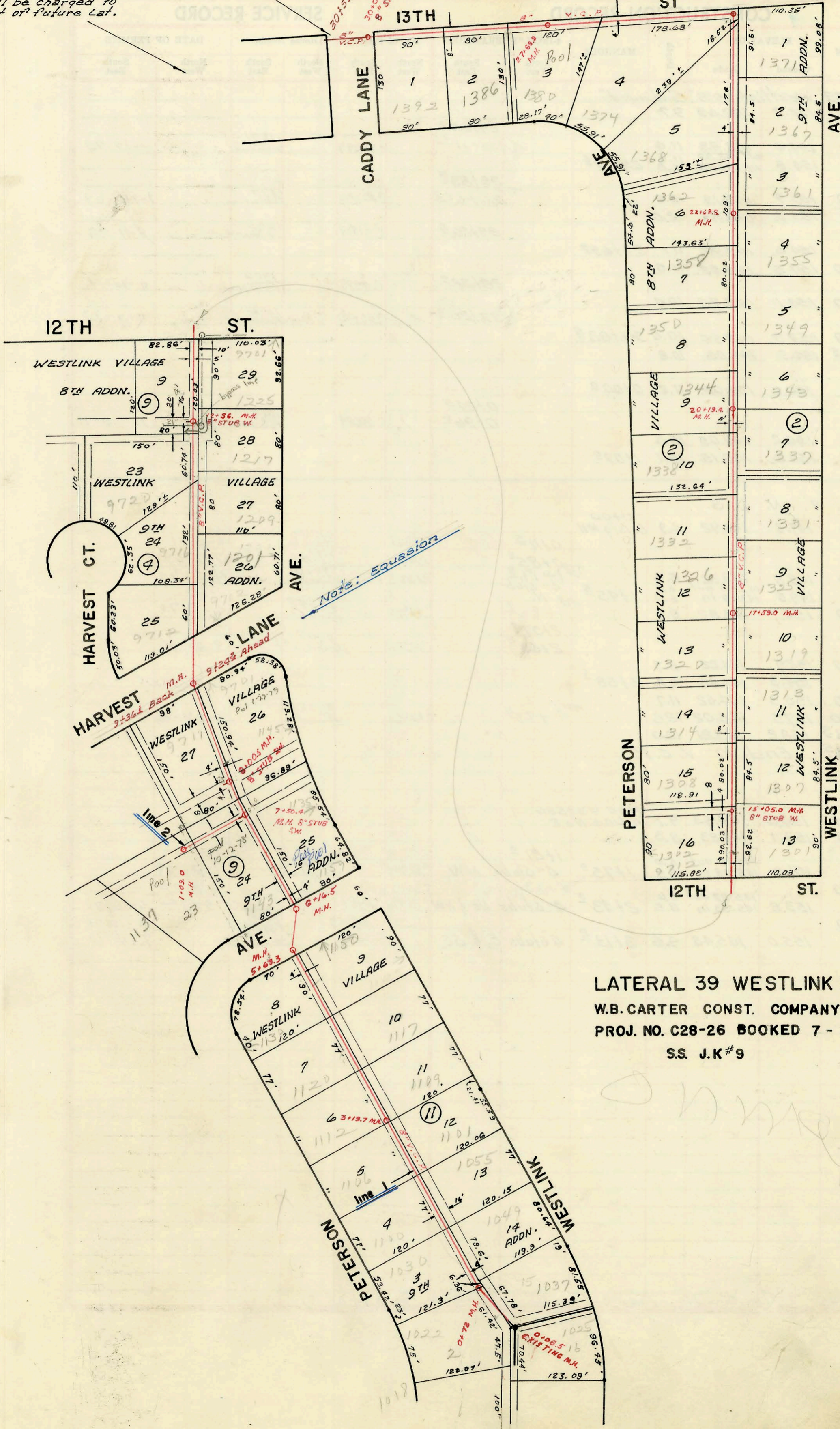


EXT. OF LAT. 39, WESTLINK SEWER
MID-STATES CONST. CO. INC.
J.K.#1, BOOKED 8-26-68

Force Acc.
will be charged to
cost of future Lat.



CONSTRUCTION RECORD

SERVICE RECORD

Line # 1

STATION	ELEVATION		Depth	MANHOLE	4-INCH "Y" BRANCHES		No. of Permit		House Number		DATE OF PERMITS	
	Ground	Grade			North West	South East	North West	South East	North West	South East	North West	South East
Lat 39, Westlink S.S.												
0+06.5	147.9	136.90	11.0	0+06.5 EXIST. M.H.								
					0+33.0	0+31.0						
1+00	148.8 148.9	out 137.06 137.13	11.7 11.8	0+72.0	1+02.0	1+00.0	C1760 C25323	C37060 C37059	1033 1180 Peterson	1049 1055 Westlink	11-20-69	2-6-73
2+00	148.8	137.38	11.4		2+61.5	2+59.5	C015100	C37058	1106 Peterson	1101 Westlink	7-24-69	2-6-73
3+00	150.0 150.0	137.63 137.68	12.4 12.3	3+19.2	3+40.0	3+38.0	JUN 40 - CO C11627	20002083 C37057	1112 R Peterson	1109 Westlink	9/2/00 11-20-68	2-6-73
4+00	150.5	137.88	12.6		4+19.5	4+17.5	C10809	C37056	1120 Peterson	1117 Westlink	10-4-68	2-6-73
					4+93.8	4+91.8	C9853	C17891	1130 Peterson	1150 Peterson	7-30-68	2-5-70
5+00	149.9	138.13	11.8									
	149.6	out 138.29 in 138.39	11.3 11.2	5+63.0								
6+00	149.5	138.48	11.0									
	149.2	out 138.52 in 138.62	10.7 10.6	6+16.5								
7+00	149.3	138.83	10.5		6+88.4		C21874		1143 Peterson	1135 Westlink	11-20-70	4-8-71
8+00	150.1	138.95	11.2	7+50.0								
	151.0	139.07	11.9	8+00.5								
9+00	153.0	139.33	13.7		8+23.0	8+22.0	C25378	C26292	9711 Harnack	9701 Harnack	7-8-71	8-10-71
	154.0	139.40	14.6	9+36.0 Back 9+24.0 Ahead								
10+00	155.9	139.58	16.3									
					10+06.0							
					10+30.0	10+24.5	C23672	C36511	9712 Harnack	1201 Westlink	11-9-71	12-28-72
11+00	156.9	139.83	17.1		10+72.0		C25105		9716 Harnack		6-24-71	
						11+39.0				1209 Westlink		5-23-72
12+00	155.1	140.08	15.0		11+96.0							
						12+18.0				1217 Westlink		8-18-72
	153.9	140.22	13.7	12+56.0								
					12+85.0							
					12+97.0					1225 Westlink		11-12-71
13+00	152.4	140.33	12.1									
14+00	150.3	140.58	9.7									
					14+53.0	14+51.0	C17260	C29420	1302 Peterson	1301 Westlink	12-10-69	12-13-71
15+00	149.6	140.85	8.8	15+05.0								
					15+42.0	15+40.0	C12311	C38915	1308 Peterson	1307 Westlink	1-22-69	5-11-73
16+00	149.6	141.03	8.6		16+15.0	16+13.0	C19562	C37370	1314 Peterson	1313 Westlink	6-3-70	2-22-73
					16+93.8	16+91.8	C17193		1320 Peterson		12-4-69	
17+00	149.8	141.23	8.6		17+31.0					1319 Westlink		5-2-73
	149.9	141.35	8.6	17+59.0								
					17+71.0					1326 Peterson		7-8-68
18+00	150.1	141.43	8.7		17+91.5					1325 Westlink		5-2-73
					18+58.0	18+67.3	C26907	C35471	1332 Peterson	1331 Westlink	8-30-71	10-18-72
					18+76.0							
19+00	150.2	141.63	8.6									
					19+23.0					1338 Peterson		3-26-70
20+00	150.3	141.83	8.5							1337 Westlink		12-10-73
					19+56.0							
					20+08.0					1344 Peterson		7-8-68
	150.3	141.87	8.4	20+19.0								
					20+31.7 20+39.8					1343 Westlink		7-9-74
					20+92.0					1350 Peterson		4-16-69
21+00	150.4	142.03	8.4									
					21+29.0					1349 Westlink		5-15-73
22+00	150.6	142.23	8.4		21+67.0					1358 Peterson		7-8-68
					22+14.0					1362 Peterson		3-9-70
					22+57.0					1362 Westlink		3-9-70
	150.7	142.37	8.4	22+68.0								
										1361 Westlink		9-5-74
23+00	150.9	142.43	8.5		23+71.0							
										1368 Peterson		12-3-69
					23+78.2					1367 Westlink		5-2-73

Note: See next page