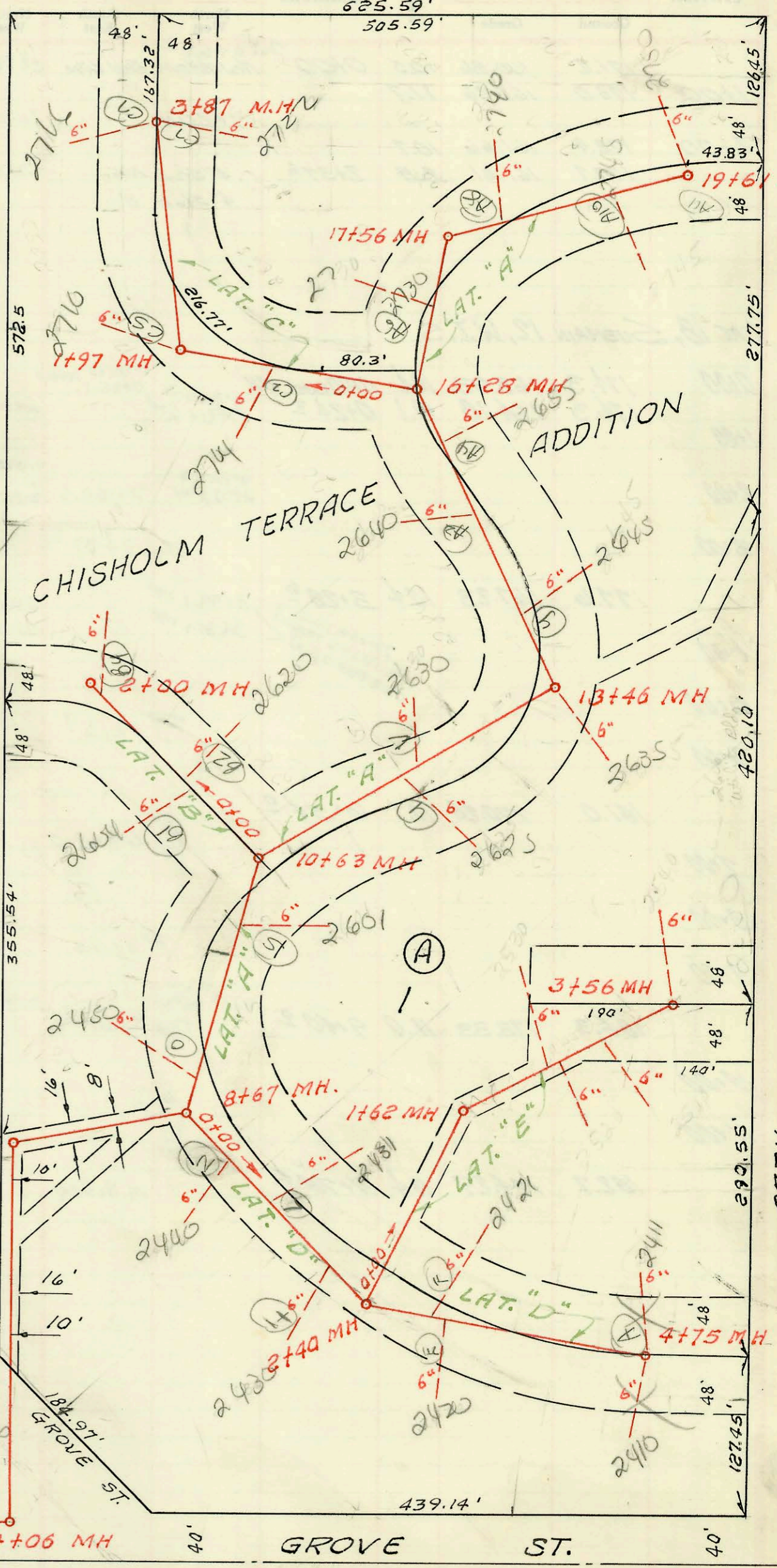


VOLUTSIA AVE.



Plot 10-32

8" lines are in public easements

Heritage Park

0+000 New M.H. on
Existing 36" S. S.

CHISHOLM TERRACE ADDITION
PRIMROSE PARK PLAZA APTS.
SANITARY SEWER
PRIVATE CONTRACT

98- 2-3-98 2606 & 27th (Utility Bldg) -
Betsa trenching - Bldg sewer eliminated when
line & abandoned for new Bldg at 2500 & 27th.
Bldg sewer redirected to line A -

SEPT. 1968
9-14-2-14

Allied utilities
Lippoldt Waching
Service

CONSTRUCTION RECORD						SERVICE RECORD						
STATION	ELEVATION		Depth	MANHOLE	4-INCH "Y" BRANCHES		No. of Permit		House Number		DATE OF PERMITS	
	Ground	Grade			North West	South East	North West	South East	North West	South East	North West	South East
LAT. A 0+00	142.0	127.43 out 129.81 in	14.6'	0+00								
1+00	141.1	130.27 out 130.39 in	10.8'	1+06								
2+00												
3+00												
4+00	144.5	131.87 out 131.99 in	12.6'	4+06								
5+00												
6+00												
7+00	145.5	133.57 out 133.67 in	11.9'	7+21								
8+00	146.2	134.40 out 134.50 in	11.8'	8+67	NE 8+97							
9+00												
10+00												
11+00	148.5	135.43 out 135.53 in	7.02'	10+63								
12+00												
13+00	141.6	137.00 out 137.10 in	4.6'	13+46								
14+00												
15+00												
16+00	145.3	138.51 out 138.61 in	6.8'	16+28								
17+00	148.0	139.25 out 139.35 in	8.8'	17+56								
18+00												
19+00	149.8	140.30	9.4'	19+61	NE							
LAT. B 0+00	142.8	135.58	7.2'	0+80								
1+00												
2+00	141.3	136.58	4.7'	2+00								
LAT. C 0+00	145.3	138.61	6.7'	1+97								
1+00	144.0	137.60 out 137.70 in	4.4'	1+97								
2+00												
3+00	145.0	140.65	4.4'	3+97								
LAT. D 0+00	149.0	134.50	14.5'	2+40								
1+00												
2+00	152.5	137.70 out 135.80 in	14.8'	2+40								
3+00												
4+00	152.3	136.98	15.3'	4+75								
LAT. E 0+00	152.5	135.80	16.7'	1+82								
1+00												
2+00												
3+00												
4+00												
5+00												
6+00												
7+00												
8+00												
9+00												
10+00												
11+00												
12+00												
13+00												
14+00												
15+00												
16+00												
17+00												
18+00												
19+00												
20+00												
21+00												
22+00												
23+00												
24+00												
25+00												
26+00												
27+00												
28+00												
29+00												
30+00												
31+00												
32+00												
33+00												
34+00												
35+00												
36+00												
37+00												
38+00												
39+00												
40+00												
41+00												
42+00												
43+00												
44+00												
45+00												
46+00												
47+00												
48+00												
49+00												
50+00												

C9752-2510 E.27th - Sewer Diff - 8-12-68 - top m.w. 3+56
 C9755-2540 E.27th - top m.w. 3+56
 (Utility 80g not at 200 1-24-90)