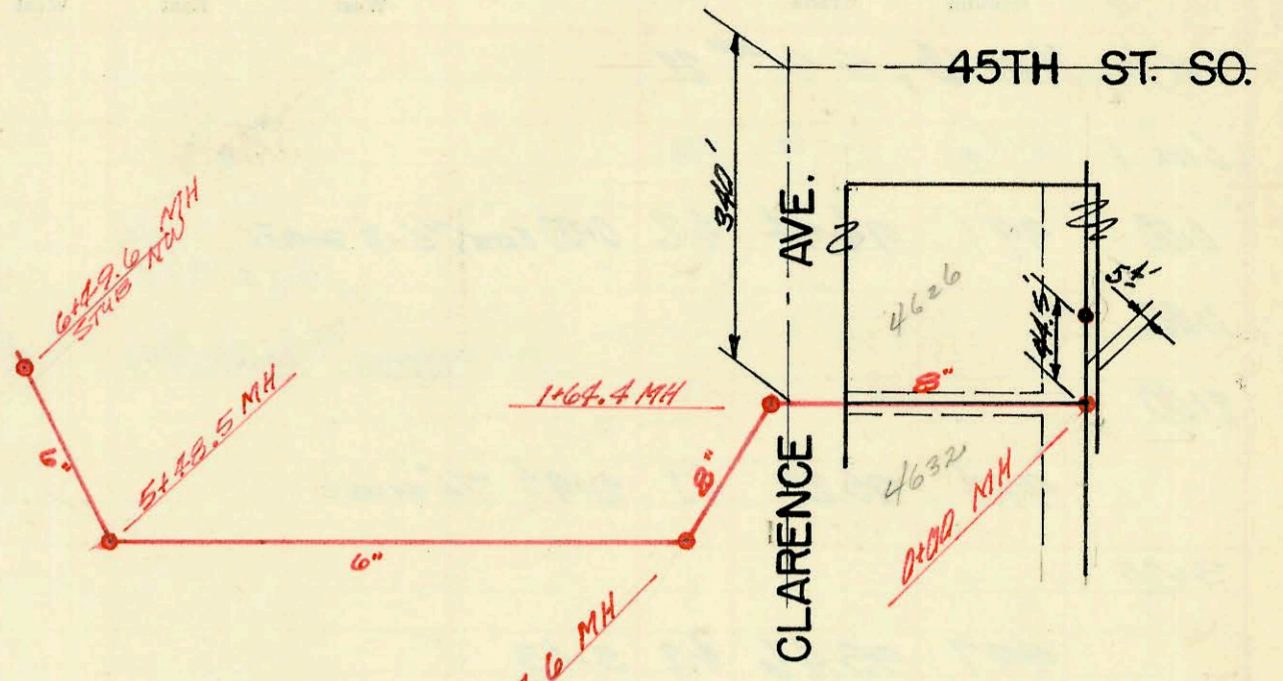


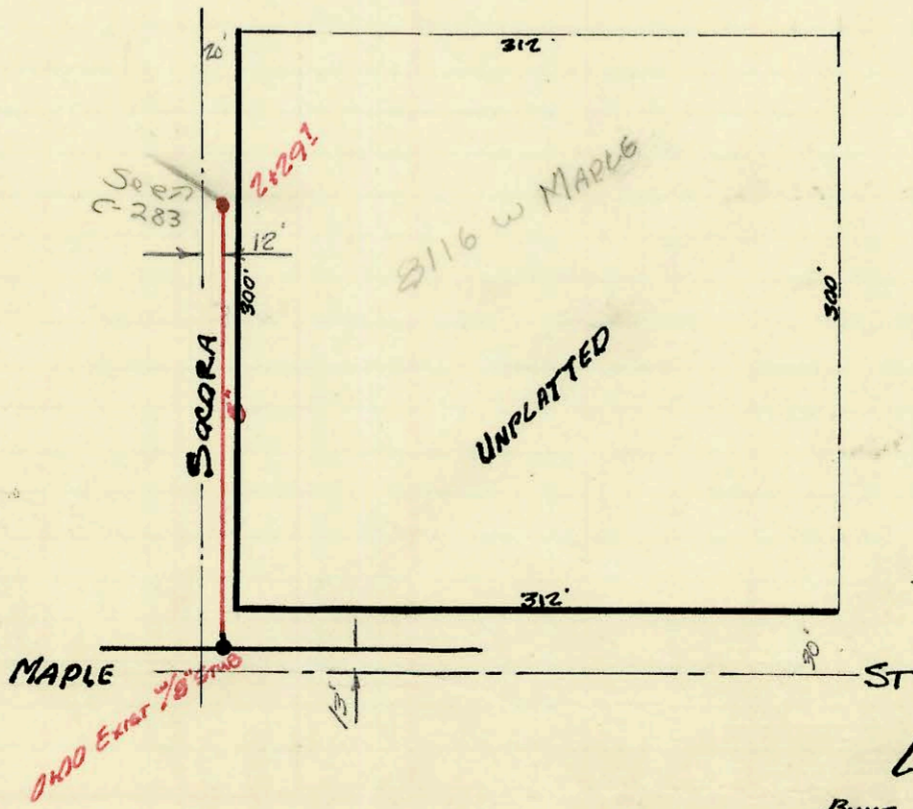
LAT 22, MAIN AS., SS#12.
 BUILT BY: W.B. CARTER, CONST. CO. INC.
 BOOKED OCT 27, 1971 FROM 266-Y
 PERS. NO. DBKL571014

ON MAP



PRIVATE SEWER FOR
 CESSNA ELEMENTARY SCHOOL
 BOOKED FROM PLAN

ON MAP



LAT 3, MAIN 4, S.W. I
 BUILT BY MID-STATES CONST. CO. INC.
 BOOKED 18 FEB 72 FROM K-106
 PERS. NO. DBKL 571023

ON MAP

