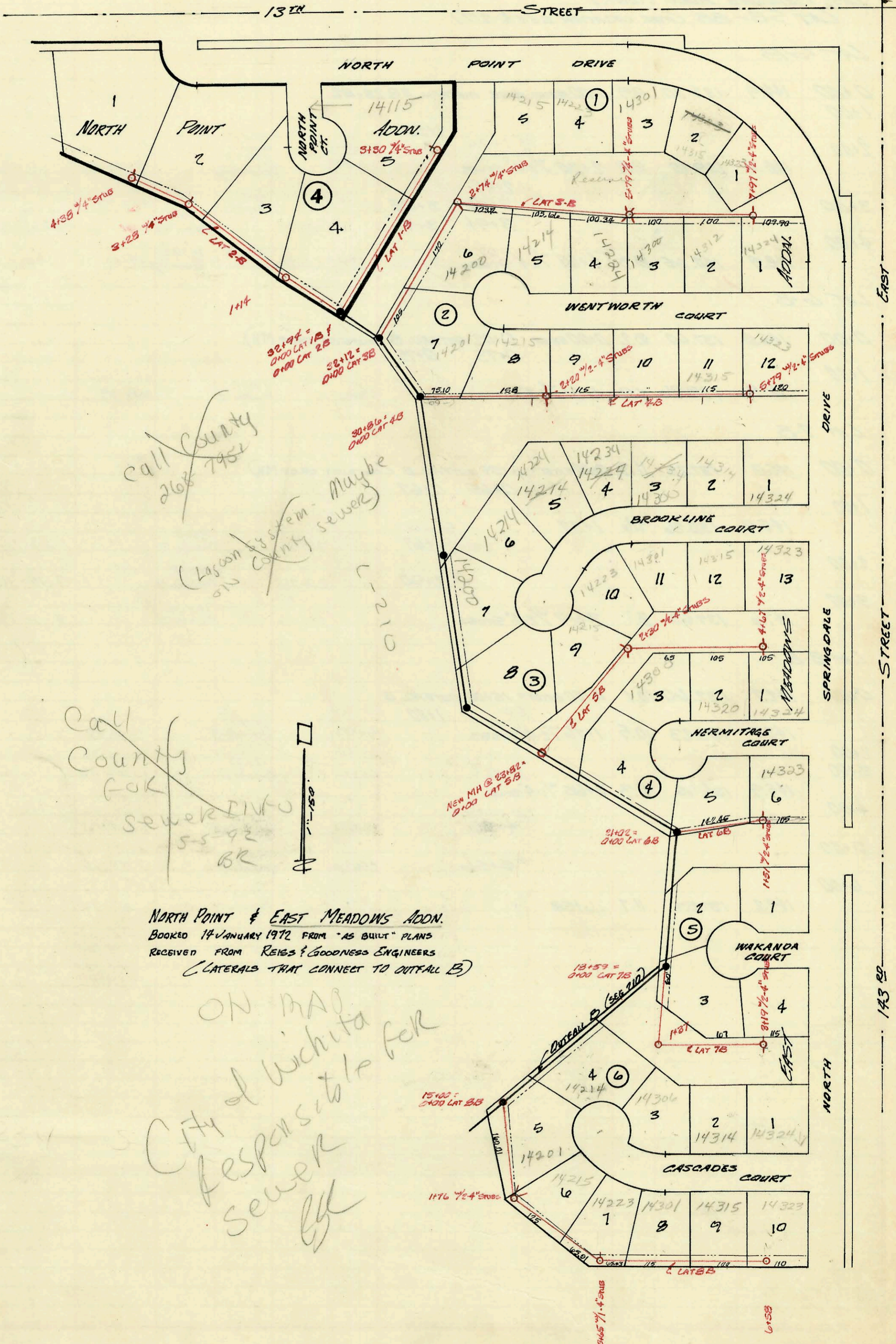


SERVICE RECORD

CONSTRUCTION RECORD



Call County 268 7952

(Loss on system - Maybe on County sewer)

Call County for sewer info 55-92 BR

NORTH POINT & EAST MEADOWS ADDN.
BOOKED 14 JANUARY 1972 FROM "AS BUILT" PLANS
RECEIVED FROM REIBS & GOODNESS ENGINEERS
(LATERALS THAT CONNECT TO OUTFALL B)

ON MAP City of Wichita responsible for sewer

EAST DRIVE
SPRINGDALE STREET
143 RD
NORTH

CONSTRUCTION RECORD						SERVICE RECORD						
STATION	ELEVATION		Depth	MANHOLE	4-INCH "Y" BRANCHES		No. of Permit		House Number		DATE OF PERMITS	
	Ground	Grade			North West	South East	North West	South East	North West	South East	North West	South East
THE VILLAS AT CRESTVIEW (cont.) LAT 1-A-1-A (FOR LOCATION SEE L-211)												
0+00			7.7	0+00 EXIST = 2+28								
1+00			5.8	1+09								
2+00			4.2	2+13		1+49						
					2+33							
						2+78						
						2+81						
3+00			4.4	3+25 1/2" STUBS								
					2+89							
					2+92							
							440 Pk - co	2003-	46E R			
							replace 20' pipe	01071	Via Rama Dr			4-21-03
NORTH POINT (Lots 1-5) & EAST MEADOWS ADDN.												
LAT 1-B												
0+00	141.9	137.13	4.8	0+00 EXIST = 32+94								
1+00												
						1+50						
2+00												
3+00	145.0	138.45	6.5	3+30 1/4" STUB								
LAT 2-B												
0+00	141.9	137.13	4.8	0+00 EXIST = 32+94								
1+00												
						1+14						
2+00												
						2+06						
3+00												
						3+28 1/4" STUB						
4+00												
						4+38 1/4" STUB						
LAT 3-B												
0+00	145.1	138.34	6.8	0+00 EXIST = 32+12								
1+00												
2+00												
						2+74 1/4" STUB	3+04.0	C56710	14200	Wentworth		7-14-76
3+00	146.6	139.81	6.8		3+68	3+99		C58128	14225	Wentworth		9-22-78
4+00					4+26	4+24			14214	Wentworth		
5+00					5+12.0			C77060	14224	Wentworth		3-28-80
					5+79 1/4" STUBS			57088	14300	Wentworth		8-6-76
6+00	153.3	141.43	11.9		6+19	7+12		C6310	14312	Wentworth		7-20-77
7+00					7+52	7+29		C53473	14325	Wentworth		10-30-78
					7+97 1/2" STUBS	7+89.5			14324	Wentworth		11-3-76
												12-5-77
LAT 4-B												
0+00	148.6	137.68	10.9	0+00 EXIST = 30+86								
1+00												
						0+52	0+54	C56567	14201	Wentworth		7-6-76
2+00						1+50	1+52					
						1+96						
3+00	153.3	141.61	11.7		2+20 1/2" STUBS			C31926	14215	Brookline		5-1-72
								C58646	14214	Wentworth		11-12-76
4+00						3+95	3+97		14234	Brookline		3-1-77
								C59429				
5+00						4+97	4+99					
								C56128	14315	Wentworth		6-25-76
								C55990	14314	Brookline		7-15-76
	154.7	143.05	11.7	5+79 1/2" STUBS					14324	Brookline		6-17-76
LAT 5-B THRU LAT 8-B ON PAGE L-213												