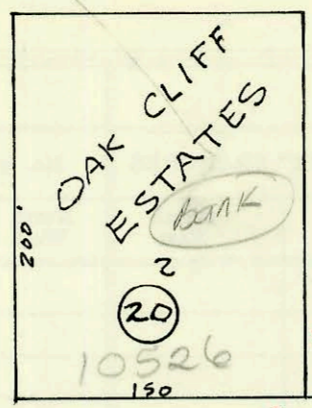




LAT 14, MAIN 9, SWI
468-81902 (606038)
Built By Stannard Const.
Booked 5-17-89



3+90.9
4\"/>

MAPLE

MAIZE

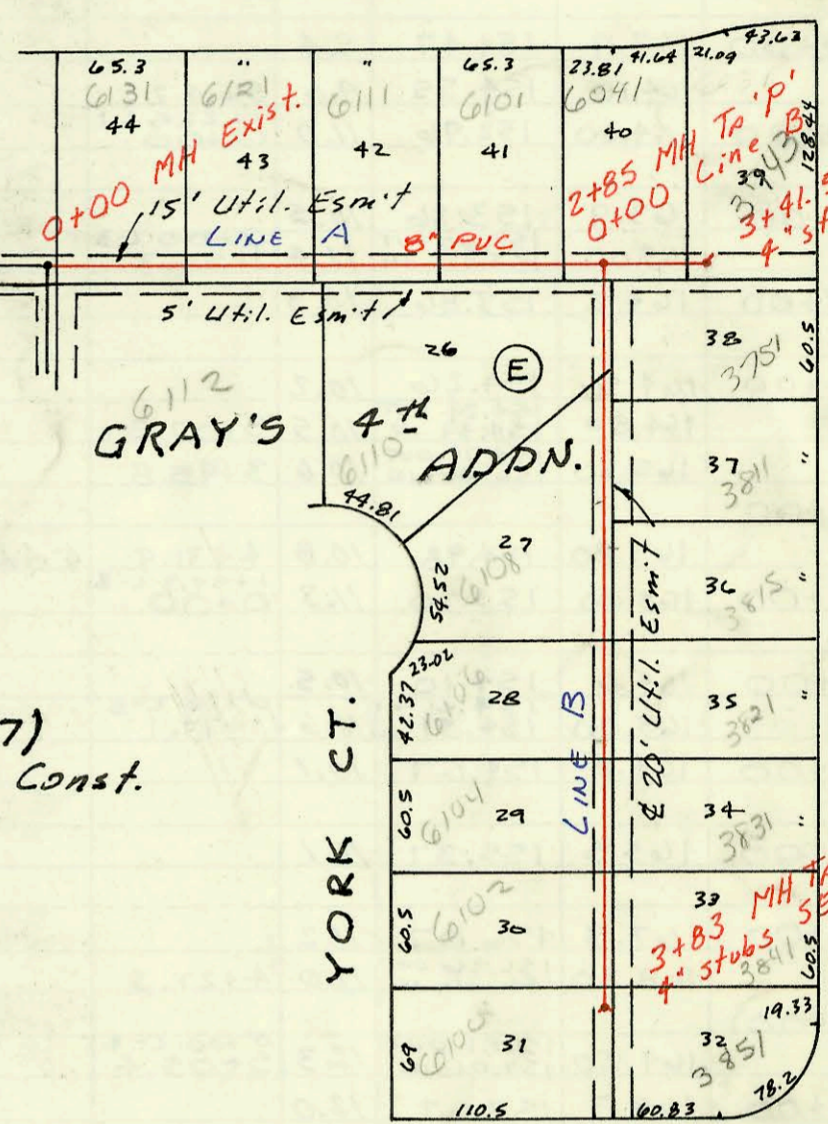
Q+00 MH TP 'P'
75'

Scale 1"=100'



SCALE 1"=100'

JUNO

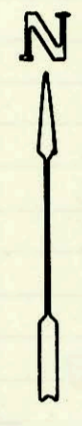


GRAY'S
4th ADDN.

YORK CT.

BRUMETT

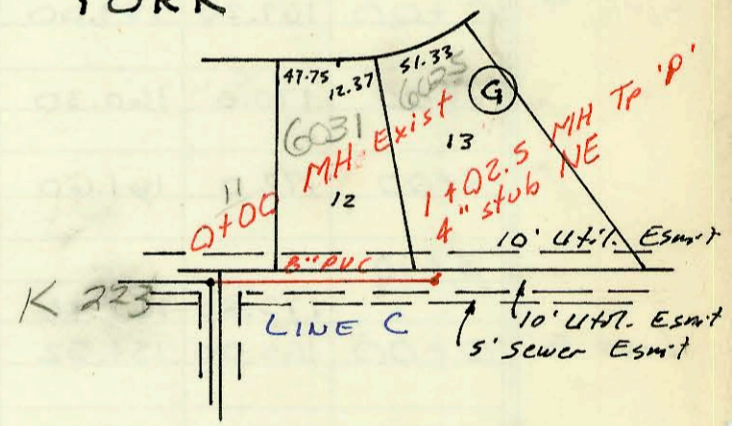
LAT 265, SWI
468-81827 (608067)
Built By Stannard Const.
Booked 5-18-89



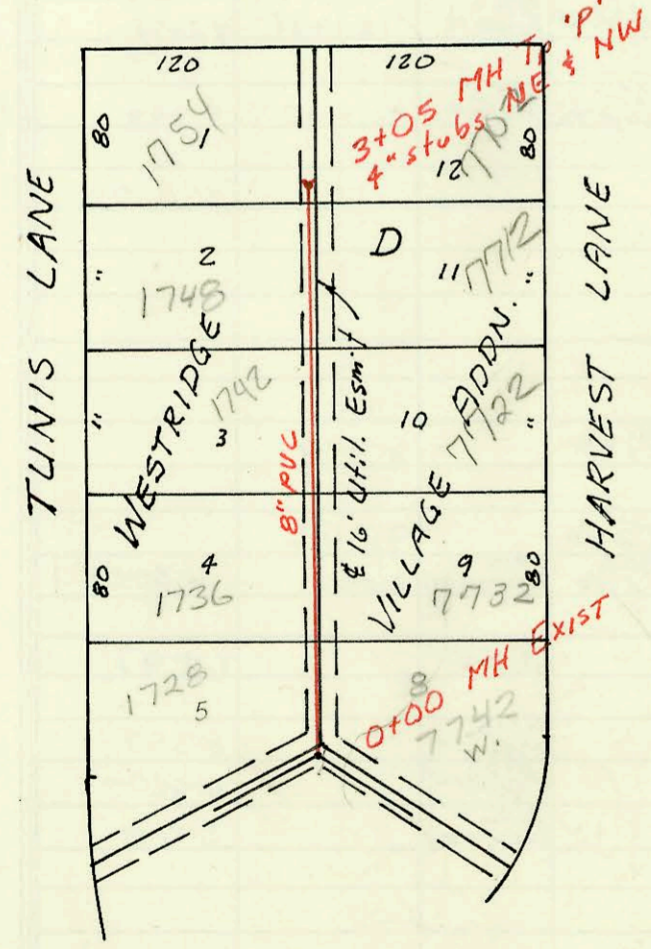
SCALE 1"=100'

LAT 280, SWI.
468-81933 (607663)
Built By Stannard Const.
Booked 5-25-89 From Plan

YORK



17th ST. NO.

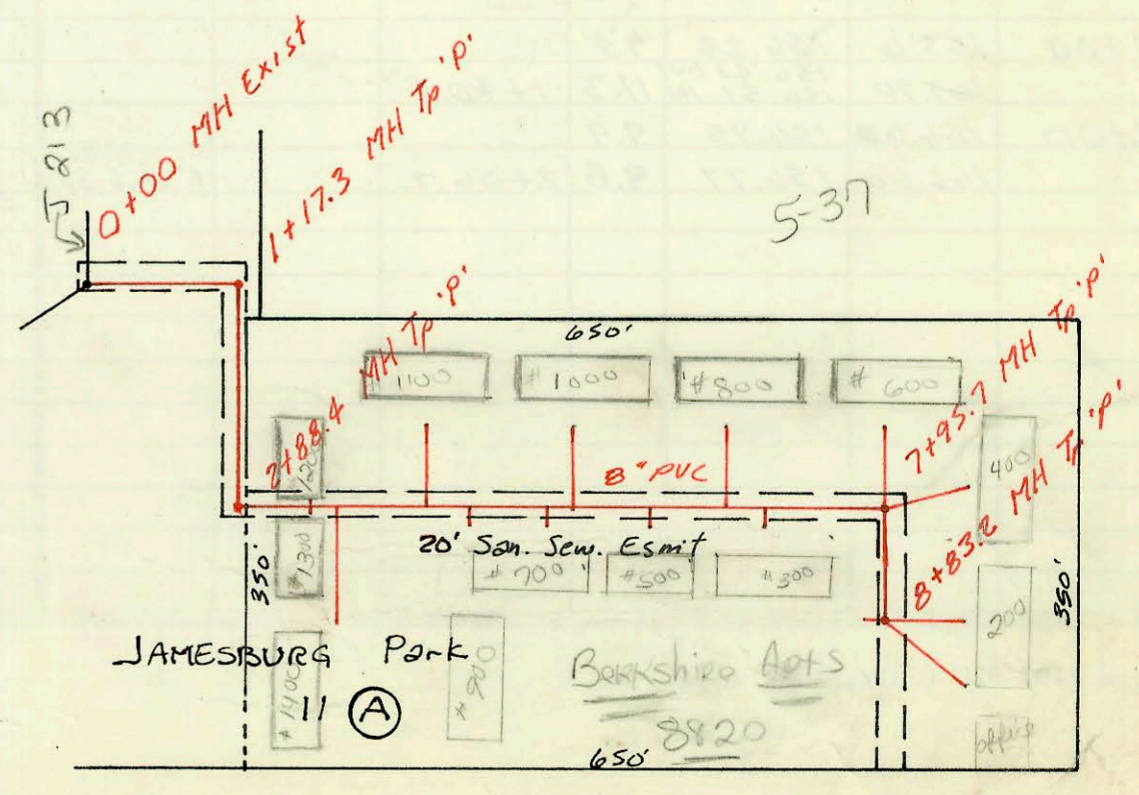


TUNIS LANE

HARVEST LANE



SCALE 1"=150'



Priv. S.S. for Berkshire Apt.
468-76-245-80001-000-000-203
Built By Stannard Const.
Booked 5-25-89 from As Built.

JAMESBURG Park

Berkshire Apts

Westlawn

Tyler Road

CONSTRUCTION RECORD

SERVICE RECORD

STATION	ELEVATION		Depth	MANHOLE	4-INCH "Y" BRANCHES		No. of Permit		House Number		DATE OF PERMITS	
	Ground	Grade			North West	South East	North West	South East	North West	South East	North West	South East
LAT 14, MAIN 9, SWI												
0+00	134.5	127.48	7.0	0+00								
1+00	135.7	128.38	7.3									
2+00	135.6	129.28	6.3									
3+00	136.5	130.18	6.3									
	137.4	131.00	6.4	3+90.9	4" stub NW		23159		10526 W. Maple		5-15-89	
LAT 265, SWI												
LINE A												
0+00	121.40	108.58	12.8	0+00	4" SDR 35 0+36.6 TAP		00727		6131 JUNO		7-24-91	
1+00	121.4	109.19	12.2		4" SDR 35 0+77.0 TAP 1+68.0 TAP	1+87.0 TAP	1345	22971	6121 JUNO 6111 JUNO	6112 YORK	10-23-91	4-21-89
2+00	121.8	109.80	12.0		4" SDR 35 2+40.0 TAP	2+31.0 TAP	26407	23124	6101 W. JUNO 6041 JUNO	6110 YORK CT	10-29-90	5-10-89
	122.6	110.32 OUT 110.44 IN	12.3	0+00 L-B 2+85	4" SDR 35 2+80.0 TAP	3+12.0 TAP	00611	00876	6041 JUNO 3743 BRUMMETT	3751 BRUMMETT	7-2-91	8-19-91
3+00	122.3	110.50	11.8		4" stub NE		27082	27363			2-13-91	3-28-91
LINE B												
0+00	122.6	110.44	12.2	0+00	1+21.0 TAP	0+88.0 TAP	23358	23622	608 YORK CT	3811 BRUMMETT	6-14-89	7-28-89
1+00	122.6	110.84	11.8		1+45.0 TAP	1+48.0 TAP		23981		3815 BRUMMETT		8-21-89
2+00	122.5	111.24	11.3		2+45.0 TAP 2+84.0 TAP	2+37.0 TAP 3+08.0 TAP	23123	26071	6106 YORK CT 6104 YORK CT	3821 BRUMMETT 3831 BRUMMETT	5-10-89	9-4-90
3+00	122.0	111.64	10.4		3+62.0 TAP	3+13.0	23299	23601	6102 YORK CT	3841 BRUMMETT	6-2-89	7-26-89
	122.0	111.97	10.0	3+83	4" stub SW	4" stub SE	23122	23126	6108 YORK CT	3851 BRUMMETT	5-10-89	5-10-89
LINE C												
0+00	123.22	112.50	10.7	0+00	0+37.5 TAP		23203	24136	6031 YORK ST		5-23-89	10-18-89
1+00	124.20	112.91	11.3	1+02.5	4" stub NE		24964		6025 YORK		3-19-90	
LAT 280, SWI												
0+00	157.3	143.01	14.3	EXIST 0+00	0+20.0 TAP 4" SDR 35 0+90.0 TAP	4" SDR 35 0+28.0 TAP	27061	92-12088-7	1728 TUNIS	7742 HARVEST	2-13-91	7-14-92
1+00	157.0	143.41	13.6		4" SDR 35 1+52.0 TAP	1+62.5 TAP	92-4742-7	92-1088-7	1726 TUNIS	7732 HARVEST	4-6-92	7-7-92
2+00	156.2	143.81	12.4		4" SDR 35 2+57.0 TAP	2+80.0 TAP	23922-7	25497	1742 TUNIS	7742 HARVEST	6-11-91	6-8-90
3+00	156.6	144.21	12.4		4" SDR 35 2+57.0 TAP	2+80.0 TAP	92-16247-7	23307	1748 TUNIS	7712 HARVEST LN	7-28-92	5-10-90
	156.7	144.23	12.5	3+05	4" stub NW	4" stub NE	92-26427-7	25237	1754 TUNIS	7702 HARVEST LN	7-2-92	4-27-90
Pri. S.S. for Berkshire Apartments												
0+00	161.56	153.31	8.3	EXIST. 0+00								
1+00	162.0	153.83	8.2									
	162.02	153.92 OUT 154.02 IN	8.1	1+17.3								
2+00	162.0	154.32	7.7									
	161.84	154.64	7.2	2+88.4								
3+00	162.0	154.69	7.3		3+45 4" S.L. 5' N 156.07 3+65 4" S.L. 70' S 157.31	3+45 4" S.L. 5' S 156.17	23160	23187	8820 Westlawn #1200	8820 Westlawn #1300	5-19-89	5-19-89
4+00	162.1	155.14	7.0		4+35 4" S.L. 63' N 157.02	4+70 4" S.L. 15' S 157.10 5+30 4" S.L. 5' S 157.41	23185	23184	8820 Westlawn #1100	8820 Westlawn #900	5-19-89	5-19-89
5+00	163.1	155.60	7.5		5+50 4" S.L. 63' N 157.48	6+10 4" S.L. 15' S 157.73	23182	23183	8820 Westlawn #1000	8820 Westlawn #700	5-19-89	5-19-89
6+00	164.5	156.05	8.5		6+70 4" S.L. 63' N 157.96	7+00 4" S.L. 15' S 158.09	23180	23181	8820 Westlawn #800	8820 Westlawn #500	5-19-89	5-19-89
7+00	165.3	156.50	8.8		7+95.7 4" S.L. 63' N 159.27	7+95.7 4" S.L. 67' E 160.21	23178	23179	8820 Westlawn #600	8820 Westlawn #300	5-19-89	5-19-89
	167.38	156.93 OUT 156.98 IN	10.5	7+95.7			23134	23134	8820 Westlawn #400	8820 Westlawn	5-19-89	5-19-89
8+00	167.75	157.35	10.4	8+83.2	8+83.2 4" S.L. 16' W 162.07 8+83.2 4" S.L. 80' SE 160.50	8+83.2 4" S.L. 62' E 160.65	23177	23135	8820 Westlawn #200	8820 Westlawn #100	5-19-89	5-19-89