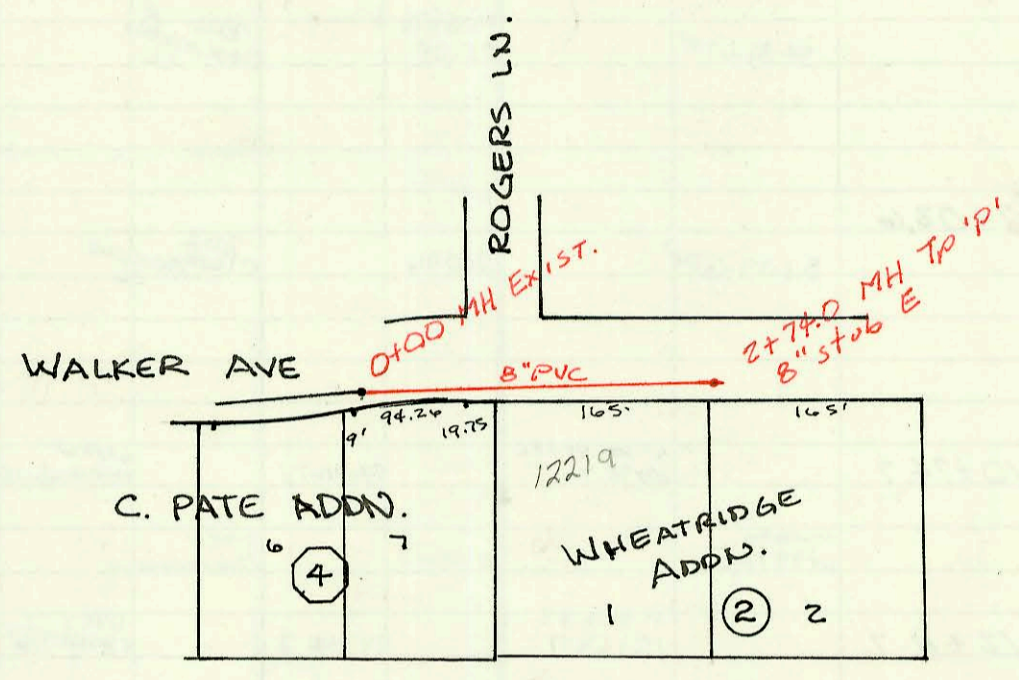
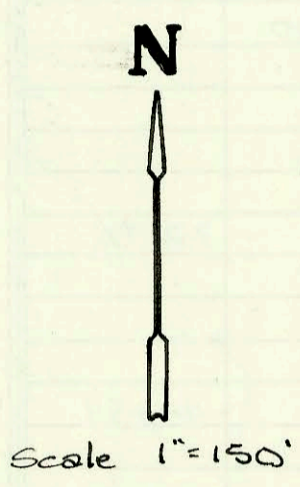
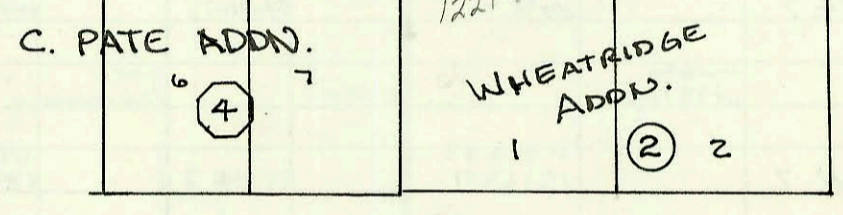


Priv. S.S. for 315 S. HOOPER  
 209 PPS, Built By Bowers Plumb.  
 Booked 6-2-89



Priv. SAN. SEWER EXT. TO LAT 1,  
 MAIN 1, COWSKIN INTERCEPTOR.  
 257 PPS Built By HOPPER CONST.  
 Booked 4-10-91 from As Built.



CONSTRUCTION RECORD						SERVICE RECORD									
STATION	ELEVATION		Depth	MANHOLE	4-INCH "Y" BRANCHES		No. of Permit		House Number		DATE OF PERMITS				
	Ground	Grade			North West	South East	North West	South East	North West	South East	North West	South East			
LAT 1, LINE 2A (CONT.)	MAIN 1, CSI (CONT.)														
2+00	132.5	126.05	6.5			2+31.2 TAP	23111	23113	12422	IRVING		5-9-89			
	132.43	126.25	6.2	2+66.2	2+81.6 TAP		23479		12421	LYNDDALE		7-5-89			
3+00	132.2	126.37	5.8												
4+00	132.6	126.71	5.9		3+99.8 TAP	3+66.2 TAP	23381	23330	12401	LYNDDALE	12412	IRVING	6-19-89	5-16-90	
						4+17.1 TAP		23144			12405	IRVING		5-12-89	
5+00	132.5	127.05	5.5		5+16.1 TAP		23351		12335	LYNDDALE			6-11-89		
	132.65	127.20	5.5	5+45.1		5+77.1 TAP		21238			12330	IRVING		11-06-89	
6+00	132.9	127.38	5.5		6+31.1 TAP		23222		12325	LYNDDALE		5/31/89			
						6+54.1 TAP		23526			12300	IRVING		7-24-89	
7+00	132.1	127.71	4.4		7+33.1 TAP	7+44.1 TAP	23566	23508	12301	LYNDDALE	12301	ROGERS	7-20-89	7-11-89	
8+00	132.2	128.04	4.2												
	132.75	128.31	4.4	8+82.1	9" stub NE		25625		1400	ROGERS		42903		6-27-90	
LINE 2B	0+00	132.28	126.62	5.7	20+91.6 L-2	0+00									
		132.20	126.88	5.3	0+64.8										
1+00	132.4	126.99	5.4												
						1+60.8 TAP		23483	23999	1454	HORNBECKER	1470	HORNBECKER	7-6-89	10/2/89
2+00	133.0	127.31	5.7		2+17.8 TAP	1+51.8 TAP	23581		12421	IRVING			7-24-89		
						2+61.3 TAP		26762			12420	WALKER		12-14-90	
3+00	133.4	127.63	5.8												
						3+23.1 TAP	3+30.1 TAP	23074	24102	12411	IRVING	12412	WALKER	5-4-89	10-16-89
4+00	133.6	127.95	5.7												
	134.20	128.00	6.2	4+15.1	4+74.1 TAP	4+81.1 TAP	23073	23153	12401	IRVING	12400	WALKER	5-4-89	5-15-89	
5+00	134.5	128.24	6.3												
6+00	135.4	128.53	6.9		5+73.1 TAP	5+69.1 TAP	23786	25506	12325	IRVING	12334	WALKER	7-20-89	6-11-90	
						6+64.1 TAP		25644			12320	WALKER		6-29-90	
7+00	137.4	128.81	8.6		7+01.1 TAP		23324		12321	IRVING			11-9-89		
	138.45	128.97	9.5	7+55.1	4" stub NE	4" stub SE	25762	25580	1451	ROGERS	1471	ROGERS LN	7-18-90	6-15-90	
LINE 2C	0+00	132.58	127.20	5.4	23+13.6 L-2	0+00									
1+00	133.6	127.56	6.0												
	1487.9					6" Riser Assembly South with 2-4" knees	25402		1500	HORNBECKER			5-24-90		
2+00	134.3	127.92	6.4												
								25328			12419	WALKER		5-16-90	
3+00	135.2	128.28	6.9												
	135.92	128.62	7.3	3+94.7											
4+00	136.3	128.72	7.6					24277			12411	WALKER		11-14-89	
5+00	137.7	130.58	7.1					23326			12401	WALKER		6-7-89	
6+00	139.5	132.43	7.1					23283			12331	WALKER		5-31-89	
	141.52	133.44	8.1	6+54.2											
7+00	142.7	134.38	8.3					923908			12321	WALKER		3-19-92	
	143.79	135.98	7.8	7+78.2		4" stub SE		23169			12301	WALKER		5-16-89	
FORCE MAIN	0+00	132.00	122.60	9.4	0-05 L-1	0+00									
	5+05.6	129.3	124.50	4.8											
7+40	130.65	125.40	5.3	7+40											
11+35	127.5	124.00	3.5												
12+55	123.7	118.60	5.1												
12+75	123.0	118.60	4.4												
13+45	127.0	121.70	5.3												
17+35	127.4	121.70	5.7												
17+53.9	130.5	127.6	2.9												
Priv. S.S.	for 3158 S. Hoover														
0+00	106.27	98.56	7.7	EXIST	0+00										
	106.92	100.04	6.9	0+23.3	MH STUB		23016		3158 S	HOOPER			4-26-89		
Priv. SAN	SEWER EXT. for LAT 1, MAIN 1, CSI														
0+00	143.92	136.50	7.4	0+00											
1+00	145.8	137.97	7.8												
2+00	148.5	139.43	9.1			4" SDR 35		19618			12214	WALKER		4-3-91	
	148.87	140.52	8.4	2+74.0		8" stub E									