

Sanitary Sewer Ext. to serve  
Willowwood Mobile Home Park Ph II  
211 PPS Built By A-Plus  
Booked 2-9-90 from As Built Plan  
WP



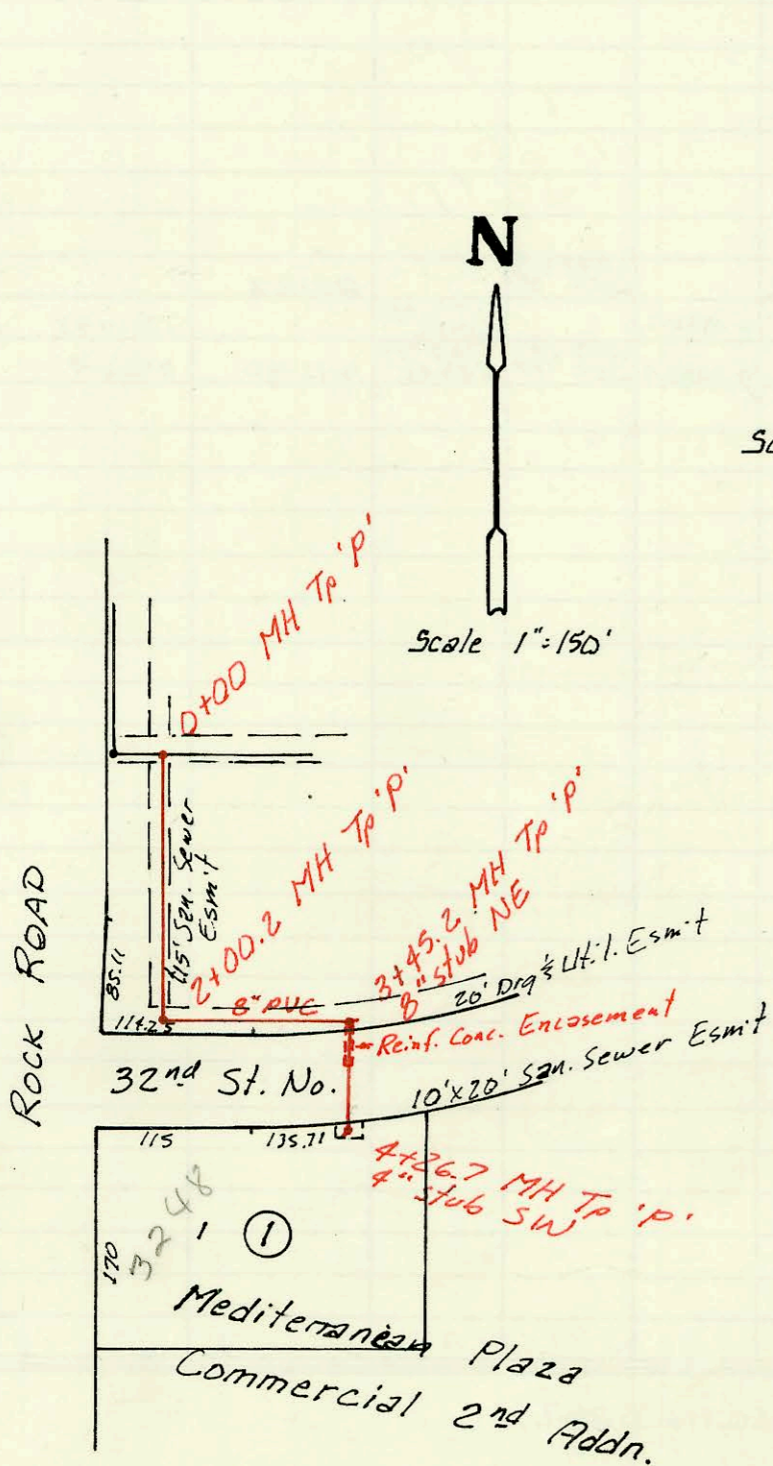
SCALE 1"=100'

23+06.5 MH Tp 'P' Shallow

20+86.5 MH Tp 'P' Shallow

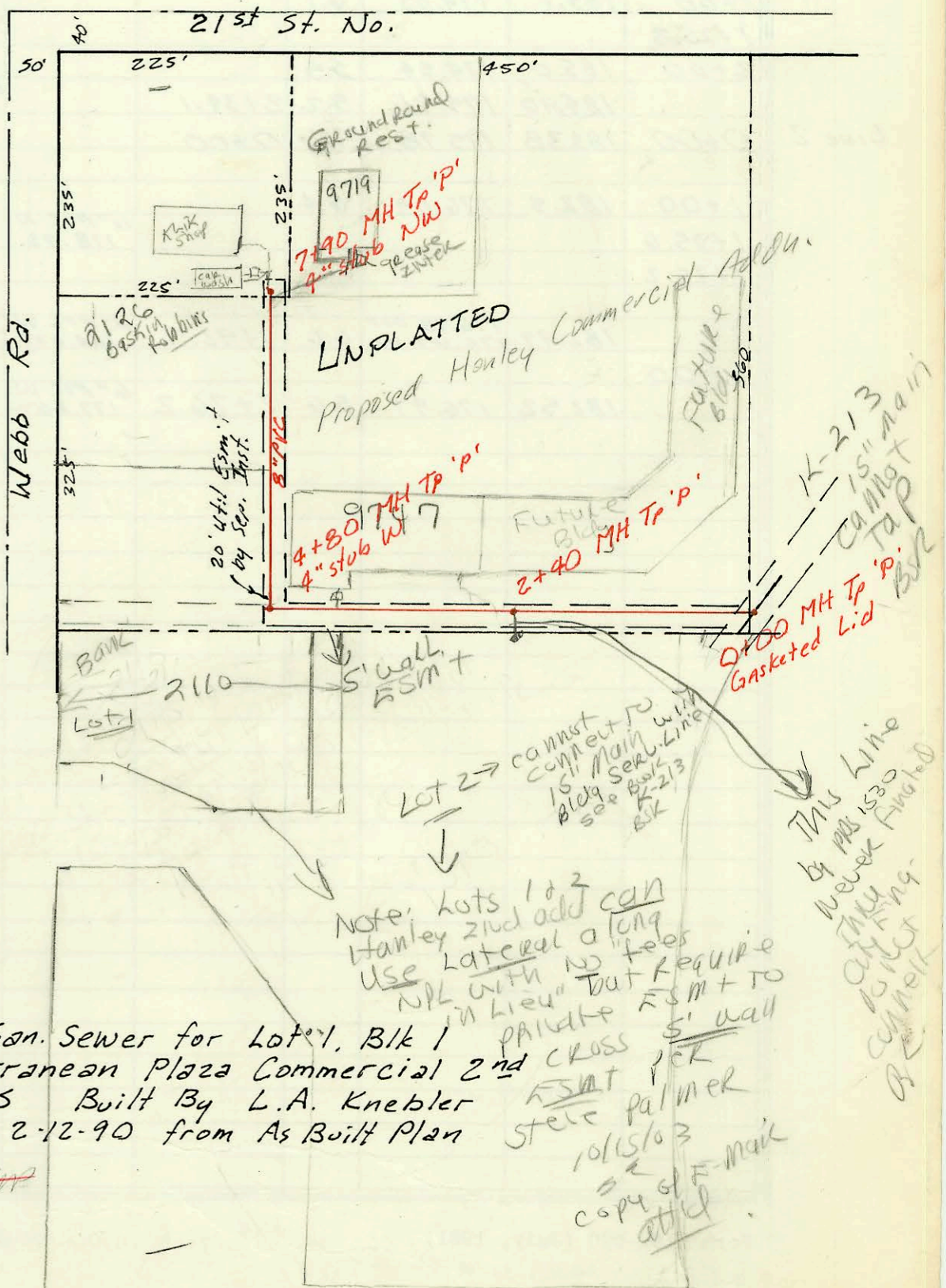
17+05.6 MH Tp 'P' Shallow

Priv. San. Sewer for Hanley Commercial  
(an unplatted tract at the SE corner  
of Webb Rd & 21st St. No.)  
213 PPS built by Mid States Const  
Booked 2-12-90 from As Built Plan  
WP



Scale 1"=150'

Scale 1"=150'



Priv. San. Sewer for Lot 1, Blk 1  
Mediterranean Plaza Commercial 2nd  
214 PPS Built By L.A. Knebler  
Booked 2-12-90 from As Built Plan  
WP

Note: Lots 1 & 2  
Hanley 2nd add can  
use lateral a long  
NPL with no fees  
in lieu but require  
private Esmt to  
cross street  
Steve Palmer  
10/15/03  
copy of F-mail  
attached

K-213  
15" main  
Callot  
Tap  
BVR  
This line  
by MS 1530  
may be  
cancelled  
at  
any  
time

CONSTRUCTION RECORD						SERVICE RECORD						
STATION	ELEVATION		Depth	MANHOLE	4-INCH "Y" BRANCHES		No. of Permit		House Number		DATE OF PERMITS	
	Ground	Grade			North West	South East	North West	South East	North West	South East	North West	South East
Priv. S.S. for Willowood Mobile Home Park, PHASE II												
14+65.9	86.97	80.45	6.5	14+65.9	14+82.9 TAP		23885		Lot 51		9-13-89	
15+00	85.0	80.56	4.4		15+26.0 TAP		23884		Lot 50		9-13-89	
					15+88.9 TAP		23883		Lot 49		9-13-89	
16+00	85.2	80.88	4.3									
17+00	85.3	81.20	4.1									
	85.37	81.22 OUT 81.33 IN	4.2	17+05.6	17+72.9 TAP		23882		Lot 48		9-13-89	
18+00	85.2	81.60	3.6		18+30.9 TAP		23881		Lot 47		9-13-89	
					18+89.9 TAP		23880		Lot 46		9-13-89	
19+00	85.0	81.88	3.1		19+29.6 TAP		23879		Lot 45		9-13-89	
					19+71.6 TAP		23878		Lot 44		9-13-89	
20+00	85.9	82.16	3.7		20+15.6 TAP		23877		Lot 43		9-13-89	
	86.78	82.41 OUT 82.42 IN	4.4	20+86.5	20+70.6 TAP		23876		Lot 42		9-13-89	
21+00	86.6	82.46	4.1		21+06.5 TAP		23875		Lot 41		9-13-89	
					21+49.5 TAP		23874		Lot 40		9-13-89	
22+00	86.4	82.78	3.6		21+90.5 TAP		23873		Lot 39		9-13-89	
					22+38.5 TAP		23872		Lot 38		9-13-89	
23+00	86.0	83.10	2.9		22+77.5 TAP		23871		Lot 37		9-13-89	
	86.18	83.12	3.1	23+06.5	22+95.5 TAP		23870		Lot 36		9-13-89	
3+84.2	85.23	81.75	3.5	3+84.2	3+89.2 TAP		23707		Lot 26		8-7-89	
4+00	84.9	81.80	3.1		4+51.2 TAP		23708		Lot 27		8-7-89	
					4+91.2 TAP		23709		Lot 28		8-7-89	
5+00	84.5	82.08	2.4		5+30.2 TAP		23710		Lot 29		8-7-89	
					5+67.2 TAP		23711		Lot 30		8-7-89	
6+00	84.7	82.37	2.3		6+13.2 TAP		23712		Lot 31		8-7-89	
					6+76.7 TAP		23713		Lot 32		8-7-89	
7+00	85.0	82.66	2.3									
	85.40	82.87 OUT 82.90 IN	2.8	7+71.7								
8+00	85.5	83.00	2.5									
					8+53.2 TAP		23714		Lot 33		8-7-89	
9+00	85.8	83.37	2.4		9+14.5 TAP		23715		Lot 34		8-7-89	
	85.90	83.57	2.3	9+55.5	9+50.5 TAP		23716		Lot 35		8-7-89	
Priv. S.S. for Hanley Commercial												
0+00	194.83	184.43	10.4	0+00								
1+00	195.0	185.10	9.9									
2+00	197.2	185.76	11.4									
	197.63	186.03	11.6	2+40.0								
3+00	197.9	186.43	11.5				2001-22610		9747 SUP E 21ST Rocks		10-19-01	
4+00	197.5	187.10	10.4									
	197.58	187.63 OUT 187.73 IN	10.0	4+80.0	4" stub W 187.98		2003-02737		2110 Wells		10-22-03	
5+00	197.6	187.96	9.6									
6+00	198.3	189.14	9.2									
7+00	201.0	190.31	10.7									
	201.47	191.37	10.1	7+90.0	4" stub NW 195.02	4" sch 40 77.5 TAP	2004-00034		2147 Incorporated	9719 E 21ST	11-2-03	1-6-03
Priv. Sew. for Lot 1, Blk 1, Mediterrean Plaza Com. 2nd												
0+00	209.31	196.06	13.3	0+00								
1+00	209.4	196.38	13.0									
2+00												
	208.10	196.70 OUT 196.80 IN	11.4	2+00.2								
3+00	208.2	197.32	10.9									
	209.65	197.55 OUT 198.10 IN	12.1	3+45.2	8" stub NE 197.70							
4+00	208.6	198.70	9.9									
	209.24	198.99	10.3	4+26.7	6" SDR35 4" stub SW 6" stub		23528		3248 Rock Rd		7-13-89	
Sub 2003-00033 1-6-03 9719 E 21ST (grease INTER) 5-Hack												

SWR 2001-02084 8/21/01 9747 E 21ST - These R Const: (Grease INTER only)  
 2-4" DO, SCH 40 ON OUTLET SIDE, S.V. Cast iron on inlet side - 4H45, Tied back to Bldg (DRAIN)