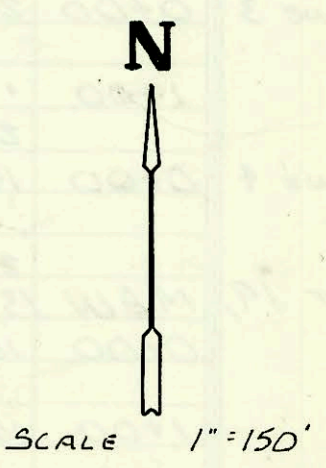
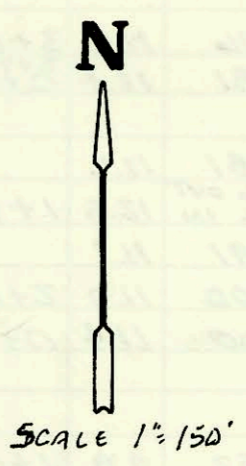
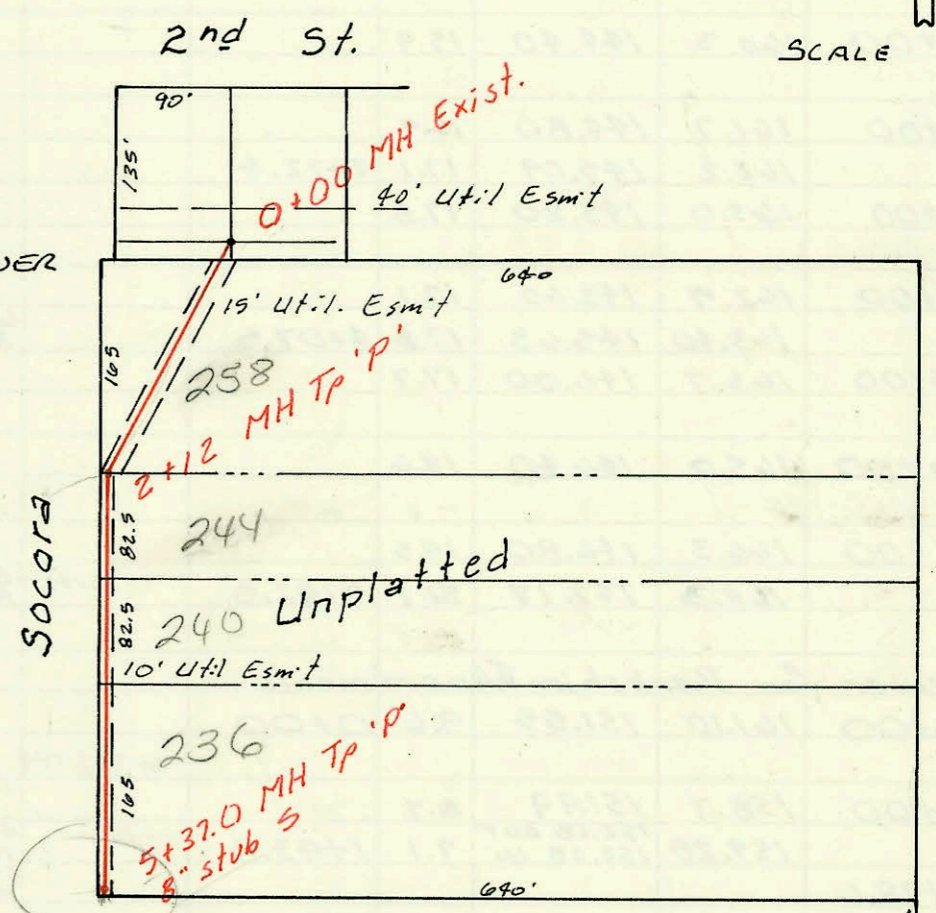


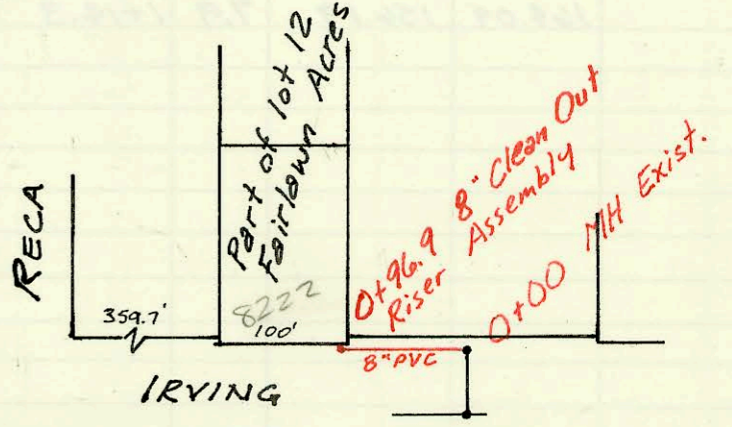
Priv. San. Sewer for Country Club Park Addition  
 219PPS Built By Pearson Exc.  
 Booked 2-22-90 from As Built Plan



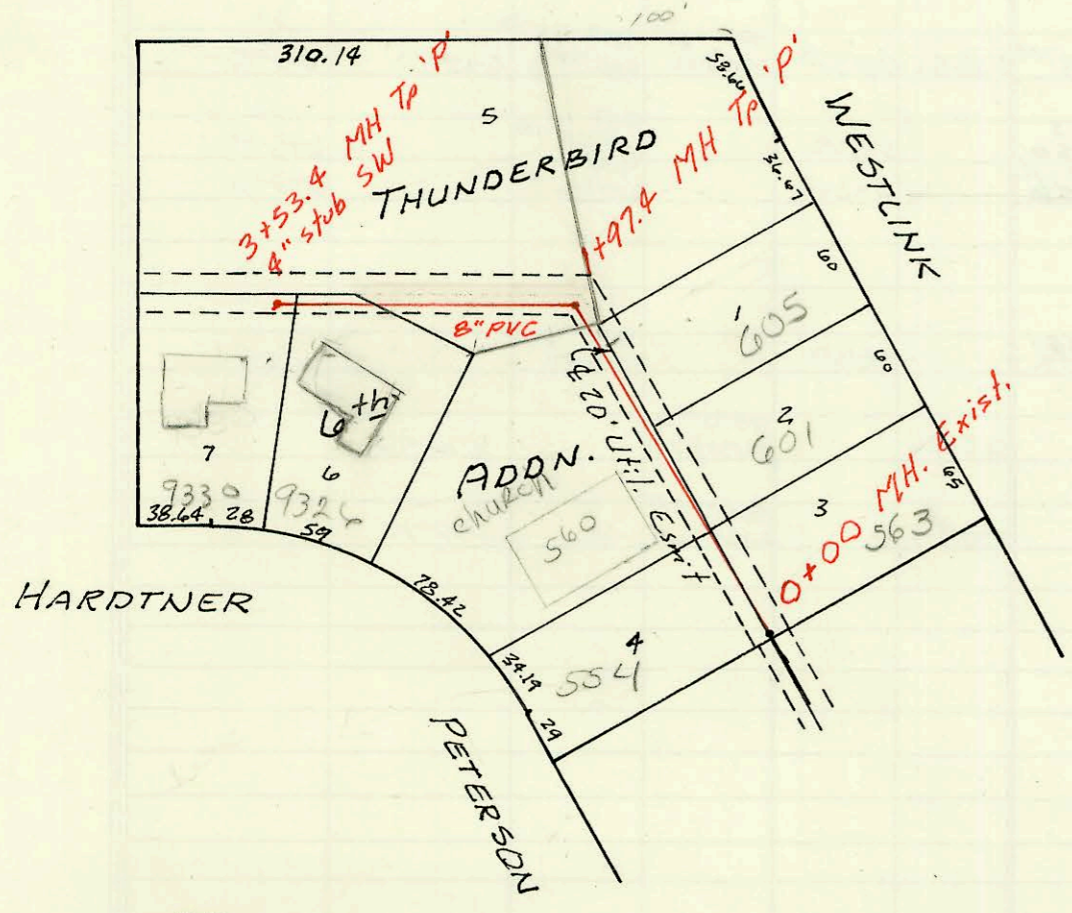
LAT 26, MAIN 1, WESTLINK SEWER  
 468-81960 (740068)  
 Built By Stannard Const.  
 Booked 2-23-90 from Plan.



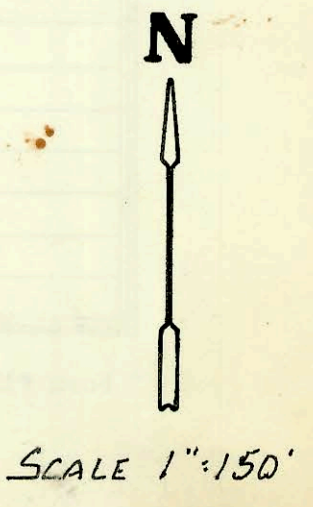
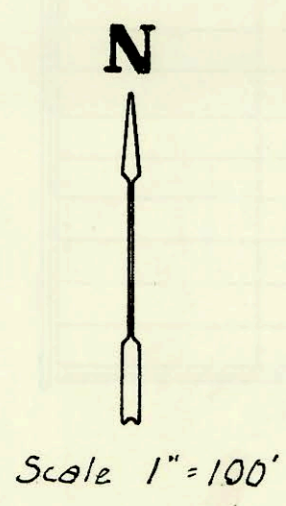
PROP. EXT TO SERVE  
 217 + 223  
 SOCORA  
 5/2003  
 BK



Priv. San. Sewer Extension to serve Lots 12-14 Fairlawn Acres  
 238 PPS Built By  
 Booked 4-9-90 from As Built Plan



LAT 93, WESTLINK SEWER  
 468-81986 (740209)  
 Built By Stannard Const.  
 Booked 3-13-90 from Plan.



CONSTRUCTION RECORD						SERVICE RECORD						
STATION	ELEVATION		Depth	MANHOLE	4-INCH "Y" BRANCHES		No. of Permit		House Number		DATE OF PERMITS	
	Ground	Grade			North West	South East	North West	South East	North West	South East	North West	South East
Priv. San. Sew. for Country Club Park Addn.												
0+00	180.90	168.45	12.5	0+00								
1+00	179.7	168.82	10.9									
2+00	180.0	169.20	10.8									
3+00	180.8	169.57	11.2									
	181.07	169.64 OUT 169.73 IN	11.4	3+18.2	8" stub W 169.71							
4+00	181.7	170.10	11.6									
5+00	183.8	170.55	13.3									
	184.25	170.61 OUT 170.63 IN	13.6	5+13.9								
6+00	184.6	170.96	13.6									
7+00	185.1	171.35	13.8		7+49.7 TAP		24802		1313 N Webb		2-13-90	
8+00	185.4	171.73	13.7									
9+00	185.0	172.12	12.9									
	184.93	172.18	12.8	9+16.7	8" stub NE 172.23							
LAT 26, MAIN L. WESTLINK												
0+00	148.71	138.00	10.7	0+00								
1+00	148.3	138.40	9.9									
2+00	148.7	138.80	9.9									
	149.2	138.85 OUT 138.85 IN	10.4	2+12.0	50R35 2+85.6 TAP		24832		244 Socora		2-20-90	
3+00	148.8	139.20	9.6									
					3+05.5 TAP		24976		240 Socora		2-8-90	
4+00	150.0	139.60	10.4									
5+00	149.8	140.00	9.8									
	150.0	140.15	9.9	5+37.0	5+27.2 TAP		24775		236 Socora		2-8-90	
LAT 93, WESTLINK SEWER												
0+00	143.26	134.31	9.1	0+00	0+41.5 TAP	241107	24865		554 W Peterson	563 Westlink	7-1-97	2-28-90
1+00	145.0	134.71	10.3		1+14.4 TAP	93-827	24864		565 Peterson	601 Westlink	1-21-98	2-28-90
	144.0	135.10 OUT 139.30 IN	8.9	1+97.4	4" SDR35 1+72.4		93-281697		605 Westlink			10-29-93
2+00												
					4" SDR35 2+53.4 TAP		93-191087		9326 Westlink			7-23-93
3+00	143.5	135.71	7.8									
	144.0	135.92	8.1	3+53.4	4" stub SW R 136.25		24620		9330 Hartman			1-12-90
Priv. S.S. Lots 12-14 Fairlawn Acres												
0+00	138.23	134.53	3.7	0+00								
	139.2	134.80	4.4	0+96.9	4" WYE N		25340		8282 Fleming		5-17-90	

560 N Peterson - Church Bldg - Standard, Const. was supposed to Kenock Bldg line for church to new 8" PVC line (It originally tapped into 0+60 mth.) No record of this connection was turned in to City Eng. office and it was not recorded as part of project - BL 1024/97