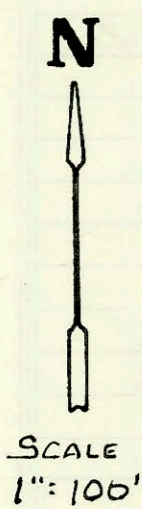


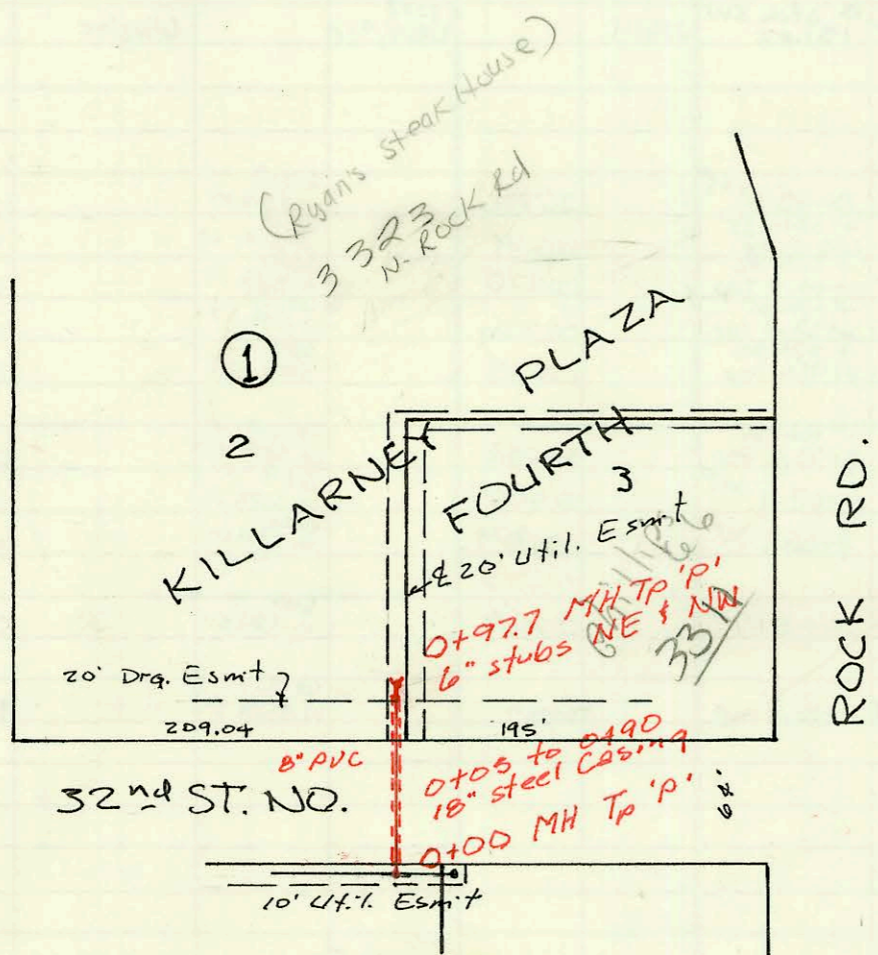
Priv. SAN. SEWER FOR PART OF LOT 1,  
DAVIS-MOORE ADDITION  
240 PPS Built By Utility Cont.  
Booked 6-25-90 from As-Built Plan



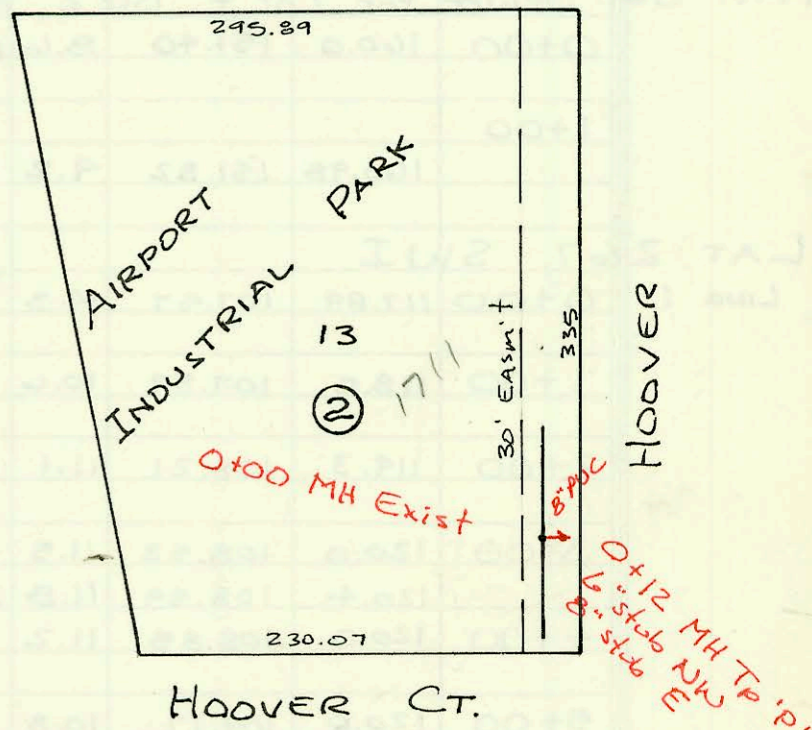
Scale 1"=150'



SCALE 1"=100'

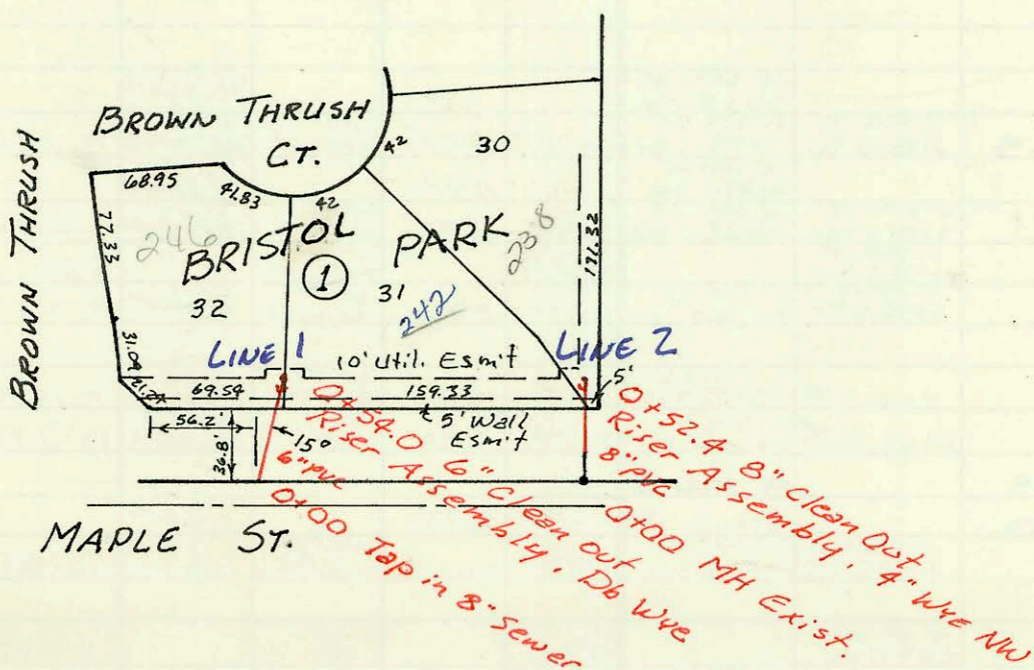


SCALE 1"=100'

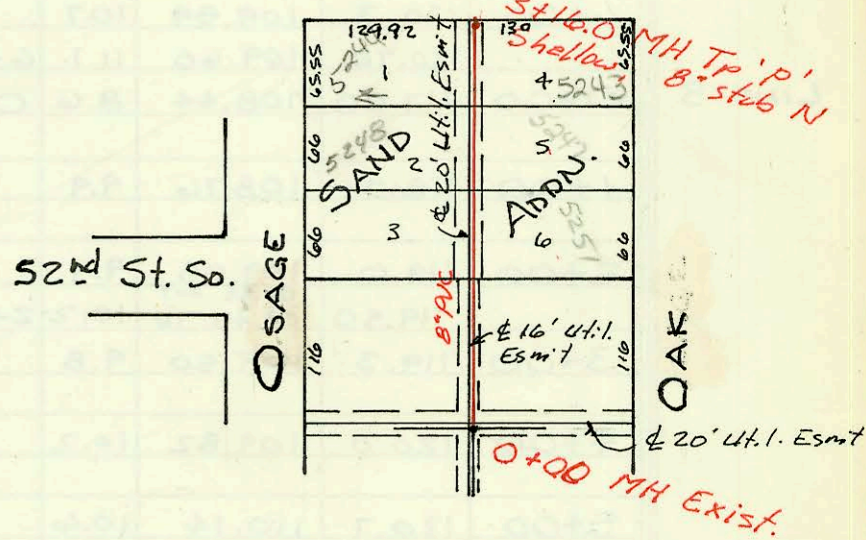


Priv. SAN. SEWER FOR LOT 13, BLK 2  
AIRPORT INDUSTRIAL PARK ADDN.  
250 PPS Built By Dondlinger & Sons  
Booked 6-25-90 From As Built Plan

Priv. SAN. SEWER FOR LOTS 2 & 3  
KILLARNEY PLAZA FOURTH  
241 PPS Built By Stannard Const.  
Booked 6-25-90 from As Built Plan



Scale 1"=100'



LAT 47, MAIN 3, SW INTERCEPTOR  
468-82034 (740316)  
Built By Duling Const.  
Booked 6-28-90 From Plan.

Priv. San. Sewer for Lots 30, 31 & 32  
BLK 1, BRISTOL PARK  
251 PPS McCullough Excavation  
Booked 6-26-90 from As Built Plan



SCALE 1"=150'

