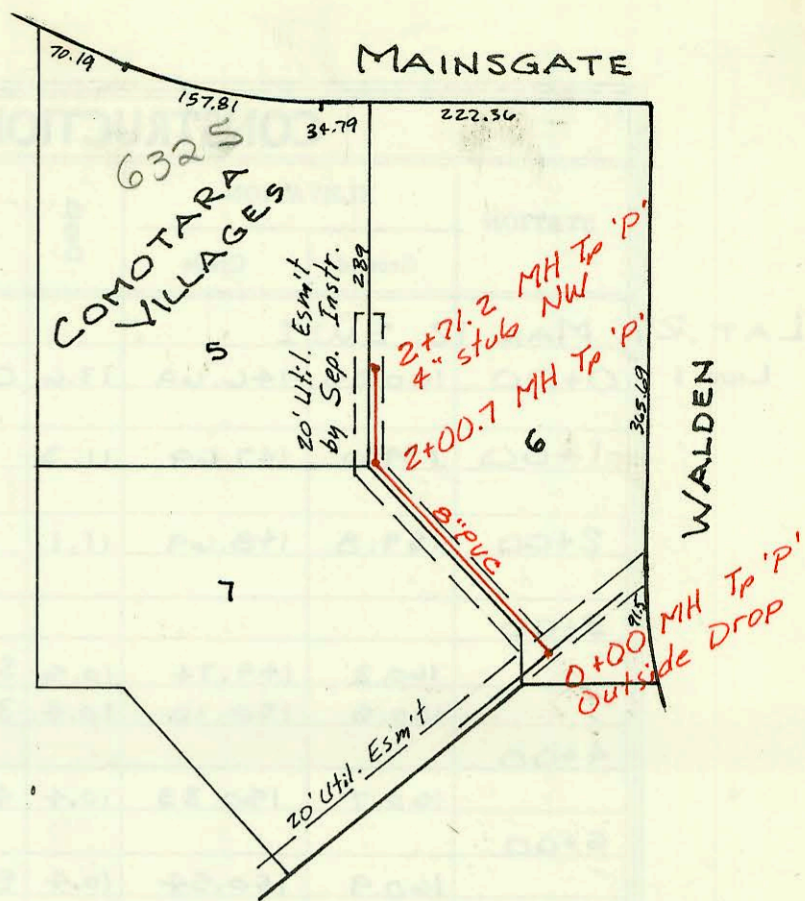


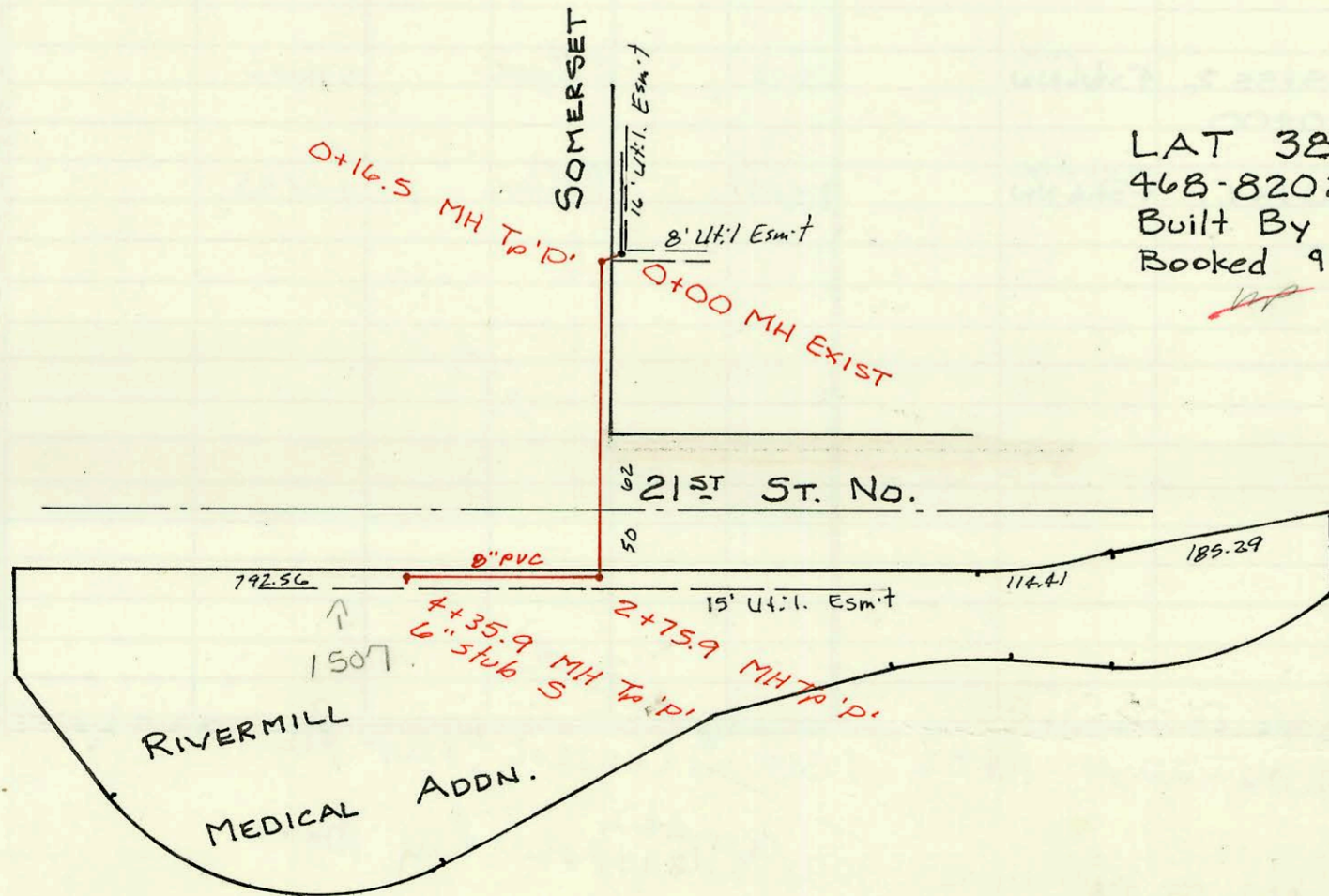
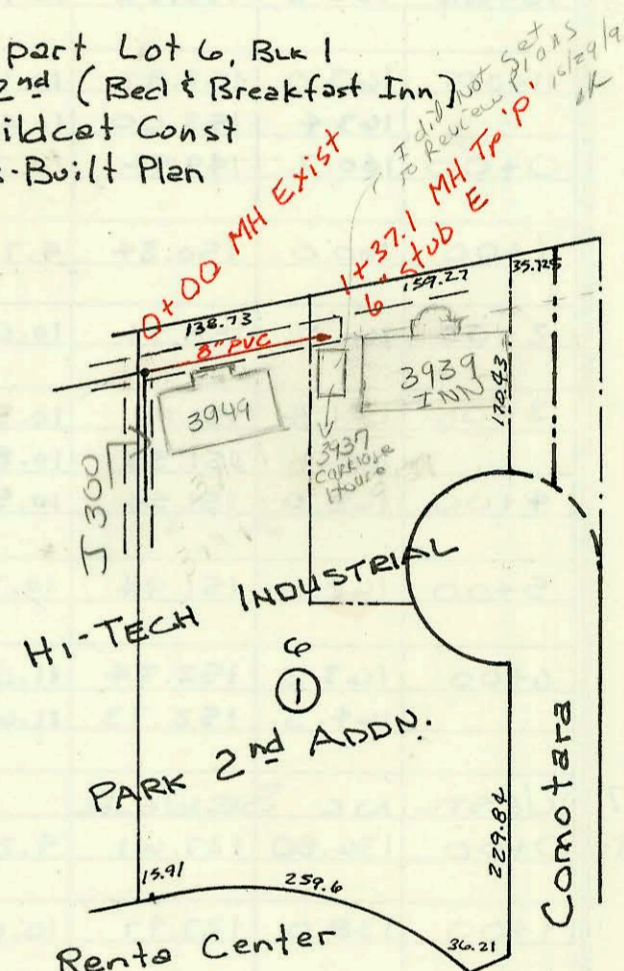
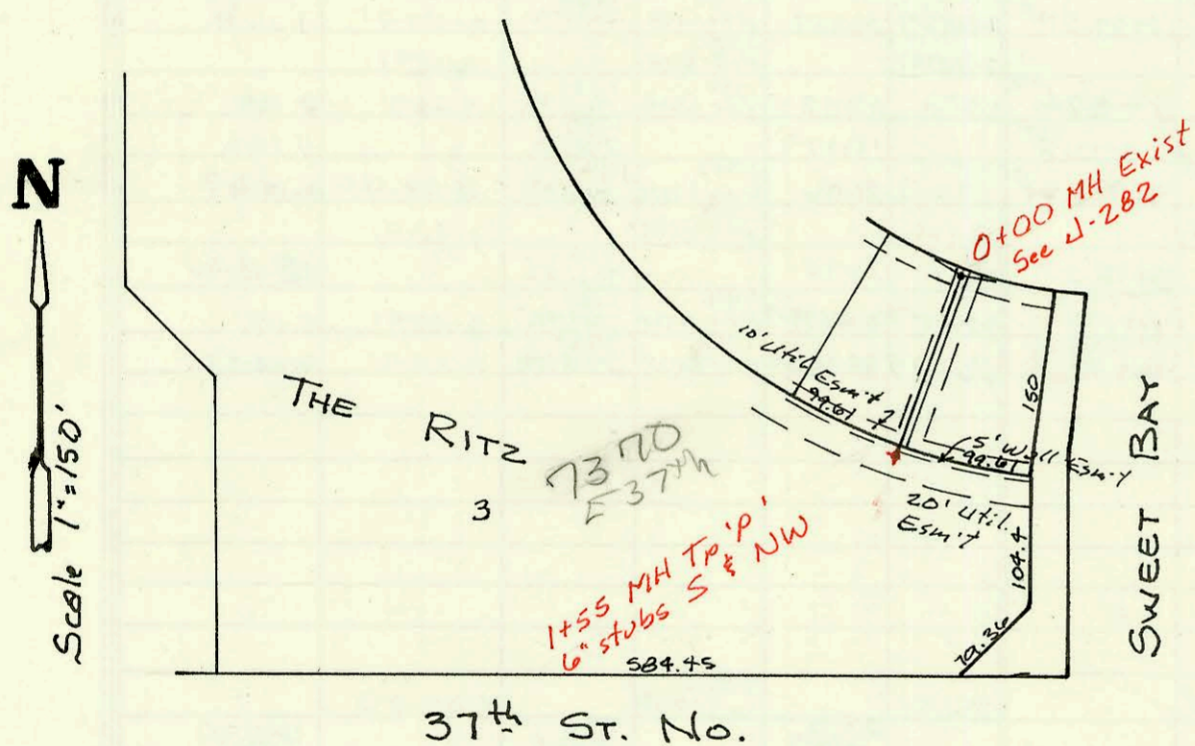
Priv. San. Sewer for Lot 2, Blk 1  
JEFF AND JAY THIRD ADDN.  
245 PPS Built By DONDLINGER & SONS  
Booked 8-27-90 from As Built



Priv. San. Sewer for part of Lot 5  
COMOTARA VILLAGES 230 PPS  
Built By L.A. Knebler Const.  
Booked 8-27-90 from As Built

Priv. San. Sewer for part of  
Lot 3, The Ritz  
256 PPS Built By Stannard Const.  
Booked 8-28-90 from As Built Plan

Priv. San. Sewer for part Lot 6, Blk 1  
Hi-Tech Industrial Park 2nd (Bed & Breakfast Inn)  
253 PPS Built By Wildcat Const  
Booked 8-28-90 from As-Built Plan



LAT 38, DIST. T, S.S. #20  
468-82025 (740449)  
Built By Stannard  
Booked 9-28-90 From DRH-17

CONSTRUCTION RECORD							SERVICE RECORD					
STATION	ELEVATION		Depth	MANHOLE	4-INCH "Y" BRANCHES		No. of Permit		House Number		DATE OF PERMITS	
	Ground	Grade			North West	South East	North West	South East	North West	South East	North West	South East
Priv. San.	Sewer Lot 2, Blk 1, Jeff & Jay 3 <sup>rd</sup> Addn.											
0+00	195.50	188.25	7.3	EXIST 0+00								
1+00	197.0	188.58	8.4									
	198.04	188.84	9.2	1+79.6	190.54 OK 4" stub N		25952		1717 E 29th W		7-17-90	
Priv. San.	Sewer for part Lot 5, COMOTARA VILLAGES											
0+00	193.14	187.13	6.0	0+00								
1+00	193.0	187.61	5.4									
2+00	193.09	188.10 OUT 188.11 IN	5.0	2+00.7								
	194.42	188.92	5.5	2+71.2	189.29 OK 4" stub NW		25942		6825 Main St		7-16-90	
Priv. San.	Sewer part Lot 6, Blk 1, Hi-Tech Industrial Park 2 <sup>nd</sup>											
0+00	210.62	199.69	10.9	0+00								
1+00	209.5	200.00	9.5					9823747	3937 COMOTARA		12-9-91	
	209.36	200.11	9.3	1+37.1	200.25 OK 6" stub E		25957		3937 COMOTARA		8-15-90	
Priv. San.	Sewer for part Lot 3, The Ritz											
0+00	192.59	181.83	10.8	EXIST 0+00								
1+00	191.5	182.36	9.1									
	191.26	182.56	8.7	1+55	182.91 6" stub NW	182.01 6" stub S	25927		17870 E 37th		8-9-90	
LAT 38	DIST T, S.S. # 20											
0+00	124.00	116.25	7.8	0+00								
	123.85	116.32 OUT 116.42 IN	7.5	0+16.5								
1+00	124.2	116.75	7.5									
2+00	124.3	117.15	7.2									
	124.85	117.46 OUT 117.76 IN	7.4	2+75.9								
3+00	124.8	117.85	7.0									
4+00	125.0	118.25	6.8									
	124.90	118.40	6.5	4+35.9	6" stub S		26253		1507 W 21st		10-2-90	