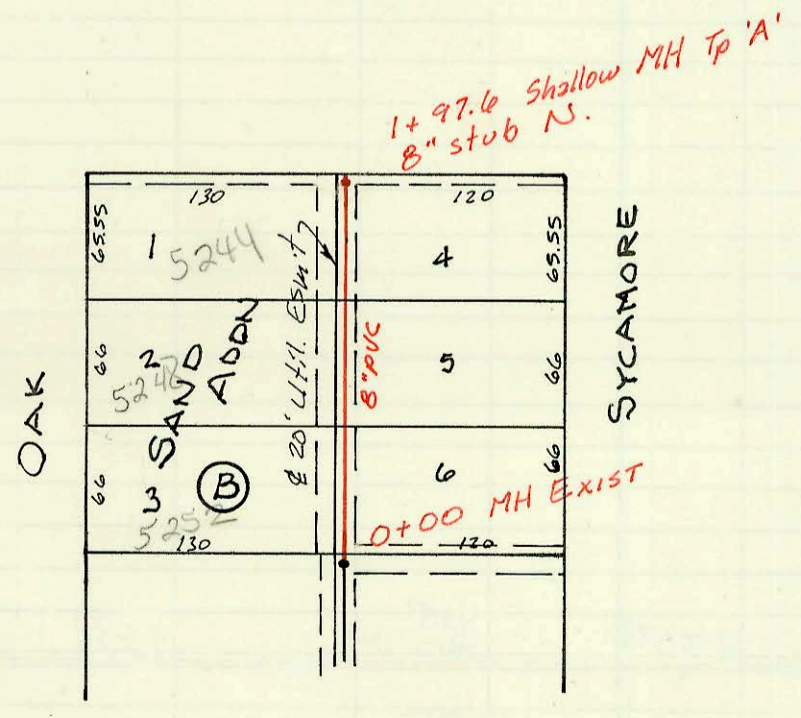


LAT 54, MAIN 5, S.S. # 23
 468-81978 (740522)
 Built By Stanner Const.
 Booked 10-30-90- from Plan



Scale 1"=100'



CONSTRUCTION RECORD

SERVICE RECORD

STATION	ELEVATION		Depth	MANHOLE	4-INCH "Y" BRANCHES		No. of Permit		House Number		DATE OF PERMITS	
	Ground	Grade			North West	South East	North West	South East	North West	South East	North West	South East
LAT 54 LINE 1 0+00	176.70	166.37	10.3	0+00								
1+00	178.0	167.37	10.6		4" PVC 40 1+15.0 tap	4" PVC 40 1+15.0 tap	27297		2545 Parkwood		3-18-91	
2+00	179.3	168.37	10.9		4" PVC 40 2+09.5 tap	4" PVC 40 2+08.0 tap	22-4479-7	23293-7	2518 Old Manor	2541 Parkwood	3-31-92	6-3-91
3+00	181.0	169.37	11.6		4" PVC 40 3+08.5 tap	4" PVC 40 3+07.5 tap	22-23863-7	19923-7	2514 Old Manor	2537 Parkwood	8-25-92	3-27-91
4+00	183.0	170.37	12.6		4" PVC 40 4+00.5 tap	4" PVC 40 3+39.5 tap	22-6925-7	1975	2510 Old Manor	2533 Parkwood	4-17-92	1-31-92
5+00	184.5	171.47	13.0	4+58.5	4" PVC 40 4+94.5 tap	4" PVC 40 3+39.5 tap	22-6923-7	1978	2502 Old Manor	2529 Parkwood	5-12-92	1-31-92
6+00	185.5	174.47	11.0	5+56.8	4" PVC 40 5+96.3 tap	4" PVC 40 3+39.5 tap	22-6627-7	1976	2430 Old Manor	2525 Parkwood	3-25-93	1-31-92
7+00	187.7	175.47	12.2				22-18293-7		2410 Old Manor		7-31-92	
8+00	190.0	176.47	13.5									
9+00	191.5	177.38	14.1	8+61.7	4" PVC 40 9+11.1 tap	4" PVC 40 179.50 tap	93-30056-7		5301 Arlene	5302 Looman	1-4-94	11-29-93
LINE 2 0+00	191.70	177.65	14.1	0+00	4" PVC 40 55.0 tap	4" PVC 40 179.50 tap	94-250-7		5214 Looman	5210 Looman	7-22-93	
LINE 3 0+00	191.50	177.19	14.3	0+00	4" PVC 40 8.5 tap	4" PVC 40 179.50 tap	93-19547-7		5210 Looman	5210 Looman	11-29-93	
1+00	191.0	177.69	13.3		4" PVC 40 1+07 tap	4" PVC 40 179.50 tap	93-15935-7		2418 Old Manor	5306 Looman	6-14-93	1-4-94
2+00	192.0	178.19	13.8		4" PVC 40 2+17.5 tap	4" PVC 40 179.50 tap	93-15933-7		5309 Arlene	5310 Looman	7-7-93	16-2-92
3+00	193.5	178.69	14.8		4" PVC 40 3+17.5 tap	4" PVC 40 179.50 tap	93-15937-7		5313 Arlene	5314 Looman	6-14-93	4-16-91
4+00	193.30	179.12	14.2	3+85.8	4" PVC 40 4+17.5 tap	4" PVC 40 179.50 tap	93-15939-7		5311 Arlene	5318 Looman	6-14-93	4-16-91
LINE 4 0+00	188.27	178.82	9.5	0+00	4" PVC 40 179.50 tap	4" PVC 40 179.50 tap	94-18216-7		5401 Arlene	5402 Looman	7-31-92	9-6-91
1+00	188.0	179.45	8.6				94-2445-7		5409 Arlene	5400 Looman	3-3-94	
2+00	188.8	180.17	8.6		4" PVC 40 0+59.0 tap		92-2229-7		5505 F. Church			3-20-92
3+00	190.3	180.87	9.4									
4+00	191.5	181.77	9.7	3+24.4			20704-7		5413 Looman		4-9-91	3-27-91
5+00	192.8	182.67	10.1	4+31.9	4" PVC 40 4+91.9 tap		2060		5409 Looman			2-10-92
6+00	194.1	183.57	10.5	5+35.3	4" PVC 40 5+30.3 tap		92-2325-7		5405 Looman			3-3-92
7+00	195.8	184.37	11.4	7+65.5	4" PVC 40 6+62.5 tap		71-39461-7		5401 Looman			12-24-91
LINE 5 0+00	188.80	180.02	8.8	0+00	4" PVC 40 0+11.0 tap		71-38497-7		5317 Looman	5313 Arlene		12-3-91
1+00	189.7	180.52	9.2	1+50.0	4" PVC 40 1+03.0 tap		91-33657-7		5304 Looman	2409 Bedcon Hill		9-17-91
LINE 6 0+00	185.20	172.14	13.1	0+00	4" PVC 40 0+60.0 tap		91-36576-7		2405 Bedcon Hill	2401 Bedcon Hill		11-01-91
1+00	184.4	173.14	11.3		4" PVC 40 1+41.0 tap		91-33615-7		5413 Looman	2405 Bedcon Hill		9-25-91
2+00	186.7	174.14	12.6		4" PVC 40 2+00.0 tap		20103	91-33614-7	5413 Looman	2401 Bedcon Hill	4-10-91	9-25-91
3+00	188.9	175.14	13.8		4" PVC 40 3+29.8 tap		93-28144-7		2521 Parkwood	5306 Arlene	3-3-92	10-26-93
4+00	190.30	176.00	14.3	3+85.8	4" PVC 40 4+11.0 tap		93-12702-7		5310 Arlene			5-24-93
5+00	191.0	177.14	13.9		4" PVC 40 5+10.0 tap		93-19547-7		2514 Parkwood	5314 Arlene	3-30-92	7-22-93
6+00	192.0	178.14	13.8		4" PVC 40 6+10.0 tap		93-19547-7		2510 Parkwood	5318 Arlene	6-3-91	12-21-92
7+00	193.0	179.14	13.9		4" PVC 40 7+10.0 tap		91-38418-7	92-23262-7	2504 Parkwood	5412 Arlene	12-3-91	8-25-92
8+00	194.0	180.14	14.0		4" PVC 40 8+10.0 tap		91-37281-7	92-8319-7	2505 Parkwood	5406 Arlene	10-3-91	6-8-92
9+00	195.0	181.14	14.1		4" PVC 40 9+10.0 tap		27276	93-15947-7	2501 Parkwood	5410 Arlene	3-18-91	6-16-93
LAT 4 0+00	83.5	78.19	5.3	0+00								
1+00	83.4	78.49	4.9		0+58.0 tap		26268		5382 Oak			10-22-90
2+00	84.0	78.78	5.2	1+97.6	4" PVC 40 1+88.1 tap		93-12934-7		5248 Oak			5-24-93
S.S. MAN FOR BEL ALIVE betw. Woodlawn & Rock (CONT.) LINE 2 0+00	186.62	177.86	8.8	0+00	4" PVC 40 0+80.0 tap		26578		5244 Oak			11-20-90
1+00	186.2	178.33	7.9		4" PVC 40 1+73.6 tap		3089		6829 Percyton			1-24-97
2+00	185.1	178.73	7.0		4" PVC 40 2+11.6 tap		3040		6817 Percyton			9-16-96
3+00	186.53	178.81	7.7	2+19.6								

Form #192-020 (July, 1981)

91-33065-7-5313 E. Looman (Inspector did not approve this sewer because of 2.1 used 4-45° bends)

91-23293-7 2541 N. Parkwood 6-3-91 (4" PVC 40 4" Drainslayer tap 31' south of NPL) C Repair 10' section 6' from main)

92-27447-7 96/92 5406 Looman-McCullough