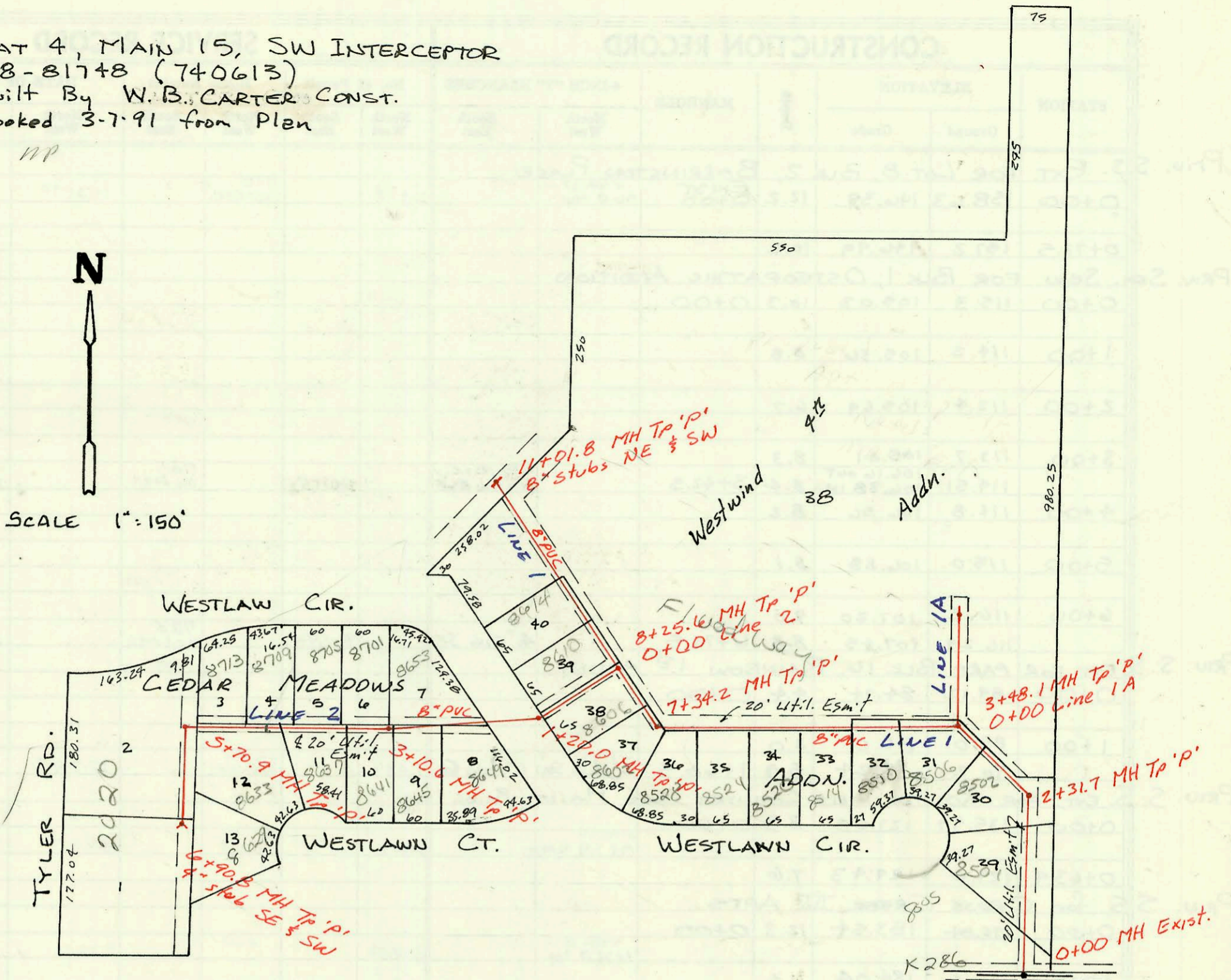
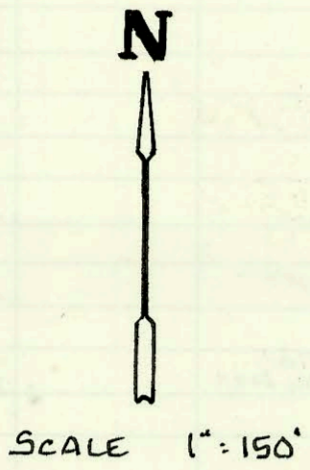
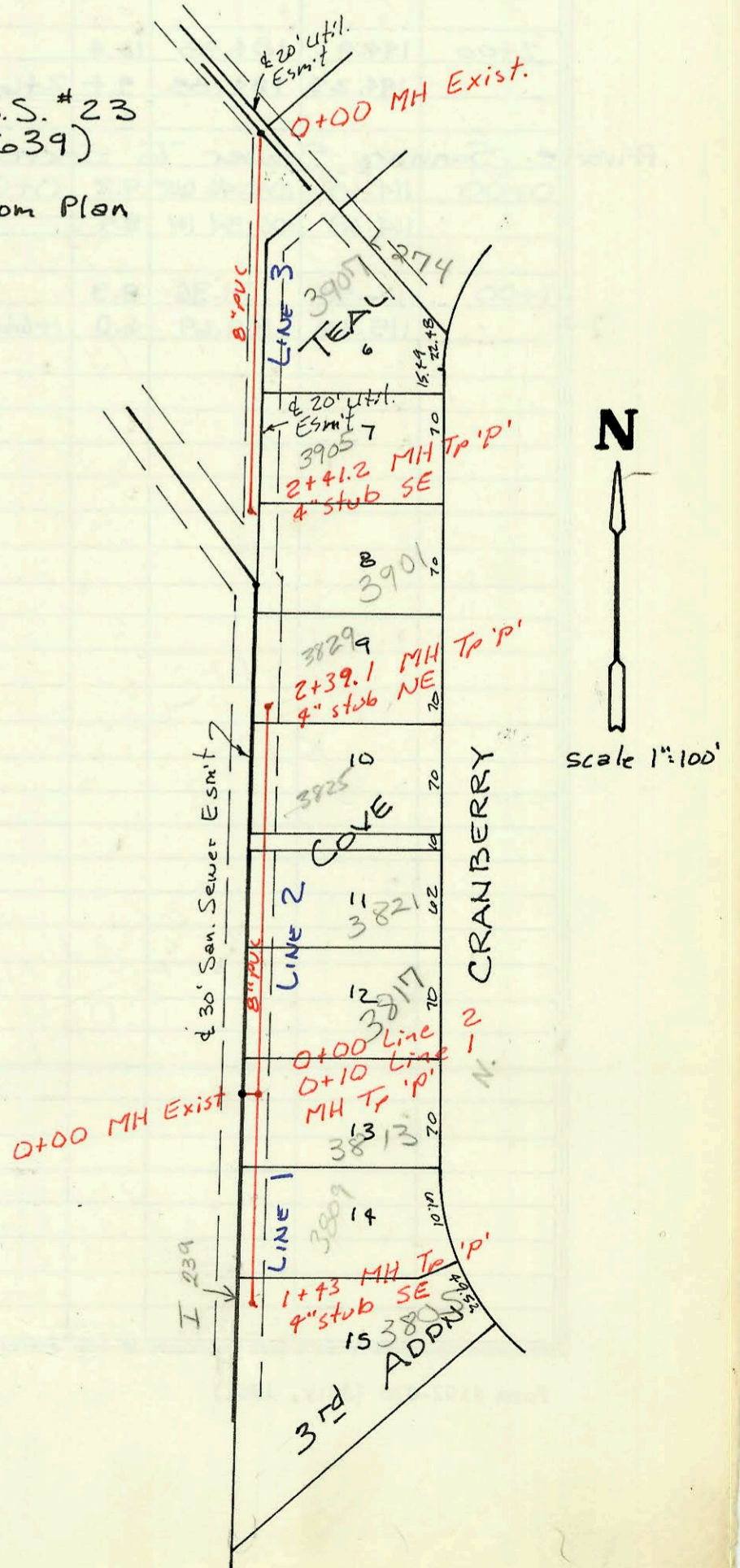


LAT 4, MAIN 15, SW INTERCEPTOR
468-81748 (740613)
Built By W.B. CARTER CONST.
Booked 3-7-91 from Plan

11P



LAT 39, MAIN 9, S.S. #23
468-81974 (740639)
Utility Contr.
Booked 3-18-91 from Plan



CONSTRUCTION RECORD							SERVICE RECORD					
STATION	ELEVATION		Depth	MANHOLE	4-INCH "Y" BRANCHES		No. of Permit		House Number		DATE OF PERMITS	
	Ground	Grade			North West	South East	North West	South East	North West	South East	North West	South East
LAT 4, LINE 1	MAIN 15, SW I											
0+00	162.5	151.69	10.8	0+00								
1+00	163.3	152.53	10.8		4" SDR 35 1+88.7 tap		24941-7		8501 Westlawn		6-21-91	
2+00	163.8	153.36	10.4		2+46.7 tap		21576-7		8502 Westlawn		5-1-91	
	163.8	153.63 OUT 153.73 IN	10.2	2+31.7	4" SDR 35 3+80.1 tap		9238152-7		8506 Westlawn		11-25-91	
3+00	163.9	154.00	9.9		4" SDR 35 4+75.2 tap		929059-7		8510 Westlawn		6-18-92	
	163.8	154.20 OUT 154.30 IN	9.6	0+00 L-1A 3+48.1								
4+00	163.9	154.51	9.4		4" SDR 35 5+46.2 tap		71-29310-7		8514 Westlawn		8-15-91	
5+00	163.9	154.91	9.0		4" SDR 35 5+70.2 tap		923425-7		8520 Westlawn		3-18-92	
6+00	163.9	155.31	8.6		4" SDR 35 6+68.2 tap		26372-7		8524 Westlawn		7-2-91	
7+00	164.5	155.71	8.8		4" SDR 35 7+47.8 tap		79-28478-7		8602 Westlawn		8-19-92	
	164.6	155.85 OUT 155.95 IN	8.8	7+34.2	4" SDR 35 7+19.2 tap		1810		8528 Westlawn		1-2-92	
8+00	165.2	156.21	9.0		4" SDR 35 7+87.2 tap		92908-7		8605 Westlawn		8-18-92	
	165.4	156.32 OUT 156.32 IN	9.1	0+00 L-2 8+25.6	4" SDR 35 8+67.2 tap		27144-7		8610 Westlawn		2/15/91	
9+00	166.2	156.62	9.6		9+47.8		20778-7		8614 Westlawn		4-19-91	
10+00	167.5	157.02	10.5									
11+00												
LAT 4, LINE 1A	168.5	157.60	10.9	11+01.8	8" stub NE	8" stub SW						
0+00	163.8	154.30	9.5	0+00								
1+00		154.70										
LAT 4, LINE 2	163.8	154.86	8.9	1+40.0	8" stub N							
0+00	165.4	156.52	8.9	0+00								
1+00	167.0	156.92	10.1									
	167.3	157.00 OUT 159.00 IN	10.3	1+20								
2+00	168.0	159.36	8.6		4" SDR 35 2+22.6 tap		91-29705-7		8649 Westlawn		8-13-91	
3+00	169.2	159.80	9.4		4" SDR 35 3+01.6 tap	4" SDR 35 3+93.6 tap	22806-7	21839-7	8653 Westlawn	8645 Westlawn	5-28-91	5-10-91
	169.4	159.86	9.5	3+10.1	4" SDR 35 3+38.6 tap	4" SDR 35 3+29.6 tap	29707-7	26996-7	8701 Westlawn	8641 Westlawn	8-13-91	2-5-91
4+00	170.0	160.22	9.8		4" SDR 35 4+09.6 tap	4" SDR 35 3+95.6 tap	26994-7	26995-7	8705 Westlawn	8637 Westlawn	2-5-91	2-5-91
					4" SDR 35 4+64.9 tap		26993-7		8709 Westlawn		2-5-91	
5+00	170.7	160.62	10.1		4" SDR 35 5+28.9 tap	4" SDR 35 5+09.9 tap	26992-7	91-38516-7	8713 Westlawn	8633 Westlawn	2-5-91	10-17-91
	171.85	160.90 OUT 161.00 IN	11.0	5+70.9	4" SDR 35 5+75.9 tap		75-6792-7		2020 TYLER PL		5-9-95	
6+00	171.2	161.12	10.1									
	171.90	161.50	10.4	6+90.8	4" stub SW	4" stub SE	91-36049-7		8624 Westlawn		5-7-91	10-23-91
LAT 3, LINE 1	MAIN 9, S.S. #23											
0+00	177.9	161.00	16.9	EXIST. 0+00								
	176.3	161.20 IN 165.00 IN	15.1	0+10.0								
1+00	176.0	167.00	9.0		4" sch 40 0+20.7 tap		91-31681-7		3813 Cranberry		9-5-91	
	176.5	167.66	8.8	1+43.0	4" sch 40 PVC 93.0 tap		91-36575-7		3809 Cranberry		11-7-91	
LAT 3, LINE 2	176.3	165.00	11.3	0+00	4" sch 40 4" stub SE		91-31682-7		3805 Cranberry		9-5-91	
0+00	176.3	165.00	11.3	0+00	4" SDR 35 50.0 tap		1911		3817 Cranberry		1-22-92	
1+00	176.0	167.00	9.0									
					4" PVC 40 1+92.1 tap		71-21911-7		3825 Cranberry		5-10-91	
2+00	176.1	169.00	7.1									
	176.5	169.78	6.7	2+39.1	4" PVC 40 4" stub NE		71-21912-7		3829 Cranberry		5-10-91	
LAT 3, LINE 3	176.7	167.25	9.5	0+00								
0+00	176.7	167.25	9.5	0+00	4" PVC 40 0+61.0 tap		92-4475-7		3907 Cranberry		2-31-92	
1+00	176.9	168.00	8.9									
					4" sch 40 PVC 2+35.2 tap		25922-7		3905 Cranberry		6-25-91	
2+00	177.0	168.60	8.4									
	177.5	168.85	8.7	2+41.2	4" PVC 40 4" stub SE		00752		3901 Cranberry		7-29-91	