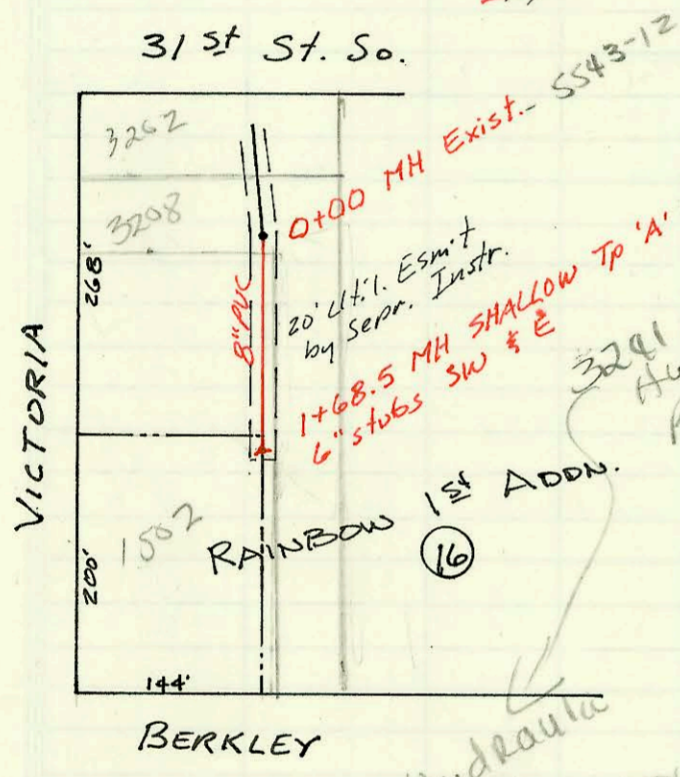


PRIV. SAN. SEW. EXT TO SERVE
 Lot 8, BLK 2, BARRINGTON PLACE
 264 PPS Built By McCullough Exc.
 Booked 4-10-91 from As Built

PRIV. SAN. SEW. TO SERVE BLK 1
 OSTEOPATHIC ADDITION
 265 PPS Built By COONROD & Assoc.
 Booked 4-11-91 from As Built

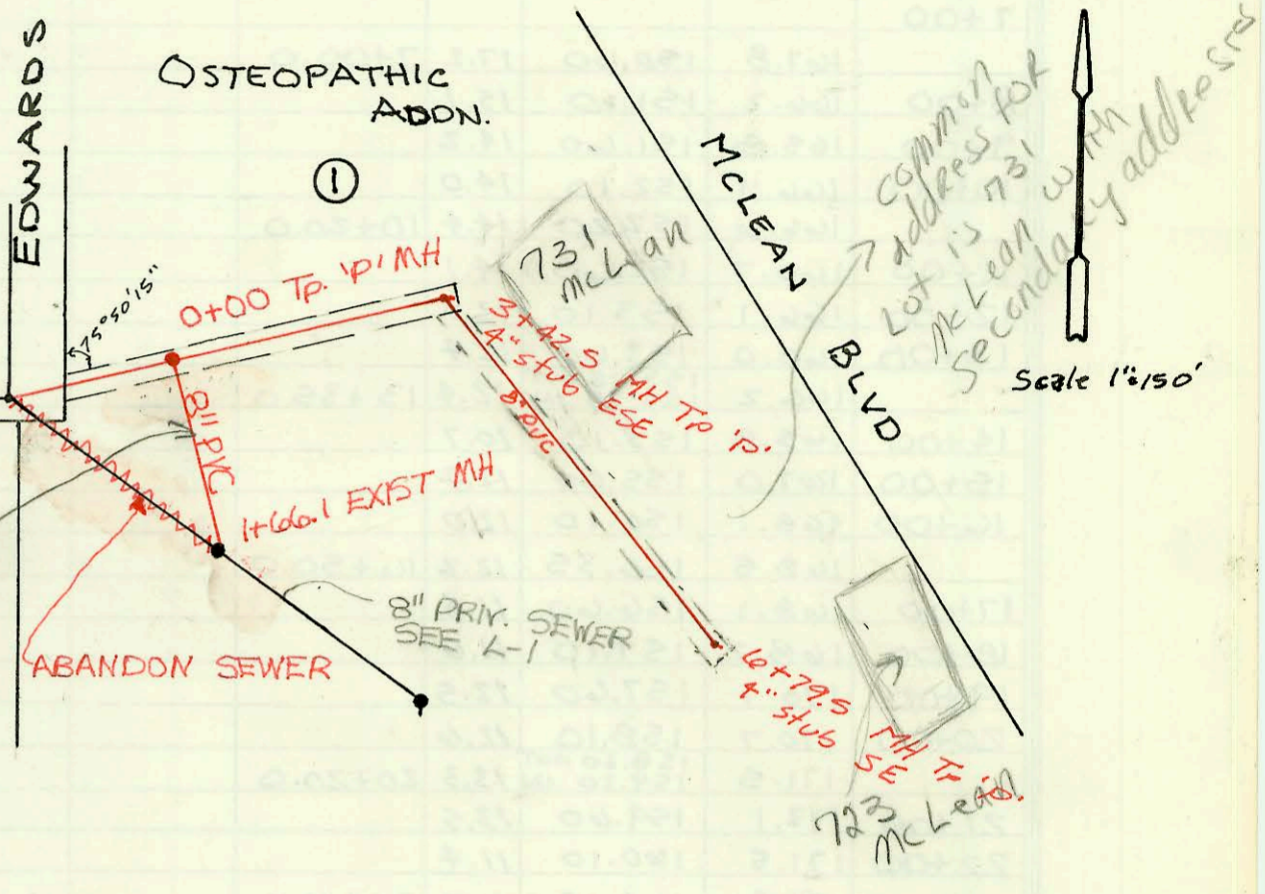
PRIVATE SANITARY SEWER TO SERVE
 RIVERSIDE HEALTH SYSTEM
 PRIV. PROJ. NO. 554 PPS (607861)
 BUILT BY COMMERCIAL MECHANICAL, INC.
 BOOKED 11-30-95 FROM AS BUILTS

PRIV. SAN. SEW. FOR PART LOT 16
 RAINBOW 1st ADDITION
 262 PPS Built By Builders Const. Co.
 Booked 4-11-91 from As Built

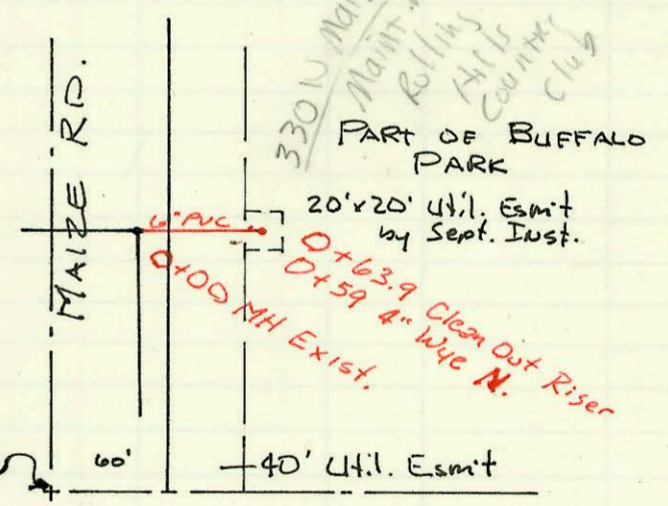


This Line is privately owned & maintained

scale 1"=150'



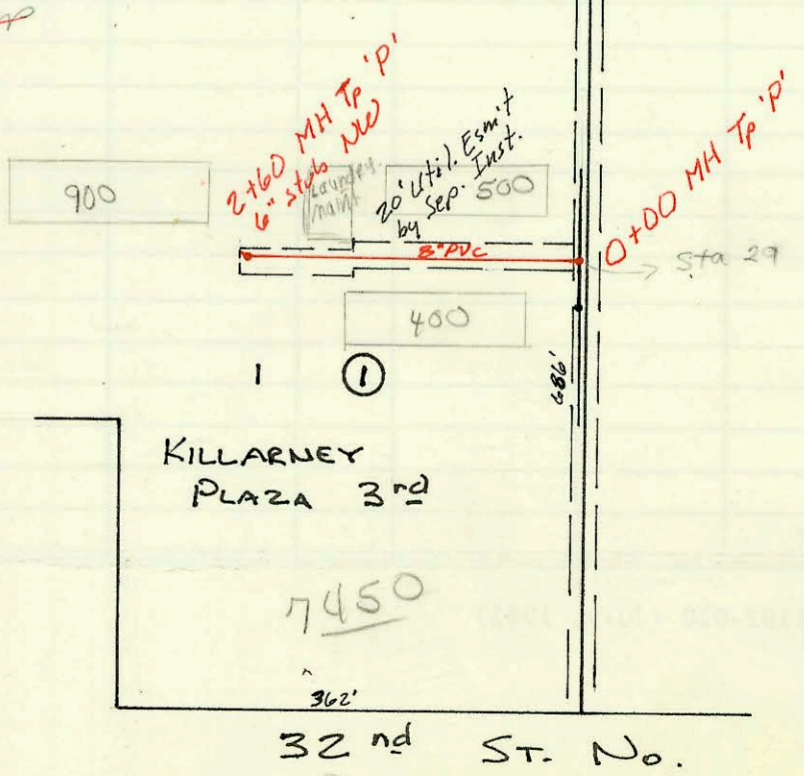
PRIV. SAN. SEW. FOR ROLLING HILLS
 COUNTRY CLUB MAINTENANCE BLDG.
 260 PPS Built By McCullough Exc.
 Booked 4-11-91 from As Built



scale 1"=100'

32415 Hydraulic
 Sewer Main crew
 determined on 6/1/01
 that 3241 = Hydraulic
 has two taps - one to
 MH 5543-125 and one
 to MH 5543-126. see
 att'd F-1011 from Calvin Fugitt
 BK

PRIV. SAN. SEW. FOR
 CROSSCREEK IV APARTMENTS
 268 PPS Built By Nowak Const.
 Booked 4-12-91 from As Built



scale 1"=150'

CONSTRUCTION RECORD						SERVICE RECORD						
STATION	ELEVATION		Depth	MANHOLE	4-INCH "Y" BRANCHES		No. of Permit		House Number		DATE OF PERMITS	
	Ground	Grade			North West	South East	North West	South East	North West	South East	North West	South East
Priv. S.S. EXT. FOR LOT 8, BLK 2, BARRINGTON PLACE												
0+00	158.63	146.39	12.2	EXIST 0+00	4" SOR 35 56.0 tap		26438		7715 VOSTRUM		10-31-90	
0+72.5	157.2	146.99	10.2									
Priv. San. Sew. FOR BLK 1, OSTEOPATHIC ADDITION												
0+00	115.3	105.03	10.3	0+00								
1+00	114.2	105.36	8.8									
2+00	112.4	105.69	6.7									
3+00	113.7	105.41	8.3									
	114.51	106.16 OUT 106.38 IN	8.4	3+42.5	4" sch 40 pipe 4" stub ESE		29115		723 McLean		2-25-91	
4+00	114.8	106.56	8.2									
5+00	115.0	106.88	8.1									
6+00	116.2	107.20	9.0									
	116.29	107.45	8.8	6+79.5	4" stub SE		94-17457		723 McLean		10-28-94	
Priv. S.S. EXT FOR PART BLK 16, RAINBOW 1 st ADDN.												
0+00	89.12	84.74	4.4	0+00								
1+00	89.0	85.0	4.0									
	90.2	85.24	5.0	1+62.5	4" SOR 35 6" stub SW 6" stub E		26694		1552 BARKLEY		12-7-90	
Priv. S.S. EXT FOR ROWING HILLS COUNTRY CLUB MAINT. BLDG												
0+00	135.97	127.68	8.3	0+00								
					4" sch 40 0+59 wye		25971		380 S. MAYE		11-8-90	
0+63.9	137.0	129.43	7.6									
Priv. S.S. for CROSS CREEK III APTS.												
0+00	195.84	183.54	12.3	0+00								
					4" SOR 35 1+61.0 tap		26639		#500		11-29-91	
1+00	195.4	184.04	11.4									
					4" SOR 35 1+63.0 tap		26640		main #17		11-29-90	
2+00	194.9	184.55	10.4									
	194.25	184.85	9.4	2+60	4" SOR 35 6" stub NW		26641		#400		11-29-90	
Private Sanitary Sewer To Serve Riverside Health Systems												
0+00	114.69	105.46 OUT	9.2	0+00								
	114.69	106.34 IN	8.4									
1+00	116.70	108.36	8.3									
	115.68	109.69	6.0	1+66.1								