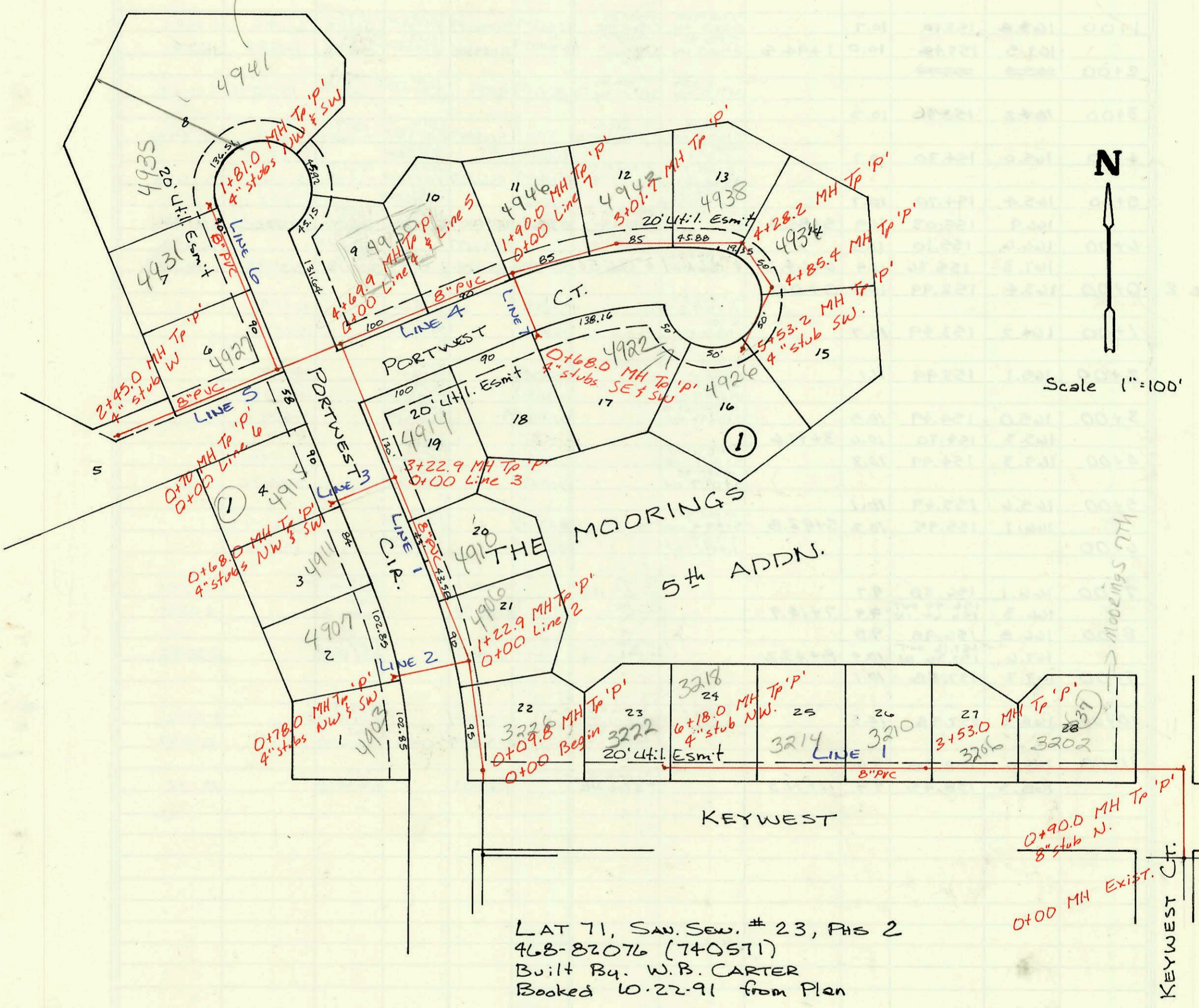


LAT 71, SAN. SEWER # 23  
468-82076 (740571)  
Built By NOWAK CONST.  
Booked 7-29-91 from Plan.

require Main  
EXT. TO SEE  
THIS PORTION  
of Lot  
8100195



LAT 71, SAN. SEW. # 23, PHS 2  
468-82076 (740571)  
Built By W.B. CARTER  
Booked 10-22-91 from Plan

KEYWEST CT.  
0+90.0 MH Tp 'P'  
8" stub N.  
0+00 MH EXIST.

CONSTRUCTION RECORD							SERVICE RECORD					
STATION	ELEVATION		Depth	MANHOLE	4-INCH "Y" BRANCHES		No. of Permit		House Number		DATE OF PERMITS	
	Ground	Grade			North West	South East	North West	South East	North West	South East	North West	South East
LAT 71 LINE 1	S.S. # 23											
0+00	145.20	134.71	10.5	0+09.8	4" SDR 35 0+49.8		94-1959-7		3226 Keywest			7-20-94
1+00	145.0	135.01	10.0									
	145.5	135.08 out 135.18 in	10.4	1+22.9	4" SDR 35 1+32.9		95-9851-7		4906 Portwest Ct			6-30-95
2+00	145.0	135.41	9.6		4" SDR 35 2+07.5		93-17508-7		4910 Portwest Ct			7-1-93
3+00	144.6	135.71	8.9		4" SDR 35 3+46.3		94-12965-7		4914 Portwest Ct			8-5-94
	145.00	135.78	9.2	3+22.9								
4+00	144.3	136.01	8.3									
	144.80	136.22	8.6	4+69.9								
LINE 2	0+00	145.50	135.18	10.3	0+00	4" SDR 35	92-11835-7	95-8957	4907 Portwest Ct	4903 Portwest Ct	7-7-92	1-20-95
		145.40	135.41	10.0	0+78.0	4" stub NW						
LINE 3	0+00	145.00	135.88	9.1	0+00	4" stub NW			4915 Portwest Ct	4911 Portwest Ct	2-18-94	11-8-95
		145.00	136.08	8.9	0+68.0	4" stub SW	94-2646-7	95-18519-7				
LINE 4	0+00	144.80	136.32	8.5	0+00							
	1+00	144.0	136.62	7.4								
		144.0	136.89 out 136.89 in	7.1	1+90.0				4946 Portwest Ct			1-7-97
2+00	143.6	136.92	6.7				97-1987-7					
3+00	143.60	137.23 out 137.33 in	6.4	3+01.7	4" stub 3+10.7		95-8240-7		4942 Portwest Ct		9-16-93	12-3-96
4+00	142.5	137.63	4.9									
		142.90	137.71 out 137.81 in	5.2	4+28.2	4" SDR 35 4+00.3 top	93-11046-7		4934 N Portwest Ct		5-7-93	
		143.00	137.98 out 138.08 in	5.0	4+85.4			97-1928-7	4934 Portwest Ct			10-8-97
5+00	142.2	138.13	4.1									
		142.80	138.28	4.5	5+53.2	4" stub SW		93-11047-7	4926 Portwest Ct			5-7-93
LINE 5	0+00	144.80	136.32	8.5	0+00							
		144.40	136.53	7.9	0+68.0							
1+00	144.0	136.62	7.4									
2+00	143.3	136.92	6.4									
		143.06	137.06	6.0	2+45.0	4" stub W						
LINE 6	0+00	144.40	136.63	7.8	0+00	4" SDR 35 0+65.0	94-12967-7		4927 N Portwest Ct			8-5-94
		144.1	136.93	7.2			97-1987-7		4931 Portwest Ct			11-7-97
1+00	144.00	137.17	6.8	1+81.0	4" stub NW	4" stub SW	95-13544-7		4935 Portwest Ct			8-25-95
LINE 7	0+00	144.00	136.99	7.0	0+00							
		144.00	137.19	6.8	0+68.0	4" stub SW	4" SDR 35 4" stub SE	94-8563-7	4922 N Portwest Ct			5-20-94
LAT 71, LINE 1	S.S. # 23, PHS 2											
0+00	144.23	133.06	11.2	0+00								
		144.0	133.47 out 134.46 in	10.0	0+90	8" stub N						
1+00						4" SDR 35 1+84.6 top	92-2347-7		3202 W Keywest			9-2-93
2+00	144.2	135.02	9.2									
3+00	144.5	135.52	9.0			5" SDR 35 3+25.0 top	93-14629-7		3206 W Keywest			6-9-93
		145.4	135.79	9.6	3+53.0							
4+00	145.0	136.00	9.0			4" SDR 35 4+05.0 top 4" SDR 35 4+57.0 top	93-9543-7		3210 W Keywest			11-14-93
							94-4463-7		3214 Keywest			12-4-92
5+00	145.0	136.45	8.6									
						4" SDR 35 5+93.0	94-3148-7		3218 W Keywest			3-10-94
6+00	145.0	136.90	8.1									
		146.0	136.99	9.0	6+18.0	4" stub NW	96-11233-7		3222 Keywest			7-2-96