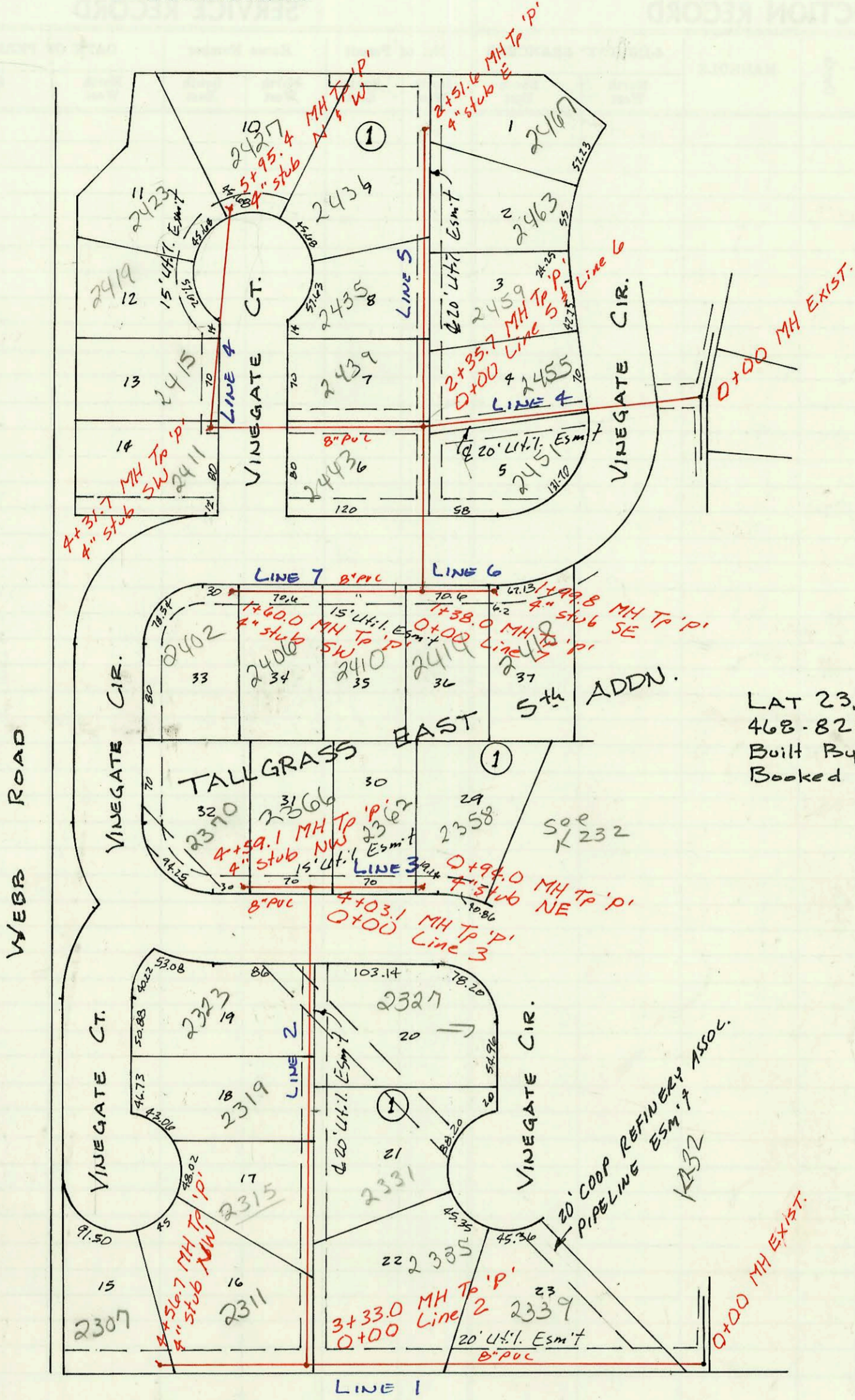
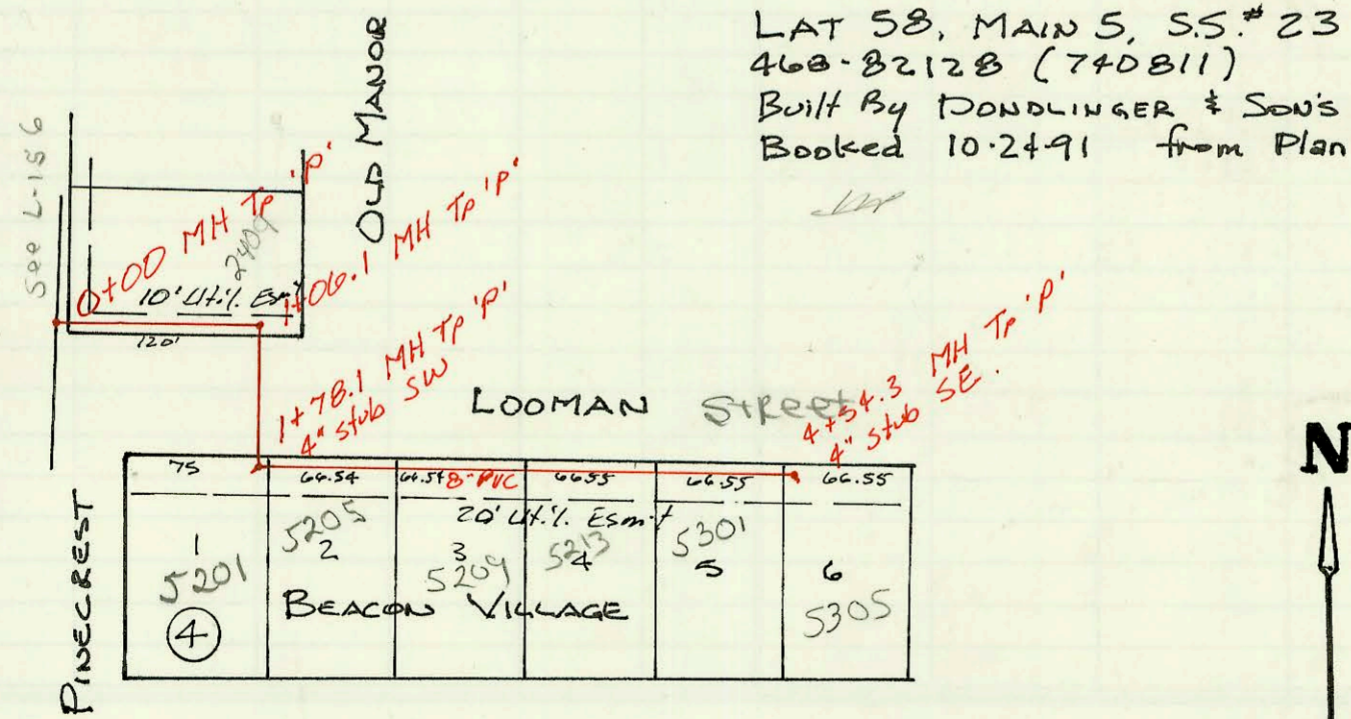


CLUBHOUSE



LAT 23, MAIN 24, W I S.  
 468-82113 (740753)  
 Built By NOWAK CONST.  
 Booked 10-23-91 from Plan



LAT 58, MAIN 5, SS.# 23  
 468-82128 (740811)  
 Built By DONDLINGER & SON'S  
 Booked 10-24-91 from Plan

LAT 23  
LINE 1

LINE 2

LINE 3

LINE 4

LINE 5

LINE 6

LINE 7

LAT 58,

CONSTRUCTION RECORD						SERVICE RECORD						
STATION	ELEVATION		Depth	MANHOLE	4-INCH "Y" BRANCHES		No. of Permit		House Number		DATE OF PERMITS	
	Ground	Grade			North West	South East	North West	South East	North West	South East	North West	South East
MAIN 24, W15												
0+00	211.74	199.19	12.6	0+00								
1+00	212.1	200.29	11.8		4" SDR 35 1+77.0 tap		92-19845-7		2339 Vinegate		8-7-92	
2+00	211.4	201.39	10.0		4" SDR 35 2+44.0 tap		92-1265-7		2205 Vinegate		6-23-92	
3+00	212.1	202.49	10.7									
	212.9	202.85 OUT 204.85 IN	10.1	0+00 L-2 3+33.0								
4+00	213.0	205.59	7.4		4" SCH 40 PVC 3+78.7 TAP 4" PVC 40 4" stub NW		92-42408-7		2311 N. Vinegate Ct		11-13-92	
	213.7	206.21	7.5	4+56.7			92-40790-7		2307 Vinegate		11-3-92	
0+00	212.9	203.05	9.9	0+00								
1+00	214.5	204.05	10.5				92-4293-7		2315 Vinegate		3-27-92	
2+00	216.2	205.05	11.2		4" PVC 40 2+11.0 tap	4" PVC 40 tap 20' S. of MPL	92-3567-7	92-9263-7	2319 Vinegate	2331 N. Vinegate Ct	3-12-92	6-9-92
3+00	219.2	206.05	13.2			4" PVC 40 3+22.1 tap		92-23511-7		2327 Vinegate		8-20-92
					4" SDR 35 2+46.1 tap		92-3882-7		2323 Vinegate		2-23-93	
4+00												
	221.1	207.08 OUT 209.08 IN	14.0	0+00 L-3 4+03.1	4" PVC 40 4+02.1 tap		1971		2366 Vinegate		1-31-92	
	222.0	210.20	11.8	4+59.1	4" stub NW		92-4291-7		2370 Vinegate		3-26-92	
0+00	221.1	207.28	13.8	0+00	4" sch 40 0+86.0 tap		91-3688-7		2362 Vinegate		1-5-91	
	219.7	208.81	11.3	0+94.0	4" stub NE		1983		2358 Vinegate		1-31-92	
0+00	217.53	209.08	8.5	0+00								
1+00	218.5	209.58	8.9		4" sch 40 1+57.7 tap	4" sch 40 1+99.7 tap	92-40791-7	91-6345-7	2455 N. Vinegate	2451 Vinegate	11-03-92	4-26-94
2+00	221.7	210.08	11.6									
	223.2	210.26 OUT 212.26 IN	12.9	0+00 L-3 & L-4 2+35.7								
3+00	224.0	213.48	10.5		4" sch 40 PVC 4+38.7 tap		91-3684-7		2415 Vinegate		11-5-91	
4+00	224.7	215.38	9.3									
	225.2	215.64 OUT 215.84 IN	9.6	4+31.7	4" stub SW		91-3683-7		2411 Vinegate			
5+00	226.0	216.79	9.2		4" SDR 35 5+15.7 tap		1931		2419 Vinegate		11-4-91	
	226.9	217.84	9.1	5+95.4	4" PVC 40 4" stub W	4" SDR 35 4" stub N	92-8361-7	92-6856-7	2405 N. Vinegate	2427 Vinegate	6-9-92	5-11-92
0+00	223.2	210.46	12.7	0+00	4" PVC 40 0+20.0 tap		92-4292-7		2439 Vinegate		3-26-92	
1+00	223.4	210.86	12.5		4" SCH 40 PVC 1+06.6 tap		92-4241-7	92-2645-7	2435 Vinegate	2454 Vinegate	11-13-92	9-1-92
2+00	223.3	211.26	12.0		4" SDR 35 2+33.6 tap	4" SDR 35 1+79.6 tap	91-3743-7	92-8546-7	2431 Vinegate	2463 Vinegate	11-4-91	4-14-93
	224.8	211.47	13.3	2+51.6	4" sch 40 PVC 4" stub E		91-3682-7		2469 Vinegate		11-5-91	
0+00	223.2	210.46	12.7	0+00								
					4" PVC 40 1+00.6 tap		92-1942-7		2443 Vinegate		6-14-93	
1+00	221.0	210.86	10.1									
	221.9	211.01 OUT 211.21 IN	10.9	0+00 L-7 1+38.0	4" sch 40 PVC 1+54.6 tap		91-3812-7		2414 Vinegate		11-26-91	
	220.7	211.46	9.2	1+99.8	4" stub SE		91-3730-7		2418 Vinegate		11-13-91	
0+00	221.9	213.01	8.9	0+00	4" SDR 35 0+26.0 tap 4" sch 40 PVC 1+00.1 tap		1932		2470 Vinegate		11-4-91	
							91-3688-7		2400 Vinegate		11-5-91	
1+00	223.4	214.31	9.1									
	224.0	215.09	8.9	1+60.0	4" PVC 40 4" stub SW		92-8442-7		2452 Vinegate		6-9-92	
MAIN 5, S.S. #23												
0+00	189.3	178.61	10.7	0+00			93-6628-7		2409 Looman		3-25-93	
1+00												
	190.9	179.67 OUT 179.77 IN	11.2	1+06.1								
	190.9	180.49 OUT 180.59 IN	10.4	1+78.1								
2+00					sch 40 PVC 2+02.1 saddle tap 4" PVC 40 2+69.1 tap		93-2788-7		520 E Looman		10-26-93	
							93-3005-7		5205 Looman		11-29-93	
							93-2132-7		5209 Looman		8-9-93	
3+00	191.9	181.80	10.1									
4+00	192.6	182.81	9.8		Sch 40 PVC 2+168.7 4" sch 40 PVC 4" stub SE		94-326-7		5213 Looman		1-4-94	
	194.0	183.35	10.7	4+54.3			93-3087-7		5301 Looman		11-29-93	
							93-1938-7		5305 Looman		7-22-93	