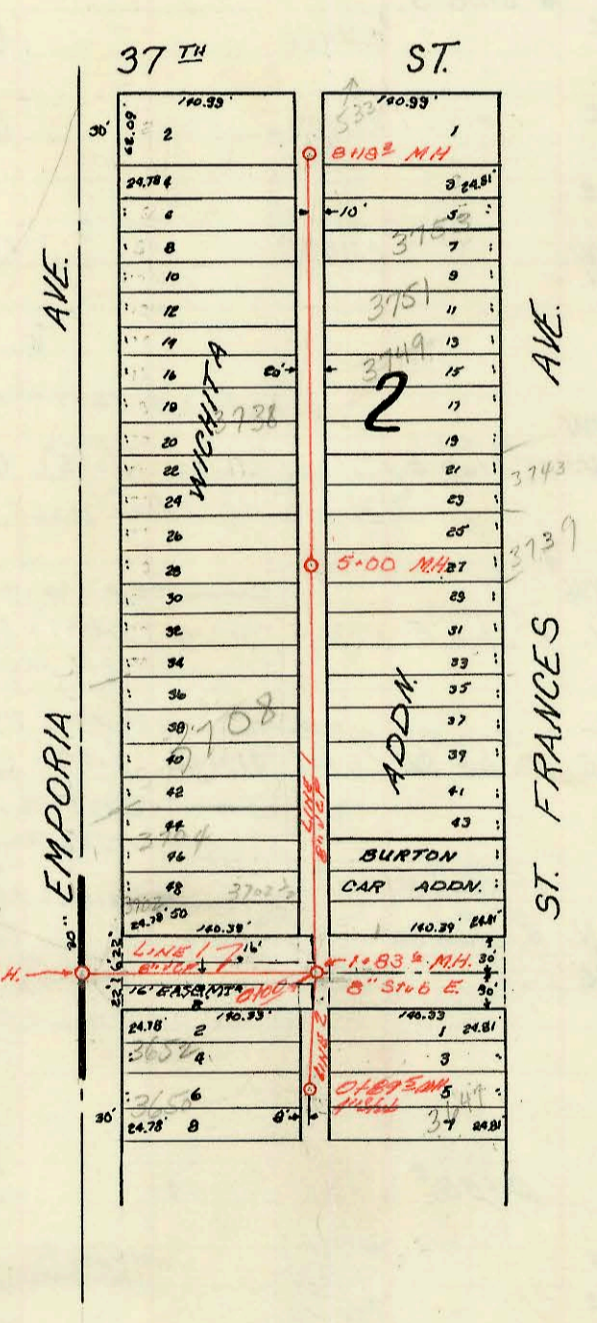


LAT. 52, SUB 17, S. S. NO. 22  
 MID-STATES CONST. CO. INC.  
 PROJ. NO. C28-50, BK NO. K-88  
 DEC. 19, 1968



LAT. 68, SUB 4, SS. 23  
 MID-STATES CONST. CO. INC.  
 PROJ. NO. C28-64, BK. NO. K-76A  
 MAR 4, 1969

36<sup>TH</sup> ST. vacated

CONSTRUCTION RECORD						SERVICE RECORD						
STATION	ELEVATION		Depth	MANHOLE	4-INCH "Y" BRANCHES		No. of Permit		House Number		DATE OF PERMITS	
	Ground	Grade			North West	South East	North West	South East	North West	South East	North West	South East
0+00	129.2	119.00	10.2	0+00 <sup>o</sup> New M.H.								
1+00	128.0	119.30	8.7		0+77 <sup>2</sup> 1+26 <sup>3</sup> 1+85 <sup>1</sup>		C48560 C11877		1802 W. 30th No. 1820 W. 30th St. No.		3-5-75 12-9-68	
2+00	128.4 128.6	119.60 119.77	8.8 8.8									
3+00	128.5	119.90	8.6	2+54 <sup>2</sup>								
4+00	129.5	120.20	9.3									
	130.0	120.29	9.7	4+62 <sup>3</sup>	3+99.3 <sup>o</sup> 4+15 <sup>o</sup> 4" stub SW		C51472		3101 St. Judith Plac		1-23-75	
5+00	130.1	120.60	9.5		4+94 <sup>o</sup> 5+48 <sup>o</sup>	4+92 <sup>o</sup> 5+46 <sup>o</sup>	C16173 C52080		3108 St. 3167 N. St. Jude		10-6-69 10-23-75	
6+00	130.3	120.90	9.4		6+09 <sup>o</sup> 6+31 <sup>o</sup>		C50434 C51136		3116 St. Charles	3115 St. Judith	7-21-75	9/2/75
	130.8	121.14	9.7	6+76 <sup>o</sup>	4" stub NW 4" stub E		C53961 C23423 C50435		3121 St. Judith	3148 N. 3127 St. Jude	3-24-71	7-21-75
CAT 68 SUB 4 S.S. #23												
	132.7	121.34	11.4	0+00	New M.H. 0+83 <sup>o</sup>		C51983 C13270				10-9-75 3-26-69	
1+00	132.4	121.74	10.7		0+93 <sup>o</sup>				3652 N. Emporia			
	132.0	122.07 Out 122.15 In	9.9	1+83 <sup>o</sup>	8" stub E = 0+00 Line 2							
2+00	132.1	122.24	9.9		2+02 <sup>o</sup> 2+51.6 <sup>o</sup> 2+56.6 <sup>o</sup> 2+83.9 <sup>o</sup>	2+19 <sup>o</sup>	C51771 C35376 C51774 C19152		3702 N. Emporia 3704 N. Emporia		10-9-75 11-8-75 10-9-75 5-6-75	
3+00	132.5	122.64	9.9			3+05 <sup>o</sup> 3+52 <sup>o</sup> 3+64 <sup>o</sup>						
						3+71 <sup>o</sup>						
4+00	132.2	123.04	9.2		4+37 <sup>o</sup> 4+92 <sup>o</sup>	4+39 <sup>o</sup> 4+94 <sup>o</sup>	C51772 C32451		3708 N. Emporia		10-9-75 5-24-75	
5+00	132.4	123.44	9.0	5+00 <sup>o</sup>	5+25 <sup>o</sup> 5+79 <sup>o</sup>	5+63 <sup>o</sup>	C51771 C16711		S.O. 3739 N. St. Francis		10-9-75 11-13-69	
6+00	132.6	123.84	8.8		6+22 <sup>o</sup> 6+56 <sup>o</sup>	6+43 <sup>o</sup>	C51778 C13686		3738 N. Emporia		10-9-75 4-22-69	
						6+43 <sup>o</sup>	C51770 C3411		S.O. 3749 N. St. Francis		10-9-75 8-8-72	
7+00	132.6	124.24	8.7		7+03 <sup>o</sup> 7+44 <sup>o</sup> 7+98 <sup>o</sup>	7+57 <sup>o</sup>	C51769 C19789 C51766 C13806		S.O. 3751 N. St. Francis 3753 N. St. Francis		10-9-75 4-13-70 10-9-75 4-29-69	
8+00	132.8	124.64	8.2		8+00 <sup>o</sup>		S.O. C52020 C19058		533 E. 37 1/2 N.		10-21-75 5-1-70	
	133.0	124.72	8.3	8+18 <sup>o</sup>								
LINE #2												
	132.0	122.07 Out 122.24 In	9.9	0+00	1+83 <sup>o</sup> 0+28 <sup>o</sup>	LINE #1						
					0+40 <sup>o</sup> 0+67 <sup>o</sup>							
	131.7	123.08	8.6	0+89 <sup>o</sup>	4" stub W. STUB OF EAST		C70801 C17318		3611 N. St. Francis S.O. 3647 N. St. Francis		11-21-75 3-22-79	12-15-69

So Al Hanning 3743 N. St. Francis - 7-7-77-