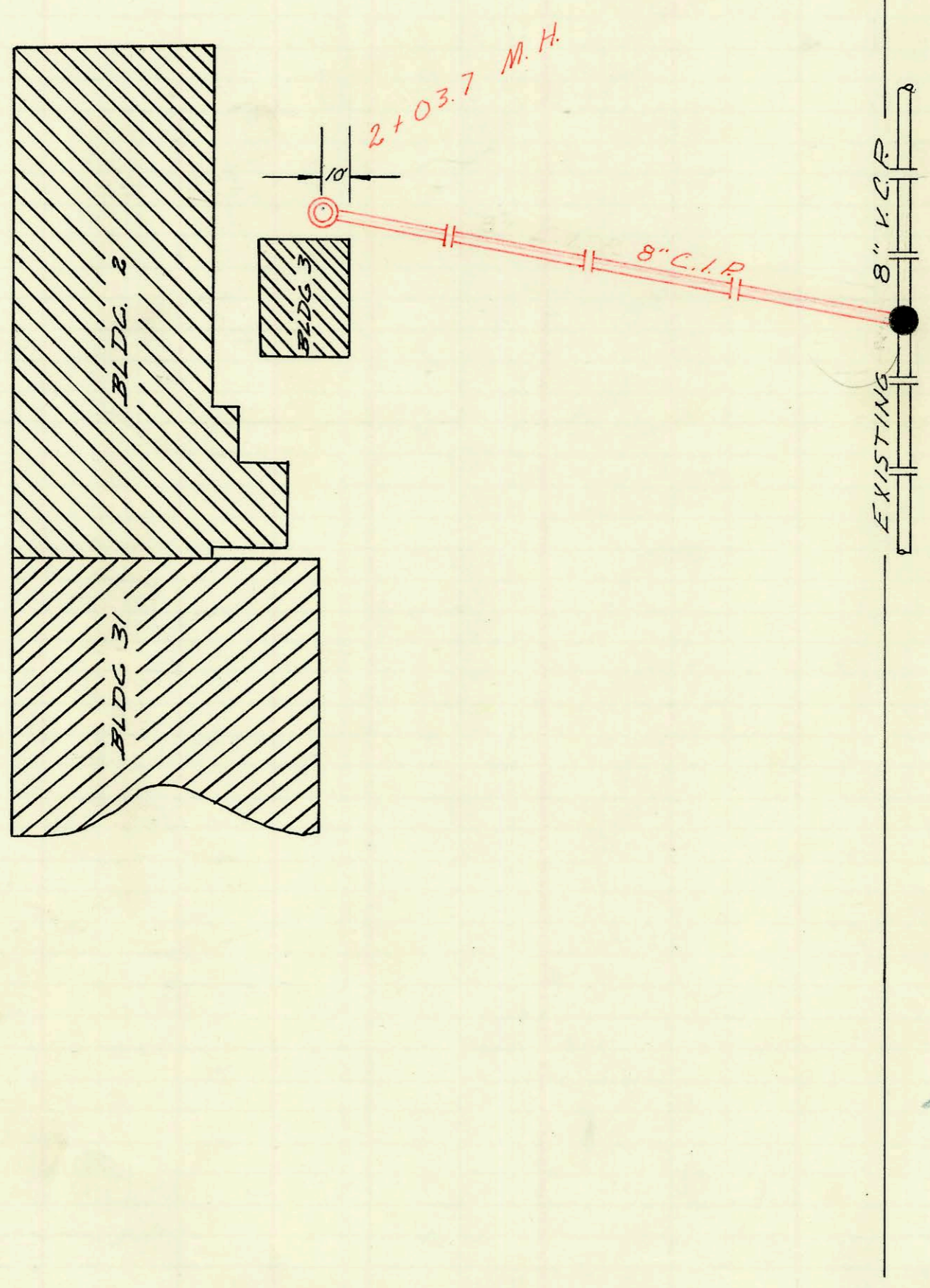


SERVICE RECORD				CONSTRUCTION RECORD			
DATE OF SERVICE	NO. OF SERVICE	NO. OF REPAIRS	NO. OF REVISIONS	DATE	REVISION	REVISION	REVISION
	37 ST.		NO.				



SCALE = 1" = 40'

0+00 Exist. M.H.
Req. 8" C.I.P.

S.L. & S.F. R.R. R/W (Vacated Washington)

COLEMAN NORTH PLANT S.S.
 UTILITY CONTRACTORS INC.
 BOOKED 4/1/69 Proj. Private
 1H-4

(Handwritten signature)

CONSTRUCTION RECORD						SERVICE RECORD						
STATION	ELEVATION		Depth	MANHOLE	4-INCH "Y" BRANCHES		No. of Permit		House Number		DATE OF PERMITS	
	Ground	Grade			North West	South East	North West	South East	North West	South East	North West	South East
0+00	132.1	127.00	5.1	EXISTING 0+00								
1+00	130.5	127.50	3.0									
2+00	131.7	128.02	3.7									
	131.7	128.02	3.7	2+03.7								

C36223-801 E. 37th St. No. - 12-4-72 - Everett Harrison - used pipe in private line (Coleman addition)
 C33460-801 E. 37th St. No. - 7-10-72 - Everett Harrison (new M.H. at 31+36) rerouted part of line with cast iron
 SO C33459- " " " " " " (located 9' S.E. of new M.H. 33+15.6) (Richard entrance)
 C14416-801 E. 37th St. No. - (Coleman Main Bldg.) Pray Bros. 6-10-67 - (Stub in 2nd M.H. So. of 37th St.)
 C17386-801 E. 37th St. No. - (Coleman North Plant) Herco Pkg. 12-19-69 - (New M.H. with 6" stub built over 8" main ext.