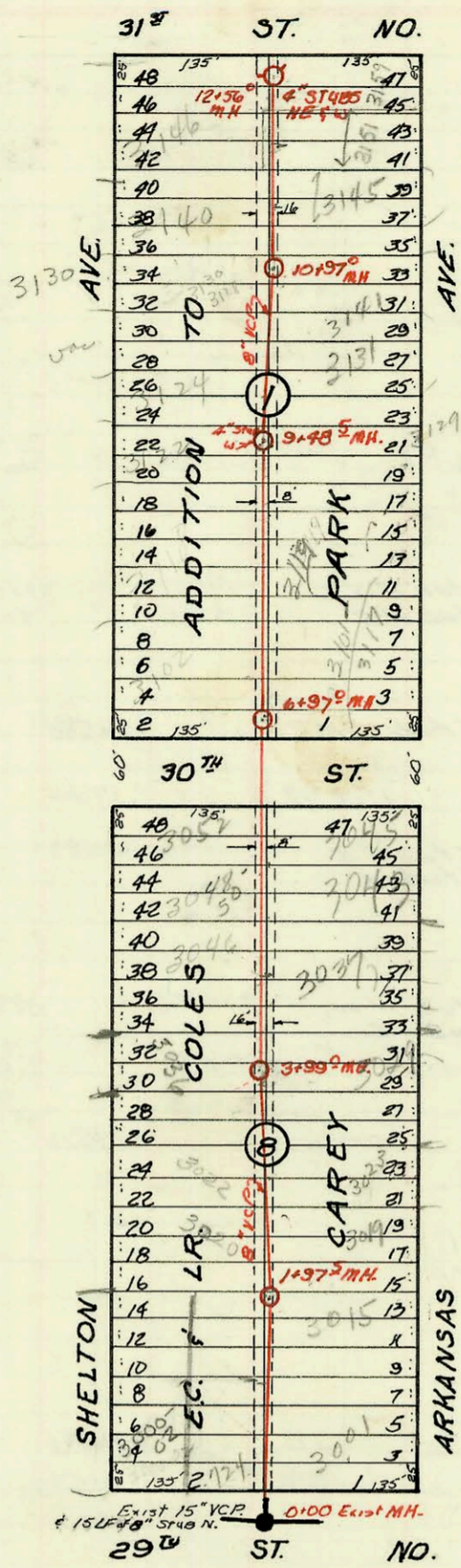
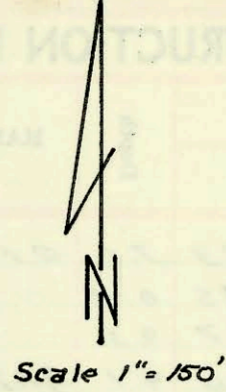


SERVICE RECORD

CONSTRUCTION RECORD



LAT 34, SUB A, SS # 29
 W.B. Carter Const. Co. Inc.
 Proj No. C23-86
 Booked 4-8-69 BX # K-88

OPTIONAL

CONSTRUCTION RECORD						SERVICE RECORD											
STATION	ELEVATION		Depth	MANHOLE	4-INCH "Y" BRANCHES		No. of Permit		House Number		DATE OF PERMITS						
	Ground	Grade			North West	South East	North West	South East	North West	South East	North West	South East					
1+00	130.8	119.57	11.2	0+00	Exist MN	92.4 top 8' stub N.	C76107		710 W 37th N			1-14-80					
	132.1	120.07	12.0		1+10.0												
					1+22.2	C13580							724 W. 29th N. 3000-02 Shelton	3001 N. Arkansas	4-15-69	1-1-80	
					1+24.2	C13579									4-15-69		
2+00	131.7	120.56	11.1	1+97.5	1+55.0	1+87.5	C13570		3015 Arkansas			4-10-69					
													2+35.5	C17187	3020 Shelton	1-2-4-69	
													2+27.0				
													2+62.6	C13509	C13939	3022 Shelton	3019 N. Arkansas
3+00	132.7	121.07	11.6		2+65.5	3+03.0	2324-7		3023 Arkansas			6-3-91					
													3+33.0				
													3+89.0	26076	3036 Shelton	9-5-90	
													4+18.0	C22350	3029 N Shelton	10-1-71	
4+00	132.7	121.57	11.1	3+99.0	4+40.0	4+88.0	9210		3037 Arkansas			9-16-83					
													4+95.0	C21671	3046 Shelton	11-6-70	
													5+36.5	C60396	3048-50 Shelton	3-16-77	
													5+48.5	126417	3043 Arkansas	8-12-71	
5+00	133.0	122.07	10.9		5+92.0	5+90.0	C13805	C14492	3052 Shelton	3045 Arkansas		4-29-69	6-16-69				
														6+91.0	C17468	3101 N. Arkansas	12-24-69
														7+37.0	92-4268-7	3102 Shelton	3-26-92
														8+03.0			
6+00	133.1	122.57	10.5	6+97.0	8+50.0	8+76.0	11279	7708	3112 Shelton	3119 Arkansas		6-26-84					
													8+78.0				
													9+07.5	6117	3117 Arkansas	7-7-82	
													9+26.5	C13668	3129 N. Arkansas	4-21-69	
7+00	132.7	123.07	9.6	7+37.0	9+48.5	9+87.5	57757	C25021	3100 Shelton	3131 N. Arkansas		9-17-76	6-22-71				
														9+87.5			
														9+95.0	C13481		
														10+22.0	C62329	3126 Shelton	7-29-77
8+00	132.9	123.57	9.3	8+03.0	10+81.0	10+79.0	C18773		3128 Shelton			4-13-70					
													10+83.0	C18772	3130 Shelton	4-13-70	
													11+11.0	C13622	3141 N. Arkansas	4-16-69	
													11+48.0	C13440	3145 N. Arkansas	4-16-69	
9+00	133.6	124.07	9.5	9+48.5	11+91.0	11+98.0	C13450	93-2752-7	3140 Shelton	3151 N. Arkansas		10-20-93					
													12+46.0	C14192	3146 Shelton	5-22-69 (garage apt)	
													12+56.0	C32683	3159 N. Arkansas	6/6/72	
													12+56.0				