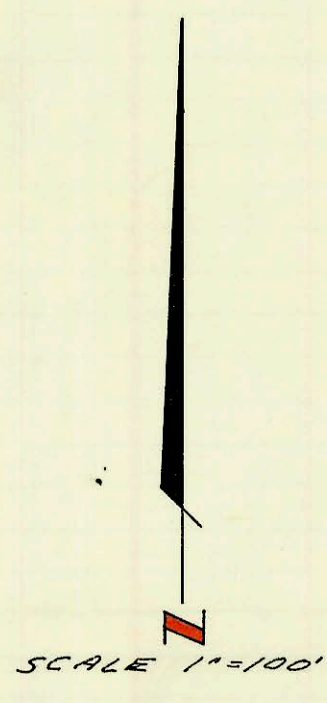
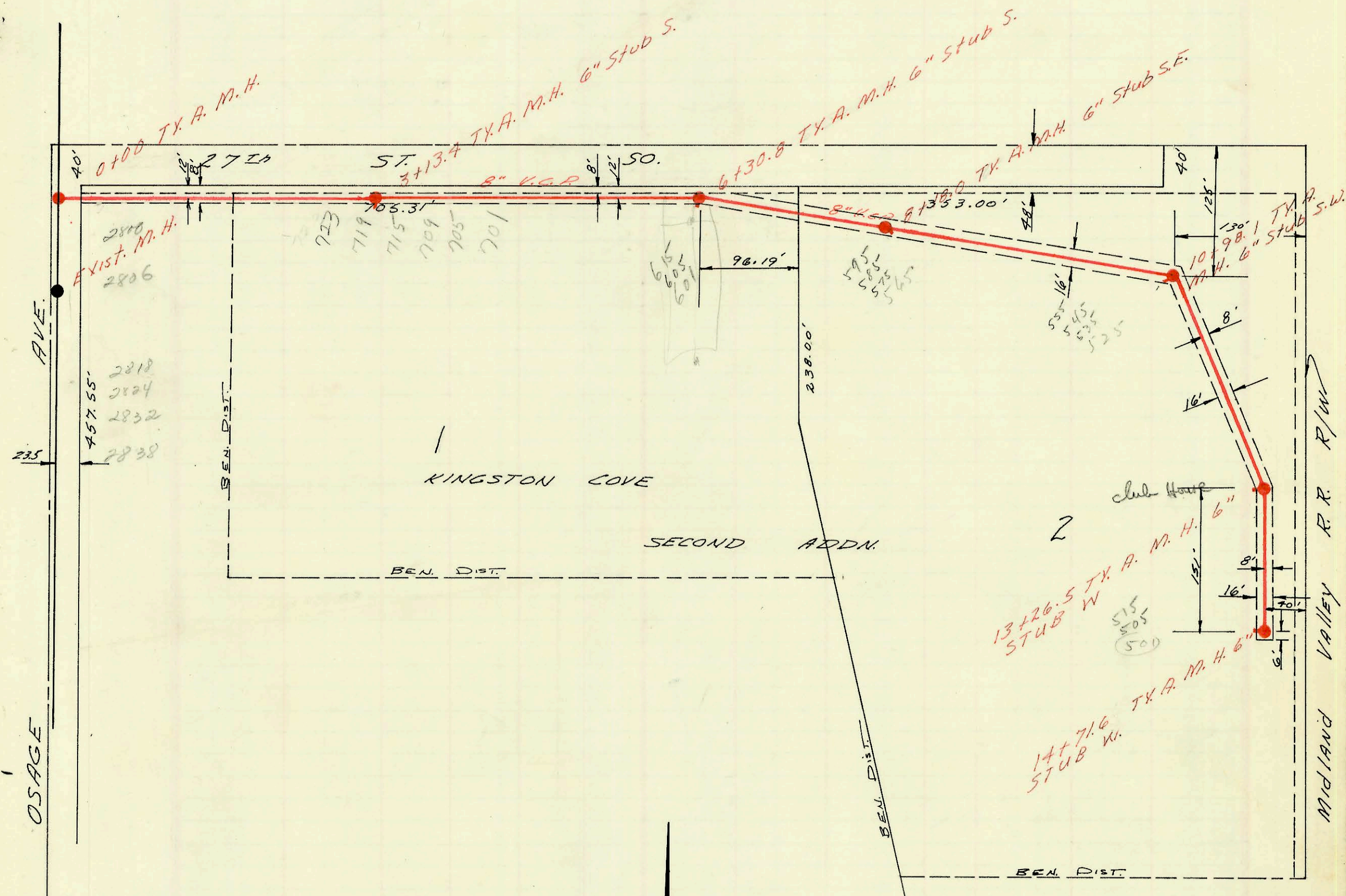


SERVICE RECORD

CONSTRUCTION RECORD

DATE OF PERMIT		WATER NUMBER		NO. OF PIPES		LENGTH IN FEET		MATERIAL		ELEVATION		STATION
Year	Month	Year	Month	Year	Month	Year	Month	Year	Month	Year	Month	



LAT. 15, SUB 4, S.S. NO. 22
 W. B. CARTER CONST. CO. INC.
 BK. 6/6/69 PROJ. C29-3
 J.K. #4

Handwritten signature/initials

CONSTRUCTION RECORD						SERVICE RECORD						
STATION	ELEVATION		Depth	MANHOLE	4-INCH "Y" BRANCHES		No. of Permit		House Number		DATE OF PERMITS	
	Ground	Grade			North West	South East	North West	South East	North West	South East	North West	South East
0+00	98.3	90.72	7.6	0+00								
1+00	98.2	90.82	7.4									
2+00	97.1	90.92	6.2									
3+00	97.7	91.02	6.4									
	97.3	91.04	6.3	3+13.4	6" Stub S							
4+00	96.4	91.12	5.3		tap 3+37 ⁰		C31795		701 W			4-24-72
5+00	97.2	91.22	6.0		tap 4+05 ⁴		C31796		27th St So.			4-24-72
6+00	98.0	91.32	6.7						705 W			
	98.8	91.35	7.5	6+30.8	6" Stub S		#C14576		27th St So.			6-19-69
7+00	98.3	91.52	6.8						601-05-15			
8+00	99.1	91.62	7.5						W. 27th St			
	99.0	91.64	7.4	8+18.0	6" Stub S.E.		#C14575		565-75-85-95			6-19-69
9+00	99.6	91.72	7.9						W. 27th St			
10+00	98.8	91.82	7.0									
	97.3	91.82	5.5	10+98.1	6" Stub S.W.		#C14574		525-35-45-55			6-19-69
11+00	97.3	92.02	5.3						W. 27th St			
12+00	96.1	92.12	4.0									
13+00	95.8	92.22	3.4									
	95.6	92.25	3.4	13+26.5	6" Stub W		#C14660		See Below			6-25-69
14+00	95.8	92.42	3.4						501-05-15			
	96.8	92.49	4.3	14+71.6	6" Stub W		#C14573		W. 27th St			6-19-69

* 519 W 27th St So.
 Sewer 2000-02702 - 12/13/2000 - 615 W 27th St S. (AKA 519 W 27th St S) Clubhouse
 Destroyed by fire McClung's & Temp SLO incident Bldg insp by K. Johnson ON
 10/15/00.
 2001-01011 8/2/01 519 W 27th St S - Beaulieu play
 Recon