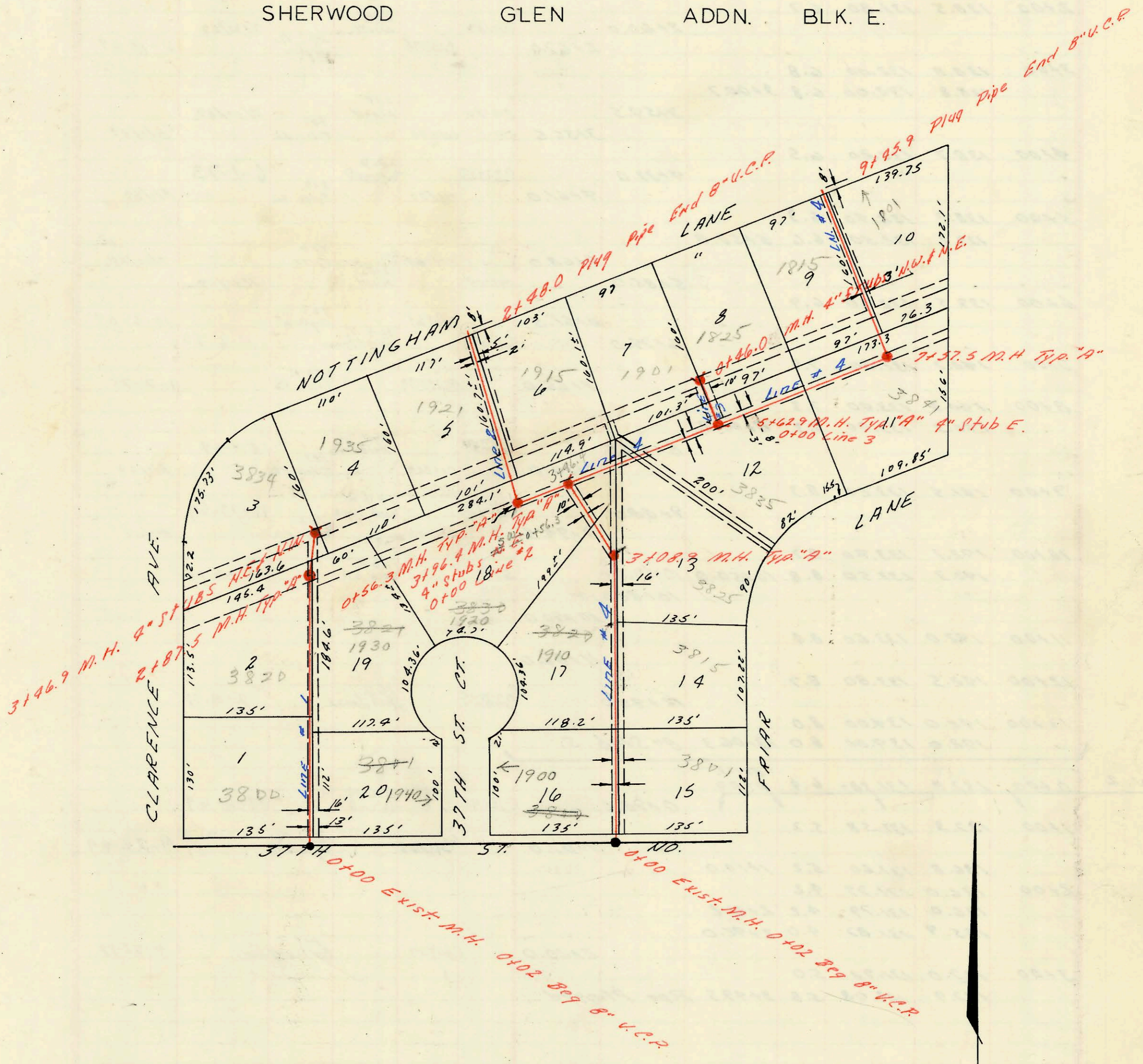


SERVICE RECORD CONSTRUCTION RECORD

SHERWOOD GLEN ADDN. BLK. E.



SCALE = 1" = 100'

LAT. 13, SUB. 21, S.S. NO. 22
 Mid States Const. Co. Inc.
 Booked 7/30/69 Proj. C28-35
 J. A. K. S.S.#11

Handwritten signature/initials: J. A. K.

CONSTRUCTION RECORD						SERVICE RECORD							
STATION	ELEVATION		Depth	MANHOLE	4-INCH "Y" BRANCHES		No. of Permit		House Number		DATE OF PERMITS		
	Ground	Grade			North West	South East	North West	South East	North West	South East	North West	South East	
Ln #1	0+00	134.2	126.08	8.1	EXIST. 0+00								
	0+02	beg 8" U.C.P.				0+20.0							
	1+00	134.9	126.58	8.3			0+22.0						
	2+00	135.5	127.08	8.4		1+61.6		C14218	3820 N. Clarence		5-26-69		
Ln #2	2+00	135.0	127.52	7.5	2+87.5		2+17.0		C14219	1930 W. 37th St. Ct.		5-26-69	
	3+00	135.4	127.92	7.5	3+96.9	4" Stub N.E. N.W.		N.E. C15121	N.W. C20702	N.E. 1935 Nottingham	3834 N. Clarence	N.E. 7-28-69	8-26-70
	0+00	134.7	126.54	8.2	EXIST. 0+00								
Line #2	0+00	134.7	126.54	8.2	EXIST. 0+00								
	1+00	135.2	126.84	8.4	0+56.3	4" Stub S.W.		C21335	1920 W. 37th St. Ct. N.		10-13-70		
	2+00	135.5	127.09	8.5			1+22.0		C18233	1915 Nottingham		3-3-70	
	2+00	134.5	127.19	7.9	2+98.0	Pipe Plugged	1+33.1		C43224	1921 Nottingham		1-27-74	
Line #3	0+00	135.3	126.97	8.3	EXIST. 0+00								
	0+00	135.4	127.77	7.9	0+96.0	4" Stubs N.W. & N.E.		C15356	C15355	1901 Nottingham	1825 Nottingham	8-12-69	8-12-69
Line #4	0+00	134.0	125.55	8.5	EXIST. 0+00								
	0+02	beg 8" U.C.P.					0+40.8						
	1+00	134.3	125.75	8.6		0+76.9		C15435	1900 W. 37th St. Court		8-15-69		
	2+00	134.9	125.95	9.0		1+97.0			C55455	3815 Spruce Lane		5-17-70	
	3+00	134.9	126.17	8.7		2+39.2		C17343	1910 37th St. Ct. N.		12-17-69		
	3+00	134.9	126.17	8.7	3+08.9	4" Stub N.E.			C15357	3825 Spruce Lane		8-12-69	
	4+00	134.7	126.44	8.3	3+96.7	4" Stub N.E.							
	5+00	135.2	126.75	8.5			5+42.9		C15122	3835 Spruce Lane		7-28-69	
	6+00	135.4	126.95	8.9			5+91.6						
	7+00	134.4	127.15	7.3			7+19.5		C15412	3841 Spruce Lane		8-15-69	
	8+00	134.5	127.26	7.2	7+57.5								
	8+00	134.5	127.45	7.1			8+33.1		C15125	1801 Nottingham		7-30-69	
9+00	134.1	127.65	6.5			8+35.1							
9+00	133.0	127.72	5.3	9+45.9	Pipe Plugged								