

private easement granted in Lot 5P (it)

10' Utility Easement by separate easement

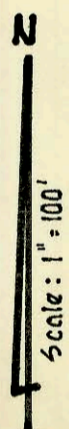
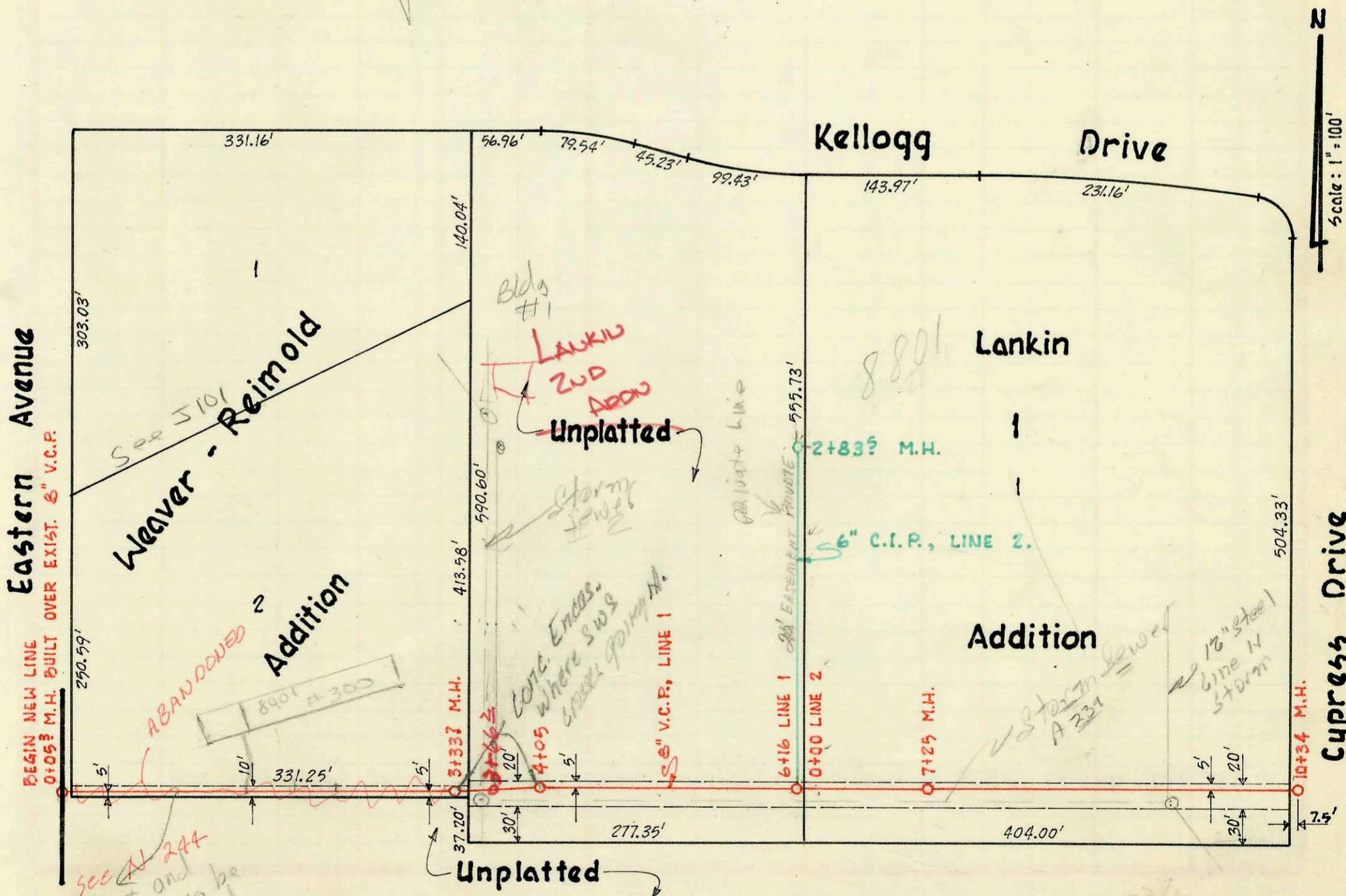
Lat. 3, Sub. 14, W.I.S.

Utility Contractors Inc.

Date: 9-10-69 Project No. C24-39

Book 250-4

on map



SEE A 244
Replat and
sewer to be
relocated
6-26-69
BL

Private Project - Sanitary Sewer - Lankin Addition

Mid-States Construction Co. Inc.

Date: 9-10-69 Booked From Plan

on map

CONSTRUCTION RECORD

SERVICE RECORD

Lat. 1, Sub. 14, W.I.S.

Lat. 3, Sub. 14, W.I.S.

Private Project - Lankin Addition

STATION	ELEVATION		Depth	MANHOLE	4-INCH "Y" BRANCHES		No. of Permit		House Number		DATE OF PERMITS	
	Ground	Grade			North West	South East	North West	South East	North West	South East	North West	South East
Line 5 from page M-54												
0+00	121.4	114.00	7.4	0+00	Exist. M.H.	-4" stub N.	C16158		3431			10-3-69
					0+80°		C33324		Craig			6-30-72
1+00	125.2	115.20	10.0			1+22°						
						1+80°		C23600	3451			4-5-71
2+00	128.4	116.40	12.0			2+34°			3451 (front)			
						2+54°		C23599	Craig			4-5-71
	129.2	117.60	11.6	2+99°		2+55°		C18036	3536			2-18-70
						3+36°		C18031	3534			2-18-70
4+00	130.1	118.80	11.3					C33911	3501			7/27/72
5+00	131.3	120.00	11.3									
	131.4	120.18 in 120.28 out	11.2	5+12°		8" stub E.						
						5+01°						
						5+36°						
						5+90°		C18537	C17644	3517	3517 S.	3-26-70
6+00	131.7	121.30	10.4			5+23°			Craig	Clifton		-14-70
						6+22°						
	131.7	121.78	9.9	6+37°		6+16.8°		C62978		3525		4-9-77
0+00	124.3	113.40	10.9	0+00	Exist. M.H.							
	122.7	113.89 in 113.79 out	8.9	0+66°		0+51.5°		11304		3355		6-27-74
1+00	122.2	114.10	8.1			1+08°						
						1+30°						
2+25	120.3	114.85	5.5			1+69°		C69648	C43467	3346 S.	3345 S.	12-1-78
3+00	122.5	115.30	7.2			2+91.1°		16971	C20771	3334	Clifton	9-16-86
4+00	122.5	115.60	6.9	3+46°		3+91°		C23253		3326 S.		4-27-71
	124.0	117.49	6.5			4+70°		C59781		3308 S.		2-7-77
5+00	128.6	118.99	9.6			4+70°		C16455		3317 S.	Clifton	11-24-69
6+00	131.6	120.49	11.1			5+55°		C18113		3300 S.	Clifton	2-24-70
6+45	132.0	121.12	10.9			5+82°		C16460		3301 S.	Clifton	10-24-69
						Plug at end of Line.						
Line 1												
0+00	142.9	136.22 in 136.12 out	6.8	0+00	Exist. M.H.							
1+00	144.2	136.58	7.6	0+05°	Begin Project							
2+00	145.2	136.98	8.2									
3+00	146.4	137.38	9.0									
	146.6	137.68 in 137.92 out	9.1	3+33°								
4+00	146.6	137.95	8.6	4+05°				13126		8801 E.		3-4-85
	146.6	138.17 in 137.97 out	8.6									
5+00	146.8	138.54	8.3									
6+00	149.9	138.94	11.0									
	150.8	139.00	11.8	6+16°	= 0+00 Line 2			C15345		8801 E.		8-11-69
7+00	151.2	139.34	11.9									
	151.3	139.63 in 139.43 out	11.9	7+25°								
8+00	151.6	139.92	11.7									
9+00	152.0	140.32	11.7									
10+00	151.7	140.72	11.0									
	151.4	140.85	10.6	10+34°								
Line 2												
0+00	150.8	139.10	11.7	0+00	Exist. M.H.	-6+16° Line 1				8801 E.		8-29-69
						0+13°		C15667		KELLOGG (Bldg #4)		8-29-69
						0+95°		C15666		8801 E. Kell		8-29-69
1+00	140.10					6+02.4°		C52811	C15678	8801 E. Kell	8801 E. Kell	12/15/75
2+00	141.10					4" stub N. & E.		C14891	C14892	8801 E. Kell	8801 E. Kell	7-11-69

8801 E Kellogg Bldg #1 (small bldg at NW corner of lot) r/o wrecked.
 Drain layer will lay new service line for new bldg for BMW sales. Refer
 to permit SWR 2000-01918 below
 SWR 2000-01918 8801 E Kellogg BMW sales Bldg - N.E. - A to A Mech -