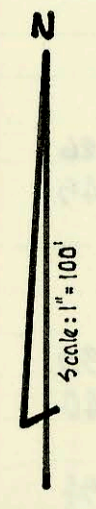
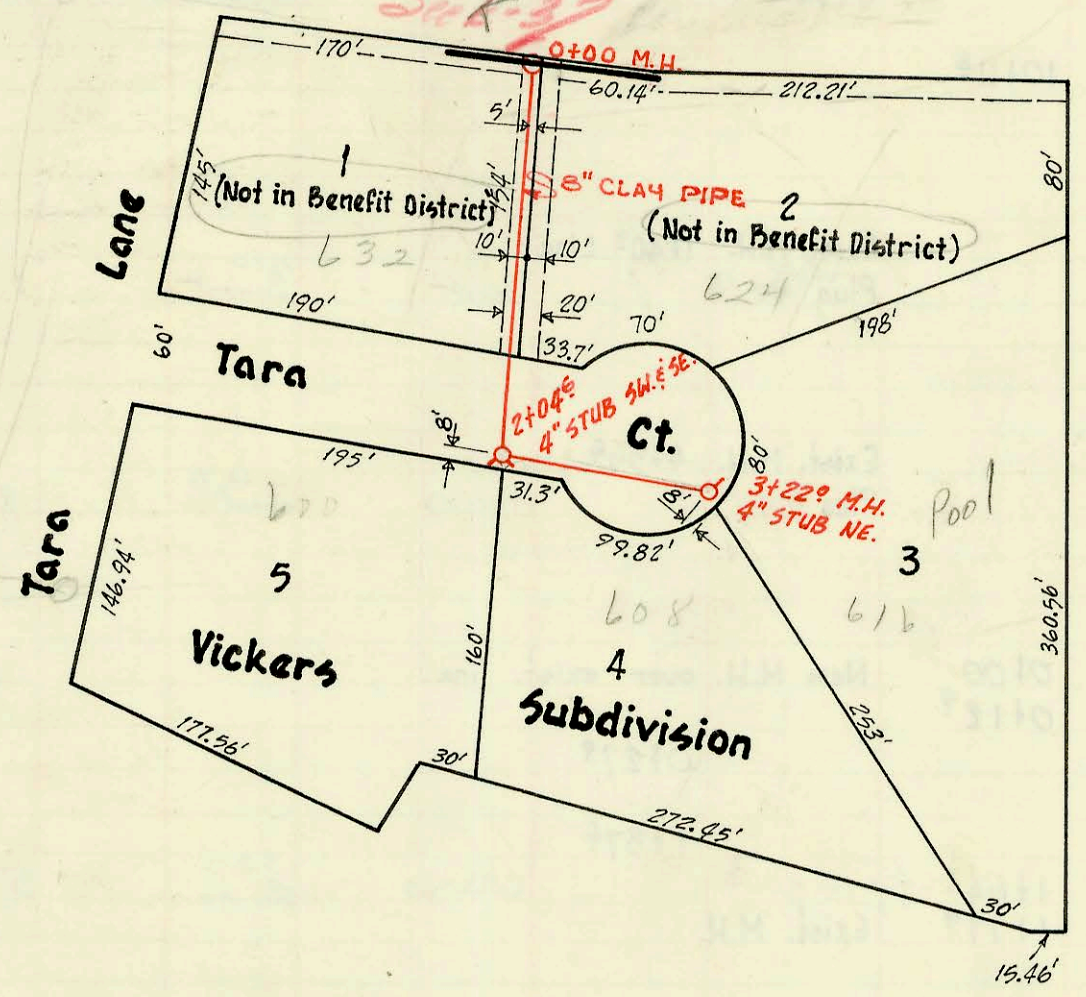


Reconstruction of North Branch of
E. Sub. A, Sanitary Sewer No. 1
 in Alley bet. Main & Water, 175' to 392' N. of Douglas
 W. B. Carter Construction Company Inc.
 Date: Sept. 11, 1969 Proj. No. C28-77
 Book J.K. 55. 13

on map

Do not issue permits for lots 1 & 2 for this lateral
S&K-37



Lat. 14, Sub. 9, W.I.S.
 W. B. Carter Construction Company Inc.
 Date: 9-16-69 Project No. C29-23
 Book I.H.-7

on map

