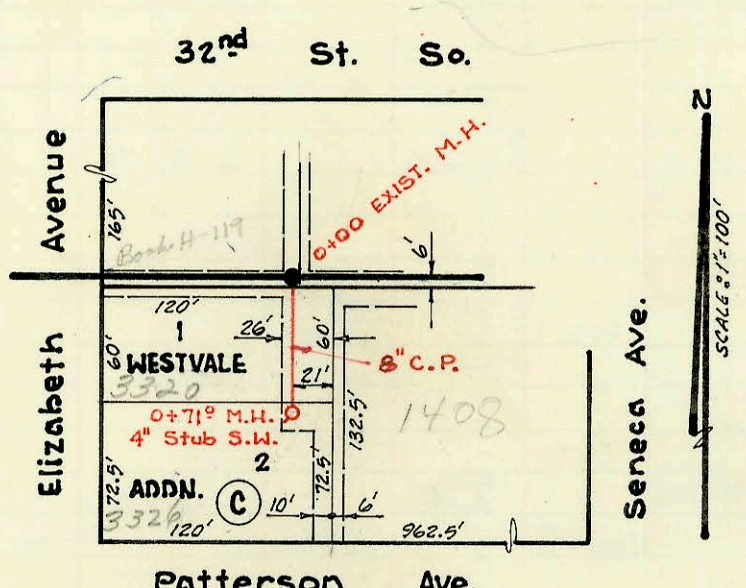
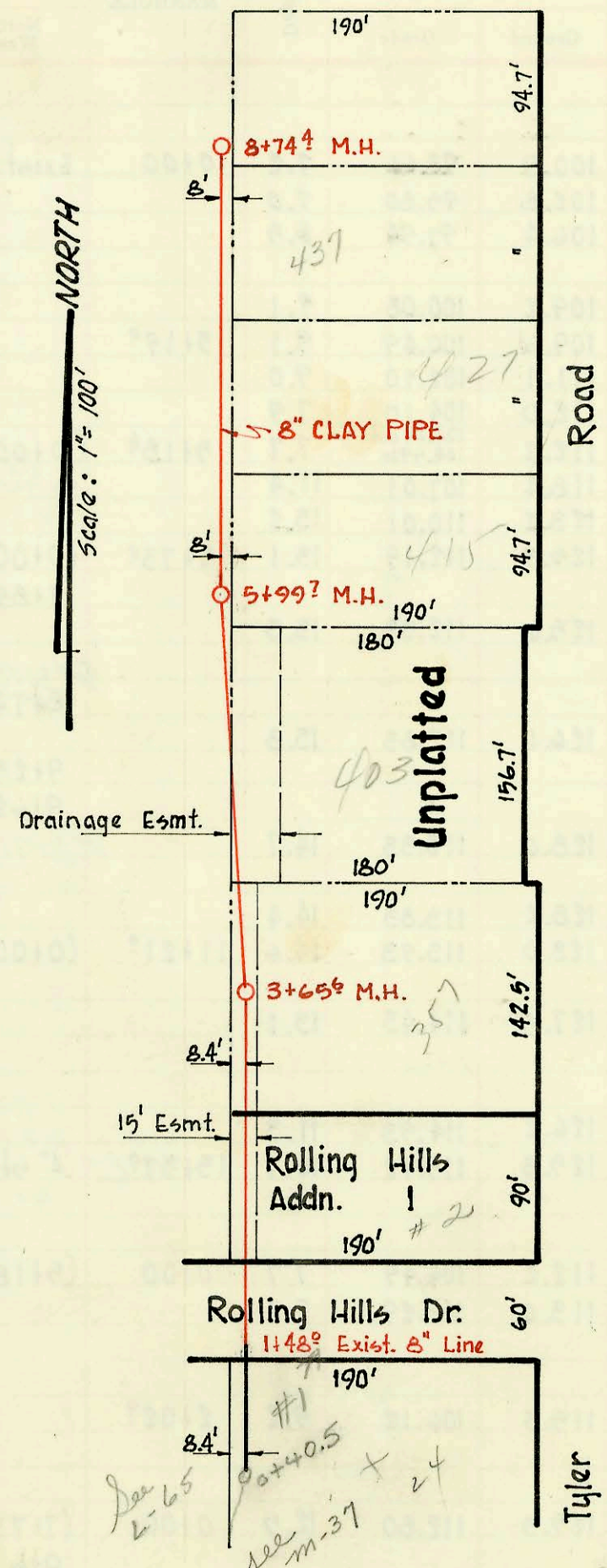


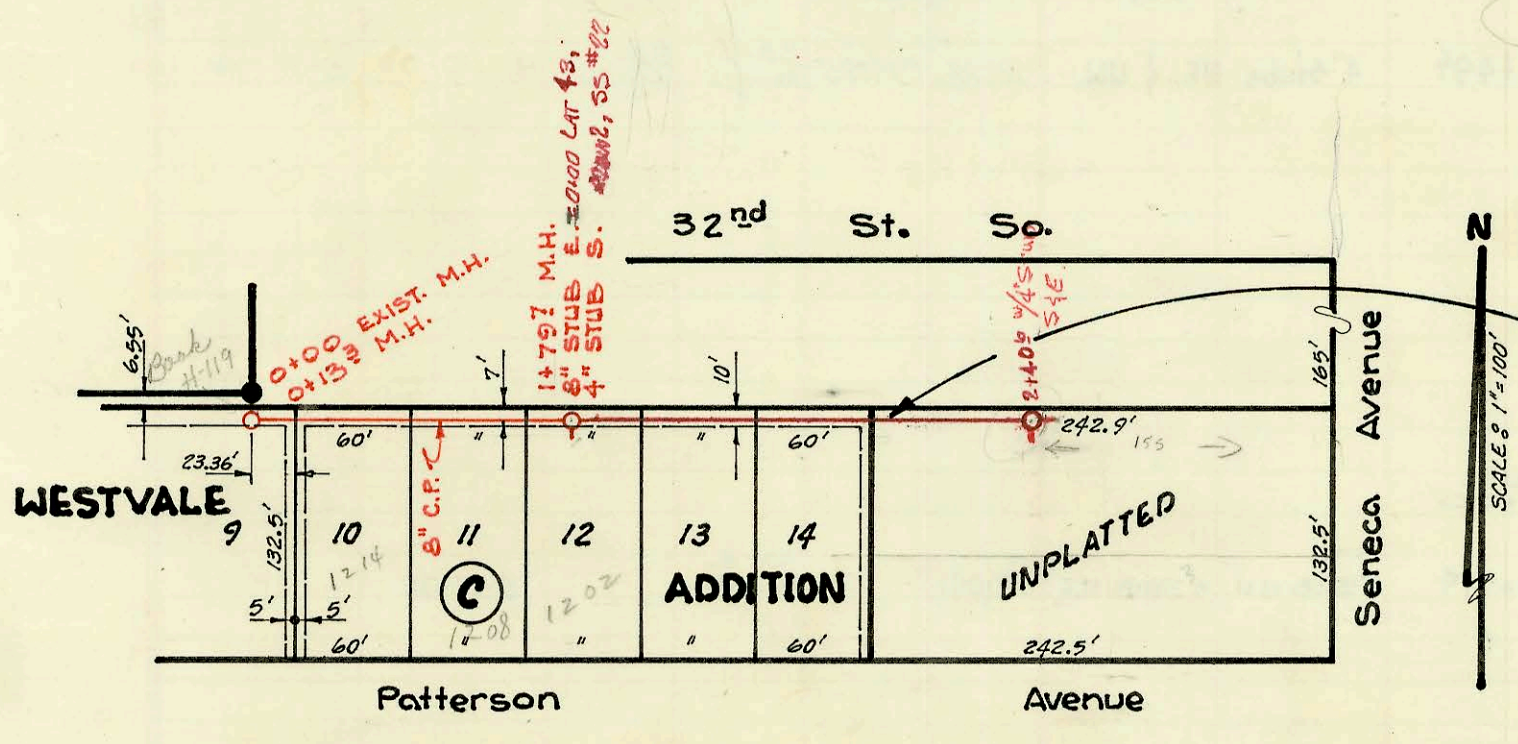
SERVICE RECORD CONSTRUCTION RECORD



EXTENSION OF
Lat. 23, Sub. 2, S.S. # 22
 Allied Utility
 Booked July 14, 1970, from S.S. JK. #6



Lat. 11, Sub. 1, Westlink
 Utility Contractors Inc.
 Jan. 20, 1970 Project No. C29-45
 Book: 66.#11 JAK



Ext. TO **Lat. 43, Sub. 2, S.S. # 22**
 Allied Utility
 Booked July 14, 1970, from S.S. JK. 6
 Private Project

Lat 43, Main 2, S.S. # 22
 BUILT BY: MID STATES CONST CO.
 BOOKED 9 DEC 71 FROM SS JAK # 10
 PROJ No. DBKLS68094

310
 300
 26

CONSTRUCTION RECORD						SERVICE RECORD						
STATION	ELEVATION		Depth	MANHOLE	4-INCH "Y" BRANCHES		No. of Permit		House Number		DATE OF PERMITS	
	Ground	Grade			North West	South East	North West	South East	North West	South East	North West	South East
Lat. 11, Sub. 1, Westlink												
1+48°	138.0	132.43	5.6		Begin 8" Clay Pipe							
2+00	138.9	132.53	6.4									
3+00	140.2	132.73	7.5									
	140.5	132.86	7.6	3+65°								
4+00	139.1	132.93	6.2									
5+00	137.8	133.13	4.7									
	137.5	133.33	4.2	5+99?								
7+00	138.5	133.73	4.8									
8+00	138.8	134.13	4.7									
	139.3	134.43	4.9	8+74?								
Lat. 23, Sub. 2, S.S. #22												
		87.31		EXIST. 0+00	TAP 0+34		C19920		3320 S. Elizabeth		7-1-70	
	93.7	88.50	5.2	0+71°	4" STUB S.W.		#21971		3326 S. Elizabeth		12-1-70	Comm 1-6-70
					TP 0+64		C29368		1408 Patterson		12-9-71	
Lat 43, Main 2, S.S. #22												
0+00	94.5	89.31	5.2	EXIST. MH @ 1+79								
0+02	BEGIN 8" CLAY PIPE											
1+00	94.4	89.71	4.7									
2+00	94.0	90.11	3.9									
	94.2	90.27	4.0		2+40 1/4" STUB S. 4" STUB E.		C41489		3313 S. Seneca		10-2-73	
							#29965		3325 S. Seneca		1-12-72	
EXT TO Lat. 43, Sub. 2, S.S. #22												
0+00		88.54		EXIST. 0+00								
	94.0	88.58 out	5.4	0+13°								
1+00	94.2	88.94	5.3									
	94.5	89.18	5.3	1+79?	8" STUB E. 4" STUB S.		C19829		1208 Patterson		6-25-70	
							#21206		1202 Patterson		10-2-70	