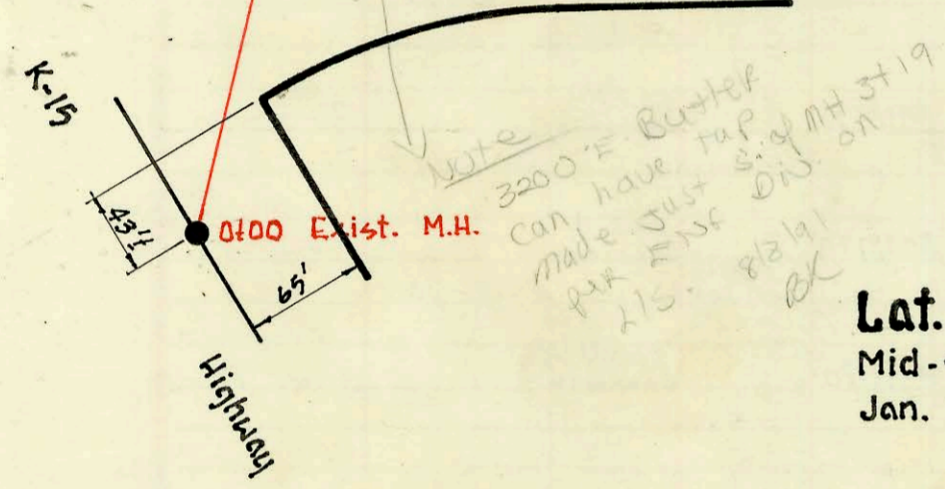
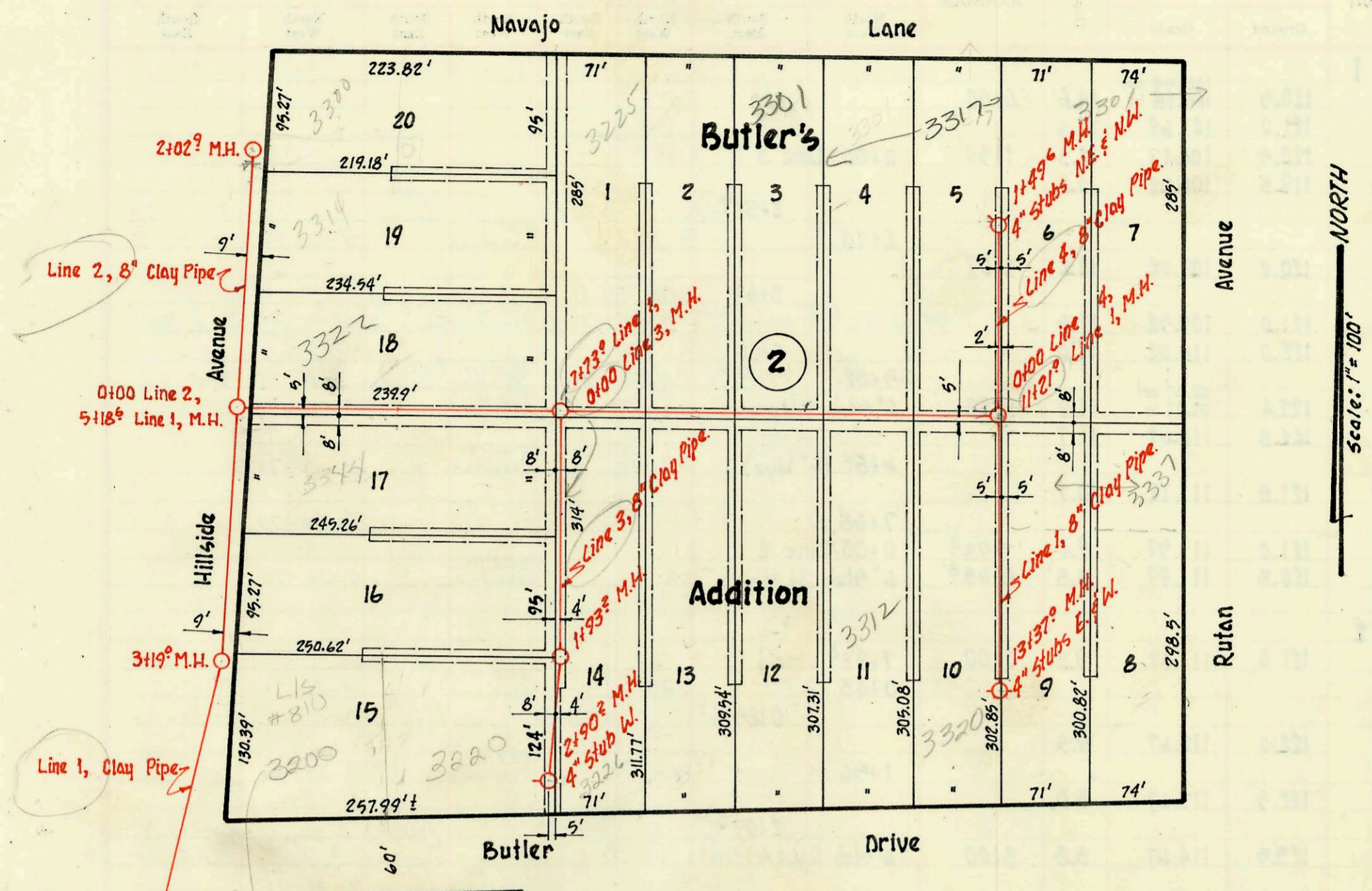
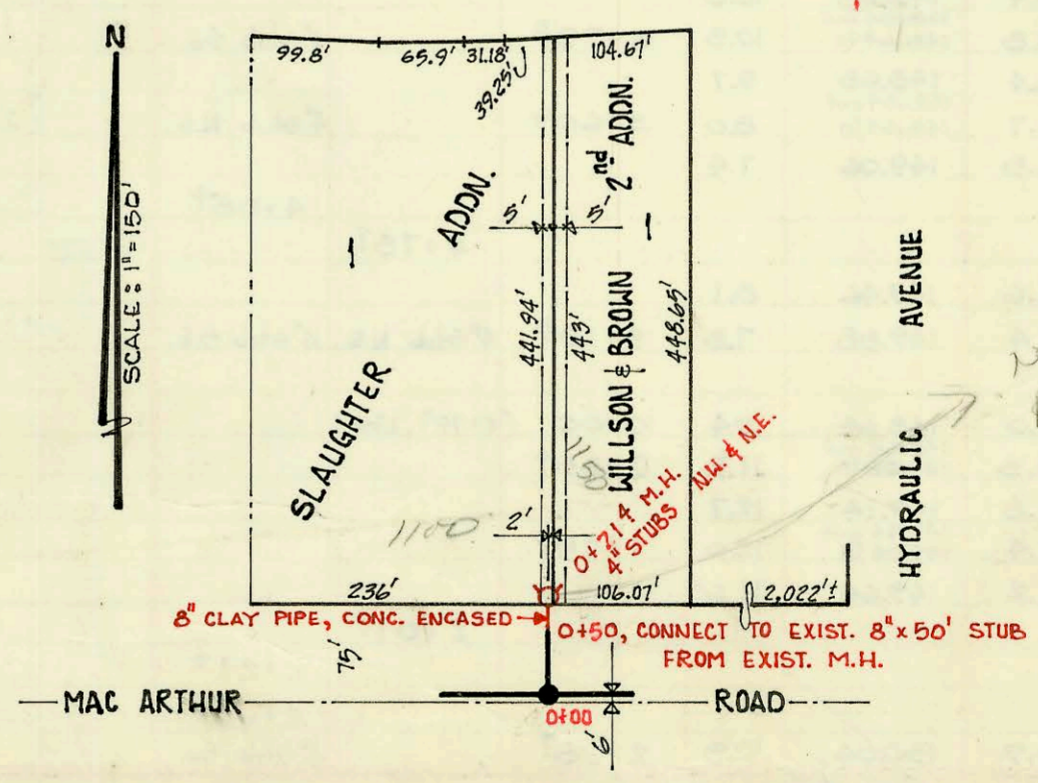


CONSTRUCTION RECORD SERVICE RECORD



Lat. 4, Submain 14, W.I.S.
 Mid-states Construction Company Inc.
 Jan. 29, 1970. Project No. C28-98
 Book: 259 Y



Lat. 2, Sub. 1, S.W.I.
 UTILITY CONTRACTORS, INC.
 BOOKED FROM 8-B, AUG. 26, 1970.
 PROJECT NO. C29-17

NORTH
 Scale: 1" = 100'

ON MAP

NO M.H. TAP per allowed
 by GRIGG. Must
 use M.H. stub.
 10/1/190
 dx

CONSTRUCTION RECORD						SERVICE RECORD						
STATION	ELEVATION		Depth	MANHOLE	4-INCH "Y" BRANCHES		No. of Permit		House Number		DATE OF PERMITS	
	Ground	Grade			North West	South East	North West	South East	North West	South East	North West	South East
Line 1												
	100.9	93.66	7.2	0+00	Exist.							
1+00	102.8	95.80	7.0									
2+00	106.4	97.94	8.5									
3+00	109.2	100.08	9.1									
	109.6	100.49	9.1	3+19°								
4+00	111.1	102.10	9.0									
5+00	112.0	104.10	7.9									
	112.2	104.49 ^{out} 104.59 ⁱⁿ	7.1	5+18°	(0+00, Line 2)							
6+00	118.4	107.01	11.4									
7+00	123.2	110.01	13.2									
	125.3	112.19	13.1	7+73°	(0+00, Line 3) 7+89°							
8+00	125.6	112.33	13.3									
9+00	126.6	112.83	13.8									
10+00	128.0	113.33	14.7									
11+00	128.2	113.83	14.4									
	128.5	113.93	14.6	11+21°	(0+00, Line 4) 11+58°							
12+00	127.5	114.43	13.1									
13+00	126.2	114.93	11.3									
	129.8	119.12	10.7	13+37°	4" stubs E. & W. no stub west							
Line 2												
	112.2	104.49	7.7	0+00	(5+18° Line 1)							
1+00	113.0	105.29	7.7									
	115.3	106.12	9.2	2+02°								
Line 3												
	125.3	112.80	12.5	0+00	(7+73°, Line 1) 0+6							
1+00	125.6	113.20	12.4									
2+00	124.7	113.58	11.1	1+93°								
	120.8	113.98	6.8	2+90°	4" stub W.							
Line 4												
	128.9	115.50	13.4	0+00	(11+21°, Line 1) 0+47°							
1+00	129.1	116.00	13.1									
	128.1	116.25	11.8	1+49°	4" stubs NE. & NW.							
Lat. 2, Sub. 1, S.W.I.												
BEGIN PROJ. 0+50	90.4	78.10	12.3		EXIST. 0+00							
	90.4	78.14	12.3	0+71°	4" STUB N.W. 4" STUB N.E.							

Tap - 3312 Butler - C38073 - 4-4-73 - Dan Bennett (9+96.4)