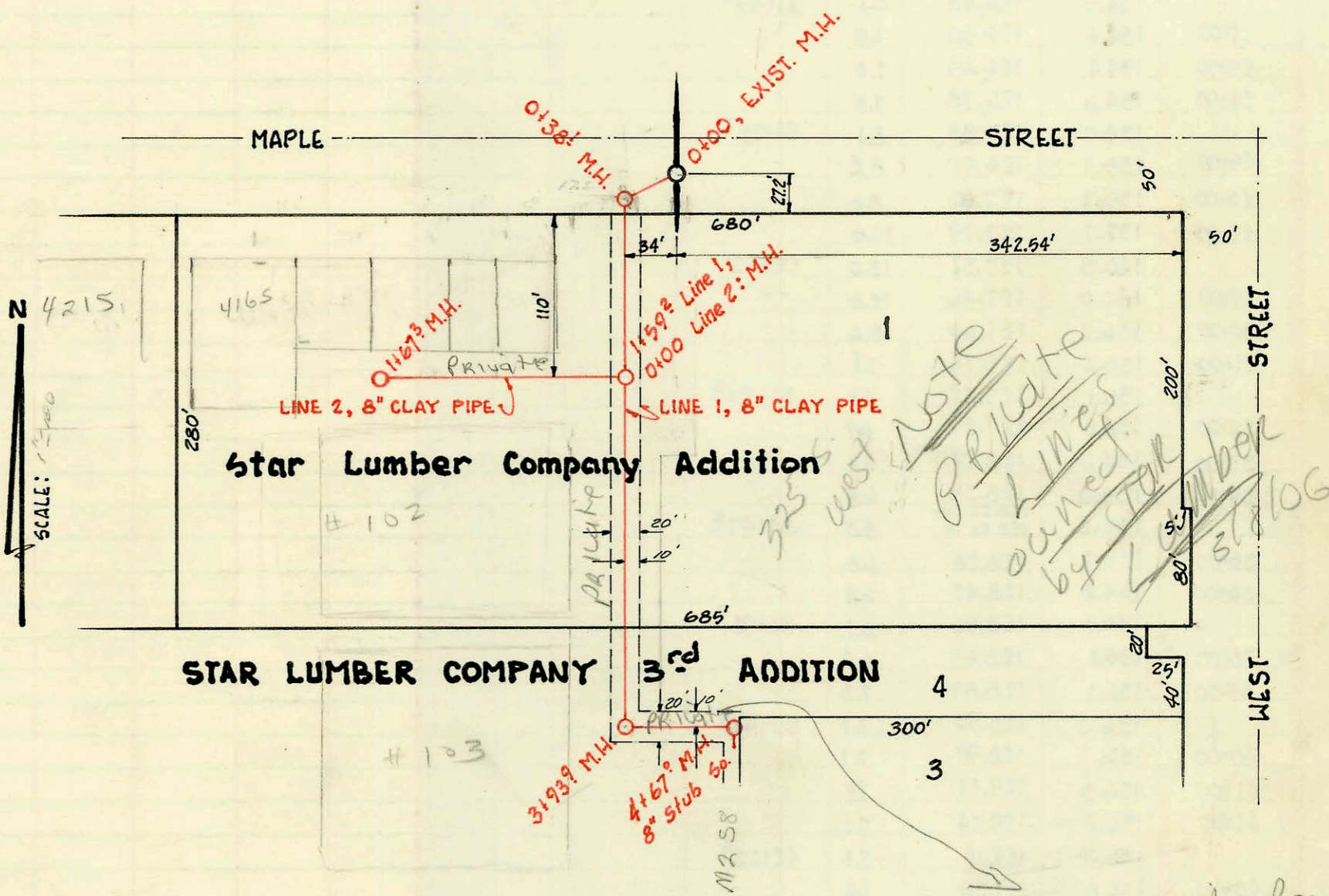


Lat. 30, Sub. 5, S.S. No. 23
 Utility Contractors, Inc.
 Booked: May 4, 1970, from I.H. 65
 Project No. C29.59

ON MAP



STAR LUMBER CO. SAN. SEWER
 Utility Contractors, Inc.
 Booked: May 15, 1970, from K-85.
 PRIVATE PROJECT

ON MAP

Per E-mail rec'd
 03/08/06 from Ladonna
 Lawrence with system planning
 No easements over recorded
 per title search by
 Gausman Company.
 Goebels agree to own
 and maintain the lines.

BR
 3-8-06

CONSTRUCTION RECORD						SERVICE RECORD						
STATION	ELEVATION		Depth	MANHOLE	4-INCH "Y" BRANCHES		No. of Permit		House Number		DATE OF PERMITS	
	Ground	Grade			North West	South East	North West	South East	North West	South East	North West	South East
Lat. 30, Sub. 5, S.S. No. 23												
	206.0	195.76	10.2	0+00	(Exist. M.H.) 0+55°(6")							
1+00	208.0	197.06	10.9		1+08.6 1+78°(6")		1959 2004 01669		6025E 5151N 2128 Farmstead		11-24-80 6-9-04	
2+00	209.4	198.36	11.0									
	210.3	199.33	11.0	2+74°	6" STUB SW							
STAR LUMBER CO. SAN. SEWER												
LINE 1												
	116.5	112.68	3.8	EXIST.	0+00							
	117.0	112.76 out 112.86 in	4.2		0+38'							
1+00	117.3	112.98	4.3									
	118.2	113.10	5.1		1+59'							
2+00	119.0	113.18	5.8									
3+00	119.6	113.38	6.2									
	119.7	113.57 out 113.66 in	6.1		3+93'							
	119.0	113.82	5.2		4+67'							
					8" STUB							
LINE 2												
	118.0	113.22	4.8	EXIST.	0+00							
					0+86'		#019540		4121 W. Maple		6-2-70	
1+00	119.2	113.60	5.6		1+27'		C18978		4117 W. Maple 4131	add	4-24-70	
					1+34'		C18977		4117 W. Maple 4141	add	4-24-70	
	118.8	113.86	4.9	1+67'	MH tap Stub west →		C27342		325 S. West (Addn)		12-7-71	
							C48624 92-7211-7 33252		4151 W. Maple 4165 W. Maple		3-17-75 5-3-70	

92-4606-7 4/2/92 4141 W Maple - Brand Plog - Rep - tied into existing line that serves 4165 W. Maple (oldg being Remodeled for both Heating & Air) (same rdg)