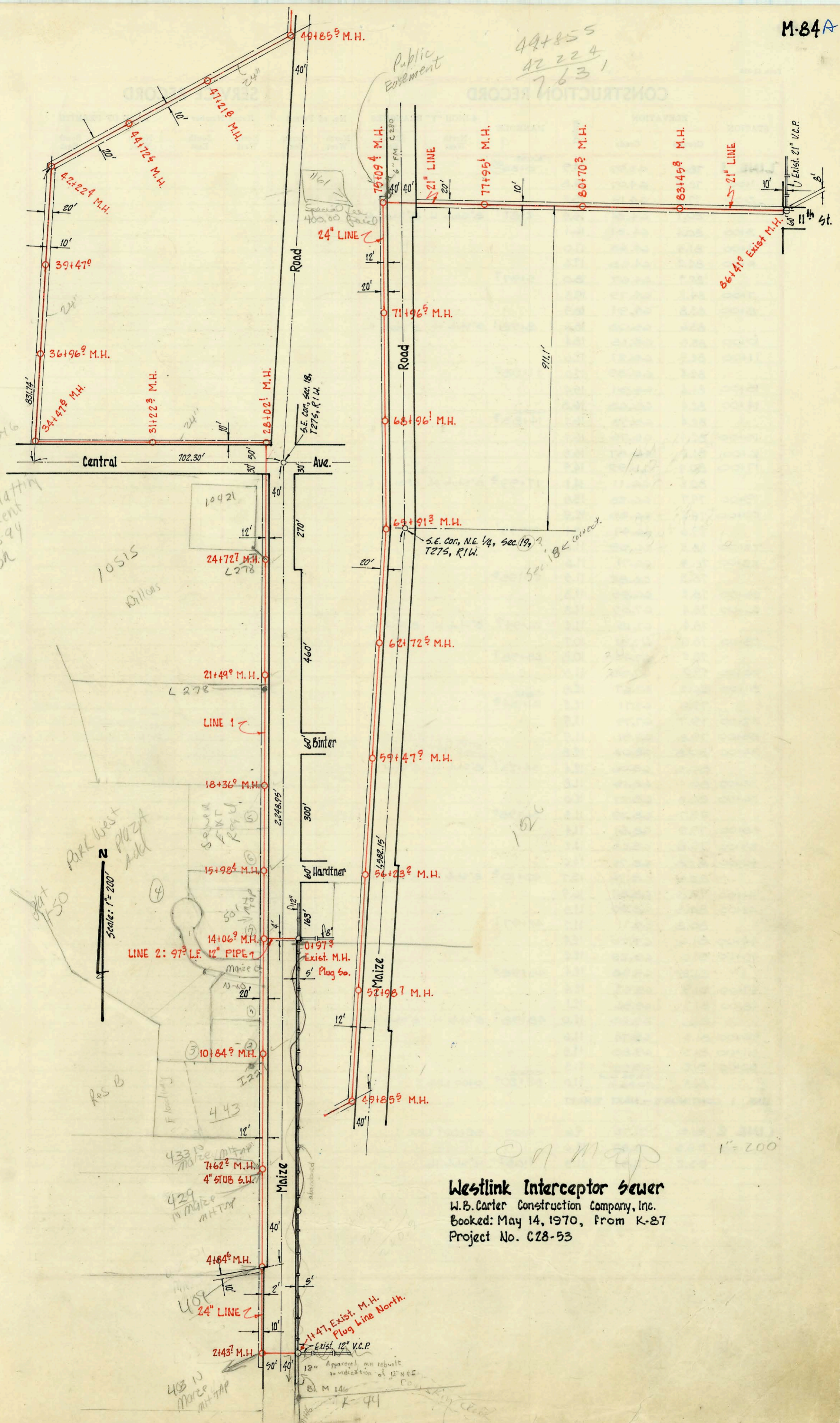


49+85.5
42 224
7.631



Requires Main FYT per New Platting Requirement 72094 BA

10515 Billions

Park West Plaza Add

Res B

Westlink Interceptor Sewer
W.B. Carter Construction Company, Inc.
Booked: May 14, 1970, from K-87
Project No. C28-53

1" = 200'

12" Apparent on rebuilt no indication of 12" N.E.S. 8 M 14

CONSTRUCTION RECORD						SERVICE RECORD						
STATION	ELEVATION		Depth	MANHOLE	4-INCH "Y" BRANCHES		No. of Permit		House Number		DATE OF PERMITS	
	Ground	Grade			North West	South East	North West	South East	North West	South East	North West	South East
LINE 1	135.7	123.69	12.0	EX. 1ST. 1447 ^o								
2+00	135.8	123.76	12.0									
	132.2	123.82	8.6	2+437 ^o MHTap			866799		408 N. Main Rd		6-13-78	
3+00	133.0	123.90	9.1									
4+00	134.0	124.04	10.0									
	133.5	124.15	9.4	4+84 ^o M.H. Tap Ok			26897 27944		409 N. Main Rd		1-22-81 12-18-81	
5+00	133.6	124.17	9.4									
6+00	133.6	124.31	9.3									
7+00	134.0	124.45	9.6									
	133.6	124.54	9.1	7+62 ^o 4" stub SW			21922 219307		433 N. Main Rd 429 N. Main Rd		7-1-78 5-14-70	agreement approved by Commissioner 5-12-70 (500 th Sec P2 Rec 65669) 7-1-78
8+00	133.3	124.58	8.7									
9+00	134.1	124.72	9.4									
10+00	133.7	124.86	8.8									
	133.1	124.95	8.2	10+84 ^o								
11+00	132.9	125.00	7.9									
12+00	133.8	125.13	8.7									
13+00	133.5	125.27	8.2									
	132.9	125.42	7.9	14+06 ^o ← #22246 501 N. Main 12-16-88 M.H. Tap OK 12/16/88								
15+00	134.0	125.54	8.4									
	134.8	125.68	9.1	15+98 ^o								
16+00	134.8	125.68	9.1									
17+00	135.3	125.82	9.5									
18+00	134.1	125.95	8.2									
	133.8	126.01	7.8	18+36 ^o								
19+00	134.2	126.09	8.1									
20+00	134.2	126.23	8.0									
21+00	134.3	126.37	7.9									
	134.5	126.43	8.1	21+49 ^o								
22+00	134.4	126.50	7.9									
23+00	134.4	126.64	7.8									
24+00	134.6	126.78	7.8									
	135.0	126.88	8.1	24+72 ^o								
25+00	135.1	126.91	8.2									
26+00	135.7	127.07	8.6									
27+00	137.1	127.19	10.5									
	140.3	127.32	13.0	28+02 ^o								
29+00	140.0	127.46	12.5									
30+00	136.2	127.60	8.6									
31+00	135.4	127.74	7.7									
	135.1	127.77	7.3	31+22 ^o								
32+00	134.8	127.87	6.9									
33+00	134.6	128.01	6.6									
34+00	135.0	128.15	6.8									
	136.2	128.22 out 128.22 in	8.0	34+47 ^o								
35+00	135.1	128.28	6.8									
36+00	134.8	128.42	6.4									
	135.3	128.56	6.7	36+96 ^o								
38+00	135.6	128.69	6.9									
39+00	136.1	128.83	7.3									
	136.0	128.90	7.1	39+47 ^o								
40+00	136.1	128.97	7.1									
41+00	136.3	129.11	7.2									
42+00	136.4	129.24	7.2									
	136.4	129.28	7.1	42+22 ^o								
43+00	136.8	129.38	7.4									
44+00	137.1	129.52	8.2									
	137.9	129.62	8.3	44+72 ^o								
45+00	137.8	129.65	8.1									
46+00	139.0	129.79	7.2									
47+00	140.7	129.93	10.8									
	140.8	129.96	10.8	47+21 ^o								
48+00	141.0	130.06	10.9									
49+00	142.1	130.20	11.9									
	143.5	130.32	13.2	49+85 ^o								
50+00	142.8	130.34	12.5									
51+00	141.3	130.48	10.8									
52+00	142.2	130.61	11.6									
	143.5	130.75	12.7	52+98 ^o								
54+00	142.0	130.89	11.1									
55+00	140.0	131.02	9.0									
56+00	144.1	131.16	12.9									

CONSTRUCTION RECORD						
STATION	ELEVATION		Depth	MANHOLE	4-INCH "Y" BRANCHES	
	Ground	Grade			North West	South East
	144.1	131.19	13.5	56+23 ^o		
57+00	146.6	131.30	15.3			
58+00	148.4	131.43	17.0			
59+00	148.9	131.57	17.3			
	148.9	131.64	17.3	59+47 ^o		
60+00	149.1	131.71	17.4			
61+00	149.7	131.85	17.9			
62+00	149.8	131.98	17.8			
	150.4	132.09	18.3	62+72 ^o		
63+00	150.6	132.12	18.5			
64+00	151.1	132.26	19.4			
65+00	152.2	132.39	19.8			
	153.0	132.53	20.5	65+91 ^o		
66+00						
67+00	152.9	132.67	20.2			
68+00	153.0	132.80	20.2			
	152.9	132.94	20.0	68+96 ^o		
70+00	152.8	133.08	19.7			
71+00	152.3	133.21	19.1			
	149.0	133.35	15.6	71+96 ^o		
73+00	152.6	133.49	19.1			
74+00	153.1	133.63	19.5			
75+00	154.1	133.76	20.4			
	155.4	133.71 out 134.03 in	21.6/21.4	75+09 ^o	see below MHTap 5607 main 1/13/82	
76+00	152.1	134.15	18.5			
77+00	153.6	134.29	19.3			
	153.2	134.43	18.8	77+95 ^o		
79+00	152.4	134.57	17.8			
80+00	151.6	134.71	16.9			
	151.8	134.82	17.0	80+70 ^o		
81+00	151.9	134.85	17.0			
82+00	152.6	134.99	17.6			
83+00	153.6	135.12	18.5			
	154.1	135.19	18.9	83+45 ^o		
84+00	154.8	135.25	19.6			
85+00	155.9	135.37	20.5			
86+00	157.4	135.49	21.9			
	158.1	135.55	22.5	86+41 ^o		
LINE 2	132.9	126.07	6.8	14+06 ^o LINE 1		
	135.5	126.27	9.2	0+00 LINE 2		
				Exist. 0+97 ^o		

#22246 12-16-88 - David Hurrell - 501 N. Main - MHTAP 14+06.4 OK for J.B. Hurrell - (M.H. Tap 4" Abs 40) (Riverside Family Practice) south part