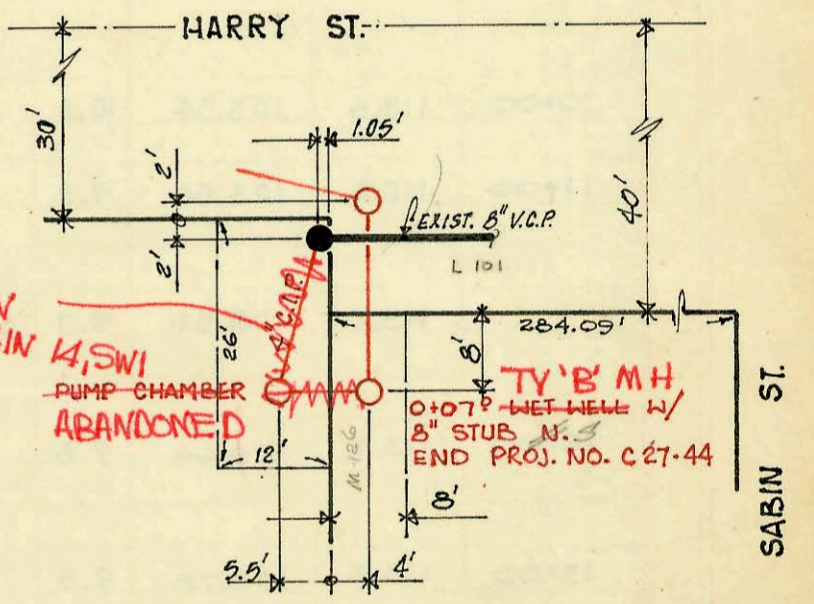
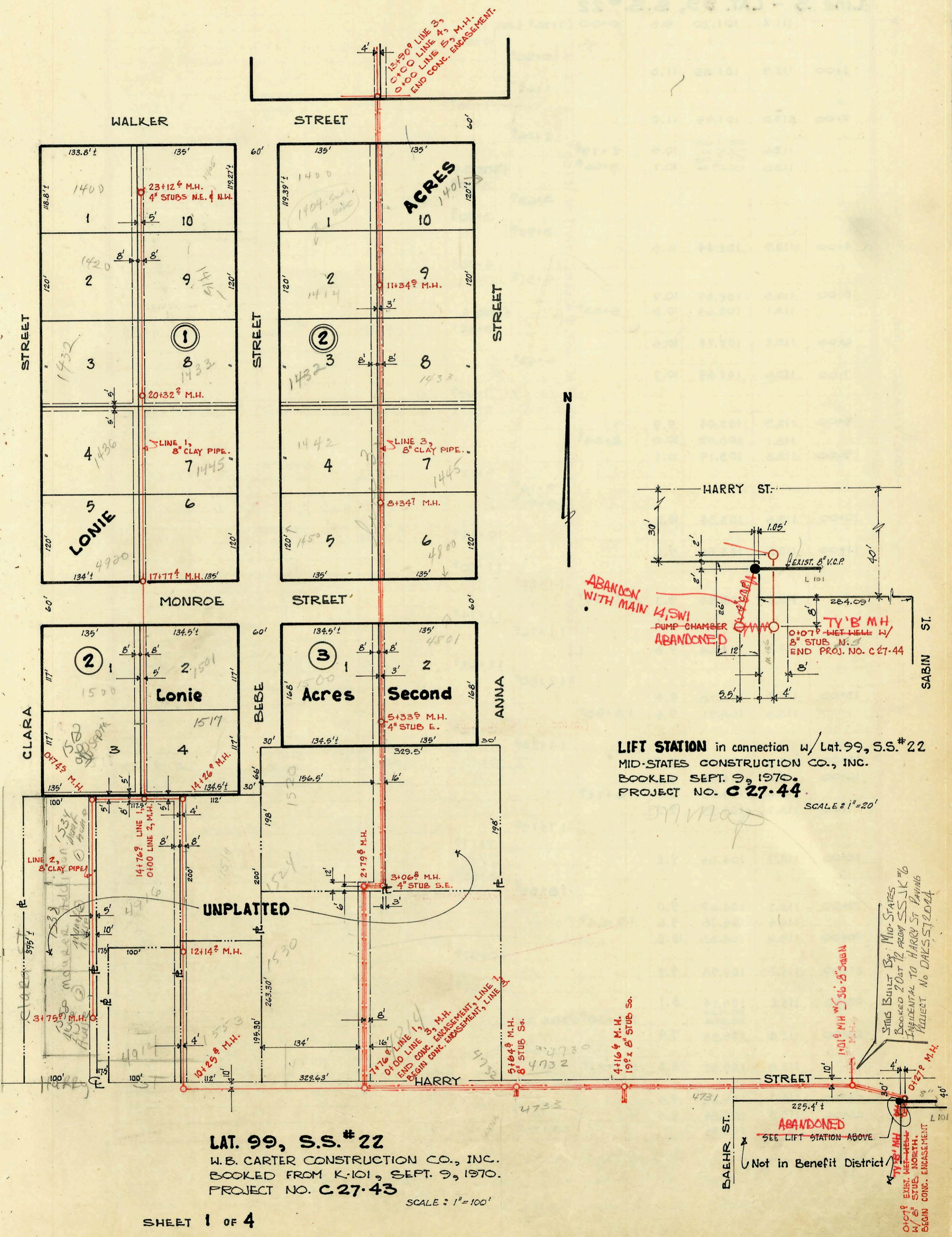


SERVICE RECORD

CONSTRUCTION RECORD



**LIFT STATION** in connection w/ Lat. 99, S.S. # 22  
 MID-STATES CONSTRUCTION CO., INC.  
 BOOKED SEPT. 9, 1970.  
 PROJECT NO. C 27-44.  
 SCALE: 1" = 20'

**LAT. 99, S.S. # 22**  
 W.B. CARTER CONSTRUCTION CO., INC.  
 BOOKED FROM K-101, SEPT. 9, 1970.  
 PROJECT NO. C 27-43  
 SCALE: 1" = 100'

STUB BUILT BY: MID-STATES  
 BOOKED 20' OUT FROM S.S. # 22  
 INCIDENTAL TO HARRY ST. PAVING  
 PROJECT NO. DAKS. 572024

