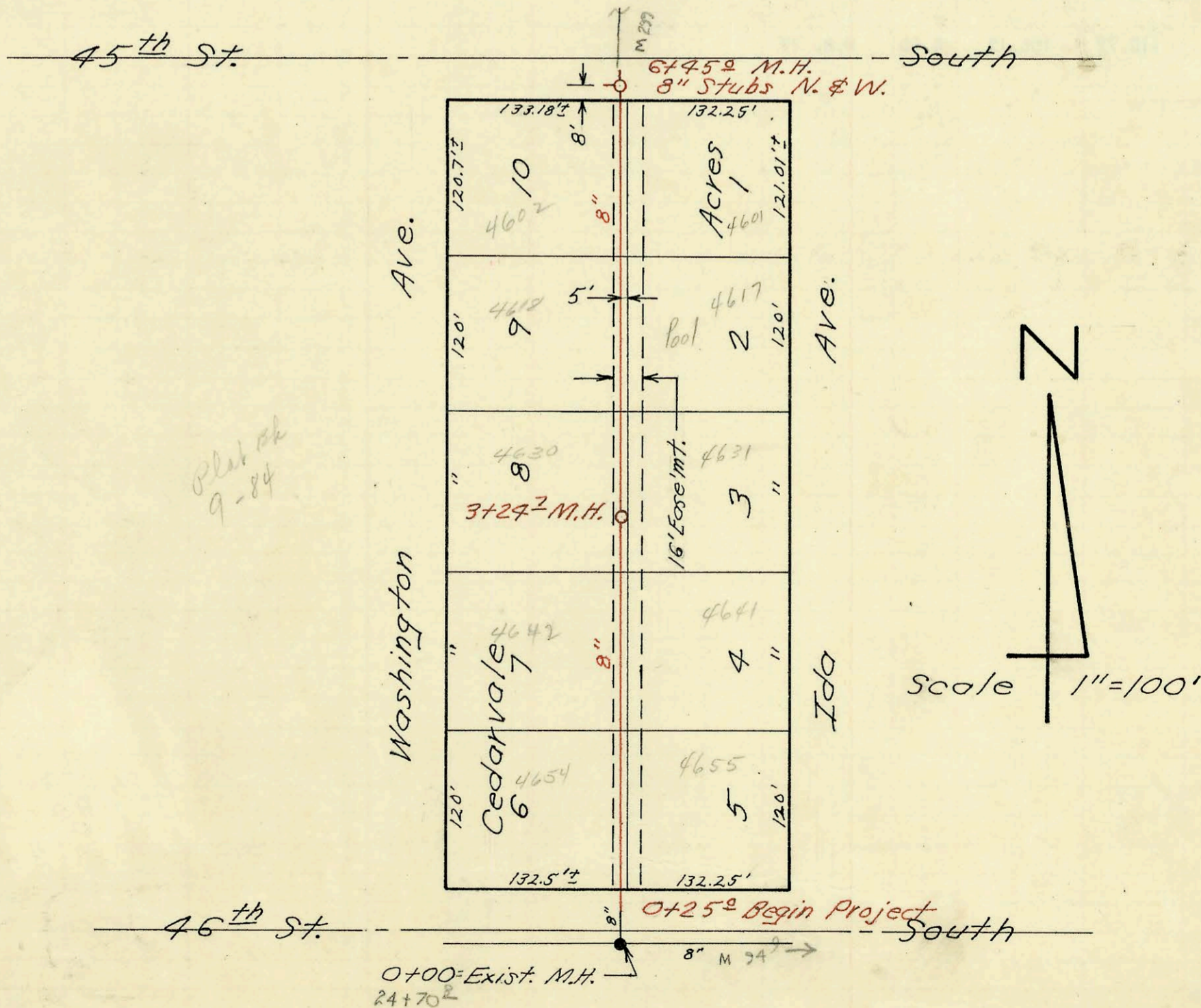
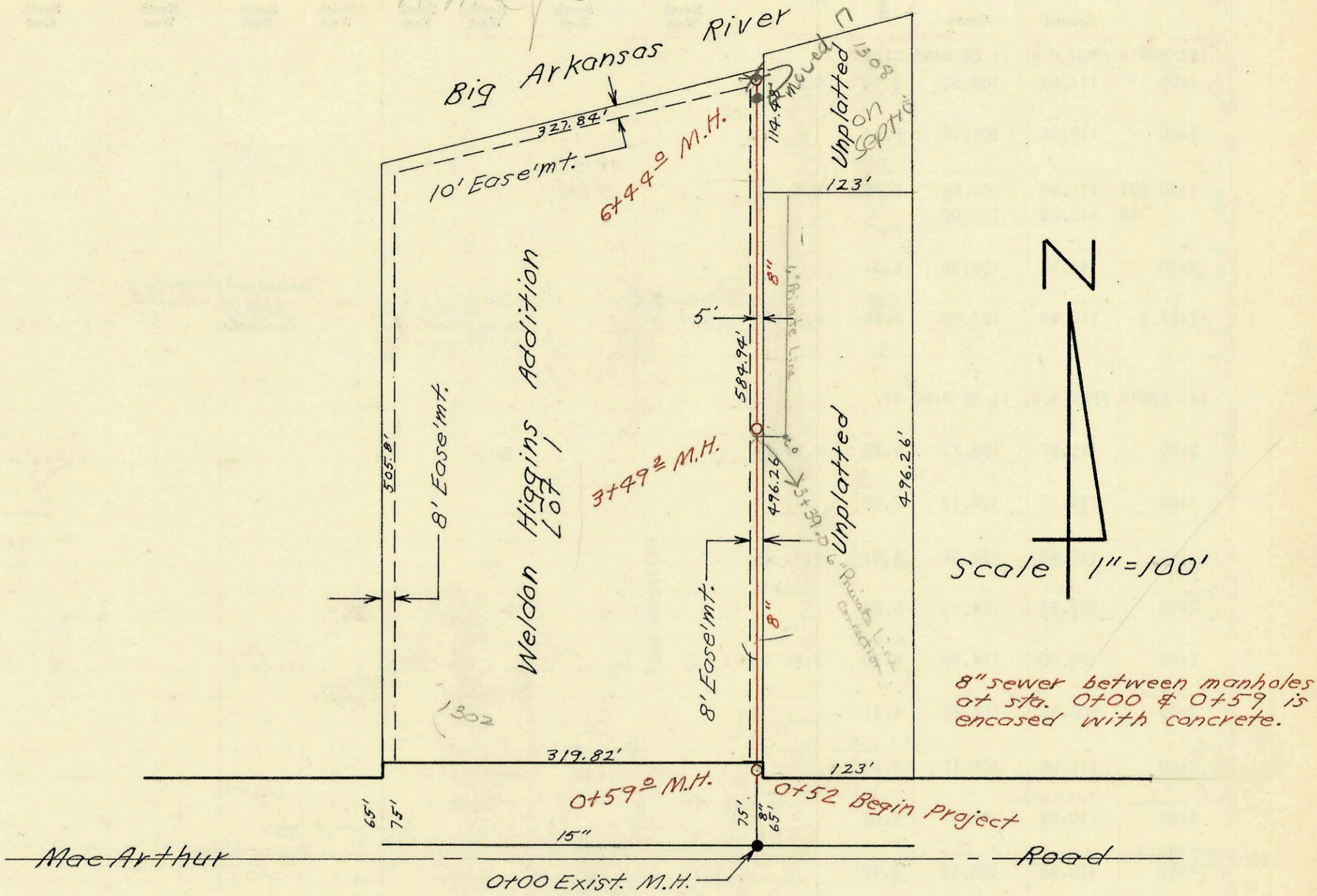


Lat. 1, Sub. 1, S.W. Interceptor  
 Mid-States Const. Co., Inc.  
 Proj. No. C 28-86  
 Booked 11-12-70 Book No. 252-Y

*on map*



*Plot # 9-84*

Lat. 7, Sub. 1, S.W. Interceptor  
 Mid-States Const. Co., Inc.  
 Proj. No. C 20-6  
 Booked 11-12-70 Book No. 259-Y

*on map*

CONSTRUCTION RECORD

SERVICE RECORD

STATION	ELEVATION		Depth	MANHOLE	4-INCH "Y" BRANCHES		No. of Permit		House Number		DATE OF PERMITS		
	Ground	Grade			North West	South East	North West	South East	North West	South East	North West	South East	
Lat. 1, Sub. 1, S.W. Interceptor													
0+00	88.6	73.17 Out 77.02 In	15.4 11.6	0+00 Exist. M.H.									
0+52	86.9	77.12 77.13 Out 80.57 In	9.8 6.4	0+52 Begin Project									
1+00	86.9	80.60	6.3										
2+00	86.9	80.80	6.1										
3+00	87.0	81.00	6.0										
4+00	86.9	81.20	5.7	3+492	3+39.0	3+94.5	10443		1302 MacArthur	1302 E MACARTHUR	3-9-84 TRAVER # 6	11-17-71	
5+00	87.2	81.40	5.8										
6+00	88.1 89.0	81.60 81.69	6.5 7.3	5+87 Trapped	5+45	6+32	C21469		1302 E MacArthur	1302 E MacArthur	10-23-70		
				6+44	6+40		C55634		1302 E MacArthur	1302 E MacArthur	5-21-76		
<p>This trunk line abandoned with Levee project - MH 6+44 moved 17' S. and the TRUNK line was not reconnected. BSL - see E-mail attch</p>													
Lat. 7, Sub. 1, S.W. Interceptor													
0+00	82.6	75.41 Out 75.51 In	7.2 7.1	0+00 Exist. M.H.									
0+25	Begin Project				0+47.5	0+45.5	C30184	C28298	4654 Washington	4655 Ida	1-26-72	9-29-71	
1+00	82.9	75.71	7.2										
2+00	82.7	75.91	6.8		2+11.5	2+88	C22074		4641 Ida			12-7-70	
3+00	83.7	76.11	7.6		2+90	2+88	C37361		4642 S Washington		2-22-73		
4+00	84.0	76.31	7.7	3+24	3+19.7	4+22	26364		4631 Ida		5-25-79	8-11-71	
5+00	83.8	76.51	7.3	4+21	4+22	4+87	2002-00037 C23952	C22050	4618 SR Washington	4617 S Ida	1-4-02	4-27-71	12-3-70
6+00	84.0 84.0	76.71 76.80	7.3 7.2		5+52.5	5+55	C22075	C22049	4602 S Washington	4601 S Ida	12-7-70	12-3-70	
6" Private Line - 3+39.0 tap into 8" City line													
10490	1302 E MacArthur	#1	3-19-84	Mike Dick	4' N of Private Line C.O.								
10491	1302 E MacArthur	#2	3-19-84	"	4' N of Private Line C.O.								
10492	"	#3	"	"	8' N " " " "								
10493	"	#4	"	"	11' N " " " "								
10494	"	#5	"	"	17' N " " " "								
10495	"	#6	"	"	21' N " " " "								
2002-00037 14102 4618 S Washington - AE Henning - 97' N of MH 3+24.7 (4+21.7) Tied back to Wye w/donut 4" S4440 PVC, 2H45, 1H22, 1V22													

C54995 - 1320 E MacArthur - 4-27-76 - New Conn. - Trailer  
 C54997 - " " " " " "  
 C54998 - " " " " " "  
 C54999 - " " " " " "

#91-31080-7 8/28/91 - 1302 E MacArthur - Dick - ( )  
 Lots 94-99 tap 122.5' N of MH (1+74.5) 6" SDR 35