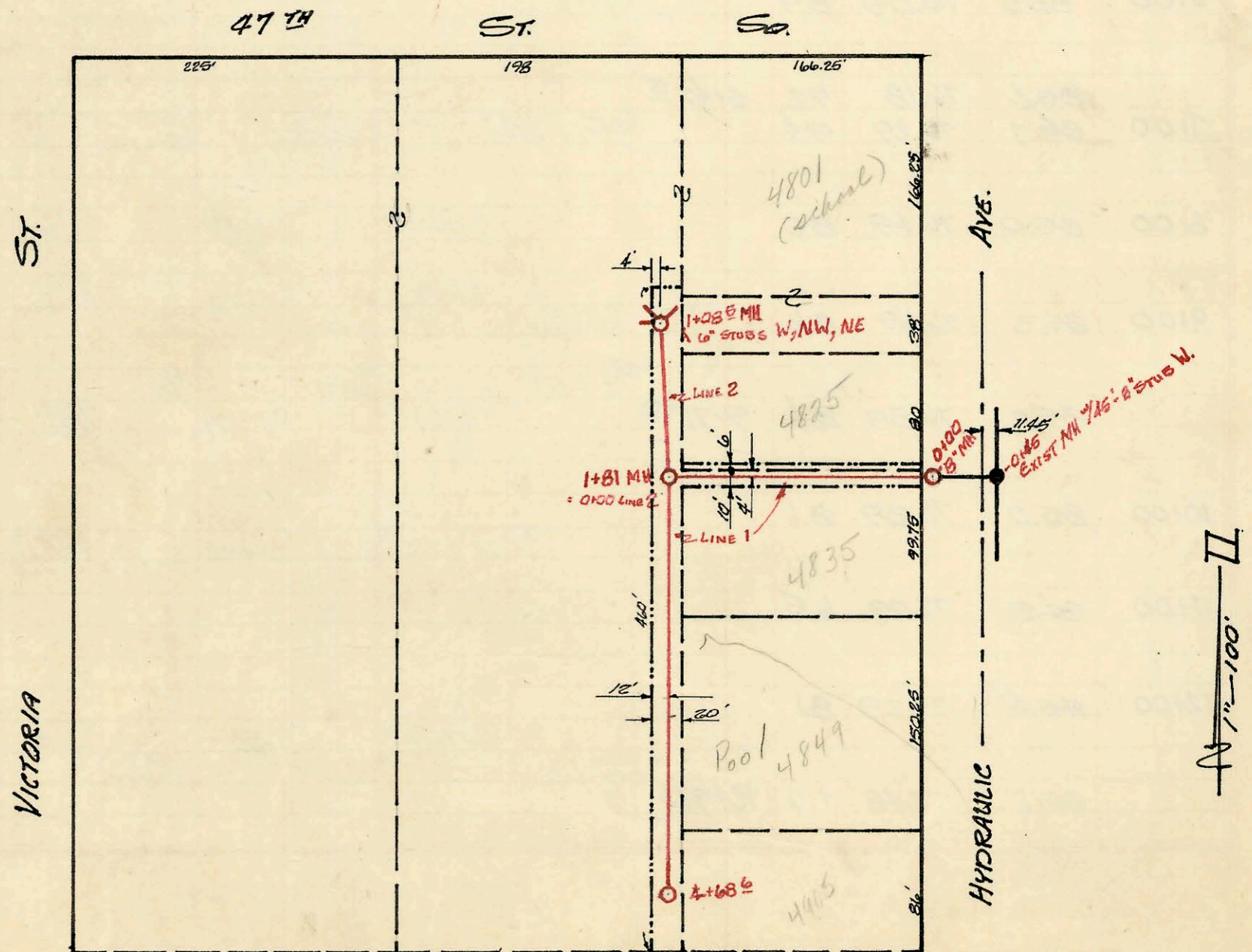
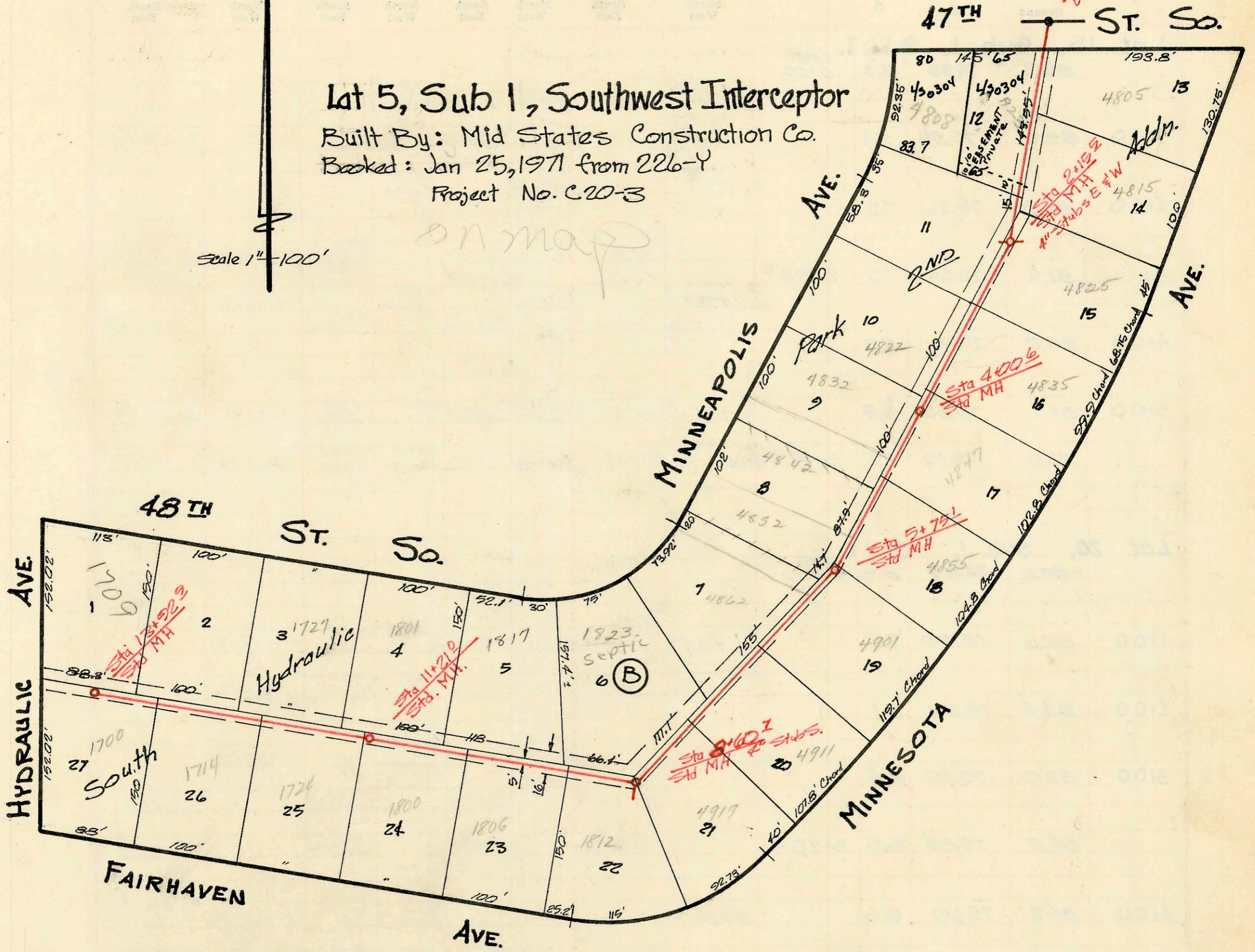


Lat 5, Sub 1, Southwest Interceptor
 Built By: Mid States Construction Co.
 Booked: Jan 25, 1971 from 226-Y
 Project No. C20-3

on map



LAT 10, SUB 1, S.W.I
 BUILT BY W. B. CARTER CONST. CO. INC.
 BOOKED 15 JUL 71 FROM IM-04
 Proj No DBKL 570038

CONSTRUCTION RECORD

SERVICE RECORD

STATION	ELEVATION		Depth	MANHOLE	4-INCH "Y" BRANCHES		No. of Permit		House Number		DATE OF PERMITS	
	Ground	Grade			North West	South East	North West	South East	North West	South East	North West	South East
0+00	83.45	74.50	8.95	Exist MH (Stub Removed & Flo in lowered)								
1+00	84.7	74.70	10.0		0+51 ⁰			C32096	4805 S			5-9-72
2+00	84.2	74.90	9.3		1+19	1+34 ⁰		C61390	1923 E.			12-22-77
2+00	84.3	74.93	9.4	2+15 ⁰	1+67.9	1+34 ⁰		C61388	4766 S.	4815 S.		12-9-77
3+00	83.4	75.10	8.3		4" stub E & W			C46549	4825 S.			9-10-74
4+00	83.5	75.30	8.2	4+00 ⁰				C67874	4822 S.			8-16-78
4+00	83.5	75.30	8.2	4+00 ⁰	3+28 ⁰	3+50		C31854	4835 S.			4-26-72
5+00	84.2	75.50	8.7		4+43.6	4+16 ⁰		C61164	4842 S.			5-16-77
5+00	84.2	75.50	8.7		4+18 ⁰			C57801	4822 S.			9-21-70
5+00	84.1	75.65	8.5	5+75 ⁰	5+15 ⁰	5+17 ⁰		C475737	4842 S.			4-15-77
6+00	83.9	75.70	8.2		5+87.1	5+95 ⁰		C23294	4855 S.			9-2-76
6+00	83.9	75.70	8.2		5+87.1	5+95 ⁰		C42571	4901 S.			9-21-76
7+00	84.6	75.90	8.7		6+32 ⁰			C57803	4822 S.			9-21-76
8+00	83.9	76.10	7.8		7+33.6	7+34 ⁰		C56749	4911 S.			7-16-76
8+00	83.6	76.32	7.3	8+60 ⁰	8+01 ⁰			C59122	4919 S.			1-26-77
9+00	83.4	76.40	7.0	4" stub South	2+72.7			10170	1810 S.			2-10-84
9+00	83.4	76.40	7.0		9+69 ⁰			8345	1806 S.			6-13-83
10+00	83.2	76.60	6.6		9+73			C61651	1817 E.			6-16-77
10+00	83.2	76.60	6.6		10+02.7	10+53		C22606	1809 S.			1-19-71
11+00	83.0	76.80	6.2		10+85			C41102	1801 E.			9-6-73
11+00	82.9	76.84	6.1	11+21 ⁰				C22604	1727 E.			1-19-71
12+00	83.0	77.00	6.0		11+52 ⁰	11+54 ⁰		C22718	48 th St. S.			1-26-71
12+00	83.0	77.00	6.0		12+68 ⁰	12+46 ⁰		C22605	1714 S.			1-19-71
13+00	82.9	77.20	5.7		13+64 ⁰			17141	1709 S.			10-16-86
13+00	83.1	77.38	5.7	13+92 ⁰	13+66 ⁰							
LAT 16, SUB 1, S.W. I.												
LINE 1												
-0+45				EXIST MH 45'-8" STUB W								
0+00	82.6	74.77	7.8	0+00								
1+00	84.2	75.77	9.0		1+05 ⁰			C32678	4825 S.			6/6/72
1+00	84.2	75.59	8.6	1+81 = 0+00 LINE 2	1+03 ⁰			C32679	4835 S.			6/6/72
2+00	84.0	75.67	8.0									
3+00	83.8	76.07	7.2		3+44 ⁰			C32680	4849 S.			6/6/72
4+00	83.4	76.47	6.9		4+64 ⁰			C32681	4905 S.			6/6/72
4+00	83.0	76.75	6.3	4+68 ⁰								
LINE 2												
0+00	84.2	75.59	8.6	0+00 = 1+81 LINE 1								
1+00	84.7	76.00	8.7					C33493	4801 S.			7-11-72
1+00	84.7	76.04	8.7	1+08 ⁰	0" stub W, NW, NE			C28397	4801 S.			10-4-71
1+00	84.7	76.04	8.7	1+08 ⁰				C33492	4801 S.			7-11-72