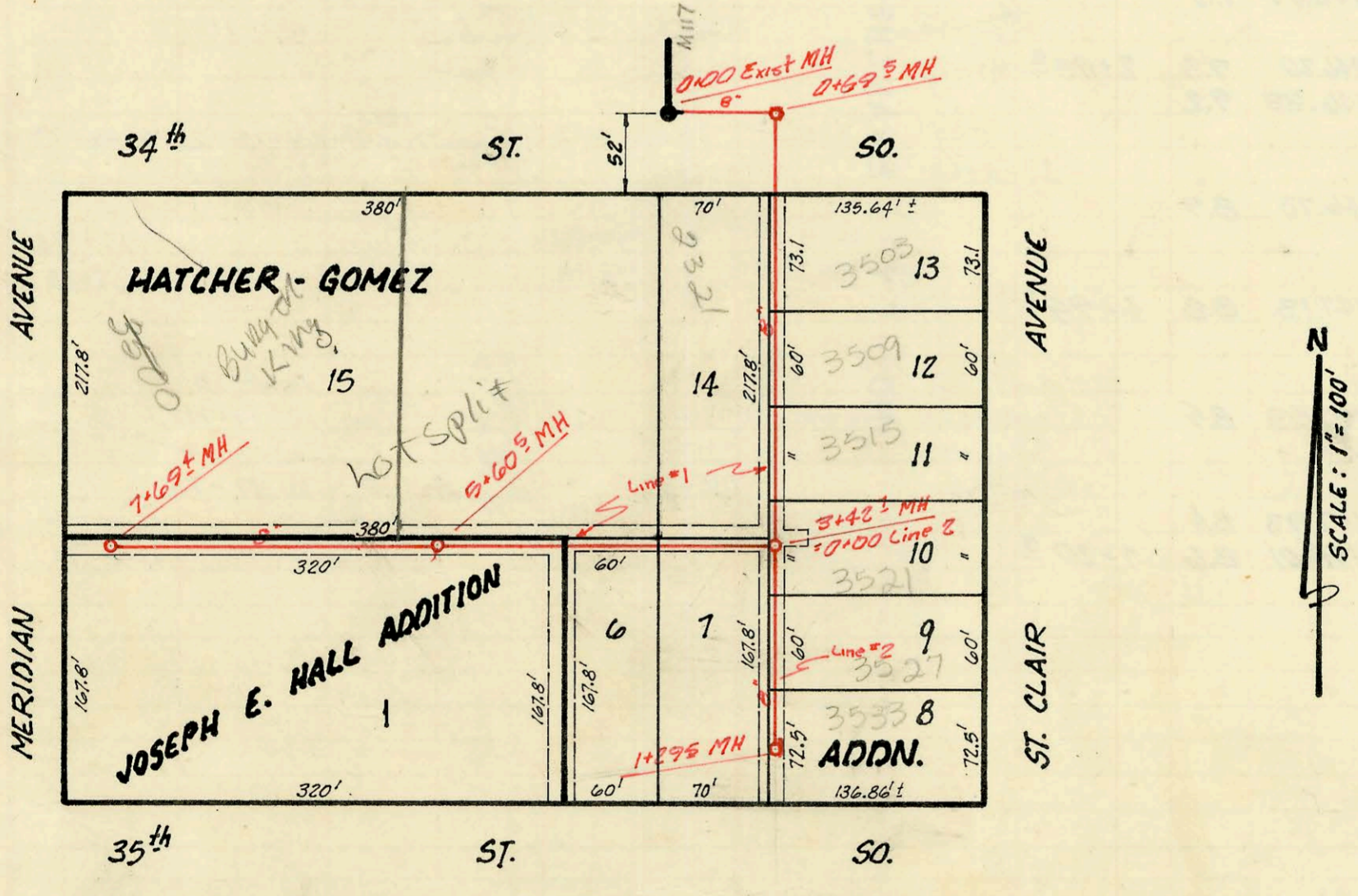


Lat. 19, Sub. 1, S.W.I.
 MID-STATES CONSTRUCTION COMPANY, INC.
 BOOKED APRIL 6, 1971 FROM PLAN K-87
 PROJECT NO. C 20-44



Lat. 30, Sub. 3, S.S. NO. 22
 W. B. CARTER CONSTRUCTION CO., INC.
 BOOKED: March 2, 1971 From K-101
 PROJECT NO. C 29-49

CONSTRUCTION RECORD						SERVICE RECORD						
STATION	ELEVATION		Depth	MANHOLE	4-INCH "Y" BRANCHES		No. of Permit		House Number		DATE OF PERMITS	
	Ground	Grade			North West	South East	North West	South East	North West	South East	North West	South East
Lat. 19, Sub. 1, S.W. 1. EXIST. 0+00 MH 15' STUB S. top												
	84.6	74.49	10.1		0+82	0+83.2	074391	030884	1509 S. 464	4703 Victoria	9-19-79	3-9-72
1+00	84.2	74.89	9.3		1+47.2 top	1+83.5	033630	030950	4712 S. 4717 Victoria	10390	7-17-72	3-13-72
2+00	84.3	75.29	9.0		2+71.2	2+69.2 top	059964		4726 S. 4725 Victoria		2-4-77	
3+00	84.1 84.0	75.65 75.69	8.4 8.3	2+89.8	3+75.8		061971	12723	4723 Victoria		7-11-77	1-14-85
4+00	83.9	76.09	7.8		4+31.2		031233		4740 S. 4749 Victoria		3-28-72	
5+00	84.2 84.4	76.49 76.69	7.7 7.7	5+50.2 4" stub W.	5+32.4		02309	071670	4756 S. 4755 S. 4756 S. Victoria		1-8-81 1-8-81	5-9-79
Lat. 30, Sub. 3, S.E. NO. 22 LINE 1 EXIST. 0+00 0+69.5												
	96.3	89.37	6.9									
1+00	95.2	89.67	5.5		1+79.5 top	1+56.9 top	066918		3503 S. St. Clair			6-20-78
2+00	94.9	89.87	5.0		2+43.1 top	2+88.6 top	17339	066919	0321 W. 34th S. 3515 S. St. Clair		11-21-86	6-20-78
3+00	94.8	90.07	4.7				066920					6-20-78
	94.5	90.16	4.3	3+42.1 = 0+00 Line #2								
4+00	95.4	90.37	5.0									
5+00	95.1	90.57	4.5									
	94.8	90.69	4.1	5+60.5								
6+00	94.8	90.77	4.0									
7+00	95.3	90.97	4.3				076957		3500 R. S. W. Victoria		5-19-84	
	95.6	91.11	4.5	7+69.5	7+59.7 top		12049					
LINE 2 0+00												
	94.5	90.26	4.2		0+11.4		066921		3521 S. St. Clair			6-21-78
					0+67.9		066922		3527 S. St. Clair			6-21-78
1+00	95.1	90.56	4.5									
	94.8	90.65	4.2	1+29.5	1+24.5		066923		3533 S. St. Clair			6-21-78