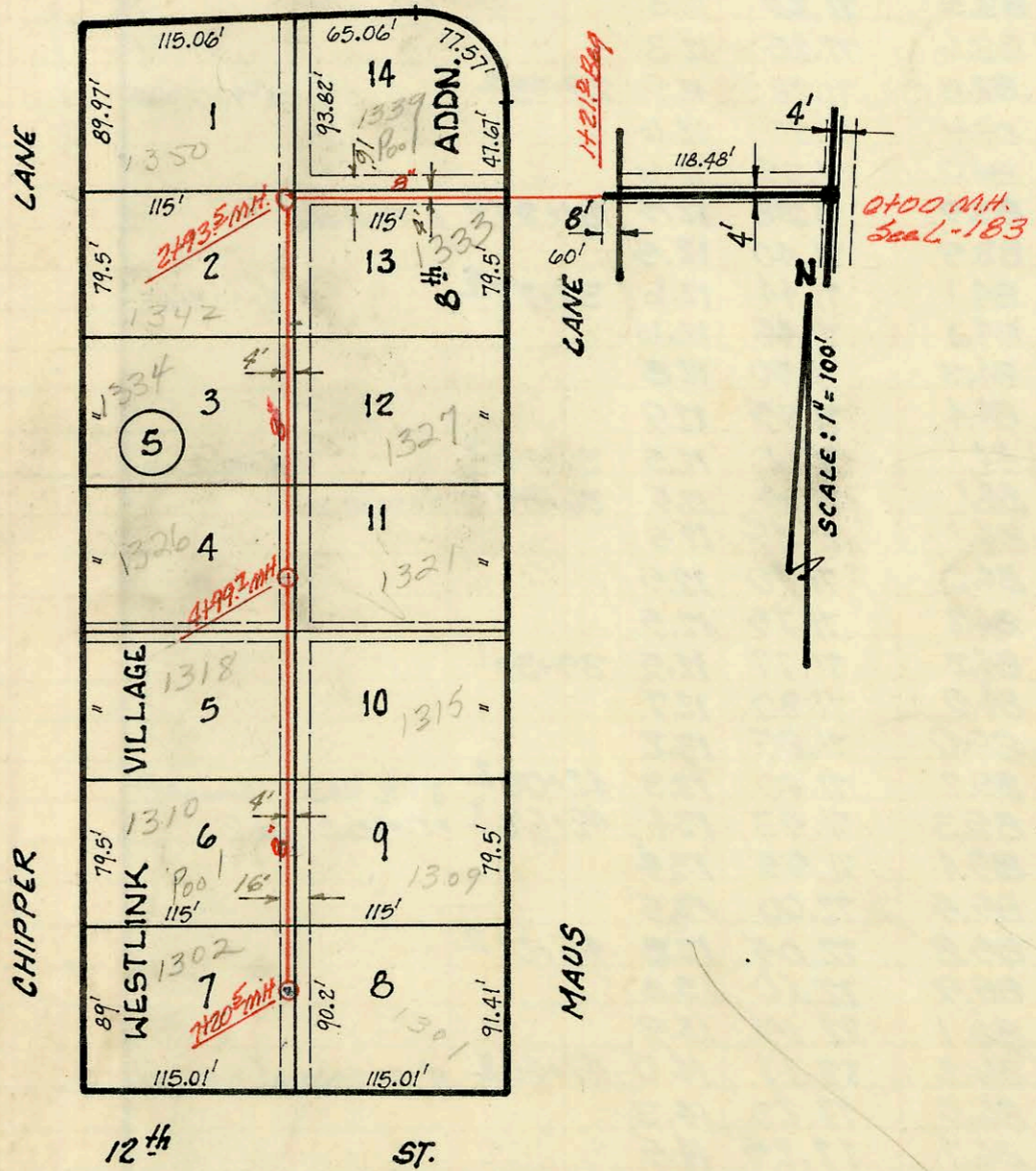


Lat. 32, Sub. 3, S.S. No. 22
 W. B. CARTER CONSTRUCTION COMPANY, INC.
 BOOKED: March 2, 1971 from K-101
 PROJECT NO. C20-52



Lat. 36, Westlink Sewer
 W. B. CARTER CONSTRUCTION CO., INC.
 BOOKED March 2, 1971 from K-87
 PROJECT NO. C28-19

