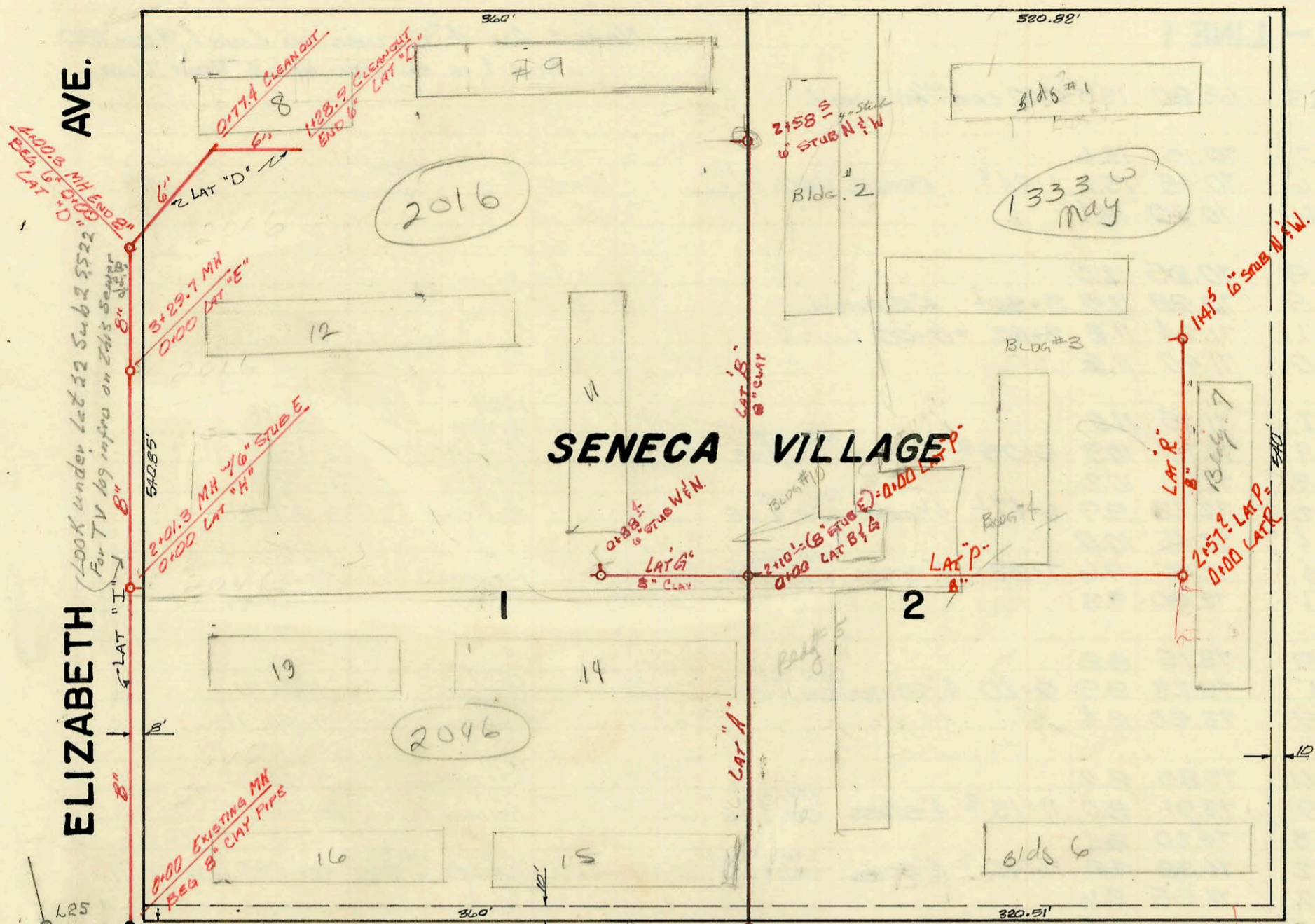


MAY

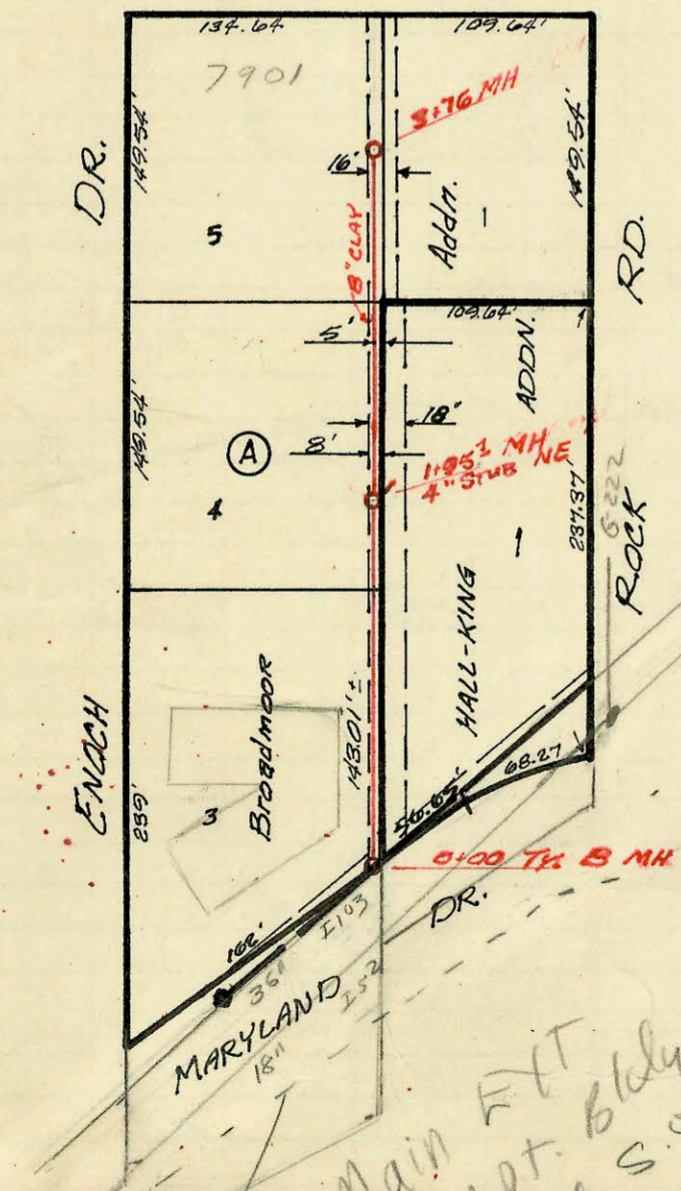
AVENUE



1333 W May  
 Bldgs 1, 3, 4, 5, 6, 7  
 2016 S. Elizabeth  
 Bldgs 2, 8, 9, 10  
 11, 12  
 2046 S. Elizabeth  
 13, 14, 15, 16

**PRIVATE SEWER FOR  
 SENECA VILLAGE TOWNHOUSES**  
 BUILT BY: ALLIED UTILITIES  
 BOOKED: 1 APRIL 71 from SS#11 JAK.  
 LAT P & LAT R BOOKED 6 DEC 71 FROM SS#1 JK  
 PROJECT No AAKB 502051  
 on map

LINCOLN ST.



LAT 4B, W.I.S.  
 BUILT BY: W.B. CARTER Const. Co. Inc.  
 BOOKED 13 MAY 71 from 2404  
 PROJ. No. DBKL 570056  
 on map

Require Main EXT  
 Fix prep. Apt. Bldg  
 to be located S. of  
 18" main - see  
 atld F main  
 4/30/03  
 BK

60  
 4  
 of  
 on  
 map

CONSTRUCTION RECORD						SERVICE RECORD						
STATION	ELEVATION		Depth	MANHOLE	4-INCH "Y" BRANCHES		No. of Permit		House Number		DATE OF PERMITS	
	Ground	Grade			North West	South East	North West	South East	North West	South East	North West	South East
<b>LAT "I"</b>												
0+00	101.1	94.68	6.4	0+00 EXIST. MH Beg B"								
1+00	102.2	95.08	7.1									
2+00	102.5	95.48	7.0	2+01.3 1/6" stub E = 0+00 LAT "H"			C28849		2046 S. Elizabeth		11-3-71	
3+00	102.8 103.0	95.88 96.00	6.9 7.0	3+29.7 6" stub NE = 0+00 LAT "E"			C28848		2016 S. Elizabeth		11-3-71	
4+00	103.1	96.28	6.8	4+00.3 = 0+00 LAT "D" End B"			C22687		2016 S. Elizabeth		1-26-71	
<b>LAT "D"</b>												
0+00	103.1	96.38	6.7	0+00 = 4+00.3 LAT "I" Beg G"								
1+00	104.0 104.2 104.4	97.15 97.38 97.67	6.9 6.8 6.7	0+77.4 CLEANOUT 1+28.9 CLEANOUT END G"								
<b>LAT "A"</b>												
0+00	102.1	95.23	7.5	0+00 OVER EXIST. B LINE NE			C36378		1335 May Bldg #51		12-18-72	
1+00	103.2	95.87	7.3				C36377		1333 May		12-18-72	
2+00	104.0 104.0	96.51 96.57	7.5 7.4	2+10.4 = 0+00 LAT B 1/4 B" stub E			C36375 C36376 C35738		1333 May		12-18-72 12-18-72 12-18-72	
<b>LAT "B"</b>												
0+00	104.0	96.57	7.4	0+00 EXIST = 2+10.4 LAT A			C35259		1333 May Bldg #2		10-6-72	
1+00	104.4	97.26	7.1				C39557 C39556 C39555		1333 May Bldg #2		6-18-73 6-18-73 6-18-73	
2+00	104.4 103.8	97.95 98.36	7.4 5.4	2+58.8 6" stub N 1/2 W			C39554 C31942		1333 May Bldg #2 2016 S. Elizabeth		6-18-73 5-1-72	
<b>LAT "G"</b>												
0+00	104.0	96.57	7.4	0+00 EXIST = 2+10.4 LAT A			C31938		2046 S. Elizabeth		5-1-72	
	102.2	98.25	4.0	0+38.4 6" stub N 1/2 W			C31939 C29052		2046 S. Elizabeth		5-1-72 11-17-71	
							C31940 C31941		2046 S. Elizabeth		5-1-72 5-1-72	
<b>LAT "P"</b>												
0+00	104.1	96.97	7.1	0+00 EXIST. MH 6" stub E.								
1+00												
2+00	104.0	98.30	5.7	2+57.2 = 0+00 LAT "R"			C35260 C38167		1333 May Bldg #4		10-6-72	
<b>LAT "R"</b>												
0+00	104.0	98.30	5.7	0+00 = 2+57.2 LAT "P"			C38166		1333 May Bldg #7		4-9-73	
1+00	103.8	98.87	9.9	1+41.5 1/6" stub N 1/2 W			C38165 C35257 C38164		1333 May Bldg #1		4-9-73 10-6-72 4-9-73	
<b>LAT AB, W.I.S</b>												
0+00	139.1	126.00	13.1	0+00 Type B								
1+00	138.5	127.50	11.0									
2+00	139.1	130.50 IN 129.00 OUT	9.0 10.1	1+95.3 4" stub NE								
3+00	140.2 142.6	132.00 133.20	8.2 9.4	3+76 3" stub NE			C38059 C43210 C29714 C29715		7901 S. Lincoln Bldg #4 7901 E. Lincoln Bldg #3 7901 E. Lincoln Bldg #1 7901 E. Lincoln Bldg #2		10-6-76 1-29-74 12-28-71 12-28-71	

C24448-931 S. Rock Road - 5-19-71 - Joe Spaulding top (2+47.3)  
 C24449-935 " " " " " " top (2+34.7)  
 C24450-943 " " " " " " top (1+89.7)  
 C24451-955 " " " " " " top (1+15.1)  
 C28403-951 S. Rock Rd 10-5-71 - Joe Spaulding top (1+57.7)