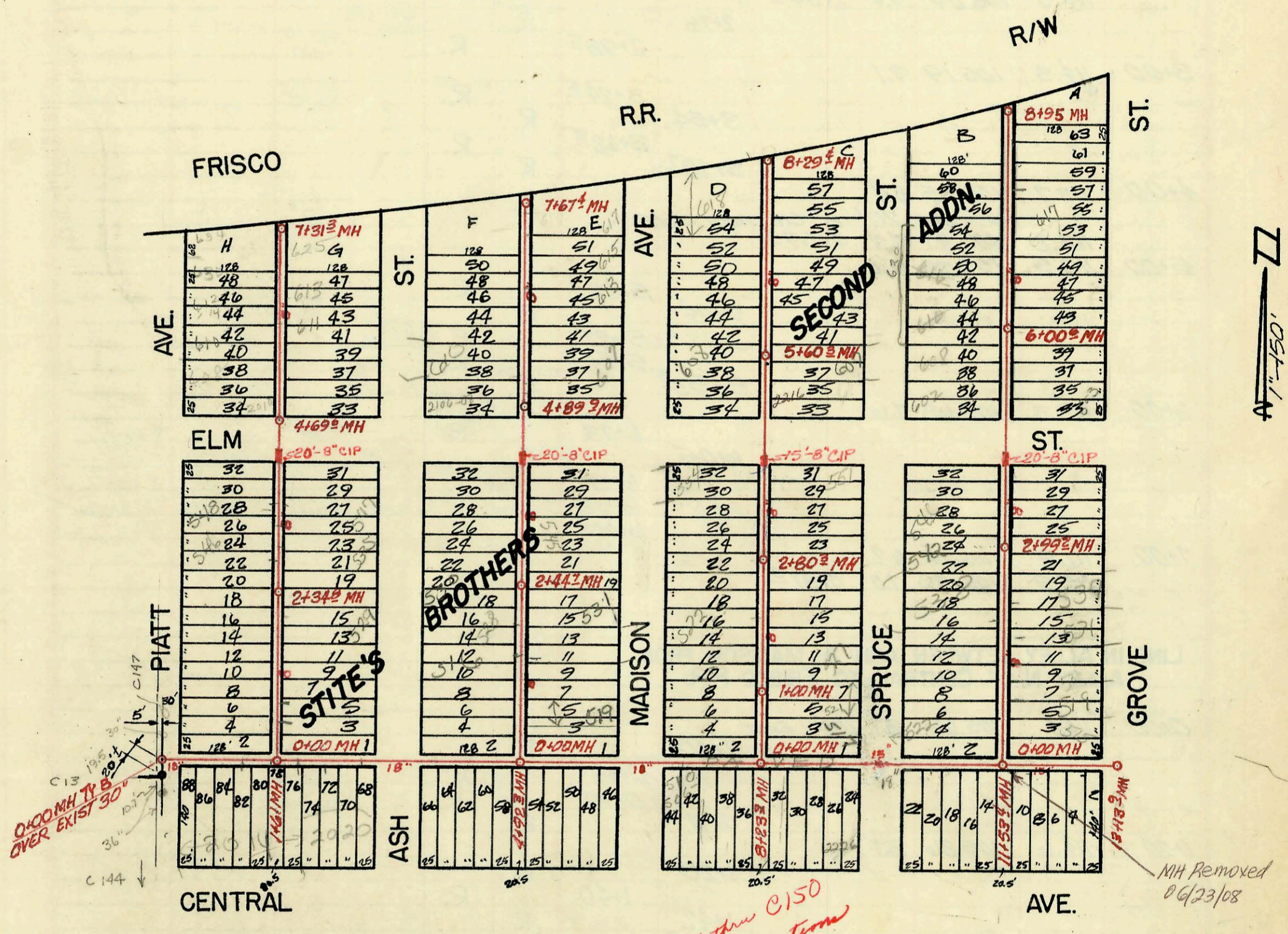


SERVICE RECORD

CONSTRUCTION RECORD



C13 195.3
 0+40.0 MH TV B
 OVER EXIST' 30"
 36"
 C144

ST. SITE'S

BROTHERS

SECOND

ADDN.

See Book C-147 thru C150
 for old sewer connections

MH Removed
 06/23/08

SANITARY SEWER IMPROVEMENTS
 FOR PHASE 1, U.R.A. PROJECT
 CAROL

BUILT BY: MID-STATES CONST. CO.
 BOOKED: 2 JUNE 71 FROM IH-104
 PROJ. NO. N.D.P. KAN. NO. A-5-2

1"=150'

CONSTRUCTION RECORD						SERVICE RECORD						
STATION	ELEVATION		Depth	MANHOLE	4-INCH "Y" BRANCHES		No. of Permit		House Number		DATE OF PERMITS	
	Ground	Grade			North West	South East	North West	South East	North West	South East	North West	South East
LINE IN ALLEY BETWEEN SPRUCE & GROVE FROM ALLEY N. OF CENTRAL TO FRISCO R.R.												
0+00	115.2	107.91	7.3	0+00 EXIST								
					0+20		C31324					
					0+69		C42811	R.	522 N. Spruce	515 Grove	3-5-74	4-3-72
					0+91		205102130	R.	519 Grove			8-28-01
1+00	115.8	108.11	7.7		1+43		50411553	R.	527 N. Grove			4-19-74
					1+46		C26508	R.	524 N. Spruce			8-16-71
					1+71		205102131	R.	531 Grove			8-28-01
					1+94		C31594	R.	538 N. Spruce			4-14-72
					1+94		414	R.				9-21-81
2+00	115.9	108.31	7.7		2+18		205152132	R.	537 Grove			8-28-01
					2+21		44552	R.	538 N. Spruce	531 N. Grove	4-19-74	8-3-84
	116.0	108.51	7.5	2+99	4" STUB E & W		10844	R.				
3+00	116.0	108.51	7.5		3+20			R.				
					3+28			R.				
					3+63			R.				
					3+81			R.				
4+00	115.9	108.71	7.2	4+07 BEG 20'-8" CIP THRU S.W.S.	4+67		205152181	R.	602 Spruce			12-6-04
					4+76			R.				
5+00	115.8	108.91	6.9		5+18			R.				
					5+65		331319	R.	616 N. Spruce			4-3-72
6+00	116.0	109.11	6.9	6+00	6+10			R.				
					6+48		C24610	R.	616 N. Spruce			6-1-71
					6+50			R.				
7+00	115.9	109.31	6.6		7+00			R.				
					7+51			R.				
					7+53			R.				
					7+75		4449	R.				11-16-81
8+00	115.7	109.51	6.2		8+54		4467	R.				11-16-81
					8+78		C47798	R.	634 N. Spruce			10-23-73
	115.6	109.70	5.9	8+95								

SEE NOTE AT BOTTOM OF M-133

