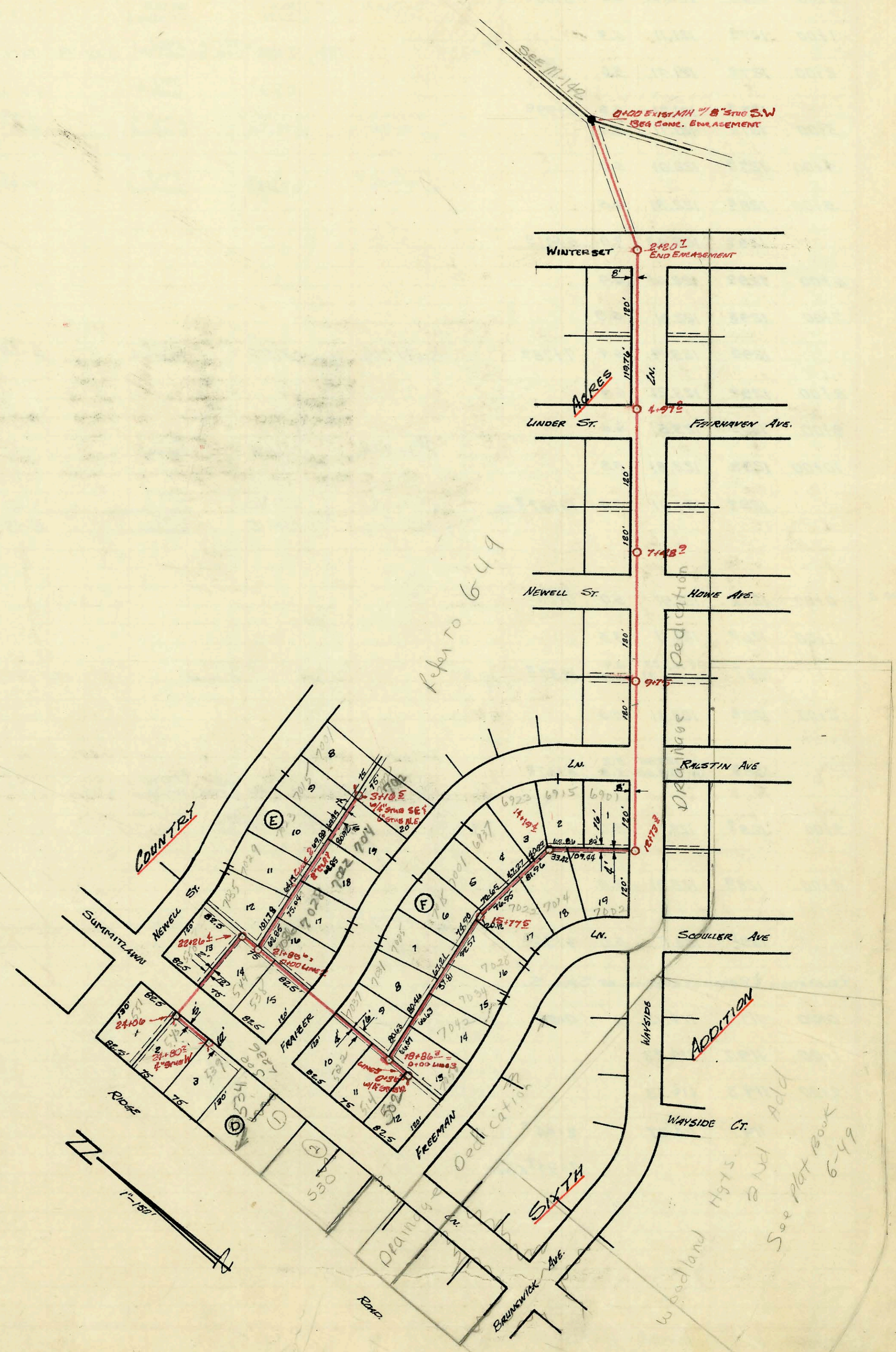


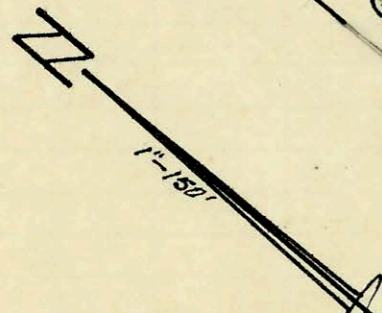
SERVICE RECORD

CONSTRUCTION RECORD



Refer to 6-49

See plat Book 6-49



LAT 40, S.W.I.
 BUILT BY Allied Utilities Inc.
 BOOK 50 5ANA 71 FROM K-1013
 PRIVATE PROJECT

CONSTRUCTION RECORD

SERVICE RECORD

STATION	ELEVATION		Depth	MANHOLE	4-INCH "Y" BRANCHES		No. of Permit		House Number		DATE OF PERMITS	
	Ground	Grade			North West	South East	North West	South East	North West	South East	North West	South East
LINE 1												
0+00	121.5	112.50	9.0	EXIST. 0+00 1/8" STUB S.W. (BEG ENCASEMENT)								
1+00	121.7	113.20	8.5									
2+00	124.1	113.90	10.2									
	124.5	114.14 IN 114.04 OUT	10.5	2+20 1/2 (END ENCASEMENT)								
3+00	124.3	114.70	9.6									
4+00	123.9	115.40	8.5									
	124.3	117.89 IN 116.09 OUT	8.2	4+97 1/2								
6+00	124.6	118.91	5.7									
7+00	126.4	119.91	6.5									
	127.4	120.41	7.0	7+48 1/2								
8+00	129.8	120.91	8.9									
9+00	134.4	121.91	12.5									
	139.8	126.62 IN 122.66 OUT	17.1	9+75								
10+00	138.7	126.70	12.0									
11+00	137.8	127.40	10.4									
12+00	139.6	128.10	11.5									
	141.0	128.72 IN 128.62 OUT	12.4	12+75 1/2	4" S.C.H. 40 P.V.C. 13+10 1/2			94-12558-7 C26613	6901 5/6 7002 R	8-24-94-36 8-18-71		11-12-91
13+00	140.5	128.80	11.7		13+85 1/2	13+37 1/2		94-10560-7 C26612	7002 R 7002 R	8-18-71 8-18-71		8-18-71
14+00	140.7	129.00	11.7		14+44 1/2			94-10560-7 C26611	7002 R 7002 R	8-18-71 8-18-71		11-12-91
	141.0	129.05	12.0	14+19 1/2	14+77 1/2	13+93 1/2		94-10560-7 C26610	7002 R 7002 R	8-18-71 8-18-71		8-18-71
16+00	142.1	129.30	12.0		15+41 1/2			94-10560-7 C26609	7002 R 7002 R	8-18-71 8-18-71		8-18-71
	142.9	129.54 IN 129.46 OUT	13.4	15+77 1/2	16+01 1/2	4" STUB SE		94-10560-7 C26608	7002 R 7002 R	8-18-71 8-18-71		8-18-71
16+00	143.1	129.60	13.5		16+86 1/2	16+34 1/2		94-10560-7 C26607	7002 R 7002 R	8-18-71 8-18-71		8-18-71
17+00	144.1	129.80	14.3		17+63 1/2	17+21 1/2		94-10560-7 C26606	7002 R 7002 R	8-18-71 8-18-71		8-18-71
18+00	144.9	130.00	14.9		18+30 1/2	17+80 1/2		94-10560-7 C26605	7002 R 7002 R	8-18-71 8-18-71		8-18-71
	145.6	130.28	15.3	18+86 1/2 = 0+00 LINE 3				94-13115-7 C26428	522 R Summitlaw	8-17-94 8-12-71		
19+00	145.6	130.30	15.3		19+57 1/2			94-13115-7 C26428	522 R Summitlaw	8-17-94 8-12-71		
20+00	144.7	130.50	14.2					94-13115-7 C26427	522 R Summitlaw	8-17-94 8-12-71		
21+00	143.5	130.70	12.8		21+02 1/2			94-13115-7 C26426	522 R Summitlaw	8-17-94 8-12-71		
	143.4	134.88 IN 130.88 OUT	12.5	21+85 1/2 = 0+00 LINE 2				94-13115-7 C26425	522 R Summitlaw	8-17-94 8-12-71		
22+00	143.5	134.96	8.5					94-13115-7 C26424	522 R Summitlaw	8-17-94 8-12-71		
	143.6	139.04 IN 135.04 OUT	8.5	22+26 1/2	4" P.V.C. 40 4" STUB NW			94-13115-7 C26423	522 R Summitlaw	8-24-94-2 8-12-71		
23+00	144.5	139.32	5.2					94-13115-7 C26422	522 R Summitlaw	8-24-94-2 8-12-71		
24+00	145.3	139.72	5.6					94-13115-7 C26421	522 R Summitlaw	8-24-94-2 8-12-71		
	146.9	139.76	6.2	24+06	4" STUB NW 4" STUB SW			94-13115-7 C26420	522 R Summitlaw	8-24-94-2 8-12-71		
	146.1	140.00	6.1	24+80 1/2	4" STUB W 4" STUB SW 4" P.V.C. 40			94-13115-7 C26419	522 R Summitlaw	8-24-94-2 8-12-71		
LINE 2												
0+00	143.4	130.99	12.4	0+00 = 21+85 1/2 LINE 1	4" S.C.H. 40 P.V.C. 4" STUB SE			94-13116-7 C26425	7035 R 7036 R	7-10-95 8-12-71		8-17-94
1+00	141.8	131.27	10.5		1+51 1/2	1+19 1/2		94-13116-7 C26424	7035 R 7036 R	7-10-95 8-12-71		8-12-71
2+00	140.5	131.57	8.9		2+11 1/2	2+15 1/2		94-13116-7 C26423	7035 R 7036 R	7-10-95 8-12-71		8-18-71
3+00	139.2	131.87	7.3		3+84 1/2	2+75 1/2		94-13116-7 C26422	7035 R 7036 R	7-10-95 8-12-71		8-18-71
	139.1	131.92	7.2	3+16 1/2 1/4" STUB SE & 6" STUB NE				94-13116-7 C26421	7035 R 7036 R	7-10-95 8-12-71		8-18-71
LINE 3												
0+00	145.6	134.08	11.5	0+00 = 18+86 1/2 LINE 1	4" S.C.H. 40 P.V.C. 4" STUB West			94-1266-7 C26427	514 N R Summitlaw	1-30-95 8-12-71		
	146.1	134.70	11.4	0+36 1/2 1/4" STUB W	4" S.C.H. 40 P.V.C. M.H. STUB N			94-5846-7 C26426	502 R Summitlaw	4-26-95 8-12-71		1-30-95

95-15421-7 9-26-95 7029 W Newell Repair - Padgett Excavation

95-10568-9 7-10-95 7002 Frazier - Install P.O. Gully 4" PVC 40 Tied back into 6" cast iron MH stub - NE replaced entire line, top (3+16.5)