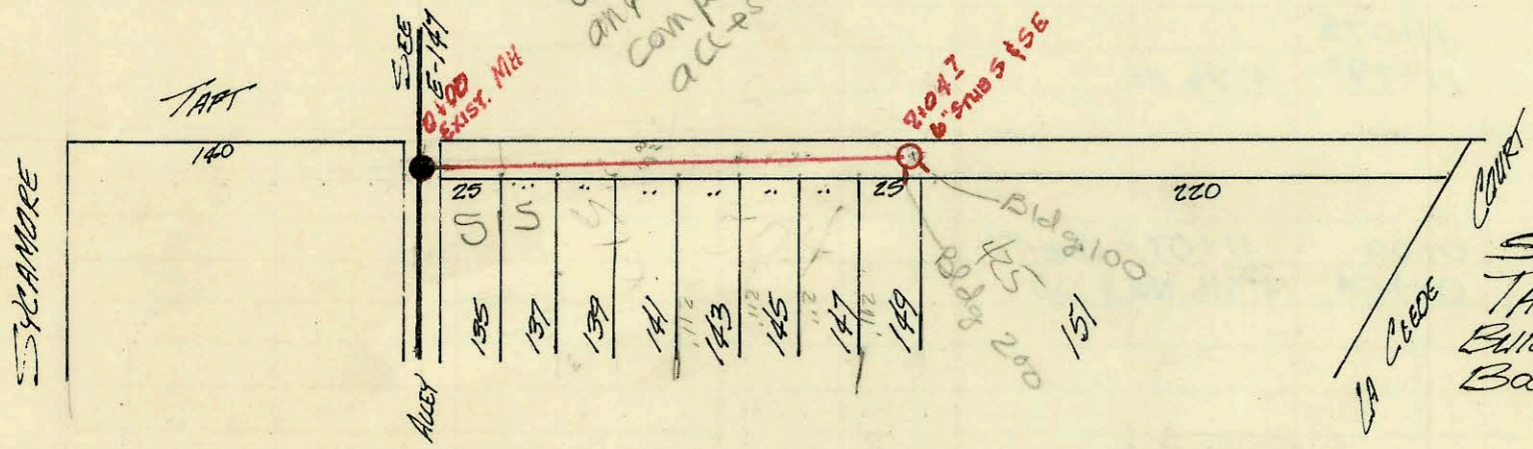


LAT 58, DRY CREEK SUB #8 SS #12
 BUILT BY: MID-STATES CONST. CO. INC.
 BOOKED 12 OCT 71 FROM IH-68
 PROJ. No DBKL511037

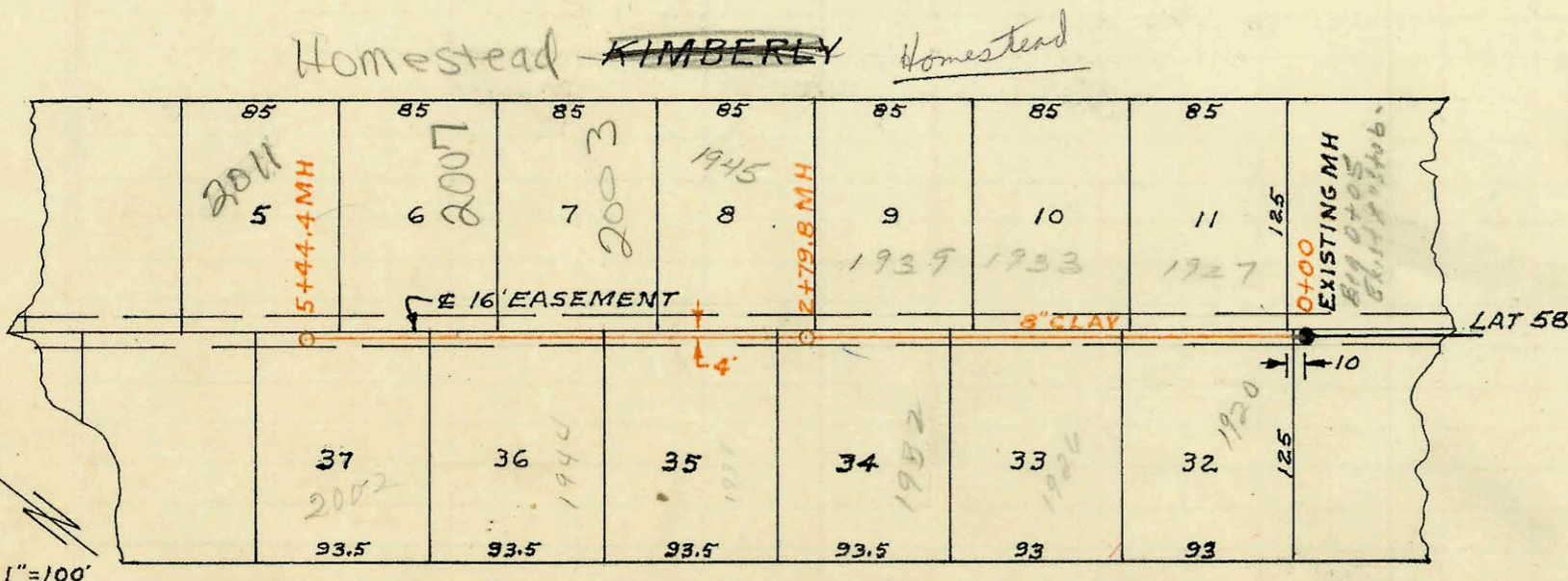
ON MAP 1139

Letter dtd 4/7/69
 by owner Ted Rowsey
 stating he will
 remove the
 shed in the
 8' utility easement at his exp
 any time a utility
 company needs
 access.



SANITARY SEWER EXTENSION
 TAFT STREET APARTMENTS
 BUILT BY: MID-STATES CONST CO.
 BOOKED: DEC 21, 1971 FROM SS JK #8
 PRIVATE PROJECT

ON MAP



SCALE 1"=100'

SIEFKIN

LAT 60 DCS N#2 SS N#12
 BUILT BY: WB CARTER CONST. CO INC
 PROJ N# DBKL574063
 BOOKED 9-21-74 FROM IH 67

CONSTRUCTION RECORD						SERVICE RECORD						
STATION	ELEVATION		Depth	MANHOLE	4-INCH "Y" BRANCHES		No. of Permit		House Number		DATE OF PERMITS	
	Ground	Grade			North West	South East	North West	South East	North West	South East	North West	South East
1+65	218.6	211.39	7.2	BEGIN 8" C.P.								
2+00	218.3	211.60	6.7	top 2+36.8			C48143		1802 Suffin	6220 517N	1-21-75	
	219.7	211.78	7.9	2+45.8			28248					12-27-88
3+00	220.1	212.10	8.0	top 3+20.6	2+63.8		C46259	66454	1808 Suffin	1809 Homestead	8-19-74	5-17-78
4+00	219.7	212.50	7.2	top 4+09.3	3+40.7		C67410		1814 Suffin	1815 Homestead		7-2-78
	219.8	212.87	6.9	4+93.2	4+37.9		C70345		1821 Suffin	1821 Homestead	2-13-74	2-26-79
5+00	219.9	213.00	6.6	5+45.6	5+17		C72547		1827 Suffin	1827 Homestead		6-26-79
6+00	221.5	213.40	8.1	top 6+43.8	5+83.4		C44764	C73571	1820 Suffin	1833 Homestead	5-7-74	8-15-79
7+00	223.5	213.80	9.7						1826 Suffin		10-17-73	
	224.2	213.95	10.2	7+40.4	7+50.4	7+74.1	C37203	C72546	1832 Suffin	1839 Homestead	5-24-73	6-26-79
8+00	225.5	214.30	11.2	8+40.4	7+81.9		C39204	16401	1902 Suffin	1903 Homestead	5-24-73	6-3-86
9+00	227.3	214.71	12.6	9+00.4	8+77.4			16096	1907 Suffin	1907 Homestead		4-11-86
10+00	227.1	215.20	11.9	top 9+48.4	9+62.4		C34336	15510	1908 Suffin	1915 Homestead	8-22-72	1-27-86
	226.5	215.45	11.1	top 10+46.0	10+20.0		C34435	C75157	1914 Suffin	1921 Homestead	8-22-72	11-2-79
				10+61.2	8" stub N.							
SANITARY SEWER EXTENSION FOR TART ST. APARTMENTS												
0+00	109.9	99.33	10.6	0+00 EXIST. M.H.								
1+00	109.6	101.08	8.5									
2+00	111.6	102.83	8.8									
	111.7	102.92	8.8	204.7	6" stub S & SE		C29505	C29504	425 TART BLDG 200	425 TART BLDG 100	12-20-71	12-20-71
LAT 60 DCS N ^o 2 SS N ^o 12 EXISTING MH 0+00												
0+00	227.3	215.35	12.0	EXISTING MH 0+00								
1+00	226.4	215.75	10.7	top 0+48.8	0+51.0		C46807	C75158	1920 Suffin	1927N Homestead	9/25/74	12-2-79
2+00	225.8	216.15	9.7	top 1+63.6	1+53.2		C48220	C75159	1926 Suffin	1933N Homestead	1-28-75	11-2-79
	225.4	216.47	8.9	2+32.8	2+02.2		C58807	C75160	1932 Suffin	1939N Homestead	8-12-75	11-2-79
3+00	225.4	216.55	8.8	3+14.8	3+05.8		54976	C72548	1939 Suffin	1945N Homestead	4-26-76	6-26-79
4+00	225.1	216.95	8.2	4+02.8	3+87.8		54977	21132	1944 Suffin	2003 Homestead	4-26-76	7-21-88
5+00	224.4	217.35	7.0	4+74.4	4+65.6 top		459327	94-30457	2007 Suffin	2007N Homestead	1-3-77	12-7-93
	224.4	217.53	6.9	5+44.4	4" SCH 40 5+40.4 Predco			2001 Suffin	2011 Homestead			615-01

NO MH LOCATED
 4" sch uPVC 13' E of uPVC in Road
 (Clay under out Bldg - connection Clay to
 plastic 1.4" trap 1.4" C.O.) See also E-147
 NO sewer which line
 connected into)

92-23099-7 8/24/92 505 w/ Tart (freiler) - c. Lee table