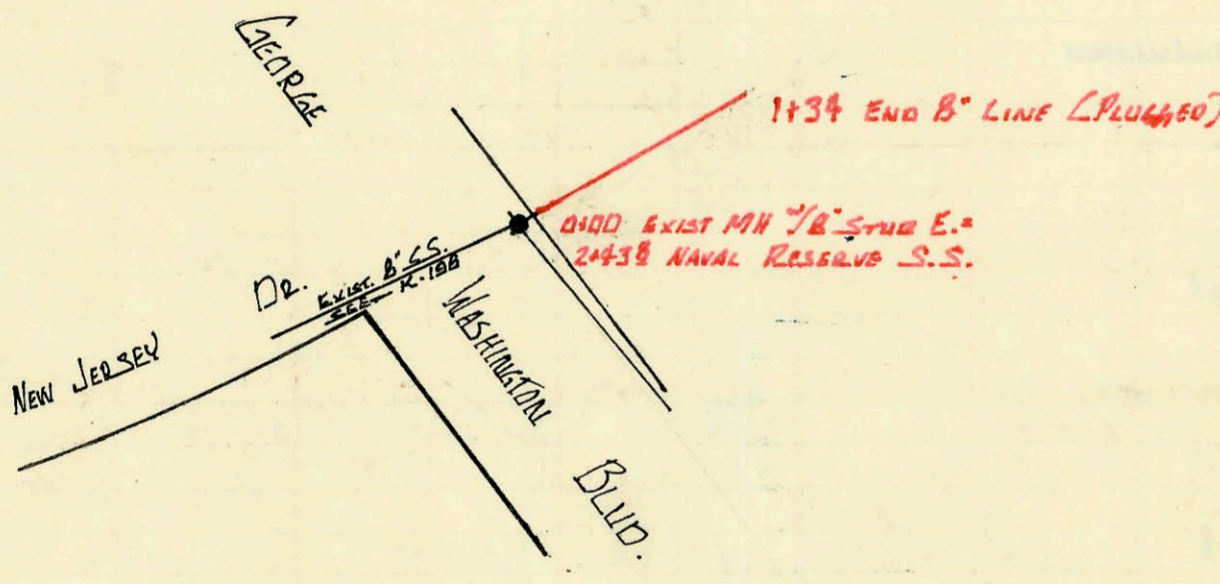
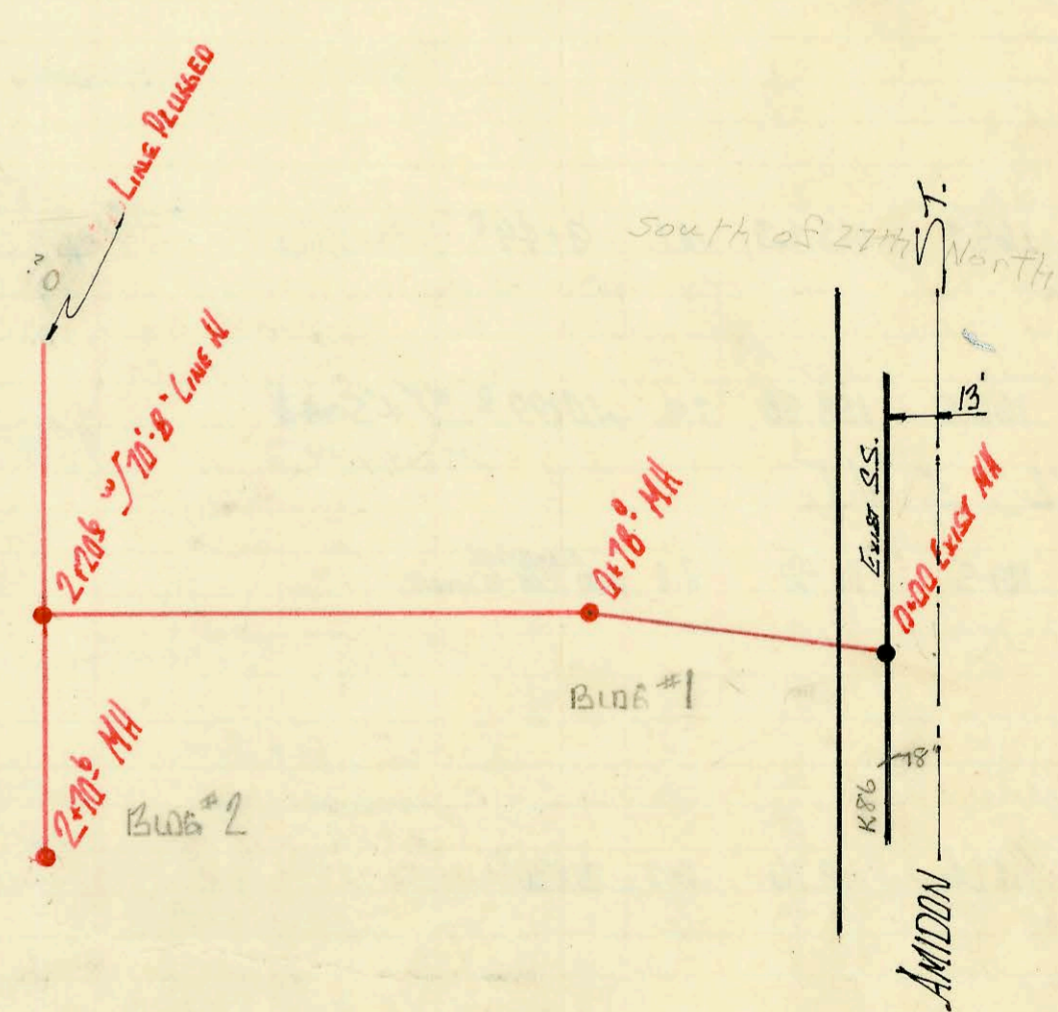


LAT 24, MAIN 1, S.W.I.
 BUILT BY: MID-STATES CONST. CO.
 BOOKED: MAY 11, 1972 FROM 222-Y
 PROJECT NO. DBKLS11007



PRIVATE S.S. FOR KANSAS DIVERSIFIED PRODUCTS.
 (2930 GEO. WASHINGTON BLVD)
 BUILT BY: MID-STATES CONST. CO.
 BOOKED: MAY 12, 1972 FROM 222-Y



PRIVATE S.S. EXTENSION FOR
 AMIDON ARMS APARTMENTS
 BOOKED 18 MAY 1972 FROM PLAN
 BUILT BY MID-STATES CONST. CO.

