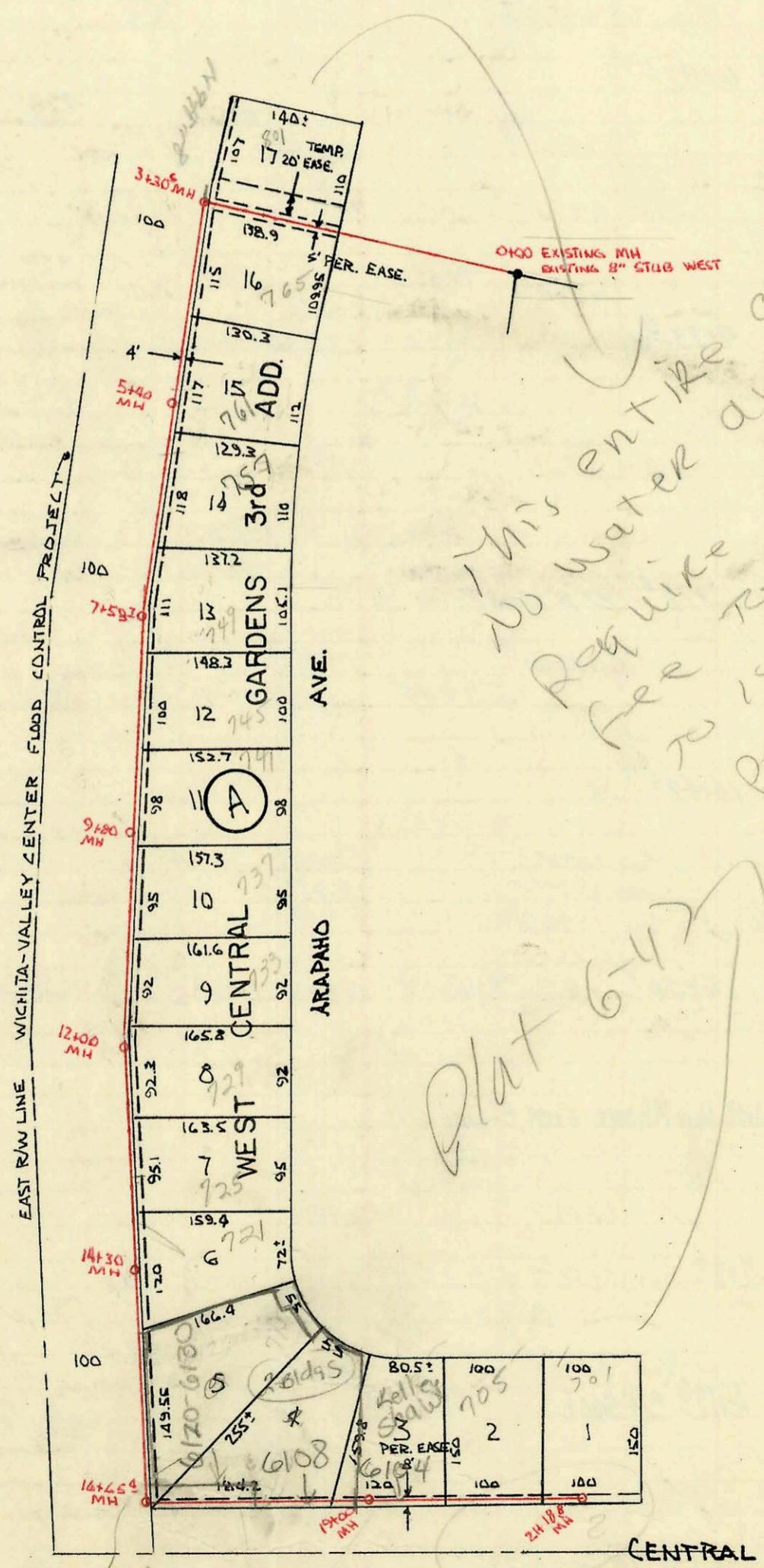


SERVICE RECORD

CONSTRUCTION RECORD



This entire area
 No water available.
 Require sewer Equity
 fee to be paid prior
 to issuance of sewer
 permit to connect
 BSR 3-11-81

Plat 6-477



LAT. 210, SUBMAIN 5, SS. NO. 22
 BUILT BY-UTILITY CONTRACTORS INC.
 BOOKED 8-8-72 FROM K-106
 PROJ. NO. DBKL 572005

on map

Replat
 Steve Kelley SPD

CONSTRUCTION RECORD						SERVICE RECORD						
STATION	ELEVATION		Depth	MANHOLE	4-INCH "Y" BRANCHES		No. of Permit		House Number		DATE OF PERMITS	
	Ground	Grade			North West	South East	North West	South East	North West	South East	North West	South East
LAT. 210, SUBMAIN S, SS #22												
0+00	122.4	113.95	8.5	0+00 EXIST. EXIST 2' STUB W.								
1+00	122.2	114.15	8.1									
2+00	123.9	114.35	9.6		top 2+55 ⁰ top 2+67 ³			039014 038814	765 N. Arapaho 801 No. Arapaho		5-15-73 5-7-73	
3+00	124.0	114.55	9.5									
	124.0	114.61 out 114.71 in	7.4 7.3	3+30 ^s								
4+00	124.3	114.85	9.5					5th 1494-00072	750 Arapaho		6-28-79	
5+00	123.7	115.05	8.7					9617861-7	761 N Arapaho		10-17-91	
	124.7	115.13	9.6	5+40								
6+00	124.5	115.25	9.2									
7+00	123.9	115.45	8.5									
	123.8	115.57	8.2	7+59 ²	top 7+22 ²			044812	749 Arapaho		5-10-74	
8+00	124.1	115.65	8.5		8+31.3 ²			043911	745 Arapaho		3-11-74	
9+00	123.6	115.85	7.8		9+21.0 ²			10460	741 Arapaho		3-14-84	
	123.7	116.01	7.7	9+80 ^o								
10+00	123.8	116.05	7.8		top 10+37			041616	737 Arapaho		10-10-73	
11+00	122.6	116.25	6.4		TAP 11+38.2			039344	733 Arapaho		6-4-73	
12+00	122.6	116.45	6.1	12+00	top 12+27 ^o			0000-00497 038582	729R Arapaho		2-21-84 4-30-73	
13+00	121.8	116.65	5.2		top 13+35.1			59228	725 Arapaho		12-22-76	
14+00	121.9	116.85	5.1		top 14+01 ⁵			034511	721 Arapaho		8-28-72	
	122.1	116.91	5.2	14+30	4" SDR 35 14+94 ¹⁰			94-15923-7 18334	717 S/O Arapaho		9-30-94 5-14-81	
15+00	121.1	117.05	4.1		4" SDR 35 14+94 used old cell for 911 Arapaho			95-4987	6120-6130 See in Central Below		4-10-95	
16+00	122.2	117.25	5.0		18+55.4 18+52			17684 054653	6108 W Central		1-26-87 4/10/76	
	123.5	117.35 out 117.48 in	6.1 6.0	16+65 ⁴								
17+00	123.9	117.55	6.4									
18+00	122.4	117.75	5.7									
19+00	122.8	117.95	4.9	19+00	19+85.6 19+27 19+25.6 TAP			17685 054122 17884	709 Arapaho 6120 W Central 705 N Arapaho		1-26-87 3-10-76 3-6-87	
20+00	121.8	118.15	3.7		TAP 20+01 ²			034831			1-13-72	
21+00	121.8	118.35	3.5									
	121.8	118.39	3.4	21+8 ^e								

6120-6130 W Central - orig Bldg permit used primary address as 6108 W Central. There are 2 Bldgs - one at 6108 and one at 6120-6130.