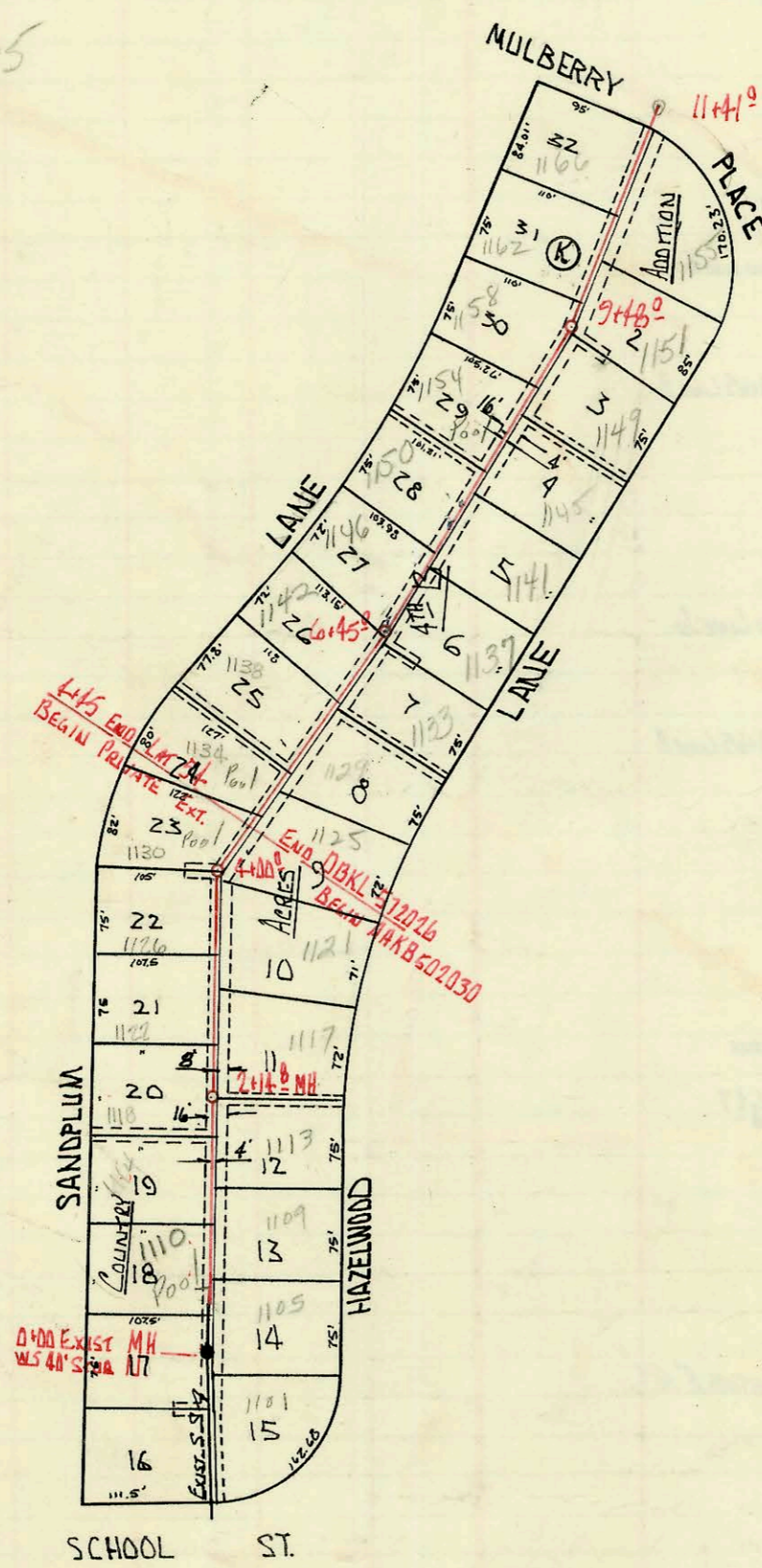


LAT 16, SUB 21, SS 22
 BUILT BY: W. B. CARTER CONST. CO. INC.
 BOOKED 23 AUG 72 FROM K-103
 PROJECT NO DBKL 569006

RELOCATION OF PART OF
 LAT 16 SUB 21 SS 22
 BUILT BY: MID STATES CONST. CO.
 PROJ. NO DAKR500580
 BOOKED 4-7-77 FROM LES 7

SEE K-95



EXTENSION TO LAT 54, WESTLINK
 BUILT BY UTILITY CONTRACTORS
 BOOKED 22 AUG 72 FROM K-101
 PROJECT NO AAKBS02030 - PRIVATE

LAT 54, WESTLINK SEWER
 BUILT BY UTILITY CONTRACTORS
 BOOKED 22 AUG 72 FROM K-101
 PROJECT NO DBKL 572026

on map

M-168

Form 42-020

CONSTRUCTION RECORD						SERVICE RECORD						
STATION	ELEVATION		Depth	MANHOLE	4-INCH "Y" BRANCHES		No. of Permit		House Number		DATE OF PERMITS	
	Ground	Grade			North West	South East	North West	South East	North West	South East	North West	South East
LAT 16, SUB 21, S. 5 th 22												
0+00	135.9	128.53	7.4	EXISTING 0+00 36" 8" EP No. 11								
1+00									4001 N Charles			4-18-73
2+00									4000 N Clarence			6-8-77
	137.2	128.95	8.2	2+10	top 2+41 ² top 3+54 ² top 3+58.5	top 2+24 ²	C35027 C33986	C34461	4018 N Clarence 4026 N CLARENCE	4019 N CHARLES	9/25/72 7-31-72	8-23-72
3+00									4027 N Charles			8-16-76
4+00					top 4+98 ²		C34169		4034 N CLARENCE			8-9-72
5+00												
	136.3	129.68 IN 129.56 OUT	6.7 6.8	5+16 ⁰								
6+00												
7+00												
	136.1	130.56	5.6	7+40 ⁵ W 54" SUB 5								
RELOCATION OF PART LAT 16 SUB 21 55 22												
0+00	136.5	129.63	6.9	0+00								
1+00	136.7 136.4	130.03 130.29	6.7 6.1	1+65.5								
2+00	136.3 136.3	130.43 130.54	5.9 5.8	2+28.0								
												4" SUB 5
LAT 54, WESTLINK SEWER												
0+00	130.7	124.46	6.2	EXISTING 0+00 38" 40" SUB N.								
1+00					top 1+54.6 top 1+48.6		C35089 C42159		1110 Sandplum 1111 Sandplum		9-28-72 11-8-73	
2+00					top 2+10.9 top 0+90.5 top 1+62.3		C50358 C50359 C50360		1100 Hazelwood 1109 Hazelwood 1113 Hazelwood		7-16-75 7-16-75 7-16-75	
	130.4	124.89	5.5	2+14 ⁸	top 2+25 ² top 2+97 ² top 3+65 ²	top 2+41 ⁰ top 3+22 ⁴ top 4+50 ²	C34272 C34273 C34274	C43354 C43355 C43357	1118 SANDPLUM 1122 SANDPLUM 1126 SANDPLUM	1117 See Below 1121 Hazelwood 1135 Hazelwood	8-15-72 8-15-72 8-15-72	2-5-74 2-5-74 2-5-74
3+00												
4+00	130.5	125.16	5.3	4+00 ⁹	top 4+82.4		C34276		1134 SANDPLUM		8-15-72	
4+45	END PROJ. DBKL572026 BEGIN AAKB 502030				top 5+16.3		C43356		1129 Hazelwood		2-3-74	
5+00					top 5+31.2 top 5+96.0		C34277 C35366		1138 SANDPLUM 1142 Sandplum		8-15-72 10-12-72	
6+00												
	130.9	125.75	5.2	6+45 ⁰	top 6+01 top 6+98.8	top 6+90.4	C49612 C37054	C44475	1133 Hazelwood 1146 Sandplum	1137 Hazelwood	12-2-74 2-6-73	4-17-74
7+00					top 7+77.2	top 7+56.3	C37055	C44494	1150 Sandplum	1141 Hazelwood	2-6-73	4-17-74
8+00					top 8+02.7 top 8+42 ²	top 8+76.0	C46505 C42259	C44492	1145 Hazelwood 1154 Sandplum	1149 Hazelwood	9-3-74 7-25-73	4-17-74
9+00					top 9+32.4	top 9+79.0	C38885	C44493	1158 Sandplum	1151 Hazelwood	5-9-73	4-17-74
	132.0	126.35	5.6	9+48 ⁰	top 10+04.7 top 10+69.0	top 10+54 ¹⁰	C38886 C37727	C47610	1162 Sandplum 1168 Sandplum	1155 Hazelwood	5-9-73 3-16-73	12-2-74
10+00												
11+00												
	11+41 END PROJ AAKB 502030 LINE PLUGGED FLO ELEV @ 126.74											

EXTENSION TO LAT 54, WESTLINK - PRIVATE

Rep- 2000-01944- 1117 N Hazelwood - Redgett - 4" SCH 40 - Broke at house - repaired + added co