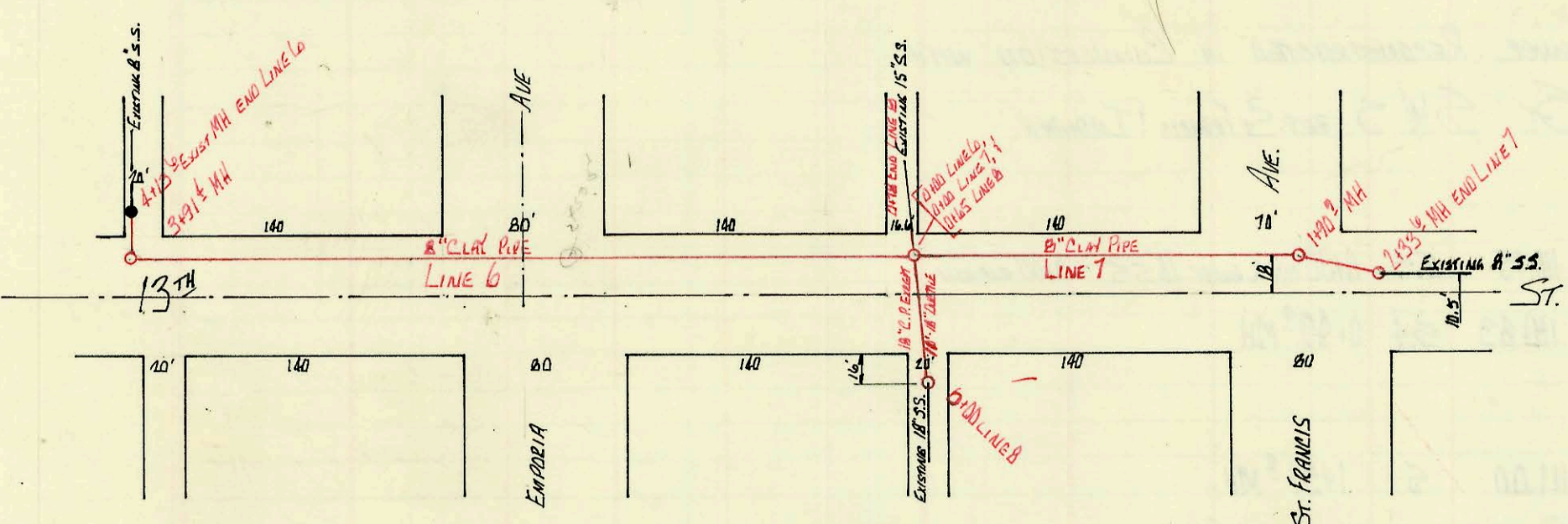


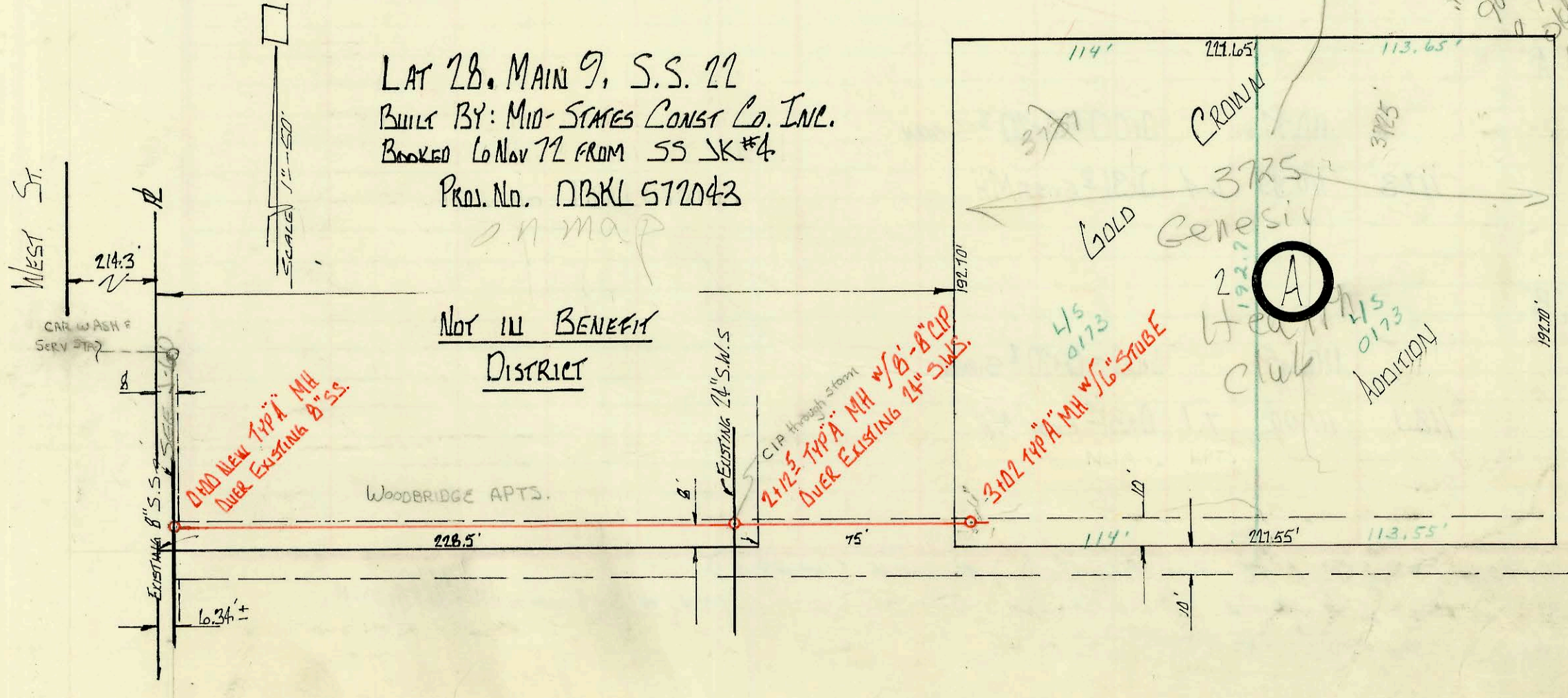
RECONSTRUCTION & RELOCATION OF S.S.
 IN CONNECTION WITH PAVING 13TH ST
 FROM W. ORLANS - E. ST. FRANCIS
 BUILT BY: MID-STATES CONST CO. INC
 BOOKED 24 AUGUST 72 FROM I.H.-79
 PROJECT NO. DAKM 571031

on map



3725 W 13th - new bldg in 2006
 advised by Dan Lundy
 on 2/24/06. orig. Bldg
 line never sealed off
 plug in exit from
 908. This pipe to
 old sewer to
 line. No seal
 permit request
 BZ

LAT 2B, MAIN 9, S.S. 22
 BUILT BY: MID-STATES CONST CO. INC.
 BOOKED 10 Nov 72 FROM SS SK #4
 PROJ. NO. DBKL 572043
 on map



NOT IN BENEFIT
 DISTRICT

CONSTRUCTION RECORD

SERVICE RECORD

RECONSTRUCTION AND RELOCATION OF SANITARY SEWERS IN CONNECTION WITH PAVING 13th ST FROM WILMITS - EL ST FRANCES

STATION	ELEVATION		Depth	MANHOLE	4-INCH "Y" BRANCHES		No. of Permit		House Number		DATE OF PERMITS	
	Ground	Grade			North West	South East	North West	South East	North West	South East	North West	South East
LINE 1												
0+00	117.0	112.44	4.6	0+00 = 0+00 LINE 3 & 0+51 ⁵ LINE 4 BEGIN 8" CLAY PIPE								
1+00												
2+00												
3+00	118.2	112.83	5.4	2+55 ⁶ = 0+00 LINE 2 BEG 8" DUCTILE W/ ENCASEMENT EXCEPT FOR 35'-20" TUNNEL								
	117.0	113.02	4.0	3+85 END DUCTILE, BEGIN 8" CLAY PIPE								
	118.0	113.04	5.0	3+94 ⁶ NEW MH OVER EXIST. LINE								
LINE 2												
0+00	118.2	113.07	5.1	0+00 = 2+55 ⁶ LINE 1 BEGIN 8" CLAY PIPE W/ 10" 8" DUCTILE								
	118.2	113.21	5.0	0+55 ³								
LINE 3												
0+00	117.0	112.26	4.7	0+00 = 0+00 LINE 1 & 0+51 ⁵ LINE 4 BEGIN 8" CLAY PIPE								
1+00												
2+00												
3+00	116.5	112.64	3.9	2+48 ⁹								
	116.1	112.80	3.3	3+56 ¹ = 0+00 LINE 5								
	116.7	112.93	3.8	3+73 EXIST MH END LINE 3								
LINE 4												
0+00	117.0	112.12	4.9	0+00 MH OVER EXIST 18" LINE BEG 18" C.P. EXCEPT FOR 10'-18" DUCTILE								
	117.0	112.17	4.8	0+51 ⁵ = 0+00 LINE 1 & LINE 3 END 18" C.P. BEGIN 15" C.P.								
0+64 END 15" (LINE 4) CONNECT TO EXISTING 15" @ FLD OF 112.18												
LINE 5												
0+00	116.1	112.86	3.2	0+00 = 3+56 ¹ LINE 3 BEGIN 8" C.P. EXCEPT FOR 10'-8" DUCTILE								
	116.0	112.97	3.0	0+56 ³ EXIST MH END LINE 5								
LINE 6												
0+00	116.4	111.97	4.4	0+00 = LINE 7 @ 0+65 LINE B BEGIN 8" CLAY PIPE								
1+00												
2+00												
3+00	115.1	112.76	2.3	3+91 ⁴								
4+00	116.5	112.90	3.6	4+13 ⁶ EXIST MH END LINE 6								
LINE 7												
0+00	116.1	111.91	4.2	0+00 = 0+00 LINE 6 & 0+65 LINE B BEGIN 8" CLAY PIPE								
1+00	117.1	112.20	4.9	1+90 ⁹								
2+00	116.9	112.26	4.6	2+33 ⁶ END 8" CLAY PIPE								
LINE 8												
0+00	116.8	111.65	5.2	0+00 BEGIN 18" C.P. EXCEPT FOR 11'-18" DUCTILE								
	116.1	111.67	4.6	0+65 = 0+00 LINE 6 & 7 BEGIN 15" C.P. END 18"								
0+78 END 15" (LINE 8) CONNECT TO EXIST 15" FLD @ 111.68												
LAT 28, MAIN 9, S.S. 22												
0+00	126.7	121.00	5.7	0+00 MH OVER EXISTING 8" S.S.								
1+00												
2+00	125.2	121.42	3.8	2+12 ⁵								
3+00	125.8	121.6	4.2	3+02 W/ 6" STRIP E. M.H. Top								

664551
3737050
13th
12-19-77
3-6-78
6-22-73

50060705-126 E. 13th - all paving - 4-12-77 (40' W/ 49.7' N 13' 3' 22.0")
 R 9952-1400 n market - 1-4-84 - Jim Beckford - Rep requesting 3" cut pipe - should be 4" - was informed - no mess.