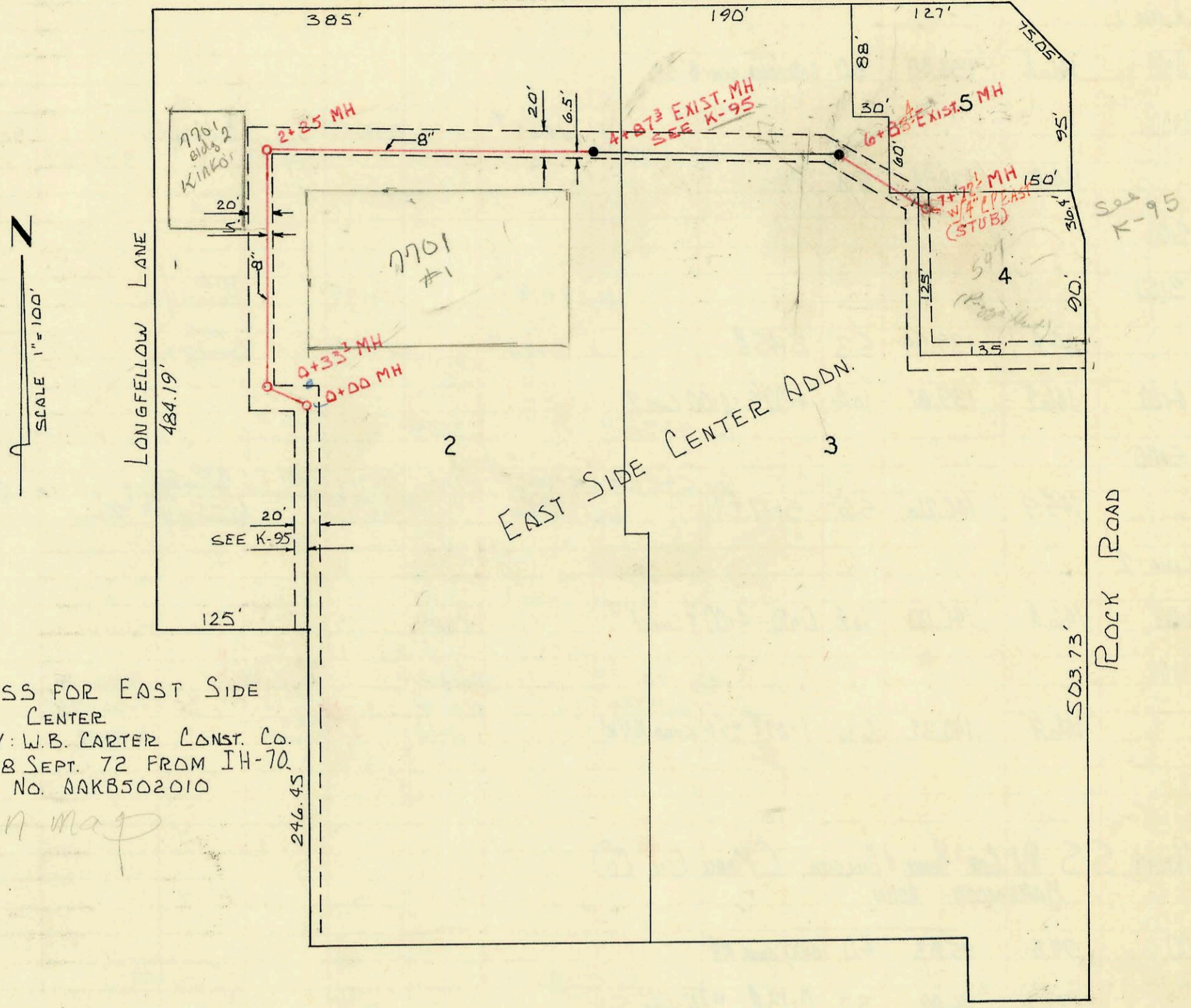


SERVICE RECORD

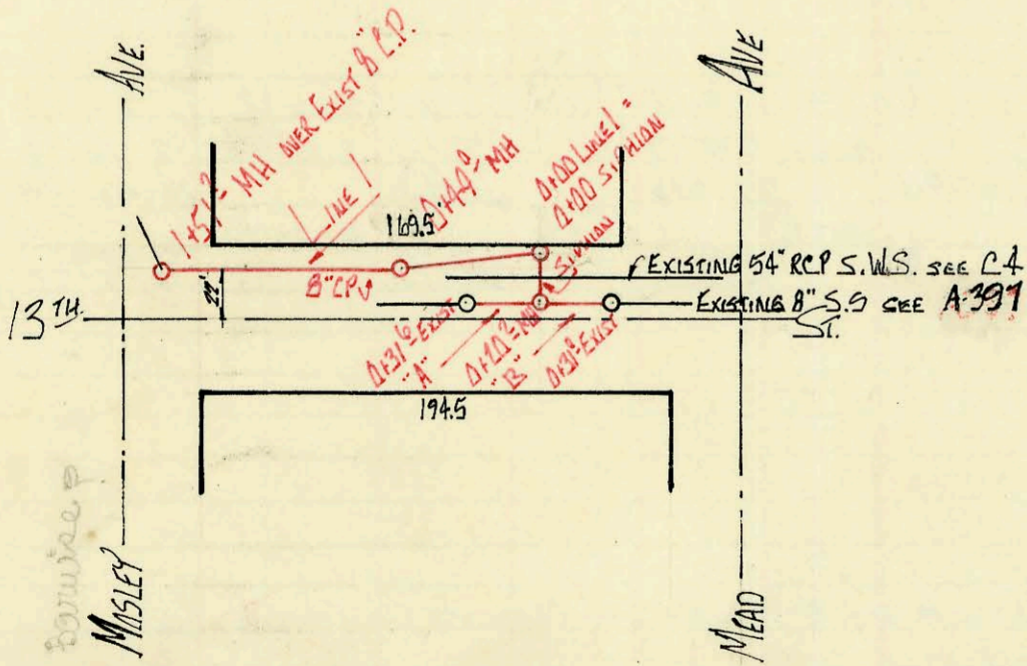
CONSTRUCTION RECORD

KELLOGG US 54



PRIVATE SS FOR EAST SIDE
 FINANCIAL CENTER
 BUILT BY: W.B. CARTER CONST. CO.
 BOOKED 8 SEPT. 72 FROM IH-70
 PROJECT NO. DAKB502010

on map



SANITARY SEWER RECONSTRUCTED IN CONNECTION WITH
 13TH ST. S.W.S. BET ST. FRANCIS & INDIANA
 BUILT BY: W.B. CARTER CONST. CO. INC.
 BOOKED: 13 SEPT 72 FROM IH-68
 PROJECT NUMBER DBKA572012

on map

M-170

Form 42-020

CONSTRUCTION RECORD						SERVICE RECORD						
STATION	ELEVATION		Depth	MANHOLE	4-INCH "Y" BRANCHES		No. of Permit		House Number		DATE OF PERMITS	
	Ground	Grade			North West	South East	North West	South East	North West	South East	North West	South East
PRIVATE SS FOR EAST SIDE FINANCIAL CENTER												
0+00	158.0	151.72	6.3	0+00								
	158.3	151.85	6.5	0+33 ^I								
1+00					TAP 1+34 ⁴			C 3327	7701 Kelllogg	7701 E Kelllogg		6-29-72
2+00					TAP 1+38 ²			C 3326	7701 Kelllogg	7701 E Kelllogg		6-29-72
					4" SCHED 40 1764.2 TAP			2000-02131	7701 Kelllogg	7701 E Kelllogg		9-27-00
	159.5	152.81	6.7	2+25								
3+00												
4+00												
	162.6	153.88	8.7	4+87 ³ EXIST.								
5+00					EXIST. LINE							
6+00												
	164.1	155.01	9.1	6+83 ¹ EXIST.	Tap 7+58 ⁴			19987 43788	7937 Kelllogg	7937 Kelllogg		1-25-88 3-4-74
7+00					7+58.4			20189	7937 Kelllogg	(see Long John's)		2-29-88
	163.7	155.4	8.3	7+72 ¹	(STUB) 1/4" C.P. EAST			C46930	547 S. Rock	Pizza Hut		10-4-74
SANITARY SEWER RECONSTRUCTED IN CONNECTION WITH 13 TH ST. S.W.S. BET ST. FRANCIS & INDIANA.												
LINE 1												
0+00	116.2	110.75	5.5	0+00	OVER EXIST 18" S.S. = 0+00 SIPHON							
	116.2	110.83	5.4	0+49 ⁰ MH								
1+00												
	116.1	111.00	5.1	1+51 ² MH								
SIPHON												
	116.2	110.75		0+00	BEGIN SIPHON							
				0+20 ²	END SIPHON (BEGIN "A" & "B")							
"A"												
		110.77		0+00	= 0+20 ² SIPHON							
	117.3	110.85	6.4	0+31 ⁰	EXIST MH							
"B"												
		110.65		0+00	= 0+20 ² SIPHON							
	118.1	111.00	7.1	0+31 ⁰	EXIST MH							

Tap - C44885 - 549 S. Rock Rd - (see data Nelson) 5-15-74 (6+27.0)
 Tap - C44917 - 549 S. Rock Rd. (Tap connect) 5-17-74 (MH 6+83.4) 10' S of 8" main - 56' W. of M.H.
 Tap - 19986 - 1-2588 - (7937 S. Kelllogg) - Henning - ()