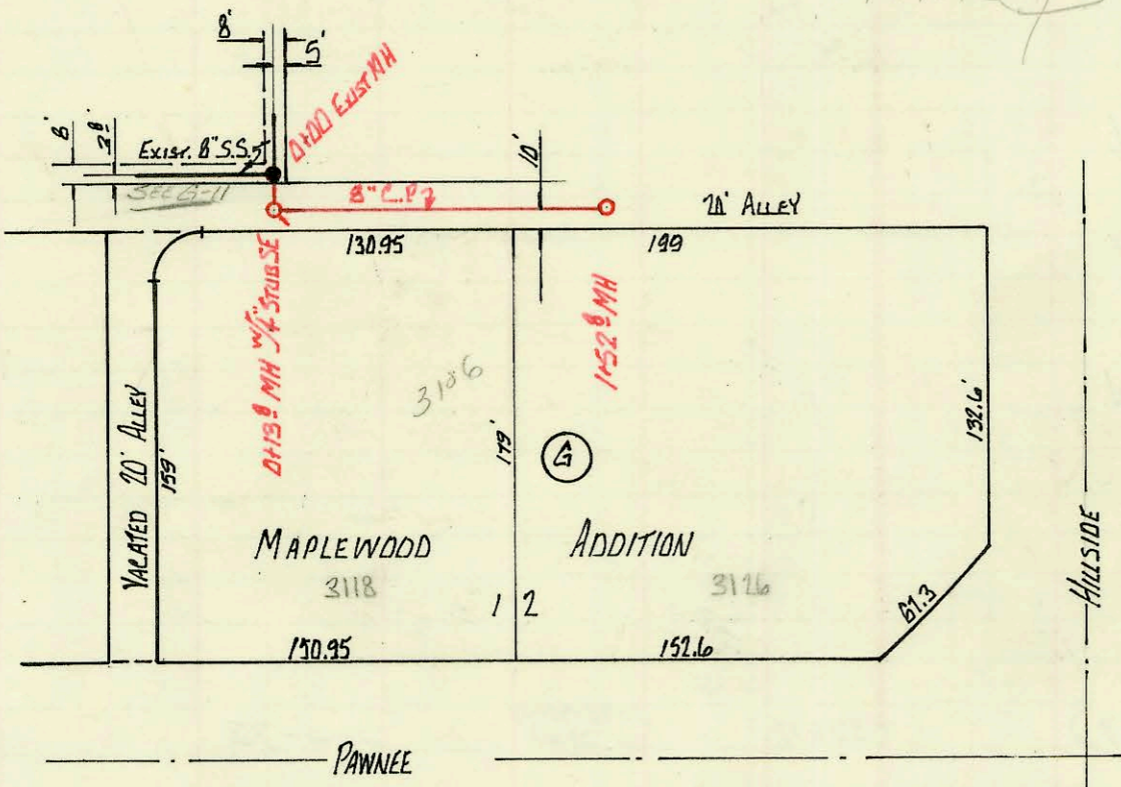


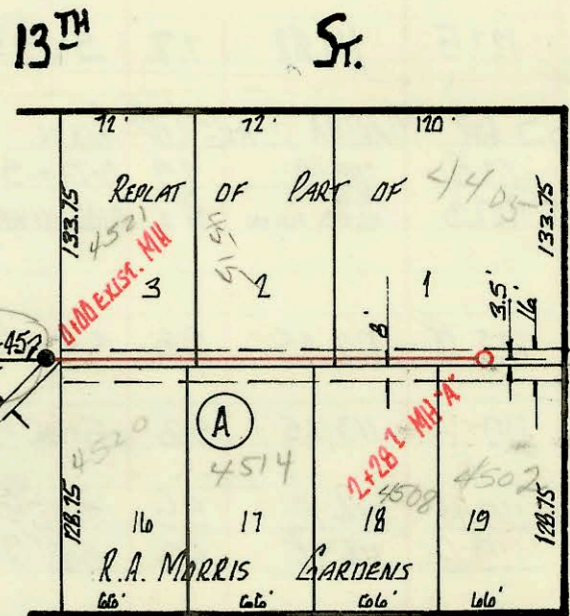
LAT 9, MAIN 5, WIS.
 BUILT BY: MID-STATES CONST. CO. INC.
 BOOKED 15 SEPT 72 FROM 239-Y
 PROJECT No. DBKL 572037

on map



PRIVATE S.S. ON NW COR OF
 HILLSIDE & PAWNEE - MOBIL OIL.
 BUILT BY W.B. CARTER CONST. CO.
 BOOKED 20 SEPT 72 FROM 245-Y
 PROJECT No. AAKB 502038

on map



LAT 213, MAIN 5, SS #21
 BUILT BY MID-STATES CONST. CO. INC.
 BOOKED 41 SEPT 72 FROM S.S. JK #5
 PROJECT No. DBKL 572038

on map



DOUGHERTY AVE

CONSTRUCTION RECORD						SERVICE RECORD						
STATION	ELEVATION		Depth	MANHOLE	4-INCH "Y" BRANCHES		No. of Permit		House Number		DATE OF PERMITS	
	Ground	Grade			North West	South East	North West	South East	North West	South East	North West	South East
LAT 9. MAIN S. WIS.												
LINE 1												
0+00	146.4	138.40	8.0	0+00 / OVER EXIST 8" S.S.								
1+00	144.8	138.98	5.8	1+91 ¹	top 1+04 ²	top 1+07 ⁴	C46642	C46645	1107 Briarcliff Cir.	1117 Briarcliff Cir.	9-13-74	9-13-74
2+00												
3+00	144.8	139.54	5.3	3+45 ⁸	top 3+18 ³	top 3+83 ⁴	C46644	C47716	1112 Briarcliff Cir.	1116 Briarcliff Cir.	9-13-74	5-2-74
4+00	146.2	139.81	6.4	4+00 ⁶ = 0+00 LINE 2	top 4+53.4		C35033		7137 E. Zimmermanly		9-25-72	
5+00	145.9	140.26	5.6	5+17 ⁴	top 5+04.4 ⁴	top 4+61 ⁸	C35034	C47717	7201 E. Zimmermanly	1120 Briarcliff Cir.	9-25-72	5-2-74
LINE 2												
0+00	146.8	140.00	6.8	0+00 = 4+00 ⁶ LINE 1								
1+00	146.9	140.32	6.6	1+07 ² "54" STUB N.W.W	top 1+51 ⁵	M.H. Tap	C43430	C39154	1108 Briarcliff Cir.	7125 E. Zimmermanly	2-12-74	5-22-73
PRIVATE S.S. NW COR PAVINEE & HILLSIDE (MOBIL OIL CO) MAPLEWOOD ADDN.												
0+00	99.8	95.83	4.0	0+00 EXIST. MH								
	99.7	96.00	3.7	0+13 ⁸ "4" STUB S.E.				20755		3102 (OR 3100) E. PAVINEE SIO	5-31-58	
1+00	99.5	96.37	3.1	1+52 ⁸	1+52.8 top	M.H. TAP.	91-25917-7	91-20782-9	3128 E. PAVINEE TAP	3126 E. SIO PAVINEE	6-07-91	4-19-91
LAT 213. MAIN S. SS#22												
0+00	129.0	121.40	7.6	0+00 EXIST								
1+00					top 1+28.2	top 0+45.6	C66488	C59625	4521 W. Whitehall	4520 Whitehall	5-22-78	1-26-77
1+00					top 1+15.9	top 1+78.1	9258	C62717	4515 W. Whitehall	4514 Whitehall	9-23-83	8-24-77
2+00					top 1+94.7	top 2+24 ⁸	C35618	C35786	4405 W. Whitehall	4508 Whitehall	11-3-72	10-26-72
	127.0	122.09	5.0	2+28 ¹			20912	C72594	4502B Whitehall		6-21-88	12-5-73

2001-00383-21201-1126 S Briarcliff - Redd - 4" sch 40 - 5' W of MH 5+17.4 (5+12.4) Fernco to PKG 1' from main ITWIN CO, 2H22, 2H45, Fernco to CI @ house

91-20782-2701 11-19-91 3128 E. Pavnee - Boyd Francis - s/b MH stub 4" Dig alley cut.