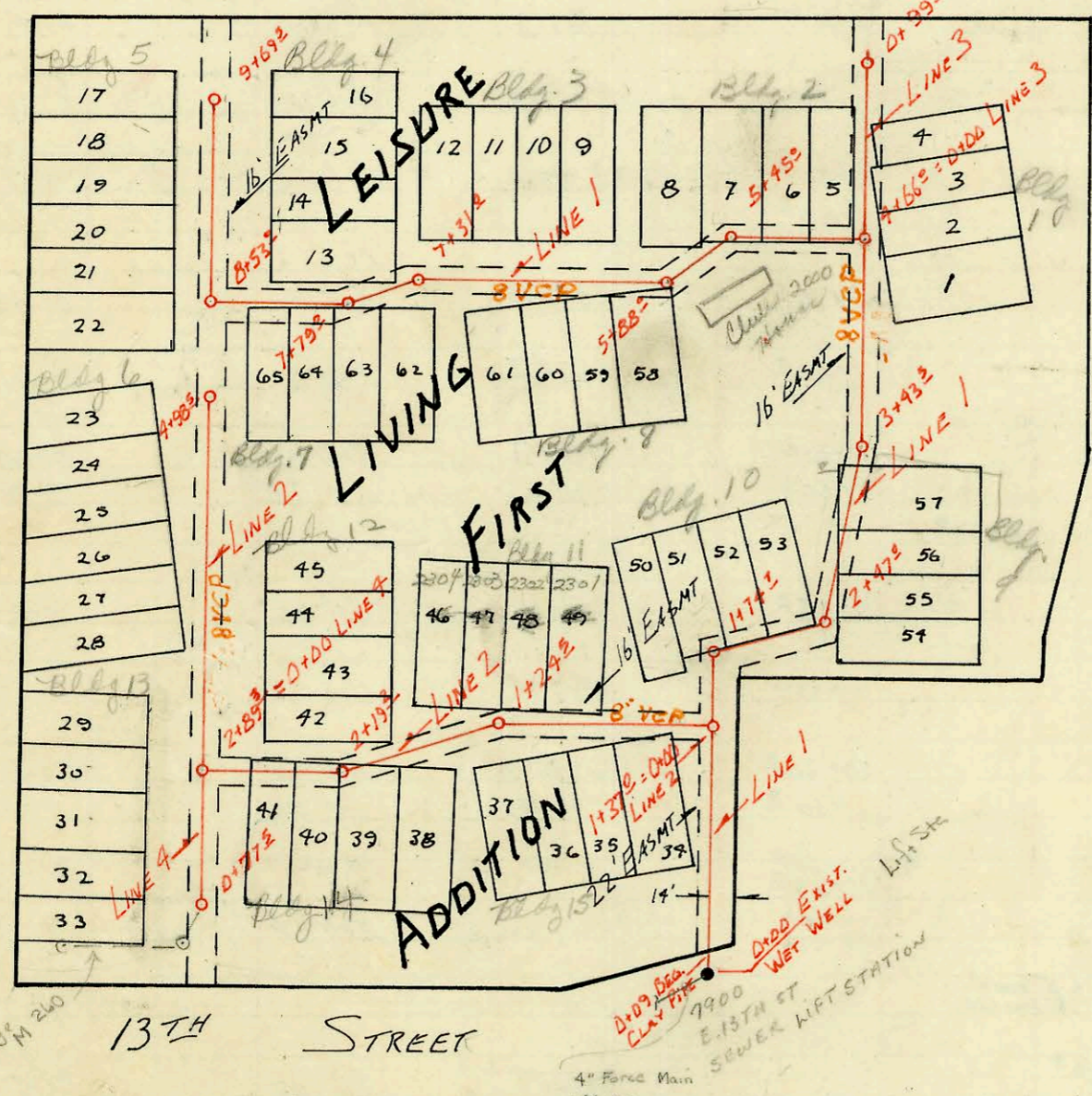
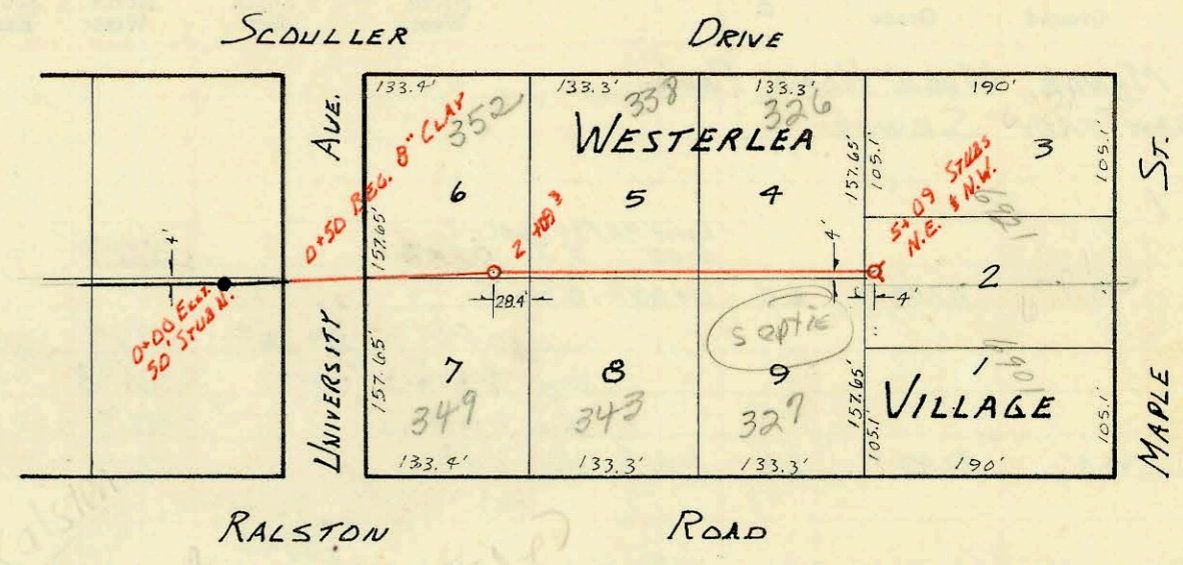


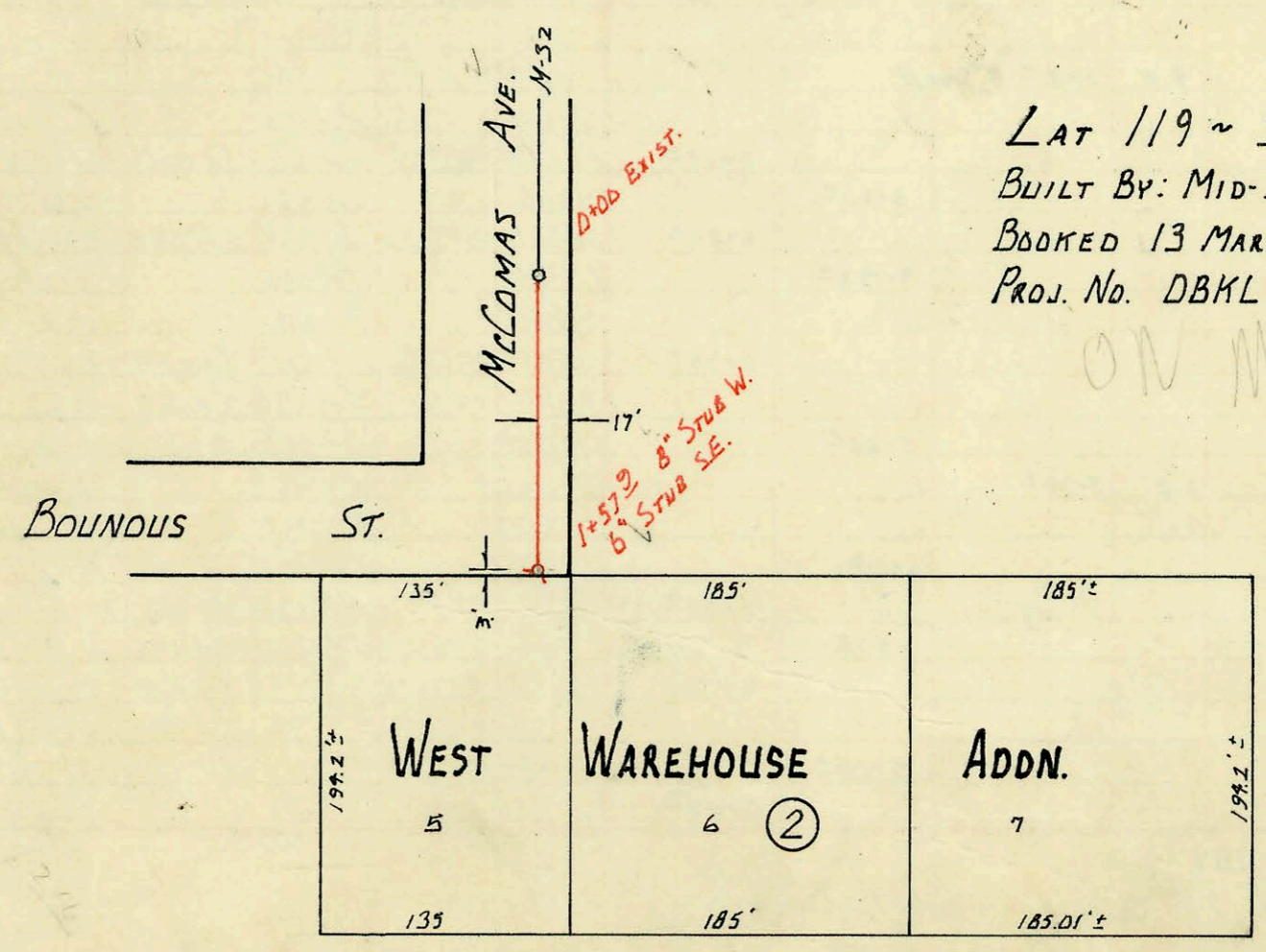
SCALE 1" = 150'

LAT 5, MAIN 4, S.W. INTERCEPTOR  
 BUILT BY: MID-STATES CONST. CO., INC.  
 BOOKED 5 FEB 73 FROM K-103  
 PROJ. NO. DBKL 57102B  
 ON MAP



LAT 94 DRY CREEK MAIN 2 S.S.#12  
 BUILT BY: UTILITY CONTRACTORS  
 BOOKED 20 FEB 73 FROM I.H.-69  
 PROJ. NO. DBKL 572065  
 ON MAP

SCALE 1" = 100'



LAT 119 ~ S.S. #22  
 BUILT BY: MID-STATES CONST. CO.  
 BOOKED 13 MARCH 73 FROM S.S. J.K.\*9  
 PROJ. NO. DBKL 572076  
 ON MAP

SCALE 1" = 100'

CONSTRUCTION RECORD						SERVICE RECORD						
STATION	ELEVATION		Depth	MANHOLE	4-INCH "Y" BRANCHES		No. of Permit		House Number		DATE OF PERMITS	
	Ground	Grade			North West	South East	North West	South East	North West	South East	North West	South East
LAT 5 MAIN 4 S.W. 1.												
0+00				Exist M.H. 50' Str N.								
0+50	Beg 8" Clay Pipe											
1+00					Top 1+66.3		C36614		352			1-4-73
2+00					Top 1+70.3		C36197		349			12-1-72
	130.8	123.62	7.2	2+09 <sup>3</sup>	Top 2+67.7		C37653		348			3-12-73
3+00					Top 3+18.4		C40792		338			8-21-73
4+00					Top 4+06		C36195	981833	326			12-1-72
5+00							C3925-7		327			9-24-73
	131.9	129.22	7.7	5+09 <sup>2</sup> STUBS 4" STR N.W. 4" STR N.E.			C36165	C36164	6921K	6901		6-11-91
									Maple	Maple		11-30-72
												11-30-72
LAT 94 DRY CREEK MAIN 2 S.S. #12												
LINE 1												
0+00				0+00 Exist Wet Well								
0+09	Begin 8" Clay Pipe											
1+00					Top 1+26.0		C38764		Bldg 10			5-3-73
	190.7	179.27	11.4	1+37 <sup>2</sup>	Top 1+30.0		C38765		Unit 51			5-3-73
	190.7	179.45	11.1	1+74 <sup>2</sup>								
2+00					Top 2+11.1	Top 2+62.0	C38766	C38761	Bldg 10	Unit 52		5-3-73
	189.7	179.69	10.0	2+47 <sup>2</sup>	Top 2+27.0	M.H. 2-p	C38767	C38760	Bldg 10	Unit 53		5-3-73
3+00					Top 3+02.0	Top 3+36.0	C38762	C38763	Bldg 10	Unit 54		5-3-73
	189.1	179.89	9.2	3+43 <sup>2</sup>	Top 4+12.0		C38766		Bldg 10	Unit 55		5-3-73
4+00					Top 4+12.0	Top 4+51.0	C38768	C38769	Bldg 10	Unit 56		6-15-73
	189.2	180.24	9.0	4+66 <sup>2</sup>	Top 4+92.0		C38772		Bldg 10	Unit 57		6-20-73
5+00					Top 5+25.6		C38774		Bldg 10	Unit 58		5-3-73
	190.5	181.24	9.3	5+45 <sup>2</sup>	Top 5+04.0	5+98.0	C38773	C38776	Bldg 10	Unit 59		5-3-73
	191.1	181.89	9.2	5+88 <sup>2</sup>	M.H. 1-p	6+34.5	C38775	C38777	Bldg 10	Unit 60		5-3-73
6+00					Top 6+42.6	6+68.2	C38751	C38778	Bldg 10	Unit 61		5-3-73
7+00					Top 6+56.0	6+91.1	C38752	C38779	Bldg 10	Unit 62		5-3-73
	193.7	183.57	10.1	7+31 <sup>2</sup>	Top 7+03.0	7+49.0	C38753	C38756	Bldg 10	Unit 63		5-3-73
	194.4	184.13	10.3	7+79 <sup>2</sup>	Top 7+15.0	7+64.0	C38754	C38757	Bldg 10	Unit 64		5-3-73
8+00					Top 8+08.0	8+71.4	C38758	C38755	Bldg 10	Unit 65		5-3-73
	195.6	185.14	10.5	8+53 <sup>2</sup>	Top 8+12.0	9+33.5	C38759	C38781	Bldg 10	Unit 66		7-27-73
9+00					Top 9+07.0	9+65.9	C38780	C38782	Bldg 10	Unit 67		5-3-73
	195.5	186.52	9.0	9+69 <sup>2</sup>	Top 9+63.0	9+49.0	C40381	C40382	Bldg 10	Unit 68		8-2-73
					Top 9+17.0	8+98.0	C40383	C40384	Bldg 10	Unit 69		8-2-73
					Top 8+62.0		C40385		Bldg 10	Unit 70		8-2-73
LINE 2												
0+00	1+90.9	181.44	9.5	0+00 = 1+37 <sup>2</sup> LINE 1	Top 0+73.0	0+20.0	C39511	C40397	Bldg 10	Unit 71		6-14-73
1+00					Top 0+87.0	0+59.0	C39512	C40398	Bldg 10	Unit 72		8-2-73
	192.9	182.72	10.2	1+24 <sup>2</sup>	Top 1+35.0	1+48.0	C39513	C39514	Bldg 10	Unit 73		6-14-73
2+00					Top 2+13.0	Top 1+70.0	C40394	C40393	Bldg 10	Unit 74		8-2-73
	194.2	183.66	10.6	2+19 <sup>2</sup>	Top 2+43.0	Top 2+49.0	C40395	C40396	Bldg 10	Unit 75		8-2-73
	195.22	184.5	10.7	2+89 <sup>2</sup>	Top 1+06.0	Top 1+19.0	C40399	C40400	Bldg 10	Unit 76		8-2-73
3+00					Top 3+60.0	3+84.0	C40402	C40403	Bldg 10	Unit 77		8-2-73
4+00					Top 3+98.0	3+26.0	C40404	C40401	Bldg 10	Unit 78		8-2-73
	195.5	186.59	8.9	4+98 <sup>2</sup>	Top 2+82.0	3+24.0	C40388	C40387	Bldg 10	Unit 79		8-2-73
					Top 3+64.0	4+06.0	C40380	C40379	Bldg 10	Unit 80		8-2-73
					Top 4+18.0	4+52.0	C40378	C40377	Bldg 10	Unit 81		8-2-73
LINE 3												
0+00	189.3	180.40	8.9	0+00 = 4+66 <sup>2</sup> LINE 1	Top 0+27.0		C38770		Bldg 10	Unit 82		5-3-73
	189.7	180.80	8.9	0+99 <sup>2</sup> 8" STR N.	Top 0+47.0		C38771		Bldg 10	Unit 83		5-3-73
LINE 4												
0+00	195.22	184.43	10.8	0+00 = 2+89 <sup>2</sup> LINE 2	Top 0+82.0	0+86.0	C40391	C40390	Bldg 10	Unit 84		8-2-73
	194.8	185.29	9.5	0+77 <sup>2</sup>	Top 1+17.0		C40389		Bldg 10	Unit 85		8-2-73
LAT 119 S.S. #22												
0+00	111.3	105.06	6.2	0+00 Exist								
1+00												
	110.3	105.38	4.9	1+57 <sup>2</sup> 8" STR W. 6" STR SE.								

See Below  
These COM  
on line 2

Top C39477 - Dean Letter - 1441 To Rock Rd. (Club House) 6-12-73 (5+71) 11' NE of 5+88  
 M.H. 2-p - C 40386 - Bldg 5, Unit 22 - 8-2-73 (M.H. 2-p in 8+53)  
 Top C 40376 - Bldg 6, Unit 24 - 8-2-73 (4+63.9) 34.6' S of 4+98.5  
 Top C 40375 - Bldg 6, Unit 23 - 8-2-73 (4+92.5) 6' S of 4+98.5  
 C 38764 - Bldg 10 Unit 50 6-11-73 (OTH) 11' W of M.H. 0+00 on line 2  
 C 38765 - Bldg 10 Unit 51 6-11-73 (OTH) 7' W of M.H. 0+00 on line 2