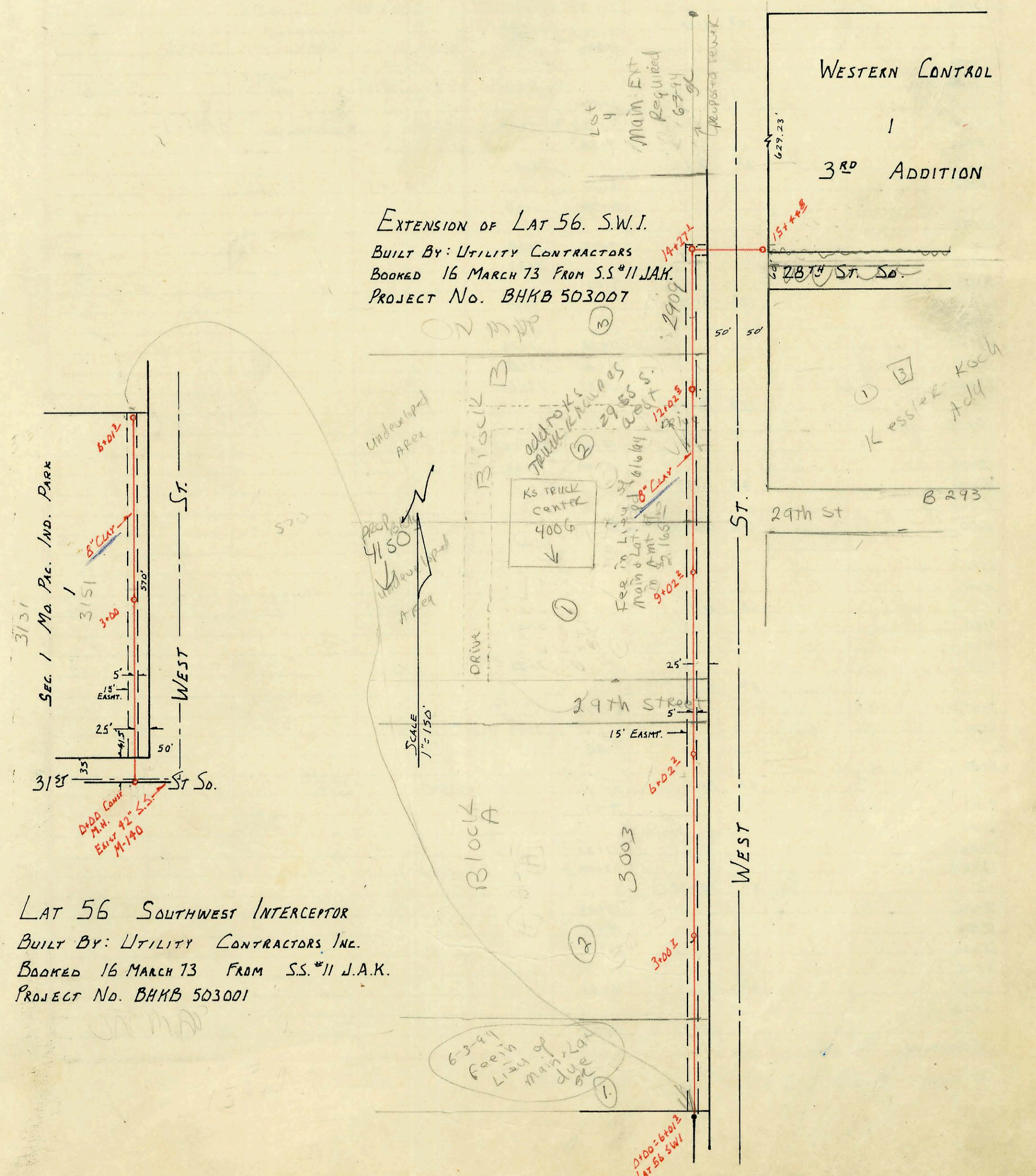
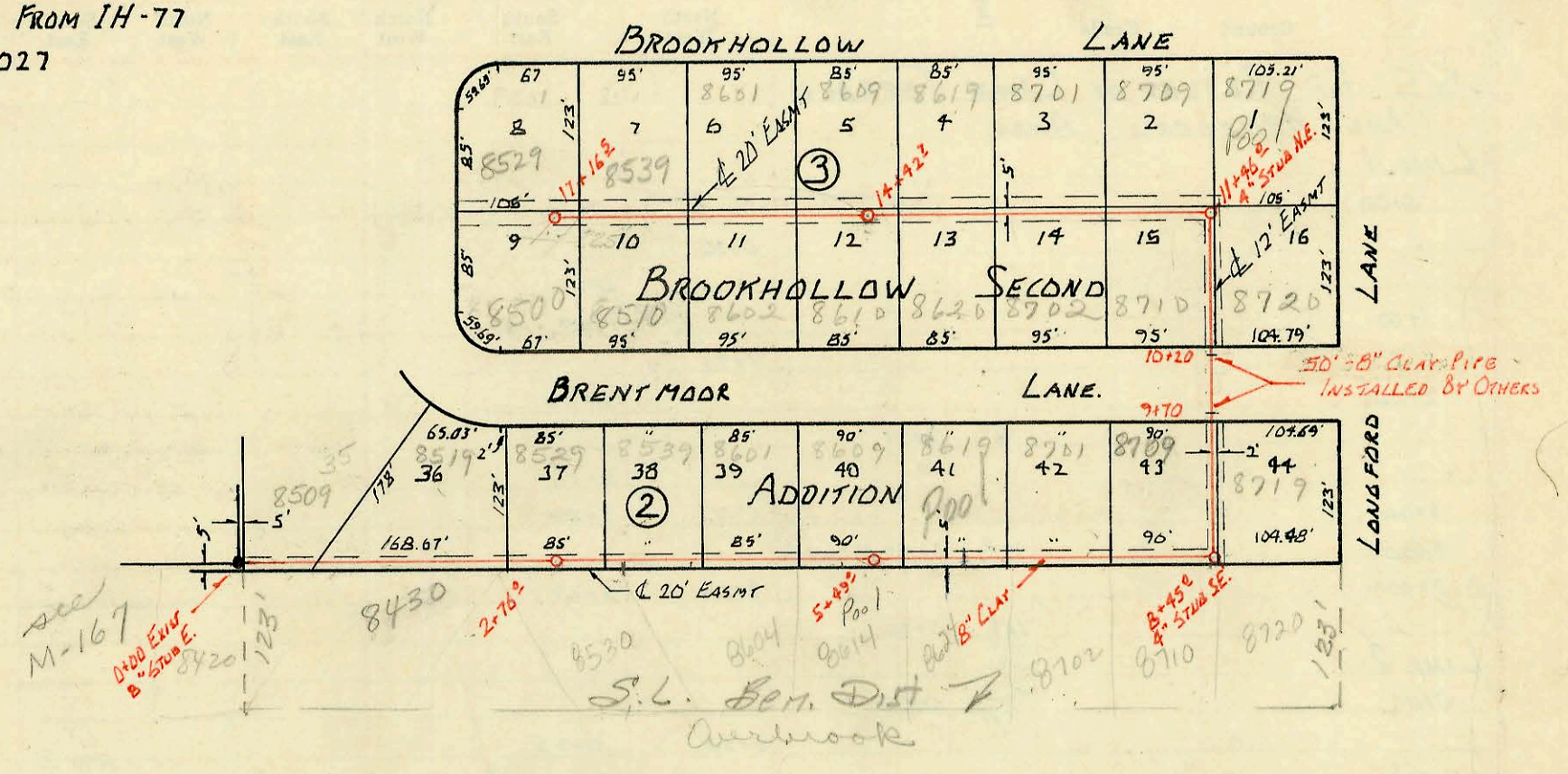
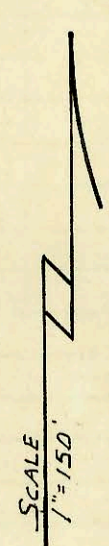


LAT 17 SUB 9 W.I.S.
BUILT BY: W.B. CARTER CONST. CO. INC.
BOOKED 28 FEB 73 FROM IH-77
PROJ. NO. DBKL570027

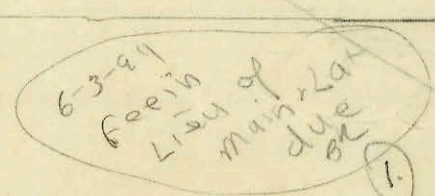
ON MAP



EXTENSION OF LAT 56. S.W.I.
BUILT BY: UTILITY CONTRACTORS
BOOKED 16 MARCH 73 FROM S.S.#11 J.A.K.
PROJECT NO. BHKB 503007

LAT 56 SOUTHWEST INTERCEPTOR
BUILT BY: UTILITY CONTRACTORS, INC.
BOOKED 16 MARCH 73 FROM S.S.#11 J.A.K.
PROJECT NO. BHKB 503001

ON MAP



D100-65012
LAT 56 SWI

CONSTRUCTION RECORD						SERVICE RECORD						
STATION	ELEVATION		Depth	MANHOLE	4-INCH "Y" BRANCHES		No. of Permit		House Number		DATE OF PERMITS	
	Ground	Grade			North West	South East	North West	South East	North West	South East	North West	South East
LAT 17 SUB 9 W.I.S.												
0+00	163.1	150.9	12.2	0+00 EXT 8" SUB E								
1+00					top 1+95	top 1+19	C40830	C46011	8519	8430	8-22-73	7-31-74
2+00												
3+00	168.44	151.32	17.1	2+76 ²	M.H. Jap		C40159		8529	8539	7-20-73	
4+00					top 3+90	top 3+30.4	C41128	C50096	8539	8530	9-7-73	6-27-75
5+00					top 4+40		C40144		8491		11-7-73	
6+00	161.8	151.72	10.1	5+99 ²	top 5+31	top 4+36	C40942	C48501	8604	8614	6-8-73	2-27-75
7+00					top 5+27			C46367	8614			8-27-74
8+00					top 6+29	top 6+15	C42192	C47534	8619	8624	11-29-73	11-26-74
9+00					top 6+93	top 6+95	C4229	C44013	8701	8701	11-29-73	4-25-74
10+00					top 8+16	top 8+18	C46006	C51092	8709	8710	7-31-74	3-5-76
11+00	157.8	152.25	5.6	8+45 ² 4" SUB S.E.	top 8+57	Stab in MH	C42192	C48363	8719	8720	11-9-73	3-5-75
9+70	BEGIN 8" CLAY INSTALLED BY OTHERS											
10+00												
10+20	END 8" CLAY INSTALLED BY OTHERS											
11+00												
12+00	161.8	152.95	8.8	11+46 ² 4" SUB N.E.	top 11+27		C39495	C39496	8719	8720		6-13-73
13+00					top 11+74	top 12+11	C47704	C45715	8709	8710	12-9-74	7-15-74
14+00					top 13+14	top 12+89	C38461	C46592	8709	8702	4-23-73	9-11-74
15+00	162.2	153.54	8.7	14+42 ²	top 13+59	top 13+70	C40708	C40624	8619	8620	8-17-73	8-15-73
16+00					top 14+79.3	top 14+67	C49959	C38403	8609	8610	6-17-75	8-15-73
17+00					top 15+42	top 15+71	C41063	C42016	8601	8602	9-5-73	11-1-73
18+00					top 16+39	top 16+34	C41601	C42018	8539	8540	10-9-73	11-1-73
19+00	166.5	157.39	9.1	17+16 ²	top 17+06	top 17+10	C41125		8529	8530	9-7-73	
								C44193	8500			3-29-74
LAT 56 S.W.I.												
0+00	101.4	90.00	11.4	0+00	M.H. TAP		C57225		3151 S. West			3-16-73
1+00					TAP		C39064		315 S. West			5-16-73
2+00												
3+00	101.8	90.90	10.9	3+00								
4+00												
5+00												
6+00	102.4	91.80	10.6	6+01 ²	6+15 TAP		18091		3151 S. West			4-10-87
EXTENSION OF LAT 56 S.W.I.												
0+00	102.4	91.80	10.6	0+00=6+01 ²	LAT 56 S.W.I.							
1+00												
2+00												
3+00												
4+00	103.2	92.70	10.5	3+00 ²								
5+00												
6+00					4+43.76		6689		3003 S. West St			10-6-82
7+00	103.3	93.60	9.7	6+02 ²								
8+00												
9+00												
10+00	102.4	94.50	7.9	9+02 ²	4" PVC 40 10+24.2		948497		4006 W 29th			6-6-74
11+00												
12+00												
13+00	103.0	95.40	7.6	12+02 ²	6 13+14.9		C76713		2909 S. West St			3-6-80
14+00	104.4	96.30 OUT 96.08 IN	7.7 7.9	14+27 ²								
15+00	102.9	96.65	6.3	15+44 ²	M.H. Jap		C37998		2810 S. West			3-29-73

4 1522 7-20-91 3003 S. West - Gadsby - N/C - 35.8 tap. 6" PVC 40.