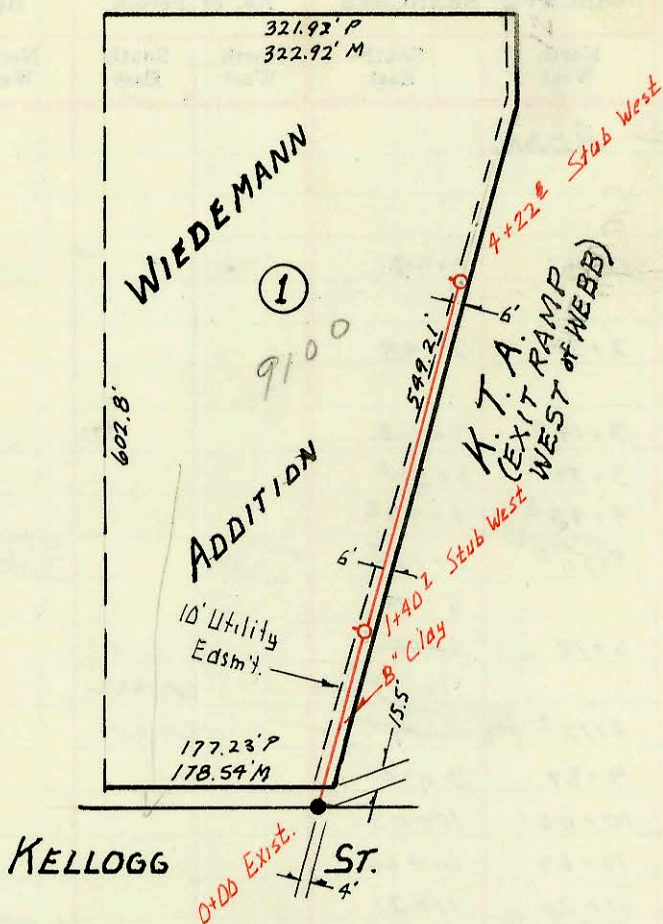
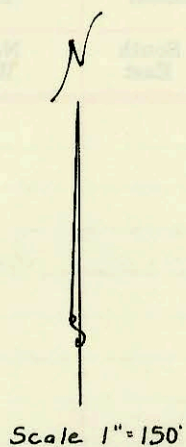


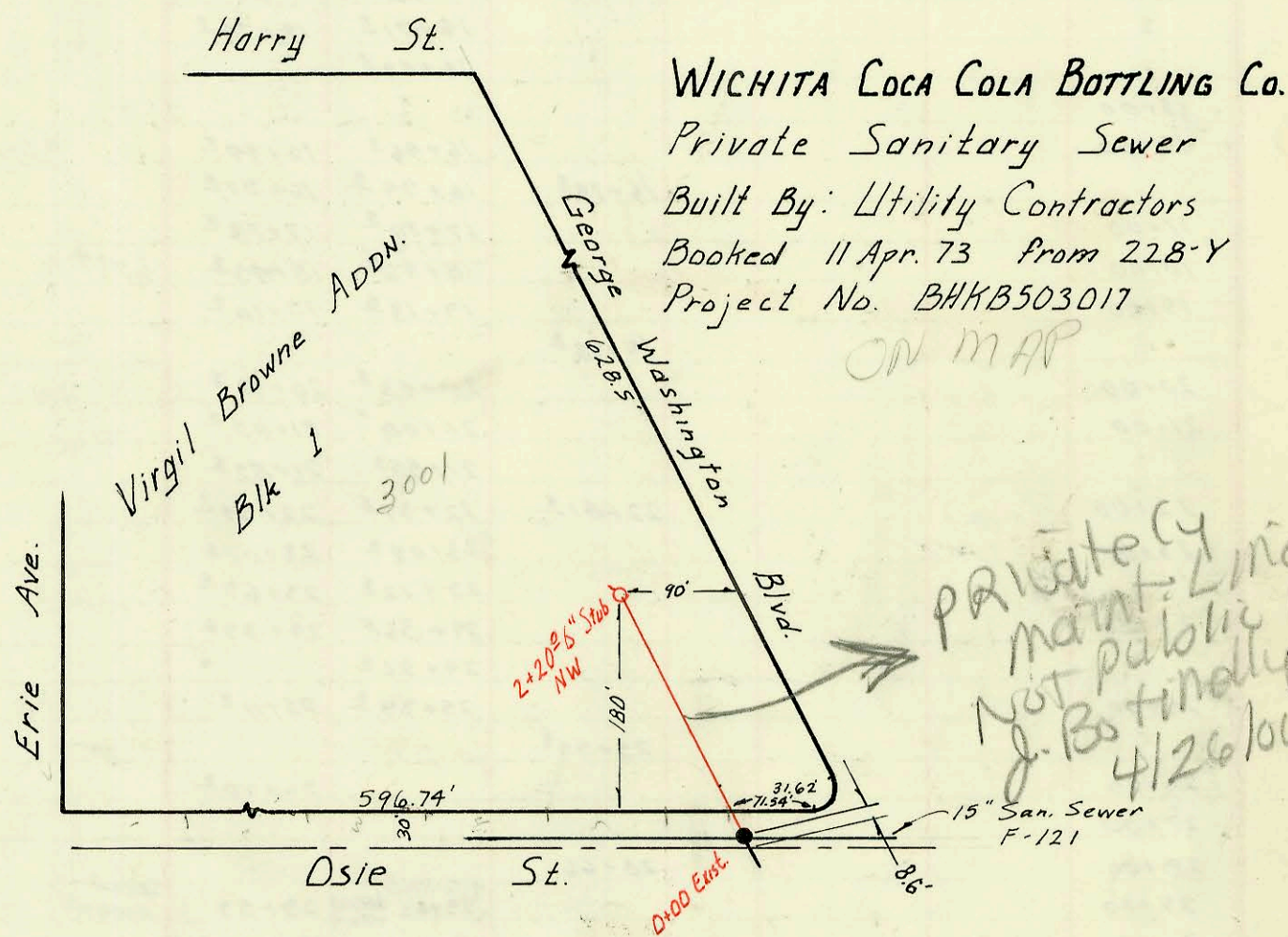
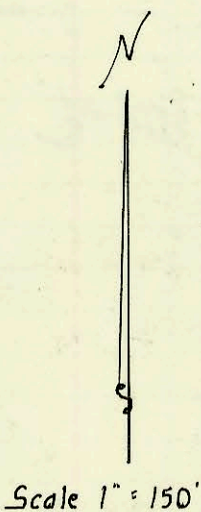
SERVICE RECORD

CONSTRUCTION RECORD



*Ramada Inn*  
**JACK OF DIAMONDS INN**  
 Private Sanitary Sewer  
 Built by: George Pearson  
 Booked April 11, 1973 From I.H. 7B  
 Project No. BHK503009

ON MAP



**WICHITA COCA COLA BOTTLING Co.**  
 Private Sanitary Sewer  
 Built By: Utility Contractors  
 Booked 11 Apr. 73 From 228-Y  
 Project No. BHK503017

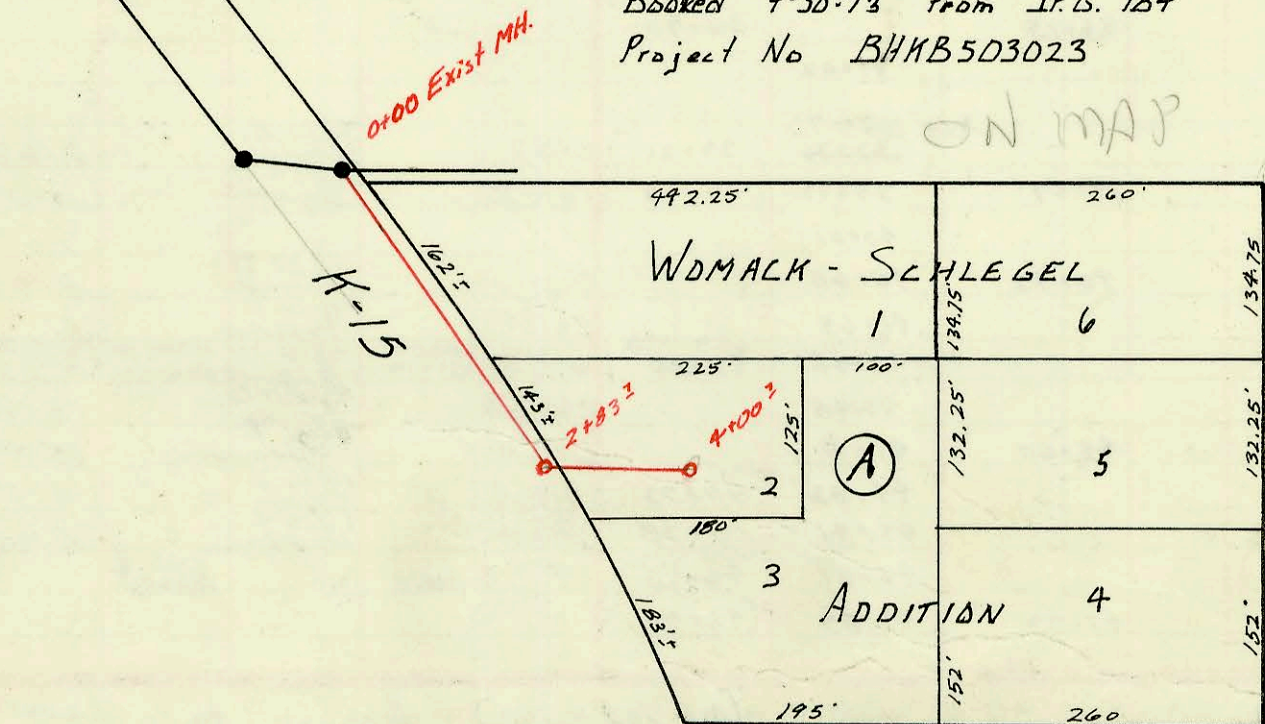
ON MAP

Private Line  
 maint. Line  
 NOT Public Pack  
 J. Bastinally  
 4/26/04

Crystal Ave.

**LAT 6 MAIN 14 W.I.S. (Private)**  
 Booked 4-30-73 from I.F.G. 1B4  
 Project No. BHK503023

ON MAP



CONSTRUCTION RECORD						SERVICE RECORD						
STATION	ELEVATION		Depth	MANHOLE	4-INCH "Y" BRANCHES		No. of Permit		House Number		DATE OF PERMITS	
	Ground	Grade			North West	South East	North West	South East	North West	South East	North West	South East
PAGE 185 CONTINUED												
LINE 4												
0+00				0+00 = 5+87 Line 3 top 0+44 0+46	0+96.06		C47708	16941	4720 Krueger	4720 Battin	12-9-74	9-10-86
1+00												
2+00					2+99							
3+00					3+01							
			7 1/2	3+68					4729 Battin		7-29-79	
4+00					top 4+32				4749 N. Battin		10-3-75	
5+00			7 3/4	4+80	4" SCH 40				see below 4761 N. Battin		6-26-70	10-24-73
					5+12	5+00	2000-01398	C41840	4810 N R Harding			10-18-74
					5+50.6	5+28			4801 N R Battin			10-24-73
6+00				4" SCH 40 5+65	5+87.6		2001-02680	C41842	4819 N. Battin		10/24/01	
			9 3/4	6+80	6+70	top 6+73 6+99			4819 N. Battin			6-20-73
7+00					7+95	7+92			4829 N. Battin			6-20-73
8+00					8+92	top 9+00 8+95			4840 N. Harding	4839 N. Battin	4-15-74	10-24-73
9+00					9+87.6	9+90.6						
10+00			8 1/2	10+70	top 10+22				4853 N. Battin			6-21-73
LINE 5												
0+00			7 1/2	0+00 = 5+87 Line 3	0+44.0				5120 E Harry		11-23-76	
1+00			6 1/2		0+91.7 top				4700 Krueger		2-29-84	
2+00			6 3/4									
3+00			6 1/2	3+20	2+14	2+16 4" SCH 40 2+78 tap				5135 E. Harry		7-11-75
LINE 6												
0+00			9 1/4	0+00 = 2+09 Line 1	0+91.6	0+35			5025 E. 46th St.		1-27-76	
1+00			6 3/4	1+44	0+95							
JACK OF DIAMONDS INN Private San. Sewer												
0+00	170.26	158.18	12.1	0+00 Exist.								
1+00				1+40 2" stub west M.H. Tap			2000-01580		9100 E. Kallagay		6-7-73	4-19-73
2+00	173.44	158.60	14.8									
3+00							2000-01574		9100 E. Kallagay		6-17-73	4-19-73
4+00	169.49	159.46	10.0	4+22 2" stub west Stub exist	top 2+96.8		2000-01578 238419		9100 E. Kallagay		6-17-73	4-19-73
WICHITA COCA COLA BOTTLING CO. PRIVATE SAN. SEWER												
0+00		99.37		0+00 Exist.								
1+00							988707		3001 (pre-treatment line) E. Harry		5-26-78	
2+00	108.32	100.25	8.1	2+20 6" Stub NW.			C38238		3001 E. Harry (addr)		4-11-73	
LAT 6 MANHOLE 14 W.I.S.												
0+00	119.8	112.36	7.4	0+00 Exist.								
1+00												
2+00	IN 122.9 out 121.7	113.60 113.50	8.9 8.2	2+83 1/2								
3+00												
4+00	125.3	115.28	10.0	4+00 2" 4" Stub			C38507 C38506		3560 S.E. Battin 3550 S.E. Battin		8-14-73	8-14-73

98-87271 5126/98 3001 E Harry - MH tap OK per sewer maint  
This line approved by B-Gasman, Pre-treatment

R-2000-01398 - 4770 N Krueger - Reddi Rootr - 6/13/00 - Repaired wye in middle of sewer - install 20