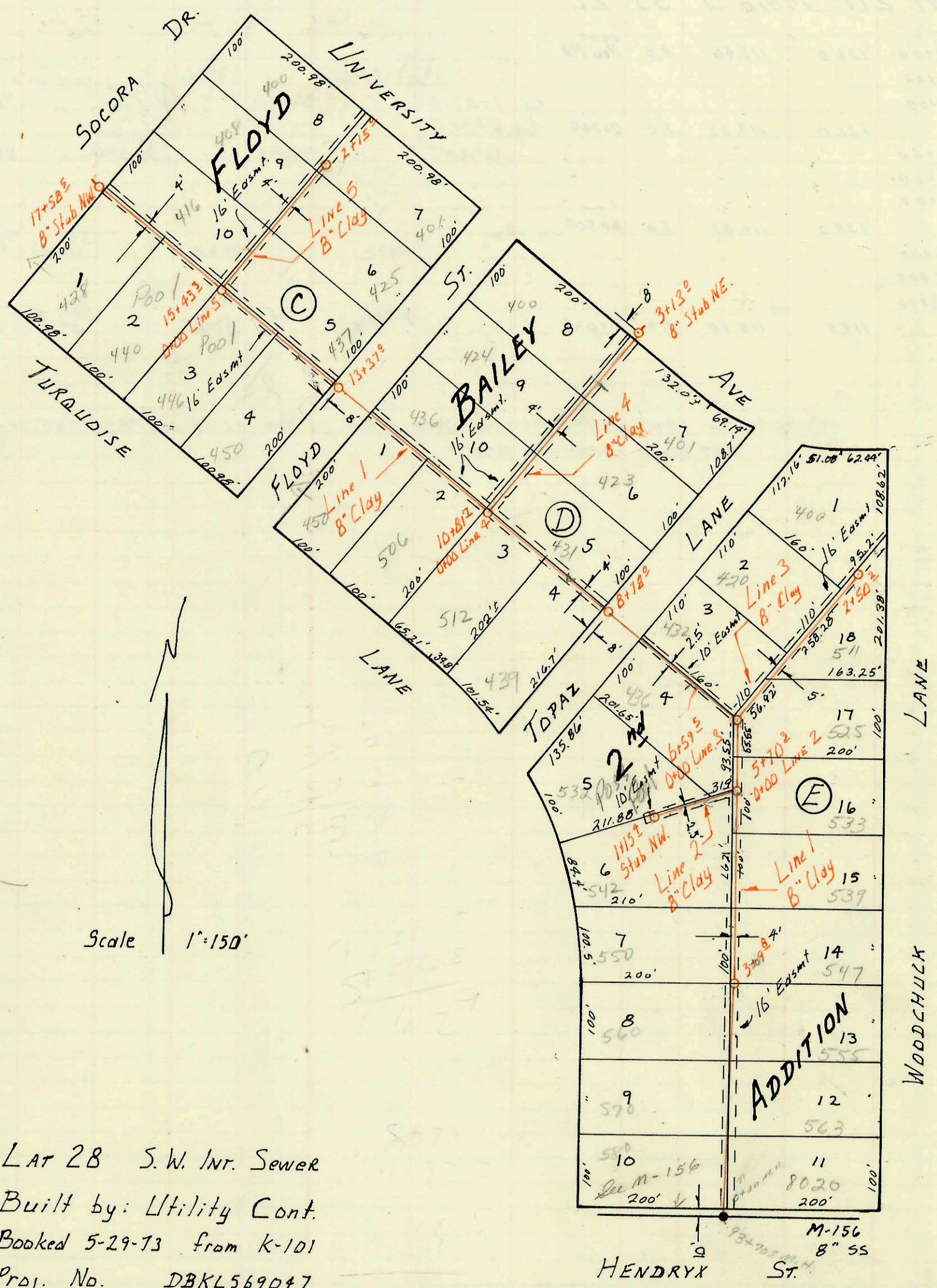


SERVICE RECORD				CONSTRUCTION RECORD			
STATION	VERTICAL	HORIZONTAL	REMARKS	STATION	VERTICAL	HORIZONTAL	REMARKS



Lat 28 S.W. Int. Sewer
 Built by: Utility Cont.
 Booked 5-29-73 from K-101
 Proj. No. DBKL569047

ON MAP

CONSTRUCTION RECORD						SERVICE RECORD							
STATION	ELEVATION		Depth	MANHOLE	4-INCH "Y" BRANCHES		No. of Permit		House Number		DATE OF PERMITS		
	Ground	Grade			North West	South East	North West	South East	North West	South East	North West	South East	
Lat 28 SWIS.													
Line 1													
0+00	138.7	130.35	8.3	Exist.									
1+00					top 1+27 ⁰		C40328		(See Misc. 533 S. Woodchuck)			7-31-73	
2+00					top 1+27 ⁰	top 1+41 ⁰	C37425	C37711	570	539 S.		2-26-73	8-15-73
3+00					top 2+39.4	top 2+38.0	C37343	11638	560	Woodchuck		2-21-73	8-1-84
4+00	138.9	130.97	7.9	3+09 ⁰	top 3+82 ⁰	top 3+63.8	C37161	12203	550	547	Woodchuck	2-12-73	10-10-81
5+00					top 4+87 ⁰				542			4-8-74	
6+00	139.3	131.50	7.8	5+70 ³									
7+00	138.8	131.67	7.1	6+59 ⁵									
8+00					top 7+33 ⁰								
9+00	138.5	132.16	6.3	8+78 ⁰									
10+00					top 9+29 ⁰								
11+00	139.4	132.56	6.8	10+81 ³	top 10+53 ⁴		C41440		512			9-28-73	
12+00					top 11+14 ⁴		C42002		506 R			11-1-73	
13+00					top 12+10 ⁴		C37857		450			2-22-73	
14+00	138.8	133.08	5.7	13+37 ⁰	top 11+72 ⁵		C42003		436			11-1-73	
15+00					top 14+05.0	top 14+18 ⁰	C38283	C39984	450	427	Blond	4-11-73	7-11-73
16+00	139.8	133.49	6.3	15+43 ³	top 14+65.5		C39151		446			5-22-73	
17+00					top 15+53.8		C66062		442			4-25-78	
18+00					top 16+57 ⁴		C39231		458			4-25-73	
19+00	139.9	133.92	6.0	17+58 ⁵									
Line 2													
0+00	139.25	131.48	7.7	Exist.									
1+00	139.4	131.96	7.4	1+15 ⁰	4" Stub N.W.		C38477		532			4-24-73	
Line 3													
0+00	138.8	131.70	7.1	Exist.	top 0+59		C37436		432			2-26-73	
1+00					top 1+21 ⁰		C39970		428			7-10-73	
2+00					top 1+21				511 S.				8-1-77
3+00	140.6	132.70	7.9	2+50 ⁰	4" Stub N.W.		C38234		400			4-11-73	
Line 4													
0+00	140.0	132.70	7.3	Exist.	4" SCH 40 ⁰⁰		2001-01623		431 R			7-5-01	
1+00					top 0+75 ⁰		C37126		424 S.			2-9-73	
2+00					top 1+43.8	top 1+15 ⁰	C63121	C45874	438			9-19-77	7-23-74
3+00					top 2+26.9		C38976		437			4-24-73	
4+00	139.9	133.32	6.6	3+13 ⁰	top 2+29 ⁰		C32999		400			3-29-73	
Line 5													
0+00	139.8	133.48	6.3	Exist.	top 0+77 ⁰		C39260		416			6-1-73	
1+00					top 1+40	top 1+33 ⁴	C41197	C42243	408 S.			9-10-73	11-13-73
2+00					top 2+20 ⁰		C40039		401			7-10-73	7-13-73
3+00	139.9	134.36	5.5	2+15 ⁰	top 2+11.4		5619		400			4-15-80	

MC # 14769 563 S. Woodchuck (Buckley) 10-1-85 (17310)

* 506 S. TOP QUAYS - Replaced 70 within 4' of Main with 4" sch 40 PVC.