

Lot 212 - Main 5 - S.S. #22

Built by: W.B. Carter Const. Co.

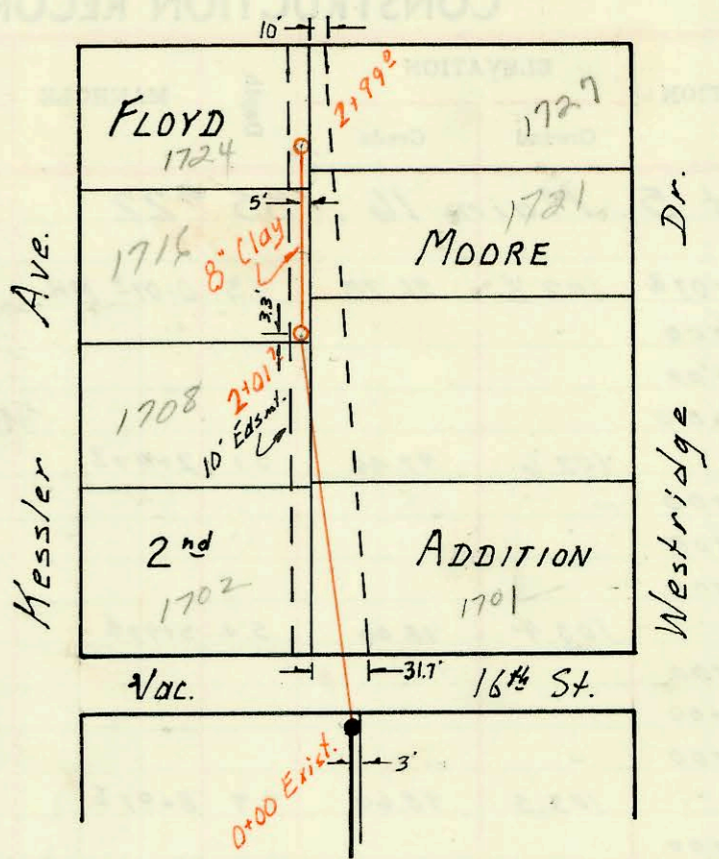
Booked 5-29-73 From K-111

Proj No. DBKL 57202B

ON MAP



Scale 1" = 100'



Plat Book 6-50

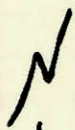
Lot 211 Main 5 S.S. #22

Built by: Mid-States Const. Co.

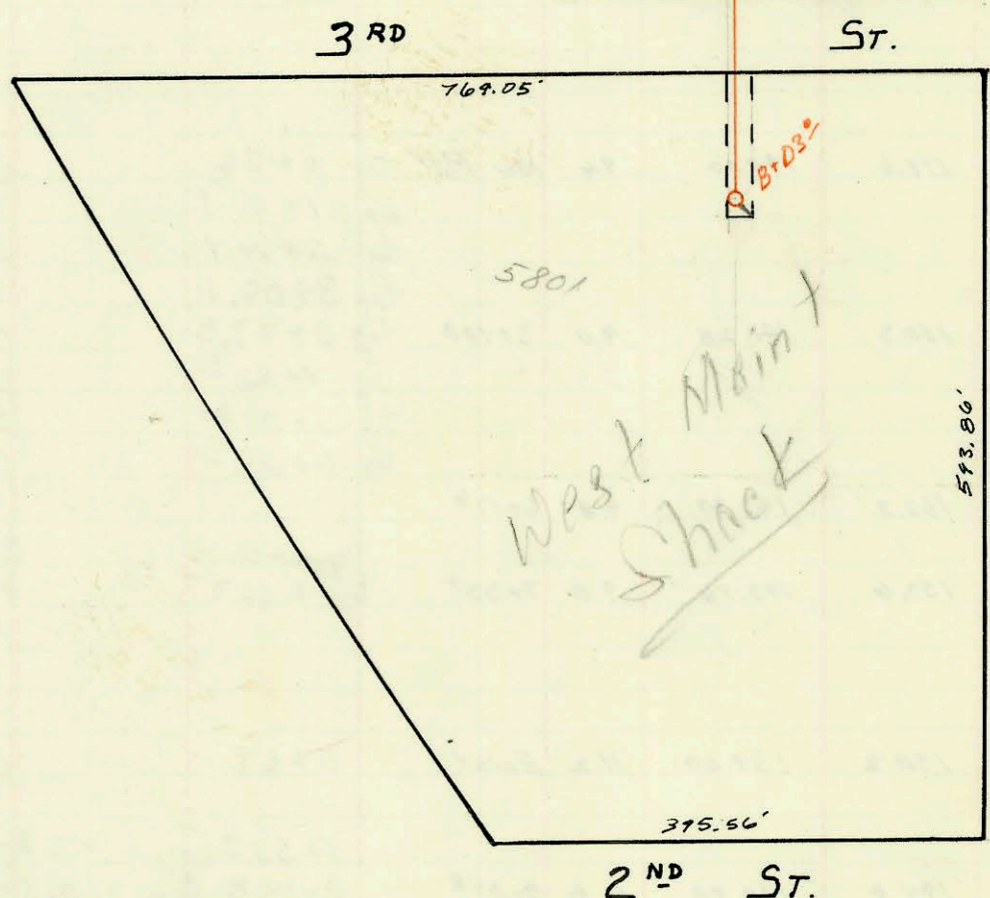
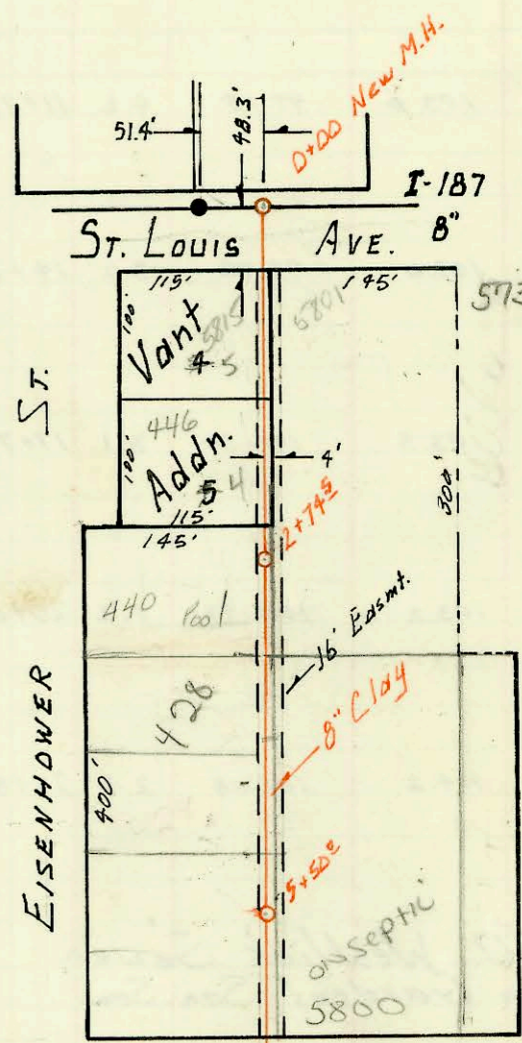
Booked 5-30-73 from K-105

Proj No. DBKL 572024

ON MAP



Scale 1" = 150'



I-235

CONSTRUCTION RECORD						SERVICE RECORD						
STATION	ELEVATION		Depth	MANHOLE	4-INCH "Y" BRANCHES		No. of Permit		House Number		DATE OF PERMITS	
	Ground	Grade			North West	South East	North West	South East	North West	South East	North West	South East
Lat 212 - Main 5 - SS #22												
0+00	128.4	122.00	6.4	Exist. <sup>0+00</sup>	0+60.5 <sup>Tap</sup>	0+56.3 <sup>Tap</sup>	C38985	C47409	1782 N. <sup>7th</sup>	1701 <sup>Wentbridge</sup>	5-14-73	11-18-74
1+00					1+70.3 <sup>Tap</sup>		C55314		1708 N. <sup>Kessler</sup>		5-11-76	
2+00					2+43.2 <sup>Tap</sup>		C52545		1716 N. <sup>Kessler</sup>		11-21-75	
	130.5	123.00	7.5	2+01.3 <sup>Tap</sup>	2+91.7 <sup>Tap</sup>	2+68.7 <sup>Tap</sup>	C37868	122 36	1724 N. <sup>Kessler</sup>	1721 <sup>Wentbridge</sup>	3-28-78	10-12-84
	132.3	123.60	8.7	2+99.0 <sup>Tap</sup>	2+97.0 <sup>Tap</sup>			C45671				7-11-74
Lat 211 Main 5 SS #22												
0+00	122.0	113.46	8.5	0+00 <sup>New MH.</sup>								
1+00												
2+00					1+27.6 <sup>Tap</sup>		C41164		5815 W. <sup>St. Louis</sup>		9/11/73	7-5-73
	121.0	114.02	7.0	2+74.8 <sup>Tap</sup>	2+21.5 <sup>Tap</sup>		C47764		446 N. <sup>Lincoln</sup>			1/7/75
3+00					3+73.0 <sup>Tap</sup>		19492		4281 <sup>Eisenhour</sup>		11/03/87	
4+00												
5+00												
	120.2	114.57	5.6	5+50.0								
6+00								4+22		5800 <sup>W 3rd</sup>	see below	3-4-97
7+00								99 36457				
8+00												
	119.5	115.10	4.4	8+03.0				C38555		5801 W. <sup>3rd St.</sup>		4-27-73
<p>97-3695-7- 5800 W 3rd - 4" SCH 40 TAP 128' N of MH, EXIST CO ABS, 1H45, 1V45                  NOT SURE WHICH MH USED</p>												