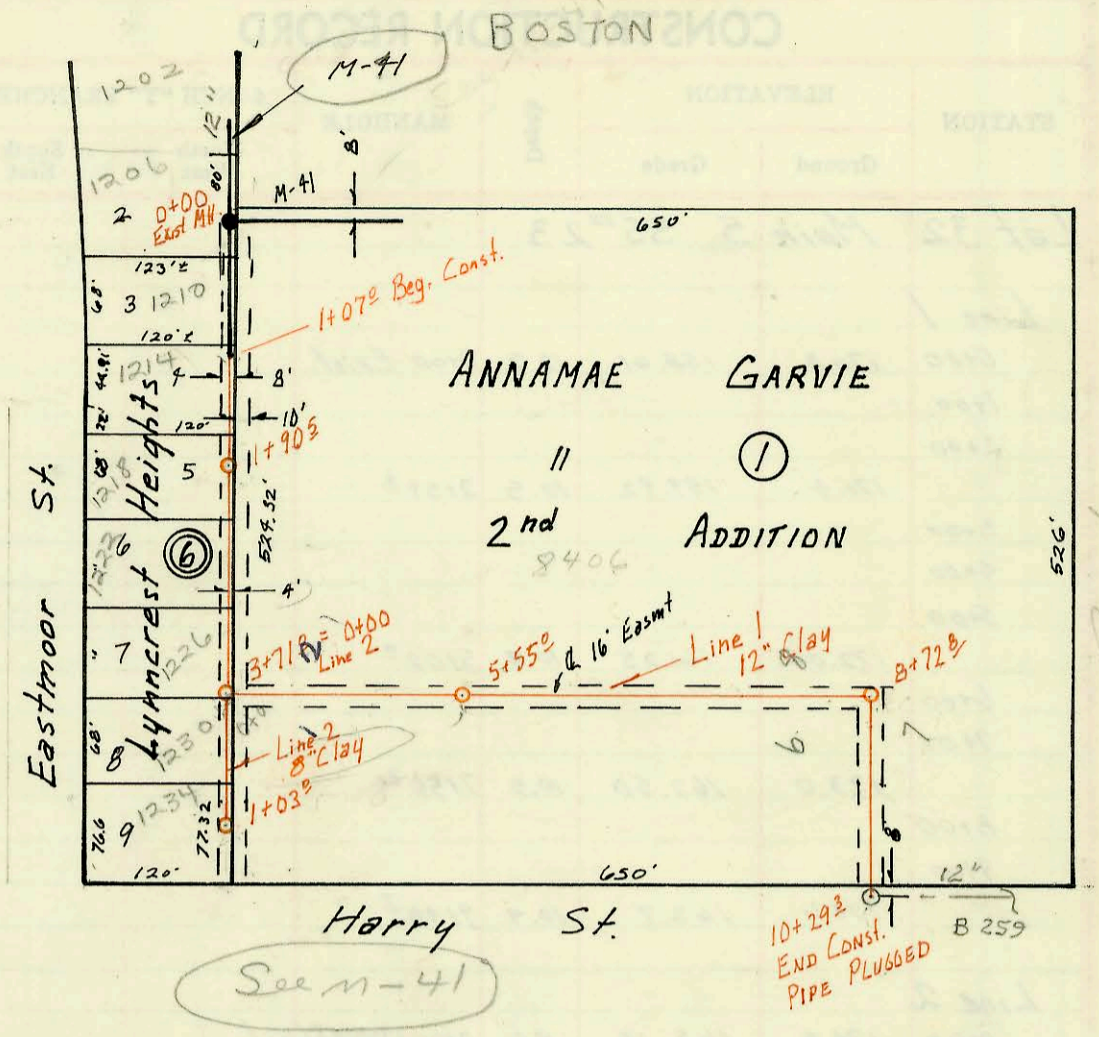
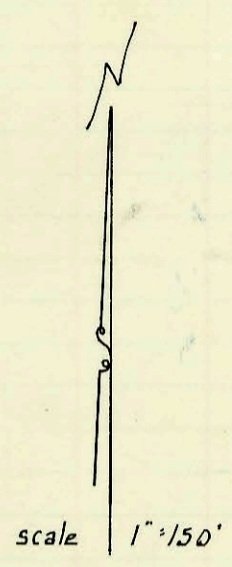
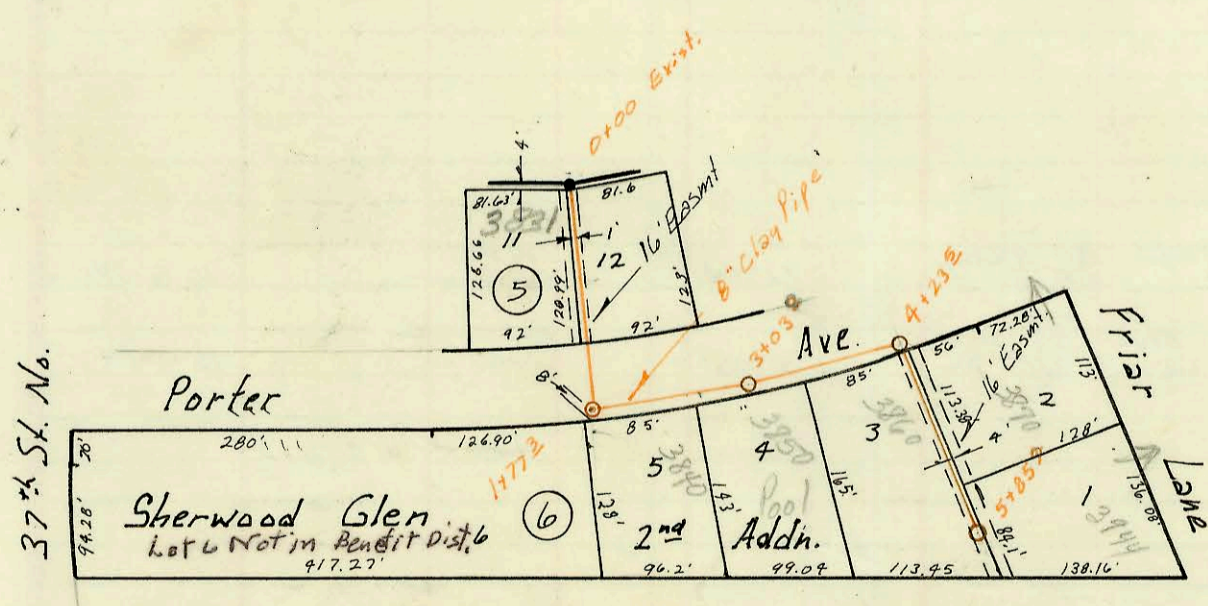
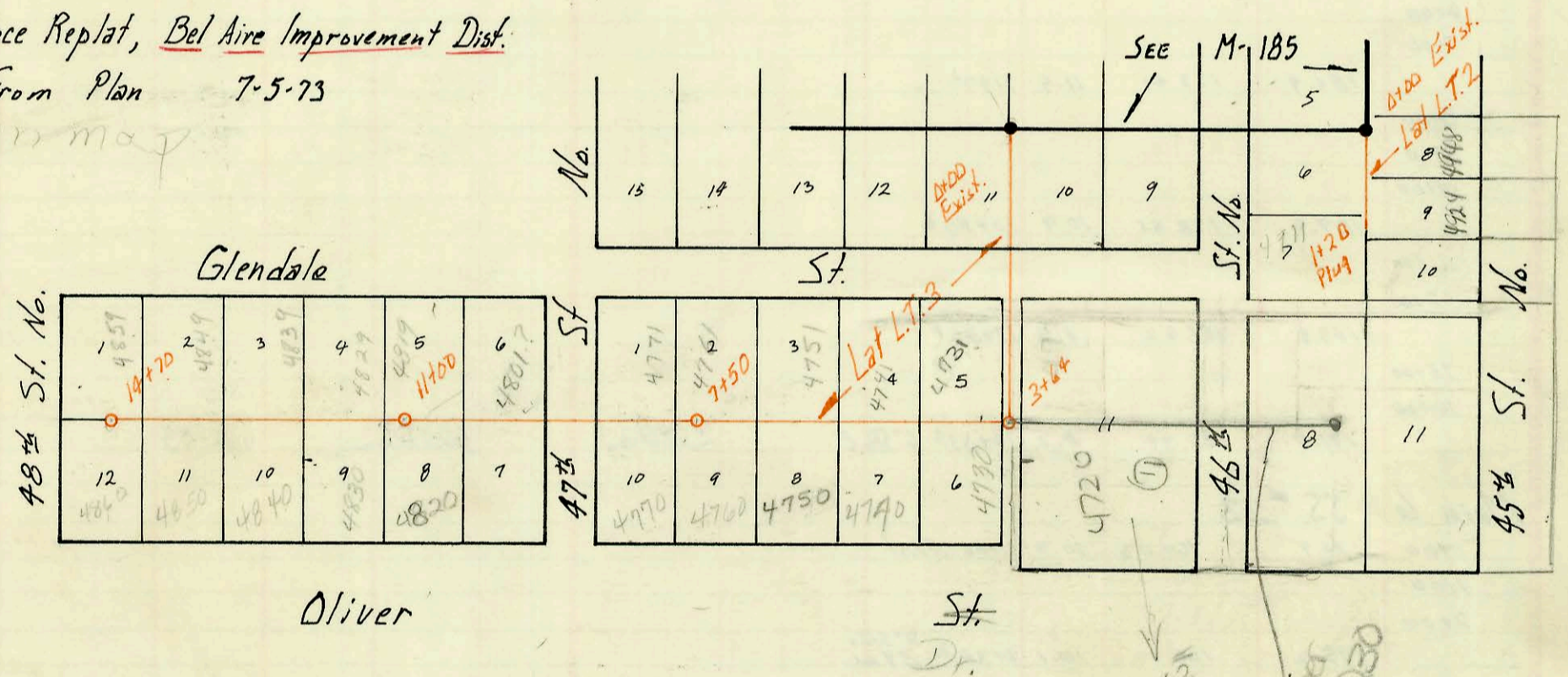
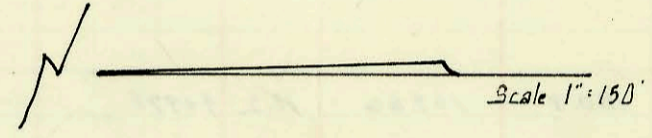


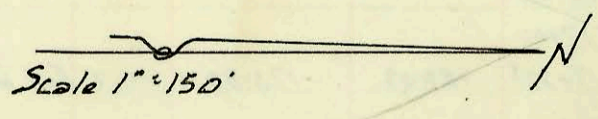
Extension to (Private)
 Lat 7, Sub 11, W. I. S.
 Built by: Utility Const. Co.
 Booked 6-22-73 from 277-Y
 Proj No. BHK6503010
 ON MAP



Sanitary Sewer Extensions for
 Lawn Terrace Replat, Bel Aire Improvement Dist.
 Booked From Plan 7-5-73
 ON MAP



Lat. 6 Sub 21 SS. # 22
 Built by: Utility Cont. Inc.
 Booked 8-20-73 from K-111
 Proj No. DBKL565026
 ON MAP



CONSTRUCTION RECORD						SERVICE RECORD						
STATION	ELEVATION		Depth	MANHOLE	4-INCH "Y" BRANCHES		No. of Permit		House Number		DATE OF PERMITS	
	Ground	Grade			North West	South East	North West	South East	North West	South East	North West	South East
Lat 7 Sub 11 W19.												
Line 1												
0+00				0+00 Exist MH								
1+00												
1+07.2	155.5	145.53	10.0	1+00 ²	Top 1+40 ⁵		C40020		1214 Eastman		7-12-73	
2+00					Top 2+00 ¹		C40021		1218 Eastman		7-12-73	
3+00					Top 2+64 ⁵		C40022		1222 Eastman		7-12-73	
	159.8	146.07	8.7	3+71 ²	Top 3+44 ²		C40023		1226 Eastman		7-12-73	
4+00												
5+00					wye 4+81.2		C40143		8406 E. Harry (Bldg. 2)		7-17-73	
	161.33	146.83	14.5	5+55 ²								
6+00					wye 8+09.8		C40142		8406 E. Harry (Bldg. 1)		7-19-73	
7+00					wye 7+82.9		C40144		8408 E. Harry (Bldg. 6)		7-19-73	
8+00					wye 8+22.8		C40146		8406 E. Harry (Bldg. 8)		7-19-73	
	161.3	147.78	13.5	8+72 ²	6" M.H. Top		C40145		8406 E. Harry (Bldg. 7)		7-19-73	
9+00					Top 9+52.2		C42188		79 Mitchell		11-9-73	
10+00												
10+29.2												
End Const Pipe Plugged												
Line 2												
0+00	159.8	146.50	8.3	0+00-3+71° Line 1								
1+00	150.1	146.90	9.2	1+03 ²								
Sanitary Sewer Extensions - Lawn Terrace Replat												
Lat L.T. 2												
0+00		204.43		0+00 Exist	0+38.8		C40024		1230 Eastman		7-12-73	
1+00					0+99.0	4" SCH 40 0+06	C40025	8502 01131	1234 Eastman	4948 E 45th	7-12-73	5800
1+20					1+07.6	4" SCH 40 1+03	C56760	8600 01137	4911 E 45th	4924 E 45th	7-19-76	5800
1+20 pipe plugged												
Lat L.T. 3												
0+00	220.9	205.9	15.0	0+00 Exist								
1+00												
2+00						4" SCH 40 3+06.0		2910	4720 Edman			10-26-75
3+00					3+54 Top	3+30.0	2736		4730 N. Oliver	4731 Glendale	41792	
	217.6	207.9	10.2	3+64	Top 3+43	3+20.0	C52361	99-0130	4740 N. Oliver	4741 Glendale	11-21-75	12-19
4+00					Top 4+85	4+65	C44855	63536	4750 N. Oliver	4751 Glendale	5-15-74	10-14-77
5+00					wye 5+90	5+90	C41844		4750 N. Oliver	4751 Glendale		10-24-73
6+00					Top 6+95	6+95	C45713	63576	4750 N. Oliver	4751 Glendale	7-15-74	10-18-74
7+00												9-29-75
	219.0	209.0	10.0	7+50	Top 7+90	7+90	C44856	64193	4760 N. Oliver	4761 Glendale	5-13-74	10-24-73
8+00					Top 8+110		C42293		4770 N. Oliver	4771 Glendale	11-15-73	
9+00					Top 9+45	9+45		269091	4801 N. Glendale			10-25-78
10+00					Top 10+38	10+38	C39927		4820 N. Oliver		7-11-73	
11+00	219.8	210.4	9.4	11+00	Top 11+84	11+85	C58847	C48125	4830 N. Oliver	4831 Glendale	11-29-76	1-17-75
12+00					Top 12+10	12+45.8	C42292	C47196	4840 N. Oliver	4841 Glendale	11-15-73	10-30-74
13+00					Top 14+01	13+40	C42271	C47197	4850 N. Oliver	4851 Glendale	11-15-73	10-30-74
14+00					Top 14+61.3	14+63	C39656	C47198	4860 N. Oliver	4859 N. Glendale	6-22-73	10-30-74
	221.6	211.88	9.8	14+70								
Lat 6 Sub 21 SS No. 22												
0+00	132.51	127.90	5.1		Top 0+61		C43208		3831 Parker			1-29-74
1+00	130.89	127.60	3.3									
	129.9	127.75	2.2	1+77 ²								
2+00	130.3	127.90	2.4		Top 2+49		C40983		3840 Parker			8-30-73
3+00					Top 2+63		C40984		3850 Parker			8-30-73
	131.53	128.10	3.9	3+03 ²								
4+00					Top 3+74		C40985		3860 Parker			8-30-73
	131.76	128.35	3.9	4+23 ²								
5+00					Top 5+11		C40986		3870 Parker			8-30-73
	131.53	128.77	2.8	5+85 ²	Top 5+78		C48823		3944 Inwood		3-25-75	

C 43199 - Top 4819 N Glendale (11+07.5) - 1-29-74 Service
 02714 - 10-18-94 - 4761 N Glendale - Ol. Tied onto Exist. Top 55 Ft so. M.H. 4" PVC 40 1/4" Fall - 6+95
 Top - C 40142 - 44-46 - 8406 E. Harry - 7-19-73 Flag Hook