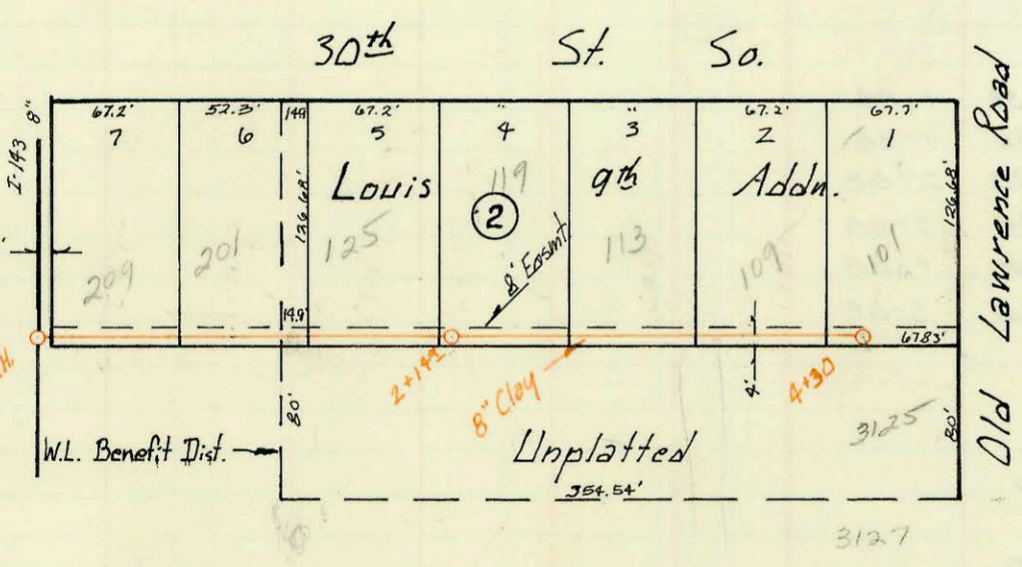
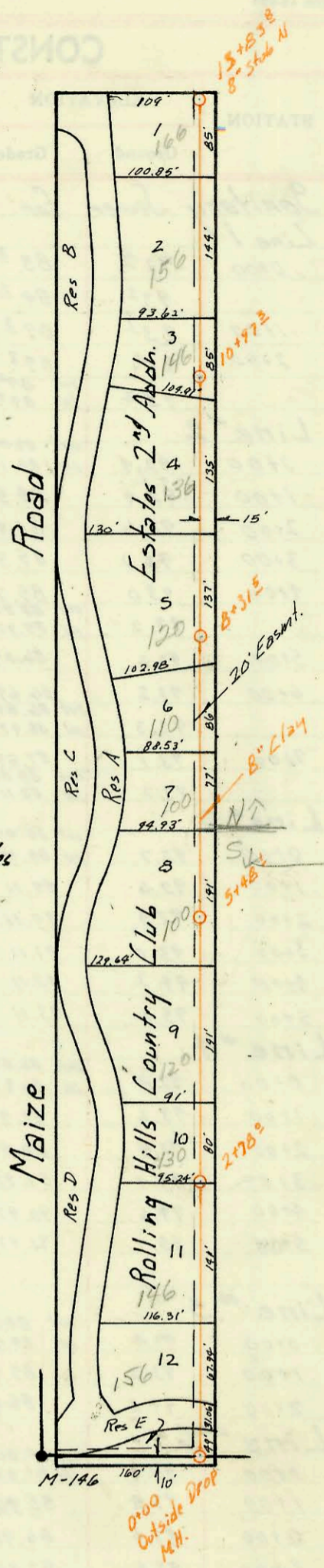


Lat 55 Main 17 SS#22
 Built by: Mid-States Const. Co.
 Booked Aug 20, 1973 from K-111
 Proj No. DBKL570060
 ON MAP

Scale 1"=150'

Sanitary Sewer for Rolling Hills Country Club Estates Second Addn.
 Built by Duling Const. Co.
 Booked B-21-73 from K-102
 Proj No AAKB502053
 ON MAP

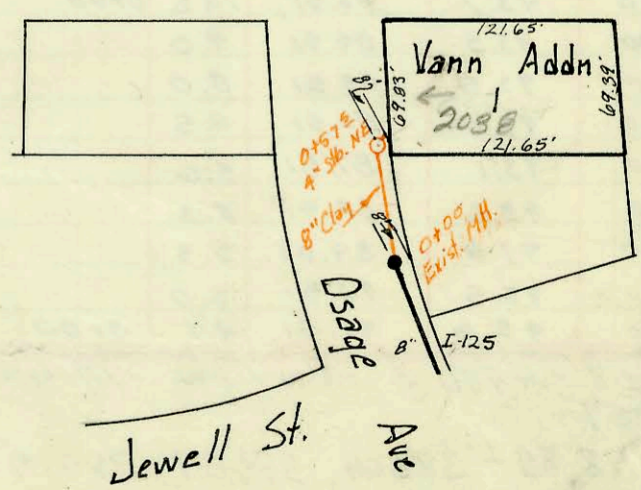
Scale 1"=150'



Lat 122 SS#22
 Built by: Utility Contractors
 Booked B-28-73 from SS JK#9
 Proj No DBKL573031
 ON MAP

Scale 1"=100'

Lat 44 Main 2 SS#22
 Built by: George Pearson
 Booked B-28-73 from SS#13 JK.
 Proj No BHKBS03049
 ON MAP



Scale 1"=100'

CONSTRUCTION RECORD

SERVICE RECORD

STATION	ELEVATION		Depth	MANHOLE	4-INCH "Y" BRANCHES		No. of Permit		House Number		DATE OF PERMITS	
	Ground	Grade			North West	South East	North West	South East	North West	South East	North West	South East
Lat 55, Main 17, SS #22												
0+00	129.0	119.92	9.1									
1+00	129.14	120.32	8.8		Stub S.W. top 0+85		C61489	C39652	3200 N. Charles	1906 W. 31st No.	6-8-77	6-22-73
	130.05	120.51	9.5	1+47 [±] 4" Stob SW	top 1+72			C39664	3218 N. Charles		6-22-73	
2+00	129.68	120.77	8.9		top 2+38			C39553	3226 N. Charles		6-18-73	
3+00	129.53	121.07	8.5									
	129.42	121.30	8.1	3+77 [±]								
	129.34	121.46	7.9	3+97 [±]								
4+00												
5+00	129.10	121.87	7.2									
6+00	129.45	122.17	7.3									
7+00	130.27	122.97	7.8		4" Stob N.W.		C48542		3300 N. Charles		3-4-75	
	130.02	122.53	7.5	7+18 [±]	4" Stob S.W.		C48559		3318 N. Charles		3-5-75	
8+00	129.9	122.77	7.1		top 8+46		C39837		3310 N. Charles		7-8-73	
9+00	130.48	123.07	7.4									
10+00	131.29	123.37	7.9									
	131.10	123.43	7.7	10+17 [±]	4" Stub W.		C40954		3330 N. Charles		8-29-73	
11+00	131.42	123.67	7.8		top 10+94		C39813		3334 N. Charles		6-29-73	
12+00	132.11	123.97	8.1		top 11+60		C39709		3320 N. Charles		6-26-73	
13+00	133.24	124.27	9.0									
	133.64	124.33	9.3	13+20	4" Stub W		C49632		3400 N. Charles		2-25-74	
Sanitary Sewer for Rolling Hills Country Club Estates 2 nd Addn. <i>went ya west ya</i>												
0+00	129.1	122.36	6.7	0100	Outside Driv MH over Exstline	top 0+78		C40767		1565, main apt. B		8-20-73
1+00	129.2	122.66	6.5			top 1+13		C40766	C40765	1562, main apt. A		8-20-73
2+00	129.5	122.96	6.5			top 1+85		C40764	C40763	1468, main apt. C		8-20-73
	132.3	123.20	9.1	2+78 [±]		top 2+54		C40762	C40761	1468, main apt. A		8-20-73
3+00	132.4	123.26	9.1			top 3+35		C40760	C40759	1305, main apt. B		8-20-73
4+00	132.7	123.56	9.1			top 4+23		C40758	C40757	1205, main apt. C		8-20-73
5+00	131.1	123.86	7.2			top 5+15		C40755	C40754	1008, main apt. D		8-20-73
	132.3	124.01	8.3	5+98 [±]		top 4+92		C40756	C40755	1205, main apt. A		8-20-73
6+00	132.4	124.16	8.2			top 6+71		C40733	C40752	1008, main apt. B		8-20-73
7+00	132.7	124.46	8.2			top 7+02		C40732	C40734	1008, main apt. A		8-20-73
8+00	132.0	124.76	7.2			top 7+48		C40735	C40739	1108, main apt. B		8-20-73
	132.1	124.85	7.3	8+31 [±]		top 8+92		C40737	C40738	120 N. main apt. B		8-20-73
9+00	131.0	125.06	5.9			top 9+27		C40736	C40742	120 N. main apt. A		8-20-73
10+00	129.4	125.36	4.0			top 10+58		C40740	C40741	136 N. main apt. A		8-20-73
	130.5	125.66	4.8	10+97 [±]		top 11+03		C40745	C40743	146 N. main apt. B		8-20-73
11+00						top 11+87		C40749	C40744	158 N. main apt. D		8-20-73
12+00						top 12+21		C40748	C40747	156 N. main apt. C		8-20-73
13+00						top 12+85		C40746		166 N. main apt. H		8-20-73
	131.3			13+83 [±]		top 13+34		C40751		166 N. main apt. B		8-20-73
						top 13+63		C40750		166 N. main apt. A		8-20-73
Lat 122 SS #22												
0+00	93.9	87.37	6.5	0100		top 0+69		C40916		209 W. 30th So.		8-27-73
1+00	93.9	87.57	6.3			top 1+19		C40915		207 W. 30th So.		8-27-73
2+00	94.1	87.77	6.3			top 2+01		C40914		125 W. 30th So.		8-27-73
	93.8	87.80	6.0	2+14.9		top 2+52		C40913		119 W. 30th So.		8-27-73
3+00	93.2	87.97	5.2			top 3+35		C40912		113 W. 30th So.		8-27-73
4+00	93.4	88.17	5.2			top 3+88		C40911		109 W. 30th So.		8-27-73
	93.6	88.23	5.4	4+30.0		top 4+14		C40910	C41928	701 W. 30th So.	3125 S. Oldbourne Rd	8-27-73 10-29-73
Lat 44 Main 2 SS #22												
0+00	99.6	95.44	4.2									
	99.3	95.61	3.7	0+57 [±]	4" Stob NE			C42323		2038 S. Osage		11-20-73

92-6511-7 316192 3240 N. Charles - (Garage) - Bowlers Pkwy
 kick out gauge pipe into long line
 4" SDR 20 - 3' 45" 1-4" C.O
 horse line clay top (3+97.5) N