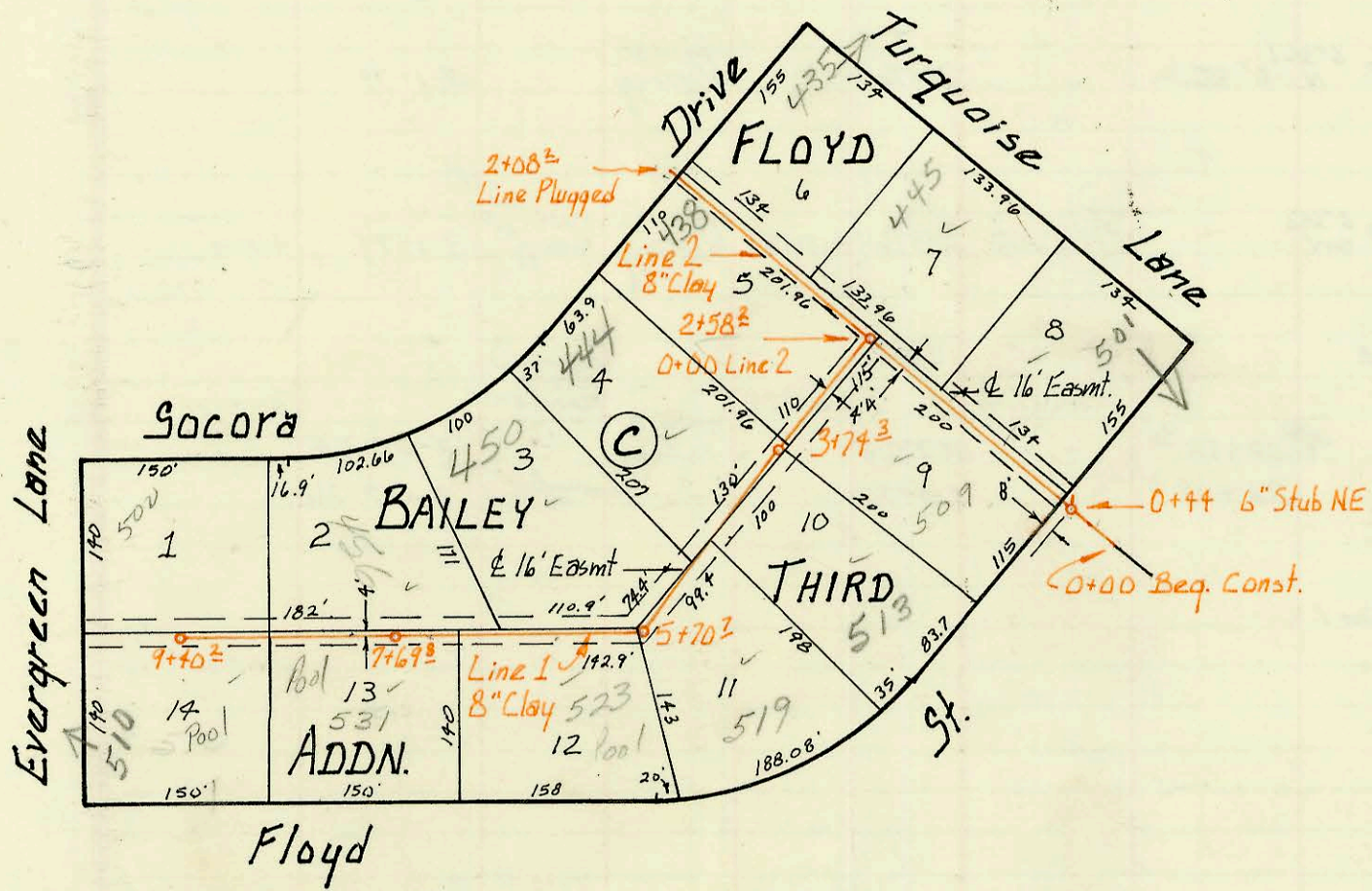
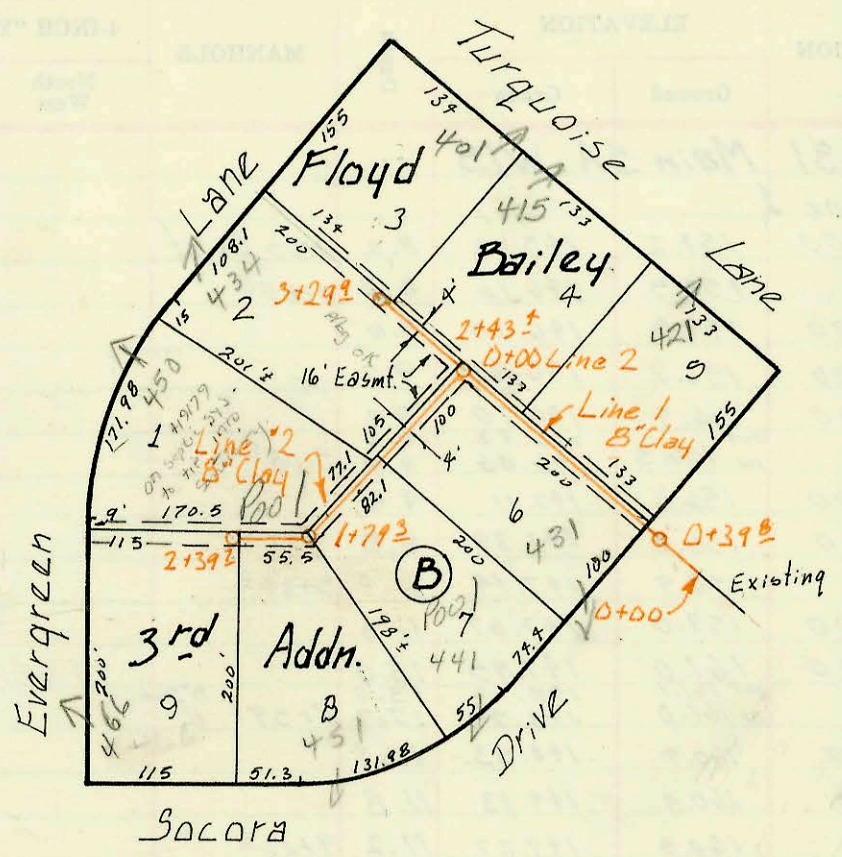
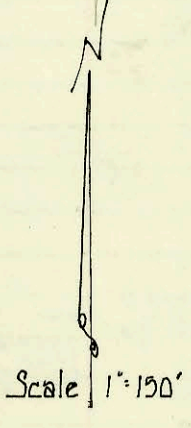


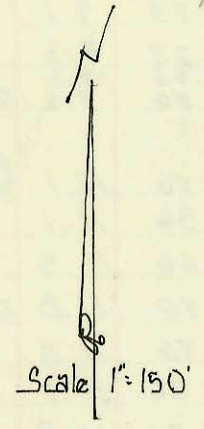
Lat 61, S.W.I.
Built by: W.B. Carter Const. Co.
Booked 12-73 from K-102
Proj. No. DBKL 573039

on map



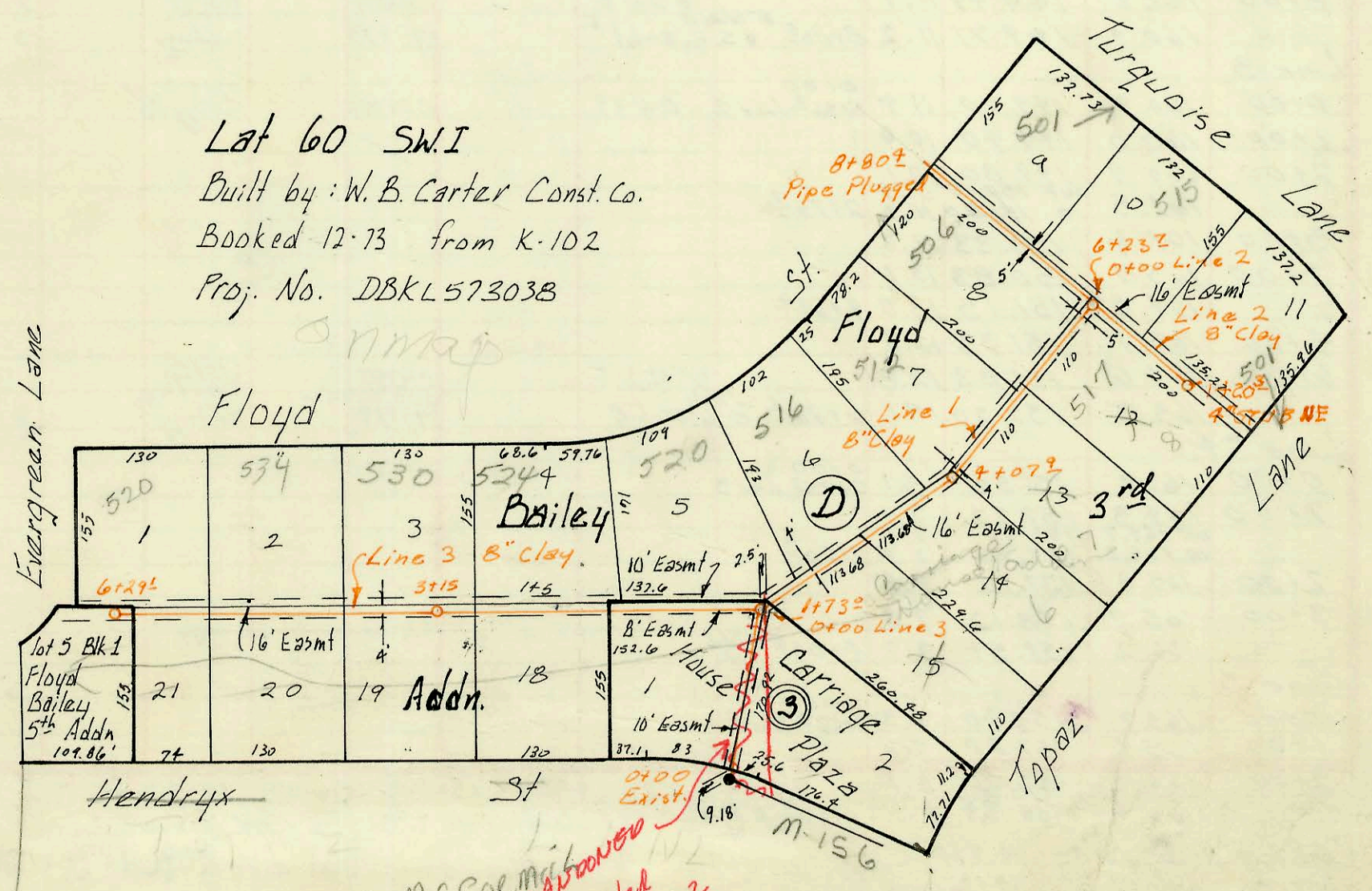
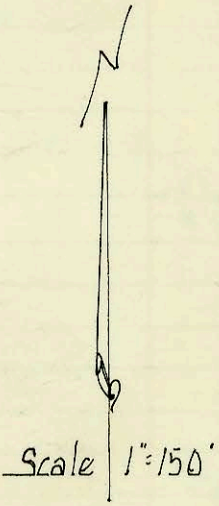
Lat 58 S.W.I.
Built by: Utility Cont. Inc.
Booked 12-73 from K-111
Proj. No. DBKL 573021

on map



Lat 60 S.W.I
Built by: W. B. Carter Const. Co.
Booked 12-73 from K-102
Proj. No. DBKL 573038

on map



8444 McCoemick
Home Depot
ABABanner
Relocated
see p-32

CONSTRUCTION RECORD

SERVICE RECORD

| STATION | ELEVATION | | Depth | MANHOLE | 4-INCH "Y" BRANCHES | | No. of Permit | | House Number | | DATE OF PERMITS | |
|------------|------------|------------|-------|---------|---------------------|------------|---------------|------------|------------------|----------------|-----------------|------------|
| | Ground | Grade | | | North West | South East | North West | South East | North West | South East | North West | South East |
| LAT 60 | | | | | | | | | | | | |
| 0+00 | 139.0 | 132.23 | 6.7 | 0+00 | | | | | | | | |
| 1 | 139.2 | 132.38 | 6.8 | | | | | | | | | |
| | 139.0 | 132.59 OUT | 6.5 | 1+73.0 | | | | | | | | |
| | | 132.49 IN | 6.4 | | | | | | | | | |
| 2 | 138.8 | 132.63 | 6.2 | | | | | | | | | |
| 3 | 139.1 | 132.78 | 6.3 | | top 3+26.1 | | C42554 | | 516 | | 12-3-73 | |
| | in 139.5 | 132.94 | 6.6 | 4+07.9 | top 4+18.2 | | C44021 | | 512 | | 3-19-74 | |
| | out 139.6 | 133.04 | 6.6 | | | | | | 7th fl | | | |
| 5 | 138.5 | 132.18 | 6.3 | | | | | | | | | |
| 6 | 138.7 | 133.33 | 5.4 | | | top 6+19.2 | C60889 | | 517 | | 4-27-77 | |
| | in 139.2 | 133.36 | 5.8 | 6+23.2 | | top 5+34.7 | C51607 | | 515 | | 9/30/75 | |
| | out 139.5 | 133.54 | 5.7 | | | | | | Surgeon | | | |
| 8+80.2 | 139.5 | 133.66 | 5.8 | | top 8+04.1 | | C43456 | | 501 | | 2-12-74 | |
| | End L. No. | | | | | | | | Surgeon | | | |
| LINE NO. 2 | | | | | | | | | | | | |
| 0+0 | 139.5 | 133.97 | 6.0 | 0+00 | | | | | | | | |
| 1+0 | 138.9 | 133.76 | 5.1 | | | | | | | | | |
| | 139.0 | 133.82 | 5.2 | 1+20.3 | 4" stub N.E. | | C64353 | | 501 | | 12-7-77 | |
| | | | | | | | | | Topog | | | |
| LINE NO. 3 | | | | | | | | | | | | |
| 0+00 | 139.0 | 132.59 | 6.4 | | top 0+30.6 | | C44020 | | 520 | | 3-19-74 | |
| 1 | 139.4 | 132.79 | 6.6 | | | | | | Flayd | | | |
| 2 | 139.1 | 132.99 | 7.1 | | | | | | | | | |
| 3+00 | 139.2 | 133.19 | 6.0 | 3+15.0 | | | | | | | | |
| | 139.4 | 133.22 | 6.0 | | | | | | | | | |
| 4 | 140.7 | 133.56 | 7.1 | | | | | | | | | |
| 5 | 140.1 | 133.76 | 6.1 | | | | | | | | | |
| 6 | 141.2 | 134.36 | 6.8 | | 4+58.6 | | C51734 | | 534 | | 10-7-75 | |
| | 141.9 | 134.48 | 7.4 | 6+29.1 | 5+80.1 | | C61353 | | 520 S. Evergreen | | 6-1-77 | |
| LAT 58 | | | | | | | | | | | | |
| 0+00 | 139.3 | 133.78 | 5.5 | | | | | | | | | |
| 1+44 | 139.0 | 133.85 | 5.1 | 0+44 | 6" Stub NE | 6" Stub NE | | | | | | |
| 1 | 139.8 | 133.93 | 5.9 | | | | | | | | | |
| 2 | 140.0 | 134.09 | 5.9 | | | top 1+79.5 | 56880 | | 501 | | 7-7-76 | |
| 2+58.2 | 139.7 | 134.16 | 5.5 | 2+58.2 | | 2+27.3 | 56579 | | 445 Surgeon | | 7-7-76 | |
| 3 | 139.6 | 134.33 | 5.3 | | | | | | | | | |
| 3+74.2 | 139.2 | 134.44 | 4.8 | 3+74.2 | top 3+40.3 | 3+71.7 | C42537 | C59948 | 444 Summa | 507 Flayd | 11-30-73 | 2-16-77 |
| 4 | 139.3 | 134.48 | 4.8 | | | top 4+33.9 | C42535 | C42535 | 513 Surgeon | 513 Surgeon | 11-30-73 | 11-30-73 |
| 5+00 | 139.7 | 134.63 | 4.8 | | | | | | | | | |
| 5+70.2 | 139.7 | 134.73 | 5.0 | 5+70.2 | top 5+46.7 | | C42538 | | 450 Surgeon | | 11-30-73 | |
| 6 | 139.4 | 134.78 | 4.6 | | | top 5+42.0 | C45609 | | 519 | | 7-8-74 | |
| 7+00 | 139.4 | 134.93 | 5.0 | | | top 6+37.2 | C45609 | | 533 | | 7-8-74 | |
| 7+69.8 | 140.8 | 135.03 | 5.8 | 7+69.8 | | | | | 500 Surgeon | | | |
| 8 | 141.4 | 135.12 | 6.3 | | top 8+23.2 | top 9+35.2 | 12518 | C52871 | 436 Surgeon | 500 Surgeon | 11-9-84 | 12-18-75 |
| 9+40.2 | 143.8 | 135.54 | 8.3 | 9+40.2 | | top 9+34.2 | 9-18397 | C42539 | 500 Surgeon | 510 Surgeon | 11-6-75 | 11-30-73 |
| Line 2 | | | | | | | | | | | | |
| 0+00 | 139.6 | 134.16 | 5.4 | 0+00 | 2+58.2 | top 0+52.0 | C42536 | | 438 | | 11-30-73 | |
| 1+00 | 139.9 | 134.31 | 5.6 | | | top 1+27.7 | C56633 | | 438 | | | |
| | 139.0 | 134.47 | 4.5 | 2+08.2 | | | | | 438 | | 7-12-76 | |
| LAT 61 | | | | | | | | | | | | |
| Line 1 | | | | | | | | | | | | |
| 0+00 | 138.91 | 134.47 | 4.4 | 0+0 | | | | | | | | |
| 0+39.8 | 138.9 | 134.54 | 4.4 | 0+39.8 | | | | | | | | |
| 1 | 139.4 | 134.62 | 4.8 | | | top 1+35.5 | C43094 | | 421 | | 1-22-74 | |
| 2 | 140.0 | 134.77 | 5.2 | | | 1+98.4 | 16598 | | 415 Surgeon | | 7-14-86 | |
| 2+43.4 | 140.6 | 134.85 | 5.7 | 2+43.4 | | | | | | | | |
| 3 | 141.0 | 135.00 | 6.0 | | 3+25.4 | 3+19.4 | 5236 | 8755 | 434 S. Evergreen | 401 Surgeon | 2-23-82 | 7-20-83 |
| 3+29.9 | 141.5 | 135.10 | 6.4 | 3+29.9 | | | | | | | | |
| Line 2 | | | | | | | | | | | | |
| 0+00 | 140.7 | 134.95 | 5.7 | EXIST. | | | | | | | | |
| 1 | 140.8 | 135.10 | 5.7 | 1+79.3 | | | | | | | | |
| 2 | 140.5 | 135.38 | 5.1 | | | | | | | | | |
| 2+39.7 | 140.1 | 135.5 | 4.9 | 2+39.7 | | | | | | | | |
| 0+00 | 140.7 | 134.95 | 5.7 | 0+00 | EXIST. | | | | | | | |
| 1+00 | 140.8 | 135.10 | 5.7 | | | top 1+12.2 | C43856 | | 431 S. Summa | | 12-26-73 | |
| | out 140.2 | 135.10 | 5.0 | | | top 1+50.2 | C43473 | | 441 S. Summa | | 2-13-74 | |
| | in 140.4 | 135.22 | 5.2 | 1+79.2 | | top 1+87.2 | C71381 | C53310 | 450 S. Surgeon | 451 S. Surgeon | 4-24-79 | 1-21-76 |
| 2+00 | 140.5 | 135.38 | 5.1 | | | | | | | | | |
| | 140.4 | 135.50 | 4.9 | 2+39.2 | | MH TAP | | | 406 Evergreen | | 10-26-81 | |

Top-C45577-506 Flayd - 7-3-74 Surgeon (5+28.7)
 Top-C45605-524 " - 7-8-74 " (1+95.4)
 Top-C45606-530 " - 7-8-74 " (3+09.0)
 Top-C59948-511 Flayd - 11-30-73 Surgeon (9+94.6)

98-18958-7 10/6/98 8444 W McCormick -
 Utility Center - Top 107 West -
 4' sch 40-PUC